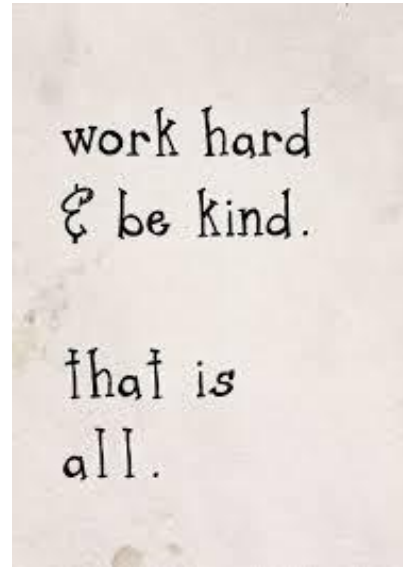


Wonderful Willow Class Home learning January 2021



• "What day is it?", asked Pooh.
• "It's today," squeaked Piglet.
• "My favorite day," said Pooh."



Here is a selection of some of your wonderful work so far!
Remember to keep it coming! It is amazing.

Unit 2

Agreed for
Some of the class believe that some
time should be devoted to go
outside a class because they
can not hear any

Agreed again
Of the other location believe
some should not be used to go
outside because they can do some
learning about the language

Unit 2
Understand multiplication and division
in digits

Maths Lesson

Task 1

• • •	2 • • •	3 • • •
• • •	• • •	• • •
• • •	• • •	• • •
3 + 3 = 6	• • •	• • •
3 + 3 = 6	3 + 3 = 6	• • •
4 + 3 = 7	3 + 4 = 7	• • •
3 + 4 = 7	12 + 3 = 15	• • •
	3 + 12 = 15	• • •
		• • •
		• • •

Maths Lesson

Warm up

Exercise	Header
1. 2 x 3 = 6 ✓	1. 2 x 4 = 8 ✓
2. 5 x 2 = 10 ✓	2. 6 x 4 = 24 ✓
3. 7 x 2 = 14 ✓	3. 8 x 4 = 32 ✓
4. 9 x 2 = 18 ✓	4. 10 x 4 = 40 ✓
5. 11 x 2 = 22 ✓	5. 12 x 4 = 48 ✓
6. 13 x 2 = 26 ✓	6. 14 x 4 = 56 ✓
7. 15 x 2 = 30 ✓	7. 16 x 4 = 64 ✓
8. 17 x 2 = 34 ✓	8. 18 x 4 = 72 ✓
9. 19 x 2 = 38 ✓	9. 20 x 4 = 80 ✓
10. 21 x 2 = 42 ✓	

Task 1

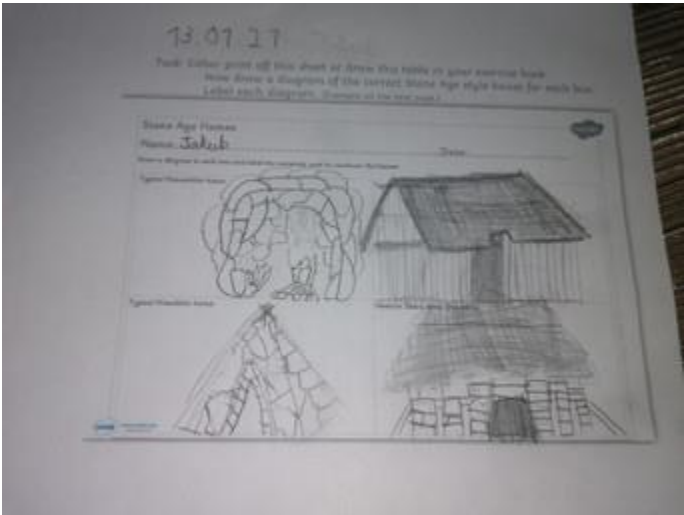
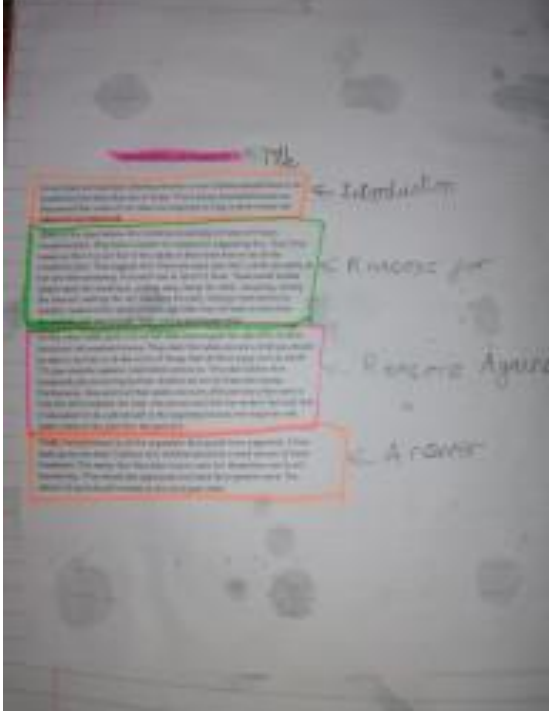
1. 9 x 10 = 90	4. 36 x 10 = 360	7. 48 x 10 = 480
2. 17 x 10 = 170	5. 26 x 10 = 260	8. 72 x 10 = 720
3. 10 x 10 = 100		

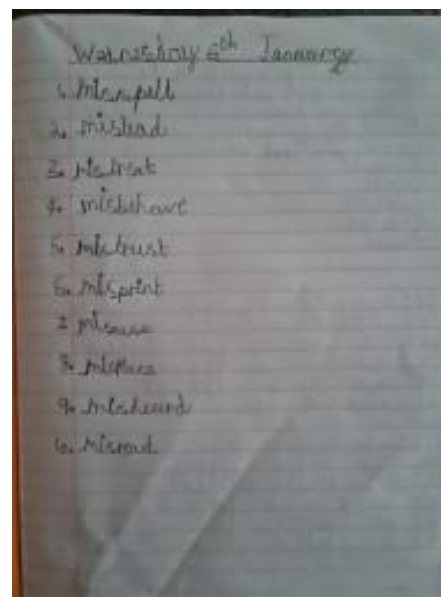
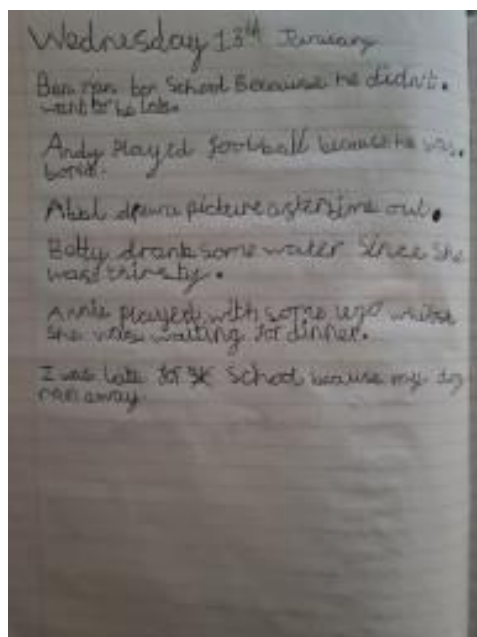
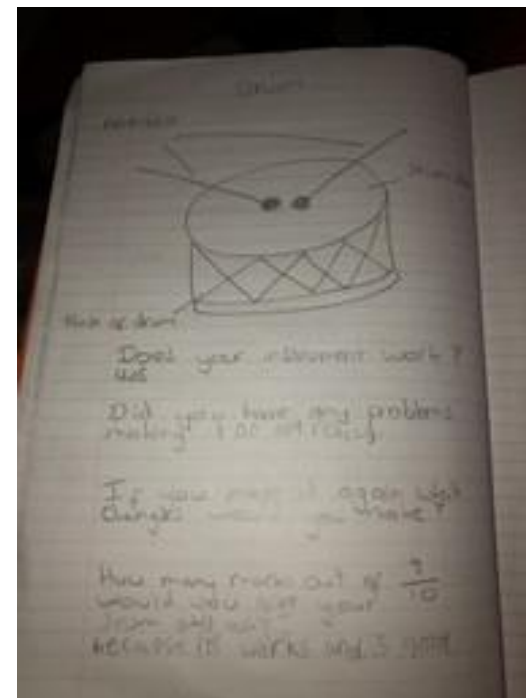


Maths Lesson

Task 1

• • •	2 • • •	3 • • •
• • •	• • •	• • •
• • •	• • •	• • •
3 + 3 = 6	• • •	• • •
3 + 3 = 6	3 + 3 = 6	• • •
4 + 3 = 7	3 + 4 = 7	• • •
3 + 4 = 7	12 + 3 = 15	• • •
	3 + 12 = 15	• • •
		• • •
		• • •





only 4th January 2001

Case 2: Widespread outbreak of Listeria in 2000

1. Brussels sprouts were found to be the source of the outbreak
2. Cheddar and Swiss cheese were found to be the source of the outbreak
3. Cheddar and Swiss cheese were found to be the source of the outbreak
4. Cheddar and Swiss cheese were found to be the source of the outbreak

More were & still the same but they are different

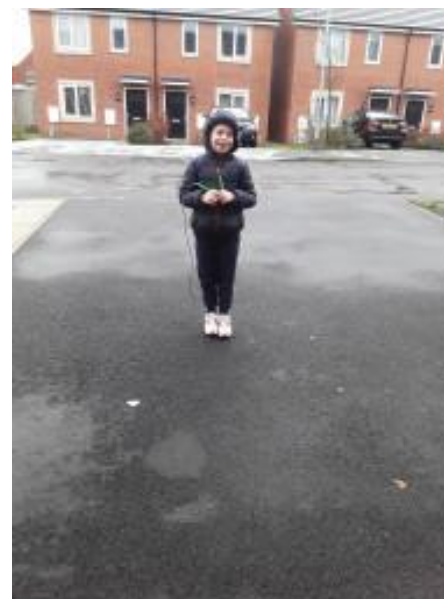
Thursday 4th January

1. got a call from a friend to say
2. my friend was in the hospital
3. my friend was in the hospital
4. my friend was in the hospital
5. my friend was in the hospital
6. my friend was in the hospital
7. my friend was in the hospital
8. my friend was in the hospital
9. my friend was in the hospital
10. my friend was in the hospital

1	11
2	12
3	13
4	14
5	15
6	16
7	17
8	18
9	19
10	20

[illegible]

1. $2x^2 + 3x - 5$
 2. $4x^2 - 7x + 2$
 3. $5x^2 + 11x - 6$
 4. $6x^2 - 13x + 8$
 5. $7x^2 + 15x - 10$
 6. $8x^2 - 17x + 9$
 7. $9x^2 + 19x - 12$
 8. $10x^2 - 21x + 11$
 9. $11x^2 + 23x - 14$
 10. $12x^2 - 25x + 15$
 11. $13x^2 + 27x - 16$
 12. $14x^2 - 29x + 17$
 13. $15x^2 + 31x - 18$
 14. $16x^2 - 33x + 19$
 15. $17x^2 + 35x - 20$
 16. $18x^2 - 37x + 21$
 17. $19x^2 + 39x - 22$
 18. $20x^2 - 41x + 23$
 19. $21x^2 + 43x - 24$
 20. $22x^2 - 45x + 25$
 21. $23x^2 + 47x - 26$
 22. $24x^2 - 49x + 27$
 23. $25x^2 + 51x - 28$
 24. $26x^2 - 53x + 29$
 25. $27x^2 + 55x - 30$
 26. $28x^2 - 57x + 31$
 27. $29x^2 + 59x - 32$
 28. $30x^2 - 61x + 33$
 29. $31x^2 + 63x - 34$
 30. $32x^2 - 65x + 35$
 31. $33x^2 + 67x - 36$
 32. $34x^2 - 69x + 37$
 33. $35x^2 + 71x - 38$
 34. $36x^2 - 73x + 39$
 35. $37x^2 + 75x - 40$
 36. $38x^2 - 77x + 41$
 37. $39x^2 + 79x - 42$
 38. $40x^2 - 81x + 43$
 39. $41x^2 + 83x - 44$
 40. $42x^2 - 85x + 45$
 41. $43x^2 + 87x - 46$
 42. $44x^2 - 89x + 47$
 43. $45x^2 + 91x - 48$
 44. $46x^2 - 93x + 49$
 45. $47x^2 + 95x - 50$
 46. $48x^2 - 97x + 51$
 47. $49x^2 + 99x - 52$
 48. $50x^2 - 101x + 53$
 49. $51x^2 + 103x - 54$
 50. $52x^2 - 105x + 55$
 51. $53x^2 + 107x - 56$
 52. $54x^2 - 109x + 57$
 53. $55x^2 + 111x - 58$
 54. $56x^2 - 113x + 59$
 55. $57x^2 + 115x - 60$
 56. $58x^2 - 117x + 61$
 57. $59x^2 + 119x - 62$
 58. $60x^2 - 121x + 63$
 59. $61x^2 + 123x - 64$
 60. $62x^2 - 125x + 65$
 61. $63x^2 + 127x - 66$
 62. $64x^2 - 129x + 67$
 63. $65x^2 + 131x - 68$
 64. $66x^2 - 133x + 69$
 65. $67x^2 + 135x - 70$
 66. $68x^2 - 137x + 71$
 67. $69x^2 + 139x - 72$
 68. $70x^2 - 141x + 73$
 69. $71x^2 + 143x - 74$
 70. $72x^2 - 145x + 75$
 71. $73x^2 + 147x - 76$
 72. $74x^2 - 149x + 77$
 73. $75x^2 + 151x - 78$
 74. $76x^2 - 153x + 79$
 75. $77x^2 + 155x - 80$
 76. $78x^2 - 157x + 81$
 77. $79x^2 + 159x - 82$
 78. $80x^2 - 161x + 83$
 79. $81x^2 + 163x - 84$
 80. $82x^2 - 165x + 85$
 81. $83x^2 + 167x - 86$
 82. $84x^2 - 169x + 87$
 83. $85x^2 + 171x - 88$
 84. $86x^2 - 173x + 89$
 85. $87x^2 + 175x - 90$
 86. $88x^2 - 177x + 91$
 87. $89x^2 + 179x - 92$
 88. $90x^2 - 181x + 93$
 89. $91x^2 + 183x - 94$
 90. $92x^2 - 185x + 95$
 91. $93x^2 + 187x - 96$
 92. $94x^2 - 189x + 97$
 93. $95x^2 + 191x - 98$
 94. $96x^2 - 193x + 99$
 95. $97x^2 + 195x - 100$
 96. $98x^2 - 197x + 101$
 97. $99x^2 + 199x - 102$
 98. $100x^2 - 201x + 103$
 99. $101x^2 + 203x - 104$
 100. $102x^2 - 205x + 105$



Halving Numbers

Easier

1. Half of 10 = 5
2. Half of 20 = 10
3. Half of 30 = 15
4. Half of 40 = 20
5. Half of 60 = 30
6. Half of 80 = 40

Harder

1. Half of 60 = 30
2. Half of 80 = 40
3. Half of 90 = 45
4. Half of 30 = 15
5. Half of 50 = 25
6. Half of 70 = 35

Remember

1. $50 \div 10 = 5$	1. $52 \div 5 = 10 \text{ r } 2$
2. $80 \div 10 = 8$	2. $45 \div 5 = 9$
3. $60 \div 10 = 6$	3. $47 \div 5 = 9 \text{ r } 2$
4. $30 \div 10 = 3$	4. $18 \div 5 = 3 \text{ r } 3$
5. $90 \div 10 = 9$	5. $84 \div 5 = 16 \text{ r } 4$
6. $20 \div 10 = 2$	6. $32 \div 5 = 6 \text{ r } 2$

5. Adele, who always tried hard, made a mistake in her maths today.

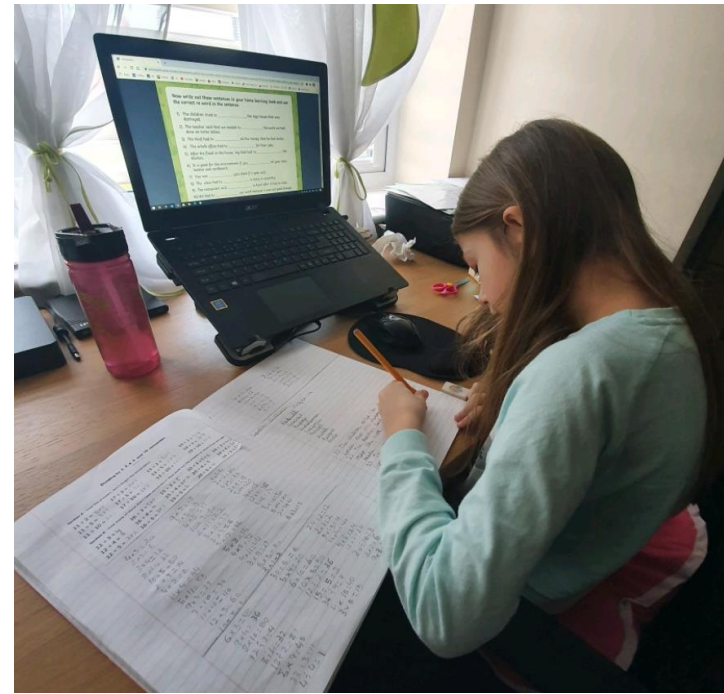
6. The sentence was not meant to outrage you.

7. Eneka was worried she would misplace her guitar on the music trip.

8. There was a misprint in the book I was reading.

9. It is very cruel to mistreat your pets.

10. Do not misuse the computers in lessons.



I believe children should wear school uniforms because it helps them to feel like they are part of a team. I think all children should wear school uniforms because it is a good idea because we have to wear school uniforms. Although some people think that school uniforms are a good idea I think that is not good. Although some people think that wearing school uniforms is a bad idea I think that is not good. Children should wear school uniforms because it helps them to feel like they are part of a team. Children should not wear school uniforms because it is expensive and children don't want to wear it.

mispell mispell mispell
 mislead mislead mislead
 mistreat mistreat mistreat
 misbehave misbehave misbehave
 mistrust mistrust mistrust
 misuse misuse misuse
 misplace misplace misplace
 misheard misheard misheard
 misread misread misread

Tuesday 5th January

5015	1215	583
5016	582	584
5017	163	585
5018	164	586
5019	165	587
5020	166	588
5021	167	589
5022	168	590
5023	169	591
5024	170	592
5025	171	593
5026	172	594
5027	173	595
5028	174	596
5029	175	597
5030	176	598
5031	177	599
5032	178	600
5033	179	601
5034	180	602
5035	181	603
5036	182	604
5037	183	605
5038	184	606
5039	185	607
5040	186	608
5041	187	609
5042	188	610
5043	189	611
5044	190	612
5045	191	613
5046	192	614
5047	193	615
5048	194	616
5049	195	617
5050	196	618
5051	197	619
5052	198	620
5053	199	621
5054	200	622
5055	201	623
5056	202	624
5057	203	625
5058	204	626
5059	205	627
5060	206	628
5061	207	629
5062	208	630
5063	209	631
5064	210	632
5065	211	633
5066	212	634
5067	213	635
5068	214	636
5069	215	637
5070	216	638
5071	217	639
5072	218	640
5073	219	641
5074	220	642
5075	221	643
5076	222	644
5077	223	645
5078	224	646
5079	225	647
5080	226	648
5081	227	649
5082	228	650
5083	229	651
5084	230	652
5085	231	653
5086	232	654
5087	233	655
5088	234	656
5089	235	657
5090	236	658
5091	237	659
5092	238	660
5093	239	661
5094	240	662
5095	241	663
5096	242	664
5097	243	665
5098	244	666
5099	245	667
5100	246	668
5101	247	669
5102	248	670
5103	249	671
5104	250	672
5105	251	673
5106	252	674
5107	253	675
5108	254	676
5109	255	677
5110	256	678
5111	257	679
5112	258	680
5113	259	681
5114	260	682
5115	261	683
5116	262	684
5117	263	685
5118	264	686
5119	265	687
5120	266	688
5121	267	689
5122	268	690
5123	269	691
5124	270	692
5125	271	693
5126	272	694
5127	273	695
5128	274	696
5129	275	697
5130	276	698
5131	277	69

Our wonderful key worker children miss everyone so much!







