

Maths Lesson

Year 3

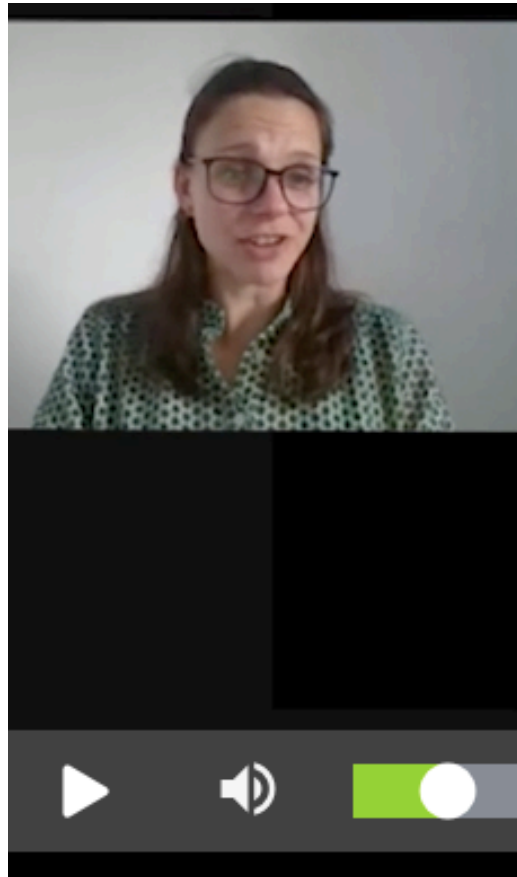
Write your date and
title in your book

8.2.21

Can I solve 3 digit addition calculations?

This is Miss Brinkworth.

She is going to remind you how to do column addition in a video.



Click on this video link to watch her lesson.
Pause the lesson whenever you need to.

<https://classroom.thenational.academy/lessons/adding-two-3-digit-numbers-regrouping-in-one-column-cmt64e?activity=video&step=2&view=1>

The activities from her lesson are on the following slides:

If you can't work the video, just do the slides without it.

You will need...



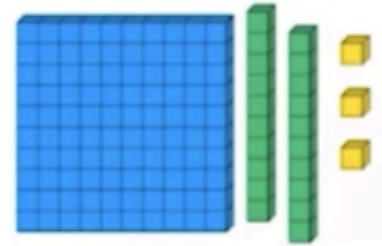
Pencil or pen



Paper



Online Dienes



ask your parent or carer to help you to use this URL
<https://mathsbot.com/manipulatives/blocks>

3



You can use online dienes using the website shown, draw them or make some using cut up bits of paper/straws/counters/money etc.



This **warm up** activity is on the video.



Warm up - Mentally add these numbers

455 + 123 =

175 + 213 =

236 + 442 =

536 + 233 =

336 + 257 =

724 + 243 =

Challenge -
Which is the odd one out?

If you can't do these mentally, use a written method, counters etc.

Answer on the next slide – No peeking!

Answers!

Warm up - Mentally add these numbers



$$455 + 123 = \boxed{578}$$

$$175 + 213 = \boxed{388}$$

$$236 + 442 = \boxed{678}$$

$$536 + 233 = \boxed{769}$$

$$336 + 257 = \boxed{593}$$

$$724 + 243 = \boxed{967}$$

Challenge -

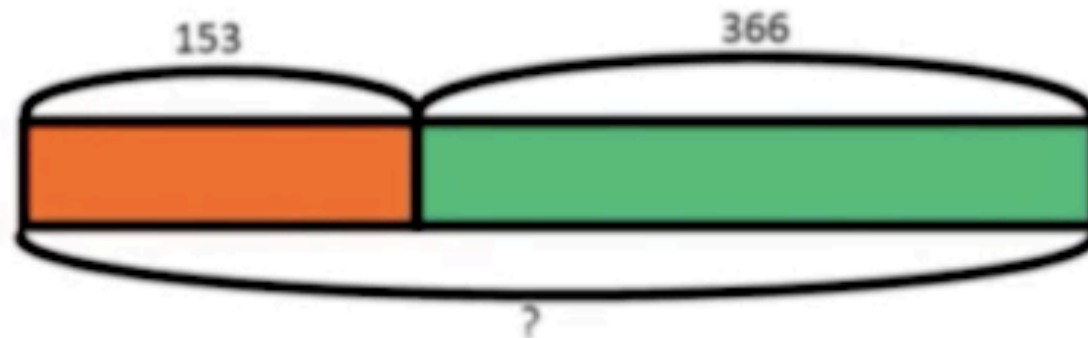
Which is the odd one out? **Requires re-grouping**

The other calculations can be done easily in your head.

Word problem from the video

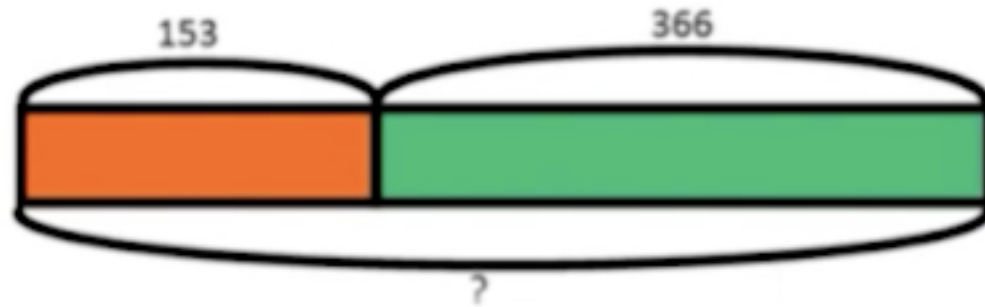
What kind of calculation is needed to work this out?

One Sunday, in Edinburgh castle car park, there were **153** coaches and **366** cars. How many vehicles were in the car park altogether?



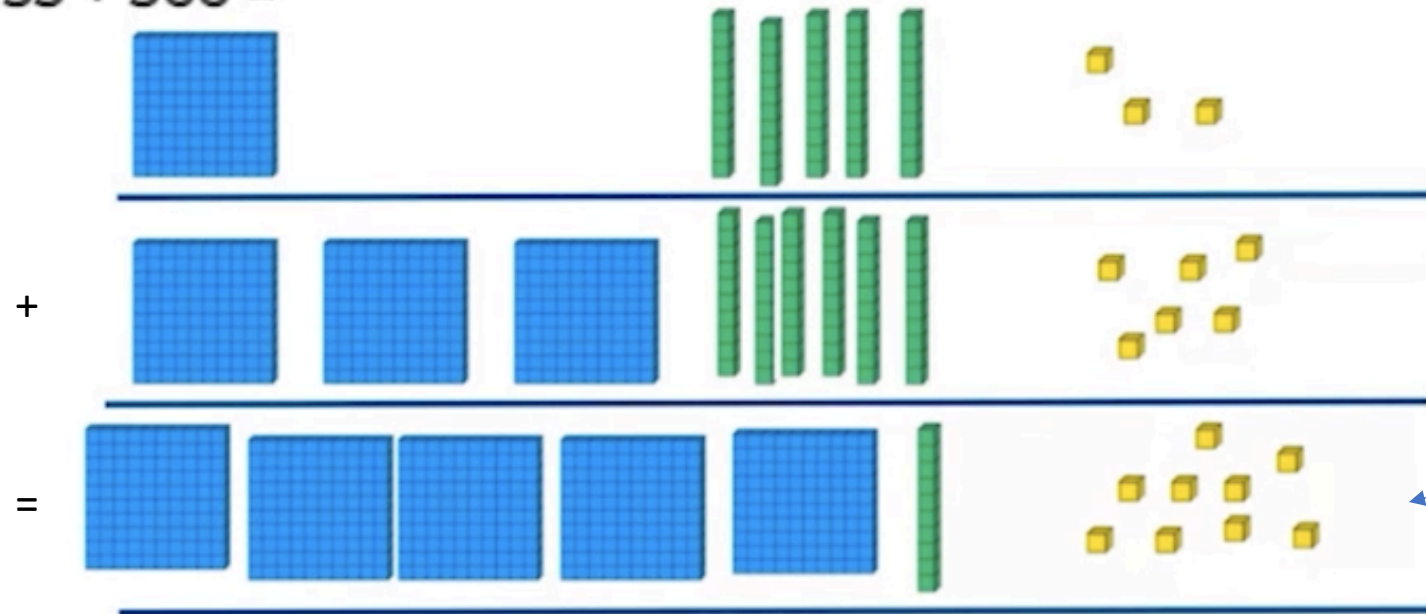
That's right – an addition calculation is needed.

$$153 + 366 =$$



You can work out this calculation using diene blocks.
You can draw these, use cut up bits of paper or use the website shown.

$$153 + 366 =$$



What is the
answer
shown?

ask your parent or carer to help you to use this URL
<https://mathsbot.com/manipulatives/blocks>

This is what it looks like in a written calculation:

Column addition $153 + 366 =$



		1	5	3				
	+	<u>3</u>	<u>6</u>	<u>6</u>				
				9				

What do you think
you have to do here?

That's right – you had to carry onto the next column (the video calls it regrouping)

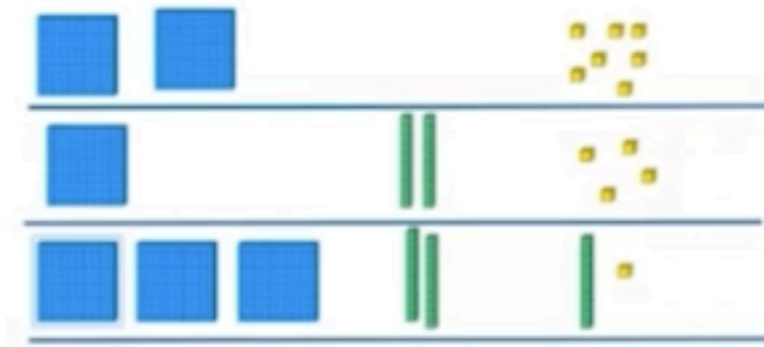
Column addition $153 + 366 =$



		1	5	3				
	+	<u>3</u>	<u>6</u>	<u>6</u>				
		<u>5</u>	<u>1</u>	<u>9</u>				
		<u>1</u>						

Now try this one from the video:

$$207 + 124 =$$



		2	0	7				
	+	<u>1</u>	<u>2</u>	<u>4</u>				

Column addition $207 + 124 =$

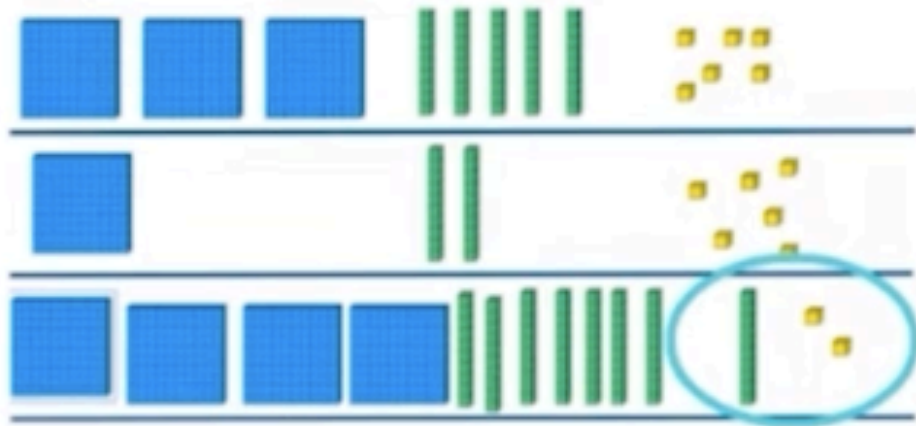


		2	0	7				
	+	<u>1</u>	<u>2</u>	<u>4</u>				
				1				
			1					

Can you remember what to do?

Now try this one:

Column addition $356 + 126 =$



		3	5	6				
	+	<u>1</u>	<u>2</u>	<u>6</u>				
				2				
			1					

Now try this one:

Your turn

$$543 + 282 =$$

You can use
dienes if you
want to.

		5	4	3				
	+	<u>2</u>	<u>8</u>	<u>2</u>				
				5				

Task: Now do these addition calculations.

Use either dienes or do a written calculation.

Part A - use column addition to answer these

$423 + 369 = \square$	$354 + 272 = \square$	$416 + 375 = \square$
$\square = 563 + 341$	$680 + 252 = \square$	$\square = 463 + 361$
$357 + 470 = \square$	$\square = 449 + 242$	$555 + 452 = \square$

Think:

How am I going to set out my work?

It should look like this:

	5	2	7
+	2	6	9

Answers on the next slide – no peeking!

Answers:

Part A - use column addition to answer these

$423 + 369 = \boxed{792}$	$354 + 272 = \boxed{626}$	$416 + 375 = \boxed{791}$
$\boxed{904} = 563 + 341$	$680 + 252 = \boxed{932}$	$\boxed{824} = 463 + 361$
$357 + 470 = \boxed{827}$	$\boxed{691} = 449 + 242$	$555 + 452 = \boxed{1007}$

How did you do?

Now try this:

Part B - use column addition to answer these

1) What could these missing numbers be?

	2	4	5
+	1		3
<hr/>			
	4		8

2) Check this answer

	3	4	3
+	2	7	2
<hr/>			
	5	1	5

Is this answer right or wrong?
How do you know?



Answers on the next slide – no peeking!

Answers:

Part B - use column addition to answer these

1) What could these missing numbers be?

	2	4	5
+	1	8	3
<hr/>			
	4	2	8
<hr/>			

1

2) Check this answer

	3	4	3
+	2	7	2
<hr/>			
	5	1	5
<hr/>			

1

What should this number be?
Is it correct?

Addition

	5	9
+	9	8

	8	7
+	8	6

	6	8
+	7	9
<hr/>		

	7	6
+	6	5

	5	6
+	5	8

	9	4
+	4	8

	8	9
+	3	6

	7	9
+	2	5

	6	9
+	1	7

	5	4
+	0	8

	4	9
+	9	8

	3	5
+	8	7

Choose the level that is right for you.

Column Addition (2/3-digit regrouping 1s) 1

Date:

					H	T	U
					5	2	9
				+	4	6	1
Add the units then add the tens then add the hundreds:					9	9	0
If the units add to more than 10, move a 10 into the 10s column.						1	

	H	T	U			H	T	U
	4	2	5			6	1	8
+	2	4	6		+	2	2	4

[illegible]

How did you do?
We love seeing your work everyone.

Remember to
post your work
on Class Dojo!

