

This week, we are going to look at words that have **prefixes**.  
Can you remember what a **prefix** is?



A prefix is a group of letters added before a root word to alter its meaning and create a new word.

We are going to concentrate on the prefix...

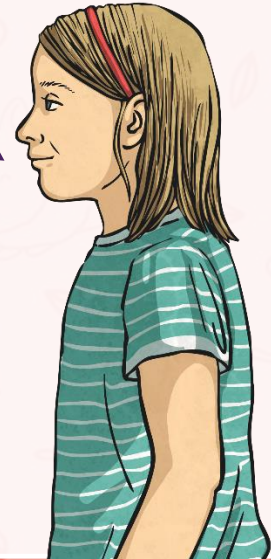
**re-**

**re-**

that usually means 'again' or 'back'  
e.g. **repay**



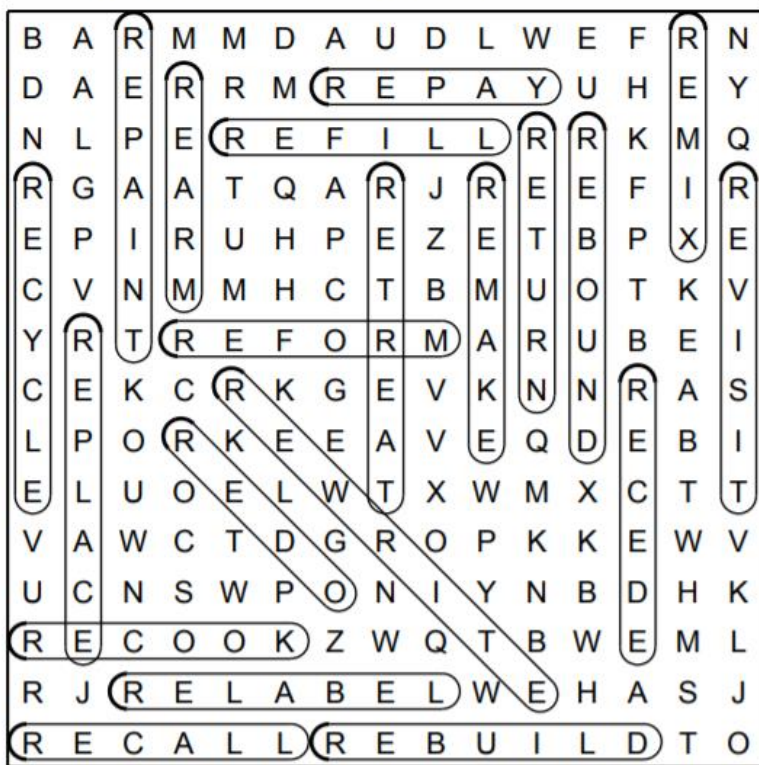
Could you use each word in a sentence?



Name \_\_\_\_\_

**Prefix - re**

Add the prefix 're' to the clues and find the answers. Re means again.



- |         |           |           |
|---------|-----------|-----------|
| 1. make | 8. paint  | 15. label |
| 2. form | 9. cook   | 16. build |
| 3. fill | 10. bound | 17. write |
| 4. cede | 11. treat | 18. cycle |
| 5. do   | 12. place | 19. pay   |
| 6. mix  | 13. visit | 20. call  |
| 7. arm  | 14. turn  |           |

How did you get on with the word search?

All of these words have the prefix **re** at the beginning of their word. The prefix **re** means back or again, e.g. **redo** means to do something again.

\***Re**bound = to spring **back**

\***Re**cycle = to use something **again**

\***Re**do = to do something **again**

\***Re**flect = redirect something **back** to where it came from

\***Re**fresh = bring the freshness **back**

\***Re**peat = to do something **again**

\***Re**play = to play something **again**

Add **re to** these root words and write the meaning of the words in your home learning book. Use a dictionary.

\*turn

\*appear

\*verse

\*build

\*condition

\*take

\*join

# How did you get on?

\***re**turn = to come or go **back** somewhere

\***re**appear = to appear **again**

\***re**verse = to move in a **back**wards direction

\***re**build = to build something **again**

\***re**condition = to bring something **back** to good condition

\***re**take = to take something again such as a penalty in football or a photograph with a camera

\***re**join = to join something again

The following slides have some definition clues. Can you guess what the **re** word is from the clue? If you are struggling see how many letters it has too.

To build something again after it has  
been destroyed

— — — — —

Rebuild

To come back or visit again

— — — — —

Revisit

To pay back, especially money

— — — — —

Repay

To

-----

Redecorate

To convert waste material into a form  
in which it can be used again

— — — — —

Recycle

To heat something again

-----

Reheat

To tell something, like a story again

— — — — —

Retell

To open something again

— — — — —

Reopen

To something again or differently

— — — — —

Redo

Now write out these sentences in your home learning book and use the correct re word in the sentence.

- 1) The children tried to \_\_\_\_\_ the lego house that was destroyed.
- 2) The teacher said that we needed to \_\_\_\_\_ the work we had done on times tables.
- 3) The thief had to \_\_\_\_\_ all the money that he had stolen.
- 4) The whole office had to \_\_\_\_\_ for their jobs.
- 5) After the flood in the house, my Dad had to \_\_\_\_\_ the kitchen.
- 6) It is good for the environment if you \_\_\_\_\_ all your cans, bottles and cardboard.
- 7) You can \_\_\_\_\_ your food if it goes cold.
- 8) The class had to \_\_\_\_\_ a story in assembly.
- 9) The restaurant will \_\_\_\_\_ in April after it had to close.
- 10) We had to \_\_\_\_\_ our work because it was not good enough.

This week's spelling list for you to learn – re words  
Write them out in your home learning book

Rebuild

Revisit

Repay

Reapply

Redecorate

Recycle

Reheat

Retell

Reopen

Redo