

SHAPE Curriculum





SHAPE



St Martins is an 11-19 secondary special school, with two consecutive Outstanding Ofsted reports. We are co-located with Noel Baker School on the new Derwent Campus in Alvaston, Derby. Within our exciting learning environment we have



developed a **creative curriculum concept called SHAPE** which is underpinned by five key elements. The **five elements** are at the core of all learning experiences in classrooms, displays, and assemblies. **SHAPE is embedded** in all our educational visits and residentials, learning themes, accreditation pathways, extended schools options, partnership and community work. **Spiritual, Moral, Social and Cultural experiences** are in each element and evidenced in the focus sections at the end of the booklet.

Jared says: "Everything we do in lessons, and assemblies is about SHAPE-being safe, happy, achieving and helping others".

What is **SHAPE**?

Our “**SHAPE**” curriculum belongs to our students. It is every interaction and learning experience that takes place in school and on off site visits and residentials.



Students relate positively to the logos and visual elements displayed around school which reinforce their understanding. These are covered in all class lessons, weekly assemblies, special workshops and events, extended school activities, and off-site sessions.





Staff Vision Statement

St Martins is an outstanding school with a unique ambience.

We create exciting aspirational opportunities for all, within a safe, caring environment. We empower students to become responsible and confident citizens, who enjoy life-long learning, and make a positive contribution to local and global communities.



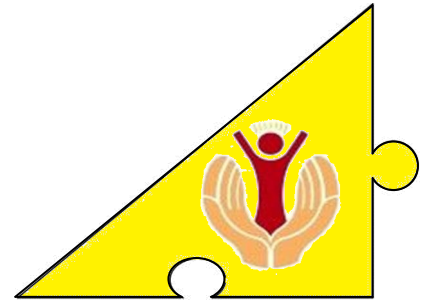
Students' Vision Statement

St Martins School is like a family. We have great staff who encourage us to become independent learners, so we can do our best in our school work, and make a positive contribution in our classes, school, local and global communities.



Our School Motto:

“Shaping Futures-Broadening Horizons”.



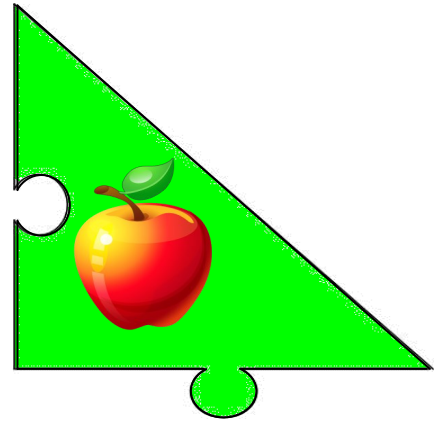
We have created an environment where students feel safe and confident to learn and socially interact. Our students feel they belong to our school

community where they are cared for, but encouraged to be independent and make positive personal choices around being safe in school, home and their community.



Students are taught how to stay safe when using the internet and social media and what to do if they feel in uncomfortable or in danger.

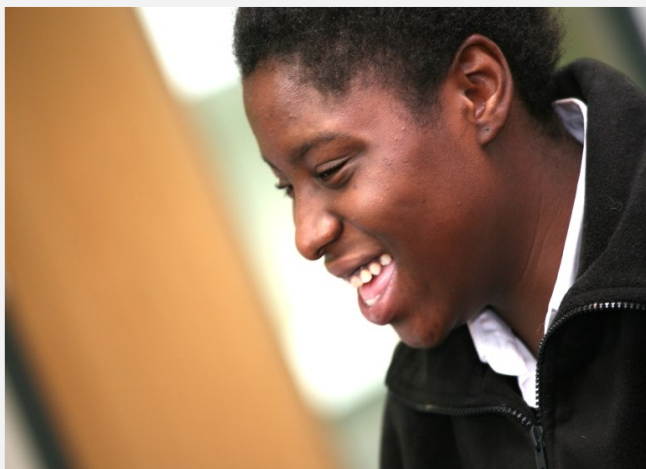
H Health and Happiness



We promote participation in, and understanding of healthy lifestyles throughout the curriculum. Food Technology, Sport , Outdoor



Education, Forest Schools, Music , Art and Drama, PSHE as well as spiritual, moral, social and cultural experiences in classes, assemblies, visits and special events days: all contribute to Health and Happiness.



Tarika says: "We learn about SHAPE in our assemblies, they are fun!"



Aspiration and Achievement



Our students say that they really enjoy school and are ready to learn. Attendance is very good and is frequently celebrated and rewarded. We create exciting learning opportunities for everyone, and



encourage all students to be aspirational in their learning and personal development goals. We constantly celebrate personal

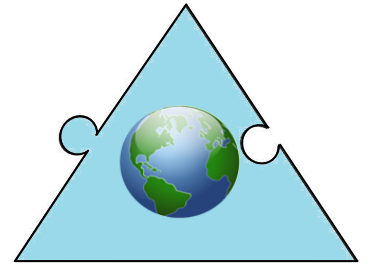
and group achievements throughout the school year in classes with self assessment folders and reward slips in weekly assemblies. We share this with families, governors and the community through our excellent half-termly Newsletter. We promote



leadership and responsibility in school, led by our elected Head Boy, Head Girl and School Council.



Positive contribution



We encourage our students to become confident citizens who are able to make good choices in their own lives, as well as give advice to others.

We promote positive behaviour in and out of school as role models, and encourage our students to develop appropriate and positive relationships, so they are able to make a positive contribution in school, their home and local community. **Global Education is embedded** in the curriculum. We have partner schools in Germany, France, India and Tanzania. Staff and student exchanges take place and students exchange work and raise funds for those schools in need. We are a **Fair Trade School** and have a weekly Fair Trade Café and events.



Eenterprise



We prepare our students for independent adult life so they can understand more fully the skills they need to be able to support themselves and their families financially. We arrange work placements and visits so that our students are able to experience the world of work. We actively encourage our students to successfully acquire life skills and develop enterprising aspirations and attitudes.



Kyle says: “ SHAPE is everything we do in school, it is everywhere”

SHAPE

SHAPE Structure and organisation.

Our students start their day with social breakfast time. This is followed by a phonics-based reading scheme (Read, Write, Inc.) and Numeracy. KS3 stu-



dents follow a thematic curriculum with Core subjects

(Literacy, Numeracy, PSHE/ Citizenship), Humanities, Expressive and Performing Arts, ICT/Communication, PE, Food and Design Technology.



Students in Key Stage 4 follow accredited courses from Entry

Level 1 to Level 2 GCSE. Students are offered a variety of learning pathways which include courses from Edexcel, AIM Awards, WJEC and Btec. In addition there is a wide variety of extended schools options and activity clubs. We have our own Key stage 5 Post 16 provision called **Horizons**.

SHAPE learning focus: A S K

Attitudes

To help students develop self confidence, aspirations and positive personal qualities

Skills

To teach students how to apply their learning in different contexts in school, home and community.

Knowledge

Learning that develops students an understanding of self, others and their world.





Attitudes

Be respectful

Be ready

Be resilient

Be independent

Be positive

Skills

Self Managers

Effective Participators

Creative Thinkers

Reflective Learners

Independent Enquirers



Knowledge

Core subjects (English, Maths, Citizenship/PSHE) ;

Science and Technology(Food and Design Tech , ICT)

Humanities (Includes MFL) Sport ,PE, Outdoor Ed.

Expressive Arts and Music



Our Attitudes




Class -		Tick	Name	Date
Be...		<input checked="" type="checkbox"/>		
1	Respectful	<input type="checkbox"/>		
2	Ready	<input type="checkbox"/>		
3	Resilient	<input type="checkbox"/>		
4	Independent	<input type="checkbox"/>		
5	Positive	<input type="checkbox"/>		
6	Resourceful	<input type="checkbox"/>	Signed	

Student reward slips



Skills



Class -		Tick	Name	Date
S	Self Manager	<input type="checkbox"/>		
E	Effective Participator	<input type="checkbox"/>		
C	Creative Thinker	<input type="checkbox"/>		
R	Reflective Learner	<input type="checkbox"/>		
I	Independent Enquirer	<input type="checkbox"/>		
T	Team Worker	<input type="checkbox"/>	Signed	

Identifying Shape * SMSC

Safety

School Fencing and Security
Assemblies
Anti Bullying Week *
Staff student First Aid course
Safeguarding Procedures
Police and CSPO liaison *
Transport for school clubs
School Health Champions *
Gang Awareness workshops *
Bikeability training
Road Safety
Internet Safety
Health and Safety checks for
Work Placements
Staff CPD training-Health and
Safety; Activity and Leadership
EVC Risk Assessments
PSHE Sessions *
Pupil Well being sessions with
specialist therapist *
Sexual Health sessions *
Transport Training
Classroom School displays *
School nurse visits –HPV and
Sexual Health
Specialist subjects-Safety focus
Evacuation practices

Health and Happiness

Student Well Being sessions *
Spiritual Health and Awareness
“Awe and Wonder” experiences
Ecology and Sustainability
Awareness *
Religious festivals and visits to
places of worship *
Residentials, Environmental/
Outdoor Activities *
Healthy Schools Award *
PE and after school clubs
Food Tech lessons
Social dining *
Water Fountains
Structured Play with equipment
during breaks *
Quiet times *
Outdoor Ed Forest Schools
Healthy Breakfast Club
Calm Room and Sensory Room
*Pastoral Care and Guidance
AIM Accredited courses:
Fitness; Childcare
Alternative Provision activities

Identifying Shape * SMSC

Aspiration, achievement

Key stage Award assemblies
Celebration assemblies*
Head Boy/Girl voting
School Council voting
STAR profiles; L2L *
Star of the Week
Reward Chart
Green slips/Certificates:(linked to learning targets) Assemblies
*Worth a Mention boards
News Letters
Quality Marks: CPD; Inclusion: Arts; ISA
Whole School Positive Ethos *
Appropriate Learning Pathways and accreditations
Work Placements KS4
Class Visits and Rewards budget
Horizons Post 16.
Educational Visits Residential; museums; concerts; theatres; Sports *
Taking part/ planning events/ performances *

Positive contribution

Fund raising projects UK ;Africa*
Supporting HE Medical students
Teaching School status: NLE;SLE's
Global Education projects in:
Tanzania; Germany; India; France; Spain) *
Partnerships supporting other schools
Peer Mentoring *
Providing placements for Derby University Teacher Trainees
Volunteers Scheme to support families/carers and other aspiring professionals.
Pupil and Family Well Being Lead*
Community events-BINGO; *
School Productions; School Fayre; resources to Mumbai school
Hosting teachers from India; Germany; Tanzania
Learning resources donations-*
Supporting Community Policing/ PCSO team
Eco Team and Recycling Project *
School Prom *
Inviting schools to performances

Identifying Shape * SMSC

Enterprise

Horizons Post 16 Retail unit

Bingo social nights

Summer Fayre: making products to sell and display

Maths Functional Skills

KS4 budgeting module (maths)

Fund raising for Visits and Residentials

Vocational skills courses

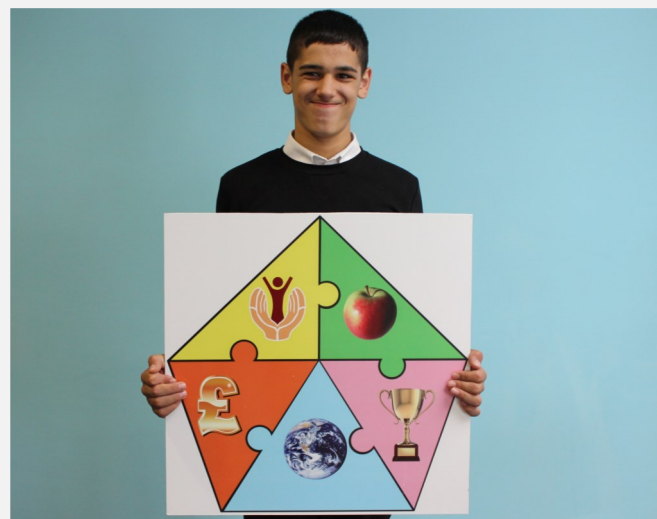
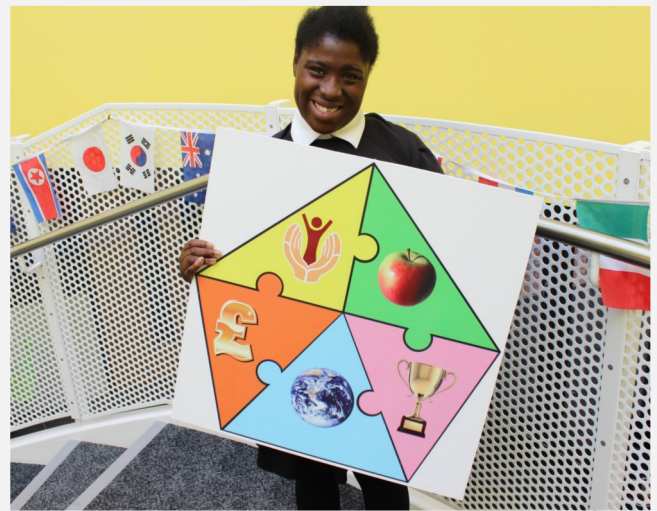
Employment training KS4

Promote Independent Learning

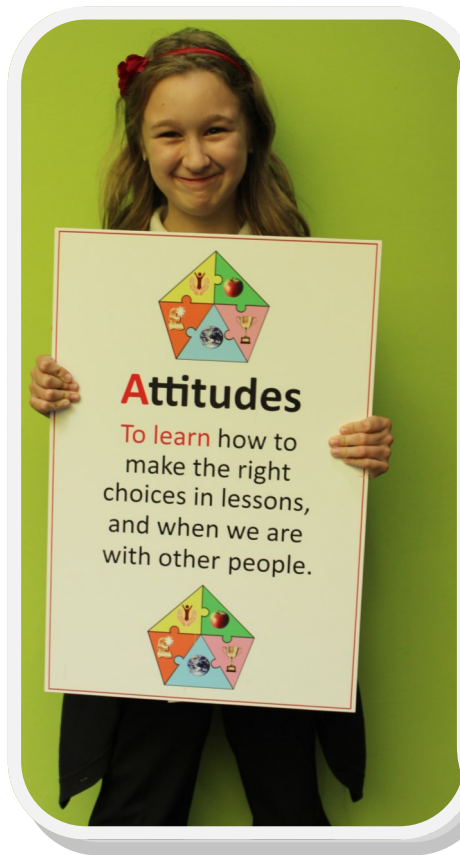
Managing foreign currency

Focus on Attitudes; Skills and Knowledge

Promote creativity and work ethic in all school sessions



SHAPE





**St Martins School, Derwent Campus, Bracknell
Drive, Alvaston, Derby
DE24 0BR**

E mail: admin@stmartins.derby.sch.uk



Tel: (01332) 571151

www.stmartins.derby.sch.uk



"Shaping Futures-Broadening Horizons"

