



St Mary's
Catholic Primary School



St Mary's
Catholic Primary School



St Mary's
Catholic Primary School



St Mary's
Catholic Primary School

St Mary's Catholic Primary School

Newsletter - Friday 16th May 2025

Message to parents from the Executive Headteacher

Dear Parents/Carers,

Welcome to Issue 30th of our Newsletter.

First Holy Communion Weekend

This weekend will be a very special one for a number of our children and their families as they will be making their First Holy Communion at either St Pius X Roman Catholic Church or Our Lady of the Holy Souls Church.



This is a wonderful day for the children who are proudly saying 'YES' to God's invitation to be an active member of the Christian family. Saying yes enables the children to be a full participant in the mass, receiving the body and blood of Christ marks a very special moment in their lives and undoubtedly deepens their relationship with God.

We send you all our love and prayers on this most special of days. May you walk with Christ at your side, before you and behind you all the days of your life. May you be the voice of Christ in your words spoken to others and the hands of Christ in your actions with others

Year 6 end of Key Stage Assessment (SATs)

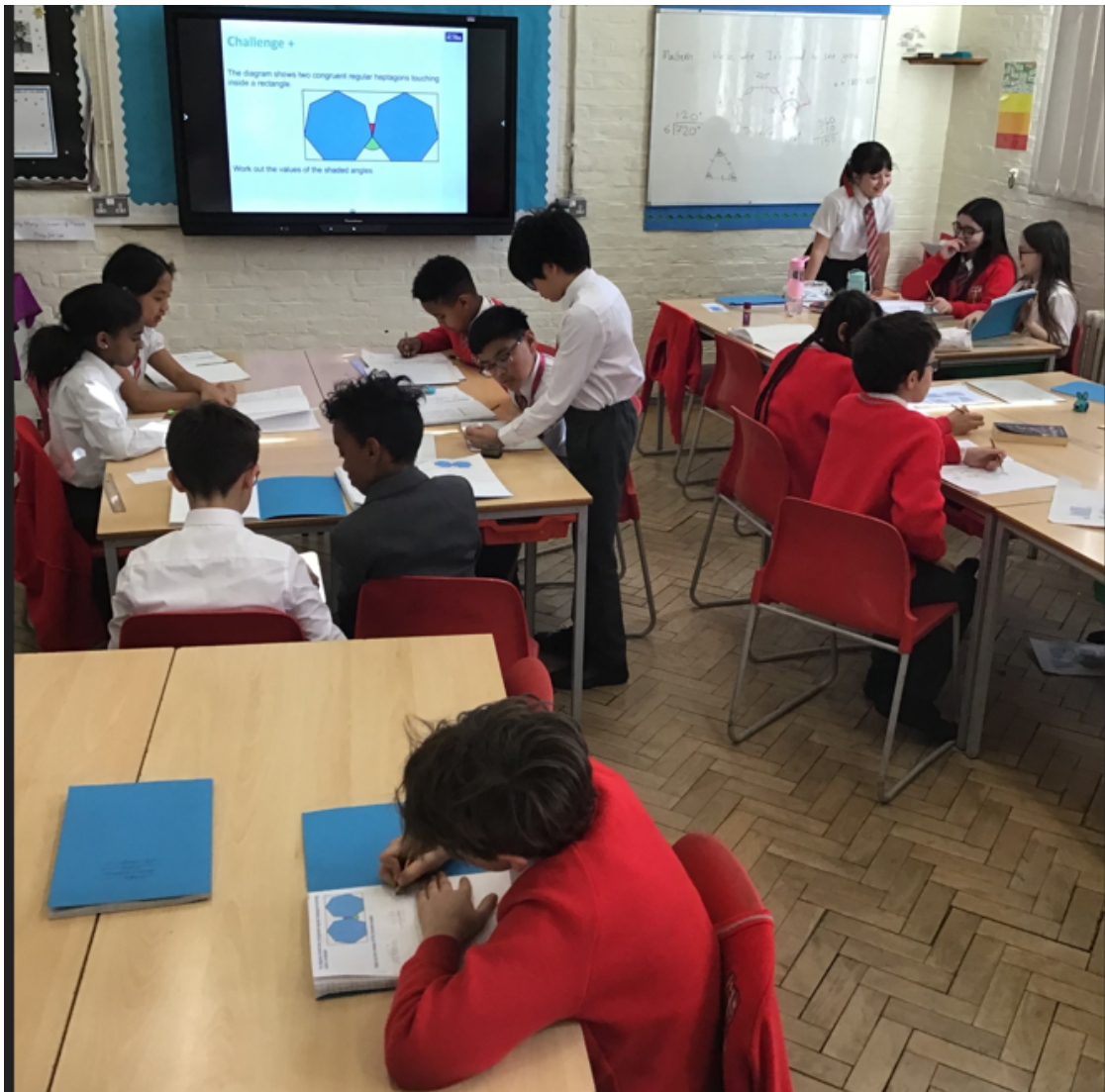
I would like to congratulate the year 6 children on the completion of their end of Key Stage Two assessments. I know you have worked incredibly hard this year and have given of your very best. I would also like to thank the Year 6 staff teams for their amazing dedication and commitment to ensuring that the children were well prepared for their assessments. Well done everyone.

Wishing you all a very happy and restful weekend,

Best Wishes,

Ms G Hampton

Executive Headteacher



Year 6 end of Key Stage Assessment (SATs)

I would like to congratulate the year 6 children on the completion of their end of Key Stage Two assessments. I know you have worked incredibly hard this year and have given of your very best.

I would also like thank the Year 6 staff teams for their amazing dedication and commitment to ensuring that the children were well prepared for their assessments.

Well done everyone!

From Ms Hampton

Executive Headteacher

Catholic Life and Mission of the school

This weekend, on Saturday some of our pupils are making their First Communion.

We congratulate them all on this special day and pray for them that they always carry Jesus in their hearts.



This coming Sunday is the 5th Sunday of Easter.

Jesus said:

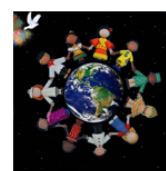
'Little children, I am with you only a little longer. You will look for me, and as I said to the Jews so now I say to you, 'Where I am going, you cannot come.'



'I give you a new commandment, that you love one another. Just as I have loved you, you also should love one another. By this everyone will know that you are my disciples, if you have love for one another.'

John 13:33 - 35

This half term we are looking at the school value of **Tolerance** and the Catholic Social Teaching Principle of **Common Good**. These two important themes will be recurring throughout all areas of our curriculum.



Tolerance refers to the ability to accept and respect differences in opinions, beliefs, or behaviours of other people, even if they differ from one's own.

It is the ability to live together in harmony despite our divergences. Being tolerant involves being understanding, open, and respectful towards the diversity of ideas, cultures, religions, and ways of life.

It does not imply agreeing with everything, but rather seeking constructive [dialogue](#) and avoiding attitudes of rejection or discrimination. Tolerance promotes peaceful coexistence and fosters mutual understanding in a diverse and plural society.

The Catholic Social Teaching (CST) principle of the **Common Good** refers to the social conditions that allow all individuals and communities to flourish and reach their full potential. It's a central idea in CST, closely linked to **Human Dignity and Social Justice**. The Common Good emphasizes shared responsibility for ensuring the well-being of everyone, especially the most vulnerable. Top of Form

A message regarding Attendance and Punctuality from Ms Hampton

Dear Parents/Carers,

Excellent attendance is fundamental to an excellent education. Our Attendance policy follows the policy outlined by the Education Secretary, stating that children are not to be absent from school for holidays or other non-essential reasons during term time. Only in exceptional or mitigating circumstances will an absence be approved.

Illness

If your child is unwell and unable to attend school or absent from school for any reason, please phone the school on 0208 2053790 before 8.40 am.

We have an answerphone where you can leave a message before the office opens, please speak clearly with your child's name, class and the reason your child is unwell.

You can use the absence line from 8.00am to speak to a member of the office.

If we do not receive any information from a parent/carer in the morning, we will contact parents/carers asking them to phone the school. If we do not hear from you we will pursue all contacts regarding a child's absence as part of our safeguarding procedures. Please leave a message by 9.00 am each day of their absence.

If your child has either vomiting or diarrhea, they should stay at home for 48 hours from the last bout of illness. This is a recommendation from Public Health England to protect other pupils and staff. If a child is sent into school within the 48 hour period, we will contact the parents/carers and ask for the child to be collected from school.

Any absence can result in a loss of continuity for your child's education and upset their balance of learning. As a school, we are required to provide details of all unauthorised absences to the Local Authority.

Medical and Dental appointments

We ask that you please make every effort to avoid booking medical and dental appointments during school time. Where this is unavoidable, parents/carers should put this in writing to the school office and attach a copy of the appointment card or letter before the date of the appointment. Please also include the time you will need to collect your child. If arriving late, please ensure that your child is accompanied and signed in by an adult at the school office for safeguarding reasons.

Other Absences

Requests for absence during term time will not be authorised unless there is deemed to be an exceptional circumstance. Local Authorities have the power to serve parents with a Fixed Penalty Notice if a child has significant or repeated days of unauthorised absence.

Being Punctual

School starts at 9.00 a.m. every day. Children need to be in their classrooms by 9 a.m. so that they can start their lessons promptly. Arriving at school on time and ready to learn is the best start to the day for our children.

It is important for your child to arrive at school on time if they are to get the most out of their education. Being late is disruptive for your child but also for all the other children in the class.

Punctuality

5 minutes late every day means missing 3 days of school every year.

Punctuality is continually monitored. The gates open 15 minutes before the school day begins. If your child arrives after this time, then they will be recorded as late in the register!

Attendance is regularly monitored by the local authority **who will fine any unauthorised absences.**

Expectation of children being collected at the end of each day

We expect all parents/carers to collect their children on time. Once the gates have closed, the children who have not been collected are brought into the office. If there are exceptional circumstance which are causing a delay, please contact the office immediately.

We do not have capacity to look after any children who are not picked up after that time.

As you are aware, the office gets very busy and the children cannot be left unsupervised in the reception area as it might pose the safety risk.

Please, ensure that you have arrangements in place to pick up your children on time.

Aktiva, the company running Wrap-Around Care in the RBKC North Hub in Ark Brunel, does take one-off bookings, so please feel free to use their services in emergencies.

Avenues Youth Project offer after school activities and a Walking Bus service, where they collect the children at the end of the day. Please see the information below on how to sign your child up.

Baby and Toddler Group Pictures

This week we had our first Baby and Toddler session on Wednesday at 8.45am - 10.15am. We had local families join us for the morning in some indoor and outdoor play! Lots of wonderful comments from new parents about our AMAZING space and shaded grass area for children to enjoy.

It was a glorious day in the sunshine and we can't wait for the next one on Wednesday 17th May. Come and join us. It will be bubble blowing and parachute play!



Donations for Baby and Toddler Group

Dear Parents,

We would like to ask any families for donations of baby play toys in good or new condition for our Parent and Baby/Toddler Group starting in May on Wednesday mornings.

We would like any wooden puzzles, wooden shape play toys and any musical instruments.

Thankyou for your support.



New Baby and Toddler Group

All Welcome!



New Baby and Toddler Group – all welcome

We are hosting a new baby and toddler group at St Mary's Catholic Primary School.

Please come along and meet other parents, enjoy messy play, singing and rhymes and explore outdoor activities in our large open grassed space!

Wednesdays 8.45am – 10.15am.

All are welcome! Parent/Carers stay and play with your child.



Come to our new EYFS building entrance where we have plenty of buggy parking space!



Dates 2025 (Summer Term)
8.45am – 10.15am

7th and 21st May

4th and 18th June

2nd and 9th July

Where to find us:

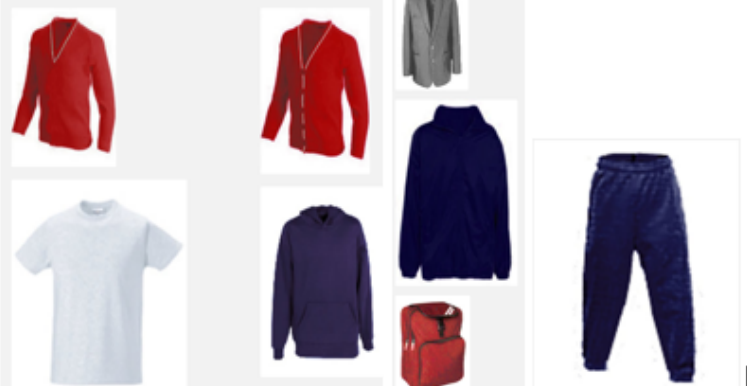


Whole School Uniform

Nursery Uniform



Whole School Uniform



Nursery

Sweatshirt – Crew neck	Embroidered – With School Badge	Cotton/Polyester
Sweatshirt – Crew neck	Embroidered – With School Badge	Cotton/Polyester
T-Shirt	Embroidered – With School Badge	100% Cotton
Infant Backpack	Embroidered – With School Badge	Polyester

Whole School

Knitted Jumper	Embroidered – With School Badge	V-neck.
Knitted Cardigan	Embroidered – With School Badge	Colour matched
Blazer	Embroidered – With School Badge	Phone and internal zipped pockets. Teflon coated Polyester buttons. Courtelle
Hooded Sweatshirt	Embroidered – With School Badge	Cotton/Polyester
Jogpants	Plain	2 pockets. Elasticated waistband. Cotton/Polyester
T-Shirt	Embroidered – With School Badge	100% Cotton
Reversible Jacket	Embroidered – With School Badge	Concealed hood. Reflective tape. Polyester
Infant Backpack - Reception to Year 2	Embroidered – With School Badge	Polyester
Junior Backpack - Year 3 - 6 Only	Embroidered – With School Badge	Polyester
Gym Bag - Reception - Year 6	Embroidered – With School Badge	Rucksack style. Zipped pocket. Name display pocket. Polyester
Tie	Plain	Broad Stripe design. Polyester Clip on also available

Summer School Dresses

Due to hot weather, the girls can now wear the red and white Gingham summer dress only (**not school red Gingham culottes**)

Please ensure dresses are knee length.



School Tie (compulsory)

A gentle reminder that all children in Reception to Year 6 are all expected to wear their school ties.

The St Mary's school tie gives the school its unique identity and this is something we want to preserve and promote throughout the local area.



New elasticated ties -

in response to parent and pupil feed back, we have decided to phase out clip on ties and replace them with elasticated ties. These are now available.


Staff will be checking to ensure that all school uniform criteria is followed. Thank you for your support.



May 2025	
Wednesday 21 st May	World Cultural Diversity Day
Wednesday 21 st May	Year 6 Spoken Word programme starts at school
Monday 26 th May to Friday 30 th May	Half term
June 2025	
2 nd to 4 th June	Year 6 PGL school
2 nd to 13 th June	Year 4 Multiplication Check
9 th June	Year 6 Into university at school
9 th to 11 th June	Year 1 Phonics Screening
Saturday 14 th June	8th Anniversary of the Grenfell Fire
16 th to 20 th June	Year 6 Bikeability
30 th June	Staff INSET, school closed
July 2025	
1 st to 4 th July	Science Week
Friday 4 th July	Summer Fair
7 th to 11 th July	Sports Week
Thursday 10 th July	Sports Day
Tuesday 15 th July	Year 6 Production
Friday 18 th July	Year 6 Leavers' Mass and assembly
Friday 18 th July	Year 6 Prom
Tuesday 22 nd July	Last day of term, school closes at 1.30pm

New diary dates will continue to be included weekly

Clubs - May to July 2025

	Monday	Tuesday	Wednesday	Thursday	Friday
Clashes	Yr 6 booster	Yr 6 booster	Yr 3 Holy Communion Yr 5/6 street dance	Choir KS2 Yr6 booster	Open to all
R-KS1	Rec-KS1 Athletics Outside	Rec-KS1 Gymnastics Inside	Rec-KS1 Football Outside	Rec-KS1&KS2 Art Club Inside	Rec-KS1 Multisports Outside
KS2	NO CLUB	KS2 Football Outside	NO CLUB	NO CLUB	KS2 Gymnas  Inside

PE Days

Please remember that children can come to school in their PE kits on PE days. Please refer to our guidance on school uniform and ensure your child has the correct PE kit. If for any reason they are not able to come in the correct kit, we require an email or phone call from home to explain the circumstances.

Class PE sessions

Wednesdays: EYFS, Y1,Y2 and Y6

Fridays - Y2, Y3,Y4 and Y5

In the week commencing 12th May, Year 6 have their SATS assessment week. To accommodate consequent timetable changes, Year 2 will have two PE lessons on Wednesday 14th May. They will not have PE on Friday 16th May.

Important Parents' Information

Home time

A gentle reminder about home time arrangements.

Now that the playground works and the repairs to the pitch are finished, we would like to revert back to **home time arrangements** where **Year 3 and Year 4 classes** go home through the **back gate**.

We had a trial period for using the KS2 gate, however we feel that with the narrow gate and the compacted area in front of the gate, there is a lot of congestion.

This causes health and safety concerns. To keep everyone safe, we decided to go back to the arrangements from before the playground works.

Please, note that we will keep the arrangements we had for families with younger and older siblings previously, when we were using the back gate. Could you let Ms Herman in the office know if you need your child to join their sibling at their gate and she will co-ordinate with the class teachers.

We will restart this arrangement for Year 3 and Year 4 using the back gate for home time on **Tuesday 6th May**.

Uniform

Thank you to the vast majority of our pupils who wear their full school uniform. We have noticed that quite a few children do not have their ties whilst at school. Please, note that the school tie is part of our school uniform. Could you, please ensure that your child wears the tie to school every day,

Pupils should be wearing **school shoes** when they are not wearing trainers as part of their PE uniform. Quite a few pupils are wearing colourful trainers, which are **not** part of the uniform, and we ask that you kindly check with your child and make sure they wear full school uniform, which includes black shoes.

Please note that if for any reason your child is not in full school uniform or full PE kit, we expect a note from parents to explain why this is the case.

Jewellery and Expensive items

As part of our school uniform, the children are allowed to wear small studs. Any long, dangling earrings might be the cause of accidents and therefore are not allowed.

If children wear necklaces with any religious symbols, please, make sure that your child is aware that these need to be tucked under the clothing for health and safety reasons.

As you are aware, we advise that children do not bring any expensive items to school, as we **cannot take responsibility for loss or damage**. Only children in Y5 and Y6, who have permission to walk to and from school on their own, can bring phones to school. However, they have to hand them in at the gate and pick them up from their teachers at the end of the day. During school hours the phones are stored in the safe.

Pandora bracelets as well as other bracelets and necklaces or "smart" watches are **not allowed** as they can create a health and safety hazard. In addition, they are often expensive or hold sentimental value.

Additionally, as “smart” watches are connected to other devices via the Internet, they are therefore **not allowed at school for safeguarding reasons**. This is in line with government and local authority guidelines and we ask parents to help us ensure that these guidelines are followed.

If you have any questions about any of the information above, please contact the office to make an appointment with a member of Senior Leadership Team.

Thank you for your support with these important issues.

Attendance

Congratulations to all the pupils who achieved 100% attendance this week!

Our overall attendance is the same as last week **is 92.00%**. This is extremely low and as a school community, we need to do much better. Our school target is **96.00%**.

If required we will arrange to meet with parents, to draw their attention to their children's absence. There is a strong correlation between school attendance and pupil outcomes. Please ensure your child is at school unless they are ill.

Holiday during term time

The government policy is that holidays during term times are not permitted, therefore the school **cannot authorise** any absence due to holidays during term times. If you take your child/ren out of school for a holiday during term time, they will be referred to the Local Authority if necessary. Please note this for any plans you are making for the new academic year 2024-25. The Department for Education expects parents/carers to organise holidays outside of the school term dates. Your child/ren's learning will suffer by taking them out of school and it may result in disruptions to the learning of others. We have already referred some families to the local authority who will issue a penalty notice.

Contacts

It is a requirement that the school has a minimum of **2 emergency telephone contact numbers** for your child. We need to be able to contact you at all times. Our admin team, endeavour to update our data systems with your details termly. This is essential for the wellbeing of your children and we need your help to ensure that you are contactable at all times. If there are any changes for 2024-25, please ensure you contact the school office at the beginning of the new academic year.

Look what we have been doing - Early Years Foundation Stage

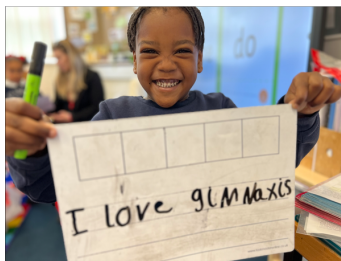
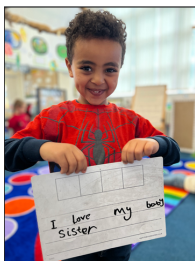
This week we would like to congratulate one of our Nursery pupils Vanessa, for her amazing achievement and taking part in the Hospice Mini Marathon for Kids.

Early Years

The whole of Early Years wished her good luck and gave her some advice on how to keep cool on Sunday. Vanessa was super proud to come back into school on Monday and show us her medal.

Well done, we are all super proud of you!

Reception class have been busy learning the tricky word 'love', they have written some independent sentences to consolidate their knowledge and are becoming super confident to remember to use finger spaces in between words. Well done!



Year 1 have been demonstrating fantastic teamwork in their P.E sessions with Coach. The children love their P.E sessions and look forward to them each week.

Year 1



Over the last six weeks or so, Year 2 have been observing one of nature's most wonderful activities: the metamorphosis of caterpillar larva into an adult butterfly.

Year 2

We saw how the caterpillars shed their skin to reveal a hard shell – the chrysalis. They started to emerge from their chrysalis's and then over the last week or so they started to fly away. It was a wonderful experience for the children to witness one of God's incredible creations



School



Breakfast Club

Breakfast Club runs from 8am and will cost **£4** per child, per day for children from Reception to Y6. Before your child/ren attends Breakfast Club, please ensure you book the sessions and make the required payments first.!

This provision is only available to children from Reception to Year 6.

www.schoolgateway.com

Avenue Youth Project Primary AfterSchool Provision

You can now sign up to the Avenue Youth Project for Afterschool Provision, they also provide a walking Bus Service.

ROUTE DETAILS

The walking bus journey begins at St Mary's Primary School main entrance, where children assemble at 3:15 PM. The route takes approximately 10 minutes, with arrival at The Avenues by 3:45. The journey includes four key crossing points, featuring a small crossing on East Row, another by the park on Kersal Road, followed by a zebra crossing which takes you to the bridge, providing access to Harrow Road. At Harrow Road, the group will cross at the traffic lights and cross again onto Third Avenue.

[See Route Here](#)

A WALKING BUS SERVICE

To establish a safe and supervised walking bus service connecting St Mary's Primary School, St Charles Primary School, and The Avenues Youth Project, the walking bus will ensure students in Years 3-6 can access quality after-school activities through reliable, supervised walking routes between the schools and after-school service.

The walking bus addresses the current financial barrier of £75 per day after-school club costs which has limited student participation. The service will incorporate road safety education as an important part of the daily journey.

The walking bus builds on the existing relationship between St Mary's and the Avenues while expanding the reach to include St Charles Primary. Through this coordinated approach, the walking bus will transform access to the Avenues after school activities, making them easily accessible to all students regardless of their families' employment status.

For more info go to our webpage:
www.avenues.org.uk/zoneclubs

THE AVENUES YOUTH PROJECT

TERM TIME

WHAT'S ON FOR JUNIORS

Y3	Y4	Y5	Y6
MON 15:30-18:00 Zone Clubs 15:30-18:00 Zone Clubs 15:30-18:00 Zone Clubs 15:30-18:00 Zone Clubs	TUE 15:30-18:00 Zone Clubs 15:30-18:00 Zone Clubs 15:30-18:00 Zone Clubs 15:30-18:00 Zone Clubs	WED 15:30-18:00 Zone Clubs 15:30-18:00 Zone Clubs 15:30-18:00 Zone Clubs 15:30-18:00 Zone Clubs	THU 15:30-18:00 Zone Clubs 15:30-18:00 Zone Clubs 15:30-18:00 Zone Clubs 15:30-18:00 Zone Clubs

Zone Clubs is a unique youth program for kids ages 8-11 that runs every Monday to Wednesday from 15:30 to 18:00.

WHAT WE OFFER

Our primary provision is for 8-11 year olds, Years 3-6.

HOLIDAYS

SPRING TERM

15:30-18:00
Zone Clubs
15:30-18:00
Zone Clubs
15:30-18:00
Zone Clubs
15:30-18:00
Zone Clubs

SUMMER TERM

15:30-18:00
Zone Clubs
15:30-18:00
Zone Clubs
15:30-18:00
Zone Clubs
15:30-18:00
Zone Clubs

AUTUMN TERM

15:30-18:00
Zone Clubs
15:30-18:00
Zone Clubs
15:30-18:00
Zone Clubs
15:30-18:00
Zone Clubs

SCHOOL HOLIDAYS

15:30-18:00
Zone Clubs
15:30-18:00
Zone Clubs
15:30-18:00
Zone Clubs
15:30-18:00
Zone Clubs

Akvita Wraparound Care

Aktiva Camps After School Club hosted at the Ark Brunel Hub! Aktiva has created a safe, fun, and friendly environment for our children.



Club Information: Aktiva After School Club will run from the end of the school day until 6:00 PM. The children will be collected from their classes at the end of the school day and brought over to the Ark Brunel hub by walking bus by 3.40pm where they will be registered into our after-school club. There are 2 sessions available to book - Early session 3.30pm-4.30pm and a full session 3.30pm-6pm

Contact Information: Aktiva's Ark Brunel contact number: 07776657491 - only available during service (3.30pm - 6pm). For all queries regarding bookings please email bookings@aktivacamps.com or call our parent enquiry number on **0203 551 8909**.

Booking Aktiva Services:

Single Sessions: Book until 1 PM on the same day for After School Club. This flexibility allows parents to use our services as needed. Places are subject to availability and strict cutoffs.

Booking and Pricing: Please visit www.aktivacamps.com to register yourself and your child/children and select the required service.



Star of the Week

Congratulations to all the pupils who have received **Star of the Week Certificate - Friday 16th May 2025**

Star of the week:

Nursery - Jessica

Reception - Lillie

Y1 - Yoel

Y2 - Novena

Y3 - Whole Class

Y4 - Nevaeh

Y5 - Amy, Layla, Amarach, Gideon, Jericho, Adrien and Nicholas

Y6 - Whole Class

Star Readers

Y1 - Naomi

Y2 - Major

Y3 - Mariam

Y4 - Nelly

Y5 - Mohamed

Congratulations to all the Stars of the Week and Star Readers!

Term Dates 2024-2025

Term Dates 2024 - 2025

Summer Term – 2025

First Half Term

Staff Training – Tuesday 22nd April – **School Closed**

First Day of School – Wednesday 23rd April

Bank Holiday – Monday 5th May

Last Day of School – Friday 23rd May

Half Term – Monday 26th May – Friday 30th May

Second Half Term

First Day of School – Monday 2nd June

Staff Training – Monday 30th June – **School Closed**

Last Day of School – Tuesday 22nd July - **1.30pm - School Closed**

FACEBOOK

INSTAGRAM

TWITTER



St Mary's Catholic Primary School

Email: info@st-marys.rbkc.sch.uk

Website: <https://www.st-marys.rbkc.sch.uk/>

Location: [East Row, London W10 5AW, UK](#)

Phone: 020 8969 0321

C

Charles Mary

Charles is using Smore to create beautiful newsletters