

St Marys Catholic Primary School

'Learning together in Faith and Love'

St Mary's Catholic Primary School



E-SAFETY POLICY

St Marys Catholic Primary School

'Learning together in Faith and Love'

Mission Statement

"Learning together in Faith and Love"

St. Mary's Catholic Primary School exists to serve the Roman Catholic families of the Parish of Our Lady of the Holy Souls, Kensal New Town and other local parishes.

The aims of our schools are:

- To promote Christian values where children live, learn and celebrate the teaching of Christ.
- To provide a curriculum which is broad, balanced and meaningful and where children can experience enjoyment and fulfilment.
- To promote the highest standards of teaching and learning within the framework of the National Curriculum
- To develop in each child a sense of achievement, value and self-worth and to achieve the standards of which they are capable.
- To help our children acquire the skills of independent learning and make sufficiently rapid progress.
- To provide a safe and secure environment where children feel valued, and where they respect, help and care for each other.
- To involve parents in all aspects of their child's education and promote good home/school partnership.
- To develop in our children awareness and respect for the different cultures and religions represented in society and their responsibility to the wider community.
- To foster the continuing development of staff, parents and governors in serving the community.

St. Mary's Values- these are the values that underpin all areas of our school community:

- Kindness
- Respect
- Tolerance
- Honesty
- Responsibility (for ourselves and our world)
- Co-operation

St Marys Catholic Primary School

'Learning together in Faith and Love'

Contents

Introduction and Overview

- Rationale and Scope
- Roles and responsibilities
- How the policy be communicated to staff/pupils/community
- Handling complaints
- Review and Monitoring

Education and Curriculum

- Pupil e-safety curriculum
- Staff and governor training
- Parent awareness and training

3. Expected Conduct and Incident Management

4. Managing the ICT Infrastructure

- Internet access, security (virus protection) and filtering
- Network management (user access, backup, curriculum and admin)
- Passwords policy
- E-mail • School website
- Learning platform
- Social networking
- Video Conferencing

5. Data Security

- Management Information System access
- Data transfer

6. Equipment and Digital Content

- Personal mobile phones and devices
- Digital images and video
- Asset disposal

7. Filtering and Monitoring

St Marys Catholic Primary School

'Learning together in Faith and Love'

Appendices:

1. Acceptable Use Agreement (Staff)
2. Acceptable Use Agreement (Pupils)
3. Acceptable Use Agreement including photo/video permission (Parents)

2 1. Introduction and Overview

St Mary's Catholic Primary School E-Safety Policy is based on content from the LGfL E-Safety Policy Revision 2015 v1, published 03/01/2015

Rationale

The purpose of this policy is to:

- set out the key principles expected of all members of the school community at St Mary's Catholic Primary School with respect to the use of ICT-based technologies.
- safeguard and protect the children and staff of St Mary's Catholic Primary School.
- assist school staff working with children to work safely and responsibly with the Internet and other communication technologies and to monitor their own standards and practice.
- set clear expectations of behaviour and/or codes of practice relevant to responsible use of the Internet for educational, personal or recreational use.
- have clear structures to deal with online abuse such as cyberbullying which are cross referenced with other school policies.
 - ensure that all members of the school community are aware that unlawful or unsafe behaviour is unacceptable and that, where appropriate, disciplinary or legal action will be taken.
- minimise the risk of misplaced or malicious allegations made against adults who work with students.

The main areas of risk for our school community can be summarised as follows:

Content

- exposure to inappropriate content, including online pornography, ignoring age ratings in games (exposure to violence associated with often racist language), substance abuse
- lifestyle websites, for example pro-anorexia/self-harm/suicide sites
- hate sites
- content validation: how to check authenticity and accuracy of online content
Contact Senior Leadership Team
- grooming
- cyber-bullying in all forms
- identity theft (including 'fraud' (hacking Facebook profiles)) and sharing passwords
Conduct

St Marys Catholic Primary School

'Learning together in Faith and Love'

- privacy issues, including disclosure of personal information
- digital footprint and online reputation
- health and well-being (amount of time spent online (Internet or gaming))
- sexting (sending and receiving of personally intimate images) also referred to as SGII (self-generated indecent images)

copyright (little care or consideration for intellectual property and ownership – such as music and film)

(Ref Ofsted 2013)

Scope

This policy applies to all members of St Mary's Catholic Primary School community (including staff, students / pupils, volunteers, parents / carers, visitors, community users) who have access to and are users of school / academy ICT systems, both in and out of St Mary's Catholic Primary School.

The Education and Inspections Act 2006 empowers Headteachers to such extent as is reasonable, to regulate the behaviour of pupils when they are off the school site and empowers members of staff to impose disciplinary penalties for inappropriate behaviour. This is pertinent to incidents of cyber-bullying, or other e-safety incidents covered by this policy, which may take place outside of the school, but is linked to membership of the school. The 2011 Education Act increased these powers with regard to the searching for and of electronic devices and the deletion of data (see appendix for template policy). In the case of both acts, action can only be taken over issues covered by the published Behaviour Policy.

The school will deal with such incidents within this policy and associated behaviour and anti-bullying policies and will, where known, inform parents / carers of incidents of inappropriate e-safety behaviour that take place out of school.

Role	Key Responsibilities
Headteacher	<ul style="list-style-type: none">• To take overall responsibility for e-safety provision• To take overall responsibility for data and data security (SIRO)• To ensure the school uses an approved, filtered Internet Service, which complies with current statutory requirements e.g. LGfL• To be responsible for ensuring that staff receive suitable training to carry out their e-safety roles and to train other colleagues, as relevant• To be aware of procedures to be followed in the event of a serious e-safety incident.• To receive regular monitoring reports from the E-Safety Coordinator / Officer

St Marys Catholic Primary School

'Learning together in Faith and Love'

	<ul style="list-style-type: none"> To ensure that there is a system in place to monitor and support staff who carry out internal e-safety procedures (e.g. network manager)
E-Safety Co-ordinator / Designated Child Protection Lead	<ul style="list-style-type: none"> Takes day to day responsibility for e-safety issues and has a leading role in establishing and reviewing the school e-safety policies / documents Promotes an awareness and commitment to e-safeguarding throughout the school community Ensures that e-safety education is embedded across the curriculum Liaises with school ICT technical staff To communicate regularly with SLT and the designated e-safety Governor / committee to discuss current issues, review incident logs and filtering / change control logs To ensure that all staff are aware of the procedures that need to be Role Key Responsibilities followed in the event of an e-safety incident To ensure that an e-safety incident log is kept up to date Facilitates training and advice for all staff liaises with the Local Authority and relevant agencies Is regularly updated in e-safety issues and legislation, and be aware of the potential for serious child protection issues to arise from: <ul style="list-style-type: none"> sharing of personal data access to illegal / inappropriate materials inappropriate on-line contact with adults / strangers potential or actual incidents of grooming • cyber-bullying and use of social media
Governors/E-safety governor	<ul style="list-style-type: none"> To ensure that the school follows all current e-safety advice to keep the children and staff safe To approve the E-Safety Policy and review the effectiveness of the policy. This will be carried out by the Governors / Governors Sub Committee receiving regular information about e-safety incidents and monitoring reports. A member of the Governing Body has taken on the role of E-Safety Governor To support the school in encouraging parents and the wider community to become engaged in e-safety activities The role of the E-Safety Governor will include: regular review with the E-Safety Co-ordinator / Officer (including e-safety incident logs, filtering / change control logs)
Computing Curriculum Leader	<ul style="list-style-type: none"> To oversee the delivery of the e-safety element of the Computing curriculum To liaise with the e-safety coordinator regularly

St Marys Catholic Primary School

'Learning together in Faith and Love'

Technician	<ul style="list-style-type: none"> • To report any e-safety related issues that arises, to the e-safety coordinator. • To ensure that users may only access the school's networks through an authorised and properly enforced password protection policy, in which passwords are regularly changed • To ensure that provision exists for misuse detection and malicious attack e.g. keeping virus protection up to date) • To ensure the security of the school ICT system • To ensure that access controls / encryption exist to protect personal and sensitive information held on school-owned devices • The school's policy on web filtering is applied and updated on a regular basis • That he / she keeps up to date with the school's e-safety policy and technical information in order to effectively carry out their e-safety role and to inform and update others as relevant • That the use of the network / remote access / email is regularly monitored in order that any misuse / attempted misuse can be reported to the E-Safety Co-ordinator / Officer / Headteacher for investigation / action / sanction •To ensure appropriate backup procedures exist so that critical.Responsibilities information and systems can be recovered in the event of a disaster. • To keep up-to-date documentation of the school's e-security and technical procedures
Data Manager	<ul style="list-style-type: none"> • To ensure that all data held on pupils on the school office machines have appropriate access controls in place
LGfL Nominated contact(s)	<ul style="list-style-type: none"> • To ensure all LGfL services are managed on behalf of the school including maintaining the LGfL USO database of access accounts Teachers
Teachers	<ul style="list-style-type: none"> • To embed e-safety issues in all aspects of the curriculum and other school activities • To supervise and guide pupils carefully when engaged in learning activities involving online technology (including, extra-curricular and extended school activities if relevant) • To ensure that pupils are fully aware of research skills and are fully aware of legal issues relating to electronic content such as copyright laws
All Staff	<ul style="list-style-type: none"> • To read, understand and help promote the school's e-safety policies and guidance • To read, understand, sign and adhere to the school staff Acceptable Use Agreement / Policy • To be aware of e-safety issues related to the use of mobile phones, cameras and hand held devices and that they monitor their use and implement current school policies with regard to these devices

St Marys Catholic Primary School

'Learning together in Faith and Love'

	<ul style="list-style-type: none"> • To report any suspected misuse or problem to the e-safety coordinator • To maintain an awareness of current e-safety issues and guidance e.g. through CPD • To model safe, responsible and professional behaviours in their own use of technology • To ensure that any digital communications with pupils should be on a professional level and only through school based systems, never through personal mechanisms, e.g. email, text, mobile phones etc. Pupils • Read, understand, sign and adhere to the Student / Pupil Acceptable Use Policy (NB: at KS1 it would be expected that parents / carers would sign on behalf of the pupils) • Have a good understanding of research skills and the need to avoid plagiarism and uphold copyright regulations • To understand the importance of reporting abuse, misuse or access to inappropriate materials • To know what action to take if they or someone they know feels worried or vulnerable when using online technology. • To know and understand school policy on the use of mobile phones, digital cameras and hand held devices. • To know and understand school policy on the taking / use of images and on cyber-bullying. • To understand the importance of adopting good e-safety practice when using digital technologies out of school and realise that the school's E-Safety Policy covers their actions out of school, if related to their membership of the school • To take responsibility for learning about the benefits and risks of using the Internet and other technologies safely both in school and at home • To help the school in the creation/ review of e-safety policies
Parents/carers	<ul style="list-style-type: none"> • To support the school in promoting e-safety and endorse the Parents' Acceptable Use Agreement which includes the pupils' use of the Internet and the school's use of photographic and video images • To read, understand and promote the school Pupil Acceptable Use Agreement with their children • to access the school website in line with the relevant school Acceptable Use Agreement. • To consult with the school if they have any concerns about their children's use of technology
External groups	<ul style="list-style-type: none"> • Any external individual / organisation will sign an Acceptable Use Policy prior to using any equipment or the Internet within school

St Marys Catholic Primary School

'Learning together in Faith and Love'

Communication:

The policy will be communicated to staff/pupils/community in the following ways:

- Policy to be posted on the school website
- Policy to be part of school induction pack for new staff
- Acceptable use agreements discussed with pupils at the start of each year.

- Acceptable use agreements to be issued to whole school community, usually on entry to the school
- Acceptable use agreements to be held in pupil and personnel files

Handling complaints:

- The school will take all reasonable precautions to ensure e-safety. However, owing to the international scale and linked nature of Internet content, the availability of mobile technologies and speed of change, it is not possible to guarantee that unsuitable material will never appear on a school computer or mobile device. Neither the school nor the Local Authority can accept liability for material accessed, or any consequences of Internet access.

- Staff and pupils are given information about infringements in use and possible sanctions. Sanctions available include:
 - interview/counselling by Inclusion Leader/Learning Mentor / Head of Phase / E-Safety Co-ordinator / Headteacher/ Deputy Headteacher;
 - informing parents or carers;
 - removal of Internet or computer access for a period
 - referral to LA / Police.

- Our E-Safety Coordinator acts as first point of contact for any complaint. Any complaint about staff misuse is referred to the Headteacher.

- Complaints of cyberbullying are dealt with in accordance with our Anti-Bullying Policy. Complaints related to child protection are dealt with in accordance with school / LA child protection procedures.

Review and Monitoring

The e-safety policy is referenced from within other school policies and Mission Statement: ICT and Computing policy, Child Protection policy, and in the School Improvement Plan, Behaviour policy, Personal, Social and Health Education and for Citizenship policies.

- The school has an e-safety coordinator who will be responsible for document ownership, review and updates.
- The e-safety policy will be reviewed annually or when any significant changes occur with regard to the technologies in use within the school

St Marys Catholic Primary School

'Learning together in Faith and Love'

- The e-safety policy has been written by the school e-safety Coordinator and is current and appropriate for its intended audience and purpose.
- There is widespread ownership of the policy and it has been agreed by the SLT and approved by Governors and other stakeholders such as the PTA. All amendments to the school e-safeguarding policy will be discussed in detail with all members of teaching staff.

2. Education and Curriculum Pupil e-safety curriculum

This school

- Has a clear, progressive e-safety education programme as part of the Computing curriculum / PSHE curriculum. It is built on LA e-safeguarding and e-literacy framework for EYFS to Y6/ national guidance. This covers a range of skills and behaviours appropriate to their age and experience, including:
 - to STOP and THINK before they CLICK
 - to develop a range of strategies to evaluate and verify information before accepting its accuracy; o to be aware that the author of a web site / page may have a particular bias or purpose and to develop skills to recognise what that may be; o to know how to narrow down or refine a search;
 - [for older pupils] to understand how search engines work and to understand that this affects the results they see at the top of the listings;
 - to understand acceptable behaviour when using an online environment / email, i.e. be polite, no bad or abusive language or other inappropriate behaviour; keeping personal information private;
 - to understand how photographs can be manipulated and how web content can attract the wrong sort of attention; o to understand why on-line 'friends' may not be who they say they are and to understand why they should be careful in online environments;
 - to understand why they should not post or share detailed accounts of their personal lives, contact information, daily routines, location, photographs and videos and to know how to ensure they have turned-on privacy settings;
 - to understand why they must not post pictures or videos of others without their permission; o to know not to download any files – such as music files - without permission;
 - to have strategies for dealing with receipt of inappropriate materials;
 - [for older pupils] to understand why and how some people will 'groom' young people for sexual reasons;
 - To understand the impact of cyberbullying, sexting and trolling and know how to seek help if they are affected by any form of online bullying.
 - To know how to report any abuse including cyberbullying; and how to seek help if they experience problems when using the Internet and related technologies, i.e. parent or carer, teacher or trusted staff member, or an organisation such as ChildLine or the CLICK CEOP button.
- Plans Internet use carefully to ensure that it is age-appropriate and supports the learning objectives for specific curriculum areas.

St Marys Catholic Primary School

'Learning together in Faith and Love'

- Will remind students about their responsibilities through an end-user Acceptable Use Policy which every student will sign/will be displayed throughout the school/will be displayed when a student logs on to the school network.
- Ensures staff will model safe and responsible behaviour in their own use of technology during lessons.
- Ensures that when copying materials from the web, staff and pupils understand issues around plagiarism; how to check copyright and also know that they must respect and acknowledge copyright / intellectual property rights;
- Ensures that staff and pupils understand the issues around aspects of the commercial use of the Internet, as age appropriate. This may include, risks in popups; buying on-line; on-line gaming / gambling; Staff and governor training This school
- Ensures staff know how to send or receive sensitive and personal data and understand the requirement to encrypt data where the sensitivity requires data protection;
- Makes regular training available to staff on e-safety issues and the school's e-safety education program;
- Provides, as part of the induction process, all new staff [including those on university/college placement and work experience] with information and guidance on the e-safeguarding policy and the school's Acceptable Use Policies.

Parent awareness and training

This school:

- Runs a rolling programme of advice, guidance and training for parents, including:
 - Introduction of the Acceptable Use Agreements to new parents, to ensure that principles of e-safe behaviour are made clear
 - Information leaflets; in school newsletters; on the school web site;
 - demonstrations, practical sessions held at school;
 - suggestions for safe Internet use at home; o provision of information about national support sites for parents.
 - Workshops led by Metropolitan Police/Safer Neighbourhood and ICT providers

3. Expected Conduct and Incident Management

Expected conduct

In this school, all users:

- are responsible for using the school ICT systems in accordance with the relevant Acceptable Use Policy
- need to understand the importance of misuse or access to inappropriate materials and are aware of the consequences
- need to understand the importance of reporting abuse, misuse or access to inappropriate materials and know how to do so
- should understand the importance of adopting good e-safety practice when using digital technologies out of school and realise that the school's

St Marys Catholic Primary School

'Learning together in Faith and Love'

E-Safety Policy covers their actions out of school, if related to their membership of the school

- will be expected to know and understand school policies on the use of mobile phones, digital cameras and hand held devices. They should also know and understand school policies on the taking / use of images and on cyber-bullying

Staff

- is responsible for reading the school's e-safety policy and using the school ICT systems accordingly, including the use of mobile phones, and hand held devices.

Students/Pupils

- should have a good understanding of research skills and the need to avoid plagiarism and uphold copyright regulations

Parents/Carers

- should provide consent for pupils to use the Internet, as well as other technologies, as part of the e-safety acceptable use agreement form at time of their child's entry to the school
- should know and understand what the 'rules of appropriate use' are and what sanctions result from misuse

Incident Management

In this school:

- there is strict monitoring and application of the e-safety policy and a differentiated and appropriate range of sanctions, though the attitudes and behaviour of users are generally positive and there is rarely need to apply sanctions
- all members and its wider community are encouraged to be vigilant in reporting issues, in the confidence that issues will be dealt with quickly and sensitively, through the school's escalation processes. o support is actively sought from other agencies as needed (e.g. the local authority and regional broadband grid, UK Safer Internet Centre helpline) in dealing with e-safety issues
- monitoring and reporting of e-safety incidents takes place and contribute to developments in policy and practice in e-safety within the school. The records are reviewed/audited and reported to the school's senior leaders, Governors /the LA / LSCB
- parents / carers are specifically informed of e-safety incidents involving young people for whom they are responsible.
- We will contact the Police if one of our staff or pupils receives online communication that we consider is particularly disturbing or breaks the law

St Marys Catholic Primary School

'Learning together in Faith and Love'

4. Managing the ICT infrastructure

• Internet access, security (virus protection) and filtering

This school:

- Has the educational filtered secure broadband connectivity through the LGfL and so connects to the 'private' National Education Network;
- Uses the Borough Sweeper filtering system which blocks sites that fall into categories such as pornography, race hatred, gaming, sites of an illegal nature, etc. All changes to the filtering policy is logged and only available to staff with the approved 'web filtering management' status;
- Uses USO user-level filtering where relevant, thereby closing down or opening up options appropriate to the age / stage of the students;
- Ensures network healthy through use of Sophos anti-virus software (from LGfL) etc. and network set-up so staff and pupils cannot download executable files; ○ Uses DfE, LA approved systems such as S2S, USO FX, secured email to send personal data over the Internet and uses encrypted devices or secure remote access where staff need to access personal level data off-site;
- Blocks all Chat rooms and social networking sites except those that are part of an educational network or approved Learning Platform;
- Only unblocks other external social networking sites for specific purposes / Internet Literacy lessons; ○ Has blocked pupil access to music download or shopping sites – except those approved for educational purposes at a regional or national level, such as Audio Network;
- Uses security time-outs on Internet access where practicable / useful; ○ Works in partnership with the LGfL to ensure any concerns about the system are communicated so that systems remain robust and protect students;
- Is vigilant in its supervision of pupils' use at all times, as far as is reasonable, and uses common-sense strategies in learning resource areas where older pupils have more flexible access;
- Ensures all staff and students have signed an acceptable use agreement form and understands that they must report any concerns;
- Ensures pupils only publish within an appropriately secure environment: the school's learning environment/ the London LEARNING PLATFORM/ LGfL secure platforms such as J2Bloggy, etc.
- Requires staff to preview websites before use [where not previously viewed or cached] and encourages use of the school's Learning Platform as a key way to direct students to age / subject appropriate web sites; Plans the curriculum context for Internet use to match pupils' ability, using child-friendly search engines where more open Internet searching is required; e.g. yahoo for kids or ask for kids , Google Safe Search ,
- Never allows / Is vigilant when conducting 'raw' image search with pupils e.g. Google image search;

St Marys Catholic Primary School

'Learning together in Faith and Love'

- Informs all users that Internet use is monitored;
- Informs staff and students that they must report any failure of the filtering systems directly to the [system administrator / teacher / person responsible for URL filtering]. Our system administrator(s) logs or escalates as appropriate to the Technical service provider;

- Makes clear all users know and understand what the 'rules of appropriate use' are and what sanctions result from misuse – through staff meetings and teaching programme;
- Provides advice and information on reporting offensive materials, abuse/ bullying etc. available for pupils, staff and parents
- Immediately refers any material we suspect is illegal to the appropriate authorities – Police – and the LA.

• **Network management (user access, backup)**

This school

- Uses individual, audited log-ins for all users - the London USO system;
- Uses guest accounts occasionally for external or short term visitors for temporary access to appropriate services
- Uses teacher 'remote' management control tools for controlling workstations / viewing users / setting-up applications and Internet web sites, where useful;
- Has additional local network auditing software installed; ○ Ensures the Systems Administrator / network manager is up-to-date with the Borough services and policies / requires the Technical Support Provider to be up-to-date with LGfL services and policies;
- Storage of all data within the school will conform to the UK data protection requirements Pupils and Staff using mobile technology, where storage of data is online, will conform to the EU data protection directive where storage is hosted within the EU.

To ensure the network is used safely, this school:

- Ensures staff read and sign that they have understood the school's e-safety Policy. Following this, they are set-up with Internet, email access and network access. Online access to service is through a unique, audited username and password.
- Staff access to the schools' management information system is controlled through a separate password for data security purposes;
- We provide pupils with an individual network log-in username. From Year 1 they are also expected to use a personal password;

St Marys Catholic Primary School

'Learning together in Faith and Love'

- All pupils have their own unique username and password which gives them access to the Internet
- Makes clear that no one should log on as another user and makes clear that pupils should never be allowed to log-on or use teacher and staff logins as these have far less security restrictions and inappropriate use could damage files or the network;
- Has set-up the network with a shared work area for pupils and one for staff. Staff and pupils are shown how to save work and access work from these areas;
- Requires all users to always log off when they have finished working or are leaving the computer unattended;
- Where a user finds a logged-on machine, we require them to always log-off and then log-on again as themselves.
- Requests that teachers and pupils do not switch the computers off during the day unless they are unlikely to be used again that day or have completely crashed. We request that they DO switch the computers off at the end of the day and we also automatically switch off all computers at the end of the school day to save energy;
- Has set-up the network so that users cannot download executable files / programmes;
- Has blocked access to music/media download or shopping sites – except those approved for educational purposes;
- Scans all mobile equipment with anti-virus / spyware before it is connected to the network;
- Makes clear that staff are responsible for ensuring that all equipment that goes home has the anti-virus and spyware software maintained up-to-date and the school provides them with a solution to do so;
- Makes clear that staff are responsible for ensuring that any computer or laptop loaned to them by the school, is used solely to support their professional responsibilities and that they notify the school of any "significant personal use" as defined by HM Revenue & Customs.
- Makes clear that staff accessing LA systems do so in accordance with any Corporate policies; e.g. Borough email or Intranet; finance system, Personnel system etc.
- Maintains equipment to ensure Health and Safety is followed; e.g. projector filters cleaned by site manager / TA; equipment installed and checked by approved Suppliers / LA electrical engineers
- Has integrated curriculum and administration networks, but access to the Management Information System is set-up so as to ensure staff users can only access modules related to their role; e.g. teachers access report writing module; SEN coordinator - SEN data;
- Ensures that access to the school's network resources from remote locations by staff is restricted and access is only through school / LA approved systems: e.g. teachers access their area / a staff shared area for planning documentation via a VPN solution / RAV3 system;
- Does not allow any outside Agencies to access our network remotely except where there is a clear professional need and then access is restricted and is only through approved systems; e.g. technical support or MIS Support, our Education Welfare Officers accessing 15 attendance data on specific children, parents using a secure portal to access information on their child;
- Provides pupils and staff with access to content and resources through the approved Learning Platform which staff and pupils access using their username and password (their USO username and password);

St Marys Catholic Primary School

'Learning together in Faith and Love'

- Makes clear responsibilities for the daily back up of MIS and finance systems and other important files;
- Has a clear disaster recovery system in place for critical data that includes a secure, remote back up of critical data, that complies with external Audit's requirements;
- Uses our broadband network for our CCTV system and have had set-up by approved partners; • Uses the DfE secure s2s website for all CTF files sent to other schools;
- Ensures that all pupil level data or personal data sent over the Internet is encrypted or only sent within the approved secure system in our LA or through USO secure file exchange (USO FX); • Follows ISP advice on Local Area and Wide Area security matters and firewalls and routers have been configured to prevent unauthorised use of our network;
- Our wireless network has been secured to industry standard Enterprise security level /appropriate standards suitable for educational use;
- All computer equipment is installed professionally and meets health and safety standards;
- Projectors are maintained so that the quality of presentation remains high;
- Reviews the school ICT systems regularly with regard to health and safety and security.

Password policy

- This school makes it clear that staff and pupils must always keep their password private, must not share it with others and must not leave it where others can find it;
- All staff have their own unique username and private passwords to access school systems. Staff are responsible for keeping their password private.

E-mail

This school

- Provides staff with an email account for their professional use, London Staff mail, and makes clear personal email should be through a separate account;
- Does not publish personal e-mail addresses on the school website. We use anonymous or group e-mail addresses, for example info@st-marys.rbkc.sch.uk
- Will contact the Police if one of our staff or pupils receives an e-mail that we consider is particularly disturbing or breaks the law.
- Will ensure that email accounts are maintained and up to date
- Reports messages relating to or in support of illegal activities to the relevant Authority and if necessary to the Police.
- Knows that spam, phishing and virus attachments can make e mails dangerous. We use a number of LGfL-provided technologies to help protect users and systems in the school, including desktop anti-virus product Sophos, plus direct email filtering for viruses, Trojans, pornography, phishing and inappropriate language., Finally, and in support of these, LGfL WebScreen2 filtering monitors and protects our Internet access to the World Wide Web.

Pupils:

- We use LGfL LondonMail with pupils and lock this down where appropriate using Borough SafeMail rules.

St Marys Catholic Primary School

'Learning together in Faith and Love'

- Pupils' LGfL LondonMail e-mail accounts are intentionally 'anonymised' for their protection.
- Pupils are introduced to, and use e-mail as part of the Computing scheme of work.
- Pupils can only receive external mail from, and send external mail to, addresses if the SafeMail rules have been set to allow this.
- Pupils are taught about the safety and 'netiquette' of using e-mail both in school and at home i.e. they are taught:
 - not to give out their e-mail address unless it is part of a school managed project or to someone they know and trust and is approved by their teacher or parent/carer;
 - that an e-mail is a form of publishing where the message should be clear, short and concise; ○ that any e-mail sent to an external organisation should be written carefully and authorised before sending, in the same way as a letter written on school headed paper;
 - they must not reveal private details of themselves or others in e-mail, such as address, telephone number, etc.;
 - to 'Stop and Think Before They Click' and not open attachments unless sure the source is safe; ○ that they should think carefully before sending any attachments;
 - embedding adverts is not allowed; ○ that they must immediately tell a teacher / responsible adult if they receive an e-mail which makes them feel uncomfortable, is offensive or bullying in nature;
 - not to respond to malicious or threatening messages; ○ not to delete malicious or threatening e-mails, but to keep them as evidence of bullying;
 - not to arrange to meet anyone they meet through e-mail without having discussed with an adult and taking a responsible adult with them;
 - that forwarding 'chain' e-mail letters is not permitted.
- Pupils sign the school Agreement Form to say they have read and understood the E-safety rules, including e-mail and we explain how any inappropriate use will be dealt with.

Staff:

- Staff can only use the LA or LGfL e mail systems on the school system
- Staff only use LA or LGfL e-mail systems for professional purposes
- Access in school to external personal e mail accounts may be blocked
- Staff use a 'closed' LA email system which is used for LA communications and some 'LA approved' transfers of information;
- Never use email to transfer staff or pupil personal data. We use secure, LA / DfE approved systems. These include: S2S (for school to school transfer); Collect; USOFX, named LA system;

St Marys Catholic Primary School

'Learning together in Faith and Love'

- Staff know that e-mail sent to an external organisation must be written carefully, (and may require authorisation), in the same way as a letter written on school headed paper. That it should follow the school 'house-style':

- the sending of multiple or large attachments should be limited, and may also be restricted by the provider of the service being used;
- the sending of chain letters is not permitted; ○ embedding adverts is not allowed; School website
- The Headteacher takes overall responsibility to ensure that the website content is accurate and the quality of presentation is maintained;
- Uploading of information, except to class blogs is restricted to our website authorisers
- The school web site complies with the statutory DfE guidelines for publications; ○ Most material is the school's own work; where other's work is published or linked to, we credit the sources used and state clearly the author's identity or status;
- The point of contact on the web site is the school address, telephone number and we use a general email contact address, e.g. East Row, London W10 5AW 020 8969 0321, info@st-marys.rbkc.sch.uk
- Home information or individual e-mail identities will not be published;
- Photographs published on the web do not have full names attached;
- We do not use pupils' names when saving images in the file names or in the tags when publishing to the school website;
- We do not use embedded geo-data in respect of stored images
- We expect teachers using' school approved blogs or wikis to password protect them and run from the school website.

Social networking

Teachers are instructed not to run social network spaces for student use on a personal basis or to open up their own spaces to their students, but to use the schools' preferred system for such communications.

School staff will ensure that in private use:

- No reference should be made in social media to students / pupils, parents / carers or school staff
- They do not engage in online discussion on personal matters relating to members of the school community
- Personal opinions should not be attributed to the school or local authority
- Security settings on personal social media profiles are regularly checked to minimise risk of loss of personal information.

St Marys Catholic Primary School

'Learning together in Faith and Love'

CCTV

- We have CCTV in the school as part of our site surveillance for staff and student safety. We will not reveal any recordings (retained by the Support Provider for 28 days), without permission except where disclosed to the Police as part of a criminal investigation.
- We use specialist lesson recording equipment on occasions as a tool to share best teaching practice. We do not reveal any such recordings outside of the staff and will not use for any other purposes.

5. Data security: Management Information System access and Data transfer

Strategic and operational practices

At this school:

- The Head Teacher is the Senior Information Risk Officer (SIRO).
- Staff are clear who are the key contact(s) for key school information (the Information Asset Owners) are.
- We ensure staff know who to report any incidents where data protection may have been compromised.
- All staff are DBS checked and records are held in one central record by the school office manager

We ensure ALL the following school stakeholders sign an Acceptable Use Agreement form. We have a system so we know who has signed.

- staff,
- governors,
- pupils
- parents

This makes clear staffs' responsibilities with regard to data security, passwords and access.

- We follow LA guidelines for the transfer of any data, such as MIS data or reports of children, to professionals working in the Local Authority or their partners in Children's Services / Family Services, Health, Welfare and Social Services.
- We require that any Protected and Restricted material must be encrypted if the material is to be removed from the school and limit such data removal. We have an approved remote access solution so staff can access sensitive and other data from home, without need to take data home e.g. Pupil Asset, Integris
- School staff with access to setting-up usernames and passwords for email, network access and Learning Platform access are working within the approved system and follow the security processes required by those systems.
- We ask staff to undertaken at least annual house-keeping to review, remove and destroy any digital materials and documents which need no longer be stored.

Technical Solutions

- Staff have secure areas on the network to store sensitive documents or photographs.
- We require staff to log-out of systems when leaving their computer, but also enforce lock-out after a period of time has elapsed

St Marys Catholic Primary School

'Learning together in Faith and Love'

- We use encrypted flash drives if any member of staff has to take any sensitive information off site.
- We use the DfE S2S site to securely transfer CTF pupil data files to other schools.
- We use the Pan-London Admissions system (based on USO FX) to transfer admissions data.
- We use Borough USO FX to transfer other data to schools in London, such as references, reports of children.
- We use the Borough secure data transfer system, USO Auto Update, for creation of online user accounts for access to broadband services and the London content
- We store any Protect and Restricted written material in lockable storage cabinets in a lockable storage area.
- All servers are in lockable locations and managed by DBS-checked staff.
- We lock any back-up tapes in a secure, fire-proof cabinet. Back-ups are encrypted. No back-up tapes leave the site on mobile devices.
- We comply with the WEEE directive on equipment disposal by using an approved or recommended disposal company for disposal of equipment where any protected or restricted data has been held and get a certificate of secure deletion for any server that once contained personal data.
- Portable equipment loaned by the school (for use by staff at home), where used for any protected data, is disposed of through the same procedure.
- Paper based sensitive information is shredded, using cross cut shredder / collected by secure data disposal service.
- We are using secure file deletion software.

6. Equipment and Digital Content

Personal mobile phones and mobile devices

- Mobile phones brought into school are entirely at the staff member, student's and parents' or visitors own risk. The School accepts no responsibility for the loss, theft or damage of any phone or hand held device brought into school.
- Student mobile phones which are brought into school must be turned off (not placed on silent) and stored in the school office on arrival at school. They must remain turned off and out of sight until the end of the day. Staff members may use their phones during school break times. Only Year 6 children are allowed bring their mobile phones into school as they are allowed to walk home alone. Exceptional circumstances may be considered by the headteacher. All visitors are requested to keep their phones on silent.
- The recording, taking and sharing of images, video and audio on any mobile phone is to be avoided; except where it has been explicitly agreed otherwise by the Headteacher. Such authorised use is to be monitored and recorded. All mobile phone use is to be open to scrutiny and the Headteacher is to be able to withdraw or restrict authorisation for use at any time if it is to be deemed necessary.
- The School reserves the right to search the content of any mobile or handheld devices on the school premises where there is a reasonable suspicion that it may contain undesirable material, including those which promote pornography, violence or bullying. Staff mobiles or hand held devices may be searched at any time as part of routine monitoring.

St Marys Catholic Primary School

'Learning together in Faith and Love'

- Where parents or students need to contact each other during the school day, they should do so only through the School's telephone. Staff may use their phones during break times. If a staff member is expecting a personal call they may leave their phone with the school office to answer on their behalf, or seek specific permissions to use their phone at other than their break times.
- Mobile phones and personally-owned devices will not be used in any way during lessons or formal school time. They should be switched off or silent at all times.
- Mobile phones and personally-owned mobile devices brought in to school are the responsibility of the device owner. The school accepts no responsibility for the loss, theft or damage of personally-owned mobile phones or mobile devices.
- Mobile phones and personally-owned devices are not permitted to be used in certain areas within the school site, e.g. changing rooms and toilets.
- Mobile phones will not be used during lessons or formal school time unless as part of an approved and directed curriculum-based activity with consent from a member of staff.
- The Bluetooth or similar function of a mobile phone should be switched off at all times and not be used to send images or files to other mobile phones.
- Personal mobile phones will only be used during lessons with permission from the teacher.
- No images or videos should be taken on mobile phones or personally-owned mobile devices without the prior consent of the person or people concerned.
- All mobile phones and personally-owned devices will be handed in at reception should they be brought into school.

Students' use of personal devices

- The School strongly advises that student mobile phones should not be brought into school.
- The School accepts that there may be particular circumstances in which a parent wishes their child to have a mobile phone for their own safety.
- If a student breaches the school policy, then the phone or device will be confiscated and will be held in a secure place in the school office. Mobile phones and devices will be released to parents or carers in accordance with the school policy.
- Phones and devices must not be taken into examinations. Students found in possession of a mobile phone during an exam will be reported to the appropriate examining body. This may result in the student's withdrawal from either that examination or all examinations.
- If a student needs to contact his or her parents or carers, they will be allowed to use a school phone. Parents are advised not to contact their child via their mobile phone during the school day, but to contact the school office.
- Students should protect their phone numbers by only giving them to trusted friends and family members. Students will be instructed in safe and appropriate use of mobile phones and personally-owned devices and will be made aware of boundaries and consequences.
- Students will be provided with school mobile phones to use in specific learning activities under the supervision of a member of staff. Such mobile phones will be set up so that only those features required for the activity will be enabled.

St Marys Catholic Primary School

'Learning together in Faith and Love'

- No students should bring his or her mobile phone or personally-owned device into school. Any device brought into school will be confiscated.

Staff use of personal devices

- Staff handheld devices, including mobile phones and personal cameras must be noted in school – name, make & model, serial number. Any permitted images or files taken in school must be downloaded from the device and deleted in school before the end of the day.
- Staff are not permitted to use their own mobile phones or devices for contacting children, young people or their families within or outside of the setting in a professional capacity.
- Staff will be issued with a school phone where contact with students, parents or carers is required.
- Mobile Phones and personally-owned devices will be switched off or switched to 'silent' mode. Bluetooth communication should be 'hidden' or switched off and mobile phones or personally-owned devices will not be used during teaching periods unless permission has been granted by a member of the senior leadership team in emergency circumstances.
- If members of staff have an educational reason to allow children to use mobile phones or a personally-owned device as part of an educational activity, then it will only take place when approved by the senior leadership team.
- Staff should not use personally-owned devices, such as mobile phones or cameras, to take photos or videos of students and will only use work-provided equipment for this purpose.
- If a member of staff breaches the school policy, then disciplinary action may be taken.
- Where staff members are required to use a mobile phone for school duties, for instance in case of emergency during off-site activities, they should use their own device and hide (by inputting 141) their own mobile number for confidentiality purposes.

Digital images and video in this school:

- We gain parental / carer permission for use of digital photographs or video involving their child as part of the school agreement form when their daughter / son joins the school;
- We do not identify pupils in online photographic materials or include the full names of pupils in the credits of any published school produced video materials / DVDs;
- Staff sign the school's Acceptable Use Policy and this includes a clause on the use of mobile phones / personal equipment for taking pictures of pupils;
- If specific pupil photos (not group photos) are used on the school web site, in the prospectus or in other high profile publications the school will obtain individual parental or pupil permission for its long term use
- The school blocks/filter access to social networking sites or newsgroups unless there is a specific approved educational purpose;
- Pupils are taught about how images can be manipulated in their e-safety education programme and also taught to consider how to publish for a wide range of audiences

St Marys Catholic Primary School

'Learning together in Faith and Love'

which might include governors, parents or younger children as part of their ICT scheme of work;

- Pupils are advised to be very careful about placing any personal photos on any 'social' online network space. They are taught to understand the need to maintain privacy settings so as not to make public, personal information.
- Pupils are taught that they should not post images or videos of others without their permission. We teach them about the risks associated with providing information with images (including the name of the file), that reveals the identify of others and their location, such as house number, street name or school. We teach them about the need to keep their data secure and what to do if they are subject to bullying or abuse.

Asset disposal

- Details of all school-owned hardware will be recorded in a hardware inventory.
- Details of all school-owned software will be recorded in a software inventory.
- All redundant equipment will be disposed of through an authorised agency. This will include a written receipt for the item including an acceptance of responsibility for the destruction of any personal data.
- All redundant equipment that may have held personal data will have the storage media forensically wiped. Alternatively, if the storage media has failed, it will be physically destroyed. The school will only use authorised companies who will supply a written guarantee that this will happen
- Disposal of any equipment will conform to [The Waste Electrical and Electronic Equipment Regulations 2006](#) and/or [The Waste Electrical and Electronic Equipment \(Amendment\) Regulations 2007](#). Further information can be found on the Environment Agency website.

7. Filtering and Monitoring

Maintaining the security of the school ICT network

We are aware that connection to the internet significantly increases the risk that a computer or a computer network may be infected by a virus or accessed by unauthorized persons. The LA through the SLA will up-date virus protection regularly.

All staff should be clear on:

- All staff have responsibility to be vigilant and support children in accessing and using the internet.
- All staff must be aware that they need to report safeguarding and technical concerns, such as if:
 - They witness or suspect unsuitable material has been accessed
 - They are able to access unsuitable material
 - They are teaching topics that could create unusual activity on the filtering logs
 - There is failure in the software or abuse of the system

St Marys Catholic Primary School

'Learning together in Faith and Love'

- There are perceived unreasonable restrictions that affect teaching and learning or administrative tasks
- They notice abbreviations or misspellings that allow access to restricted material

Senior leaders and all relevant staff need to be aware of and understand:

- What provisions your school has in place and how to manage these provisions effectively
- How to escalate concerns when they identify them
- They're also responsible for:
 - Buying-in the filtering and monitoring system your school uses
 - Documenting what is blocked or allowed, and why
 - Reviewing the effectiveness of your provision, making sure that incidents are urgently picked up, acted on and outcomes are recorded
- Overseeing reports
- Making sure staff are trained appropriately and understand their role

The DSL and DDSs have a lead responsibility for online safety, including understanding the filtering and monitoring systems and processes in place - this is part of their role in taking the lead responsibility for safeguarding.

This includes overseeing and acting on:

- Filtering and monitoring reports
- Safeguarding concerns
- Checks to filtering and monitoring systems

School website address: www.st-marys.rbkc.sch.uk

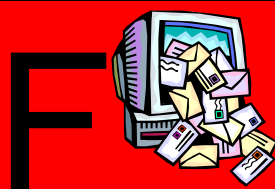
Think before you click



**I will only use the Internet
and email with an adult**



**I will only click on icons and
links when I know they are
safe**



***I will only send friendly and
polite messages***



***If I see something I don't
like on a screen, I will
always tell an adult***

My Name:

My Signature:

KS2 Pupil Acceptable User Agreement

These rules will keep me safe and help me to be fair to others.

- I will only use the school's computers for schoolwork and homework.
- I will only edit or delete my own files and not look at, or change, other people's files without their permission.
- I will keep my logins and passwords secret.
- I will not bring files into school without permission or upload inappropriate material to my workspace.
- I am aware that some websites and social networks have age restrictions and I should respect this.
- I will not attempt to visit Internet sites that I know to be banned by the school.
- I will only e-mail people I know, or a responsible adult has approved. • The messages I send, or information I upload, will always be polite and sensible.
- I will not open an attachment, or download a file, unless I know and trust the person who has sent it.
- I will not give my home address, phone number, send a photograph or video, or give any other personal information that could be used to identify me, my family or my friends, unless a trusted adult has given permission. I will never arrange to meet someone I have only ever previously met on the Internet, unless my parent/carers has given me permission and I take a responsible adult with me.
- If I see anything I am unhappy with or I receive a message I do not like, I will not respond to it but I will show a teacher / responsible adult.

St Marys Catholic Primary School

'Learning together in Faith and Love'

I have read and understand these rules and agree to them.

Signed:

Date

St Mary's Catholic Primary School E-Safety agreement for Parents

Internet and Computing: As the parent or legal guardian of the pupil(s) named below, I grant permission for the school to give my *daughter / son* access to:

- the Internet at school
- the school's chosen email system
- IT facilities and equipment at the school.

I accept that ultimately the school cannot be held responsible for the nature and content of materials accessed through the Internet and mobile technologies, but I understand that the school takes every reasonable precaution to keep pupils safe and to prevent pupils from accessing inappropriate materials.

I understand that the school can, if necessary, check my child's computer files and the internet sites they visit at school and if there are concerns about my child's safety or e-behaviour they will contact me.

Use of digital images, photography and video: I understand the school has a clear policy on "The use of digital images and video" and I support this.

I will not take and then share online, photographs of other children (or staff) at school events without permission.

Social networking and media sites; I understand that the school has a clear policy on "The use of social networking and media sites" and I support this.

St Marys Catholic Primary School

'Learning together in Faith and Love'

I understand that the school takes any inappropriate behaviour seriously and will respond to observed or reported inappropriate or unsafe behaviour.

I will support the school by promoting safe use of the Internet and digital technology at home. I will inform the school if I have any concerns.

My daughter / son name(s): _____

Parent / guardian signature: _____

Date: ____/____/____

This Policy has been approved by the Full Governing Body in the Autumn Term 2024 and will be reviewed in the Autumn Term 2026.

Signed:

Headteacher:

Chair of Governors: