



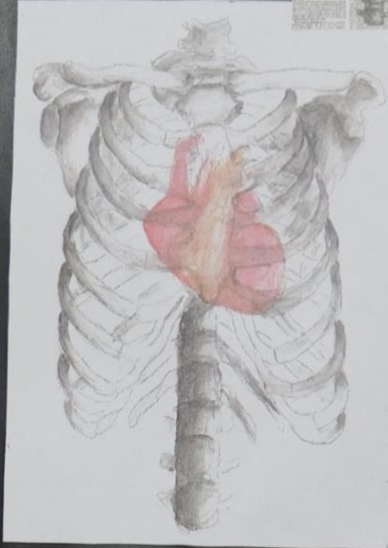
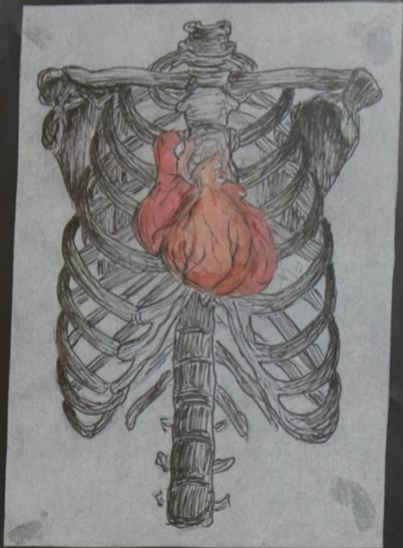
Another impact addiction had on Amy was premature aging and extreme weight loss, highlighted by how her face became hollow, and her skin looked aged. For the first piece I did to highlight this, I used normal shading pencils. After I did this, I decided to use a black pencil in areas that needed more ~~and~~ depth. I think this piece could have been better with better shading, but overall I thought it turned out well. For the second piece I used biro and hairspray to recreate the image. I think this piece could have been better, but I added too much hairspray, which made the shading and the colour weaker. For the last design, I used fineliner and mark making to create the shading. I think this worked well as it made the shading look harsher and shows how prominent ~~the~~ Amy's features became as a result of weight loss.

The first piece I did was the owl in coloured pencil. I shaded some of the owl but I found it quite hard, therefore, I don't like using this technique. For the first eye I did I used different shades of green, yellow and blue watercolour paint. I like this technique as it gives a watery effect and I added lots of water so it would run. For the second eye I used ink and with a brush I splatted the ink around the eye. For the centre of the eye I used water colour paint. I liked using the ink as it was quite easy to use and I like how the colours mixed. Finally, for the last eye, I used brusho. And for the centre of the eye I used ink. Then I outlined all the eyes with a sharpie pen. My favourite piece is the green eye as I like the watery effect and how the watercolour blended. To improve I could have used more media and added texture to the drawings.

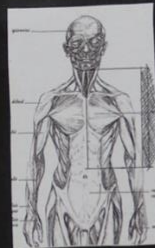




Development

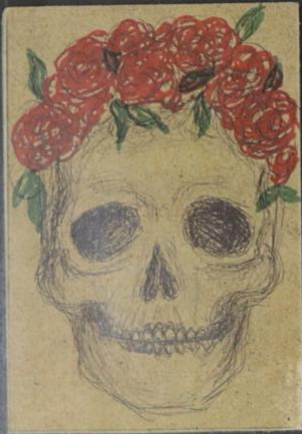


I made these pieces using tissue and acrylic paint I like how both pieces have detail in them



I made these pieces using pen and graphite I like how intricate and detailed the pieces are





I created this piece using Sharpie and biro on MDF wood. I like how the mediums look on the material and I think it makes the piece original.

I created these pieces using Sharpie on acetate, water colour, and news paper. I think printing my image onto acetate was an interesting way to execute the design. I like how the colourful flowers contrast with the brain.



I created this piece by combining half of a lion with half of its skull. I completed the study using fine liner. I think the shading is executed well.



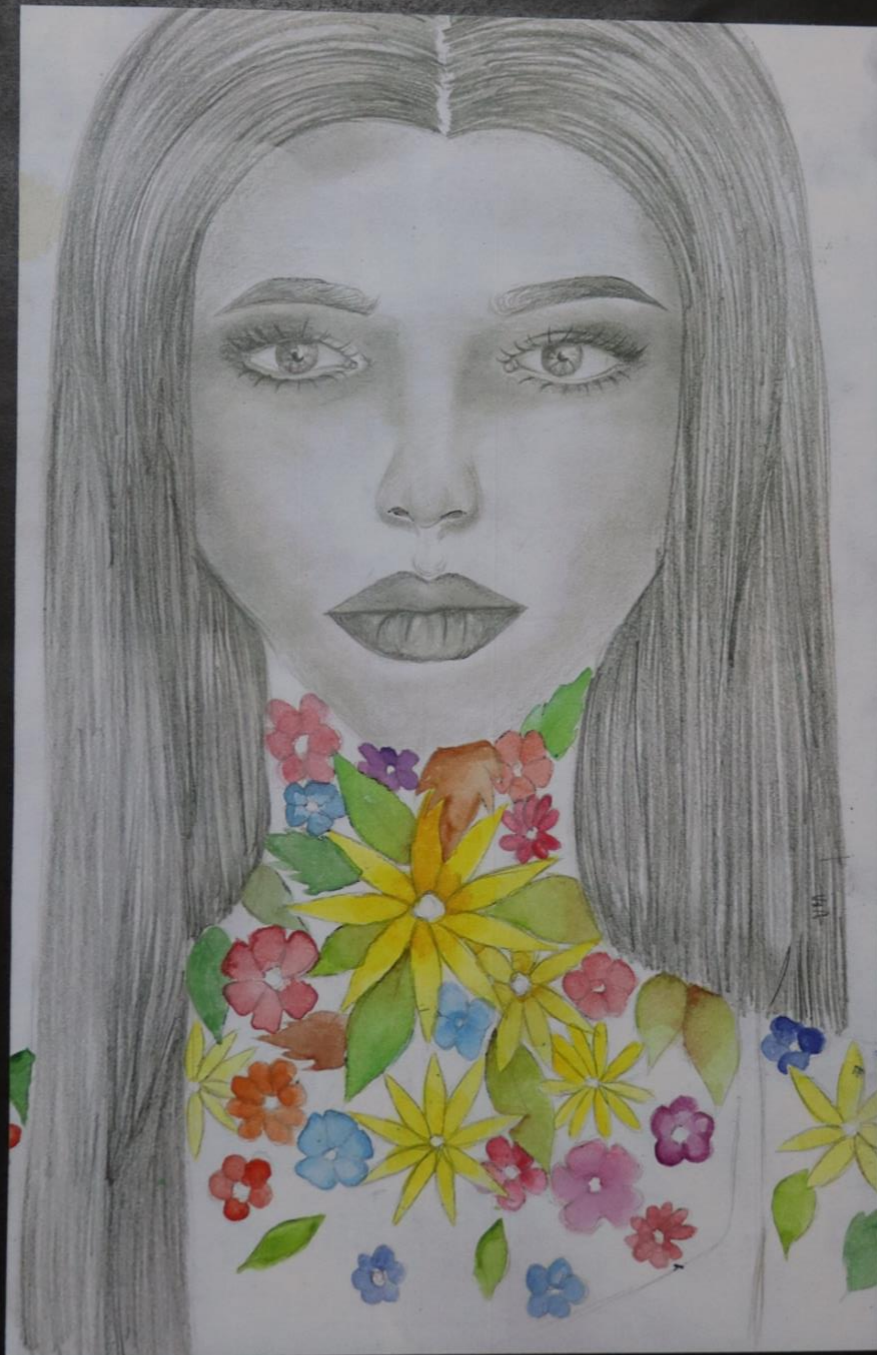
I created these pieces using coloured pencil and acrylic. My favourite is the coloured pencil study as I think it offers a greater attention to detail and more in depth shading.





For the outside piece, I used a graphite pencil and watercolour. I ~~the~~ used watercolour as I think it was effective in my first idea but used graphite to allow myself to create more intricate details thus making the design better.

However, I eventually decided to use my third design idea ~~for~~ as my final design as I found the placement and composition of the flowers more interesting than the other designs as they were incorporated into the figure itself. I also think that the details on the flowers was better as I used coloured pencil.



for the outside piece, I use a graphite pencil and watercolour. I ~~the~~ used watercolour as I think it was effective in my first idea, but used graphite to allow myself to create more intricate details thus making the design better.

However, I eventually decided to use my third design idea for as my final design as I found the placement and composition of the flowers more interesting than the other designs as they were incorporated into the figure itself. I also think that the detail on the flowers was better as I used coloured pencil.



WHADDYA MEAN
THE MILKSHAKE
MACHINE IS
BROKEN?!



* Blind ^{is} dramatically
Lulu at something*

