



# School Newsletter

With Christ we live, we love, we learn and we grow

05.12.25

Dear parents and carers,

## PTFA CHRISTMAS FAIR

Many thanks for your generosity and for all your donations of gifts of bottles, chocolates and toys over the last few weeks; it is greatly appreciated. Many thanks to the PTFA, all the parents, staff and volunteers who helped put together the Christmas Fair this year and for giving your time and energy to make sure it is going to be a success.

I hope everybody has an enjoyable evening and I hope the children will enjoy meeting Father Christmas in his superb grotto.



**Christmas Performance Times:** EYFS (Nursery, Reception), KS1 (Y1, Y2) and KS2 (Y3, 4, 5 and 6)

Tuesday 9<sup>th</sup> December:

- 0930 KS1 (Y1 and Y2) performance for parents
- 1430 EYFS Nursery/ Reception performance for parents.
- 1800 KS1 (Y1 and Y2) performance for parents

Wednesday 10<sup>th</sup> December:

- 0930 EYFS Nursery/ Reception performance for parents.

Monday 15<sup>th</sup> December

- 1800 Junior Carol Concert at St Mary's Church



## Infant Nativities

Children and staff have been rehearsing tirelessly over the last few days in readiness for their Nativity performances in the next week or so. I've managed to catch one or two of the practice sessions and the children are fantastic.

The reception and nursery classes will be performing *A Twinkling Nativity*.

Y1 and Y2 are also looking forward to treating their mums, dads and carers to a performance of *A Fireside Nativity*.

*All tickets are now allocated with seat numbers and a seating plan has been shared. Please ensure on the evening that you do sit in the correct seats, should you mislay the tickets, the office has a list of what tickets have been allocated to each child.*

### **KS2 Christmas Performance**



The juniors are also in the middle of rehearsing for their Christmas concert at Church on **Monday 15<sup>th</sup> December at 6pm.**

They will be visiting church on two occasions over the next couple of weeks to practise. On **Monday 8<sup>th</sup> December**, they will attend Mass to celebrate the beginning of Advent and the Feast of the Immaculate Conception. They can be dropped off from 0845. Children who attend Breakfast Club walk up to Church as usual accompanied by members of staff.

Please could I also ask parents and to drop off the children from Y3-6 again at Church on **Monday 15<sup>th</sup> December** from 0845.

### **Ukraine Shoebox appeal**

We would like to support *International Aid Trust's Shoebox Appeal* in support of Ukraine. We know we have been asking for help in a number of different appeals but if you are able to help that would be great. We would like to collect and deliver the shoeboxes by Tuesday 16<sup>th</sup> December.

This is from the International Aid Trust website:

'So, who will you send a smile to? Ready to get started? Here's what you need to do to prepare your shoebox:

Gift wrap the box and lid separately so the lid can be lifted off, please don't wrap individual items, use an elastic band to keep the box together.

Choose the age and gender of the person you want to receive your shoebox and fill the box with suitable items. Shoeboxes are sent to all ages from babies to elderly people.

Label the box with who it is for e.g: Girl aged 3- 5 years, Boy aged 9-11 years, Adult Female aged 60+ years. You can write your own label or print our shoebox leaflet and use the label included.

Ideas for what to include:

#### **Stationery / school supplies:**

Pens, pencils, crayons, eraser, sharpener, notebooks, colouring books, maths set, if sending scissors to children, please ensure they are round ended safety type.

#### **Toiletries:**

Toothbrush, toothpaste, soap, flannel or sponge, comb, hair bobbles, roll on deodorant, No sprays, medicines, vitamins, tablets.

#### **Toys:**

Small toys, cuddly toys, balls, skipping rope, games, small jigsaws etc. No guns or war toys.

**Clothes:**

Socks, T-shirts, hats, scarves, gloves, underwear, Babygro for little ones.

**Practical Items:**

Plastic bowl, cup, cutlery.

For teens and adults: a small sewing kit, string, safety pins, a wind up torch or plasters. No matches.

**Greetings:**

You could send a card with a cheerful picture or encouraging message, please don't include your personal contact details.

**Sweets:**

Please make sure sweets have a long use-by date, no chocolates.'

THANK YOU

**CHRISTMAS 2025 MASS TIMES - ST MARY'S RC CHURCH CHORLEY**

24<sup>TH</sup> WED 16.30    CHRISTMAS EVE – carols 16.00  
25<sup>TH</sup> THURS 09.30    CHRISTMAS DAY

*Happy and blessed Christmas and a healthy  
and safe New Year 2026. God bless. Fr  
Marsden and Parishioners*

**Term Dates for 2026-2027 and 2027-2028**

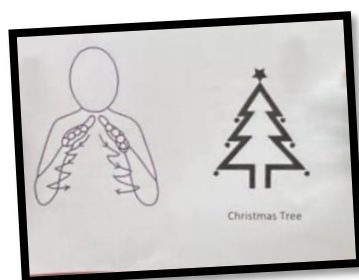
These were shared separately recently and are available to view on the school website.

**Child Protection and Safeguarding Policy**

We review and update the Child Protection and Safeguarding Policy and the Anti-Bullying policies each year and they are always available on the school website. I have also attached them here for you to view.

**Sign Language - Sign of the Week**

This week's sign is 'Christmas Tree.' Ask your child to demonstrate it to you!

**Health and Safety****Play equipment**

Please do not let your children use the play equipment at the start and end of the school day; we don't want any injuries – thank you

## **Lancashire Fire and Rescue Charity Fun Run at Chorley Fire Station Sunday 14 December**

We have been asked to publicise the Lancashire Fire and Rescue Charity Fun Run at Chorley Fire Station on Sunday 14 December. Please see the leaflet attached.

- 1000 1km children's (up to 14yo) race
- 1100 5km adult race

## **Primary School Admissions September 2026**

If your child is in their last year of pre-school/nursery you can now apply for their primary school place at: <https://www.lancashire.gov.uk/children-education-families/schools/apply-for-a-school-place/starting-primary-school/> for a September 2025 start.

It is quick and easy to do and you will receive email confirmation of your application.

**VERY IMPORTANT: You must apply even if you already have siblings in a school.** If you live in Lancashire you can include out of area preferences on your online application.

School places are not allocated on a first-come, first-served basis. All applications received up to the closing date are given equal priority, but if you miss the deadline, a late application may reduce your chance of getting your preference of school. The national closing date for primary applications is **15 January 2026**. Between now and 15<sup>th</sup> January all applications are processed and all preferences are considered against the school's published admissions policy for school year 2026 - 2027.

<https://www.chorleystmarys.lancs.sch.uk/our-school/admissions>

**\*\*Please remember that admissions to St Mary's, or any Catholic primary schools, also require the completion of the separate supplementary information form (SIF) - available at <https://www.chorleystmarys.lancs.sch.uk/our-school/admissions> \*\***

## **Foodbank**

Following on from the fabulous support shown for our Harvest Service, we are reinstating the drop-off box in the main entrance for donations for the **Living Waters - Storehouse** food bank. You can use this for further donations of tinned/packed goods or other items such as toiletries (shampoos/bubble bath) or even gift sets as the Christmas season approaches. Thank you.

## **ParentPay**

ParentPay - please ensure accounts are up to date for end of term. Thank you.

## **Tax-free childcare**

One of our governors shared some information with me a couple of years ago to pass on to parents and carers - here is a reminder, in case your circumstances have changed.:

You can get up to £500 every 3 months (up to £2,000 a year) for each of your children to help with the costs of childcare. This goes up to £1,000 every 3 months if a child is disabled (up to £4,000 a

year). For every £8 you pay into this account, the government will pay in £2 to use to pay your provider.

You can get Tax-Free Childcare at the same time as 30 hours free childcare if you're eligible for both. You can use Tax-Free Childcare for: childminders, nurseries and nannies and after school clubs and play schemes. <https://www.gov.uk/tax-free-childcare>

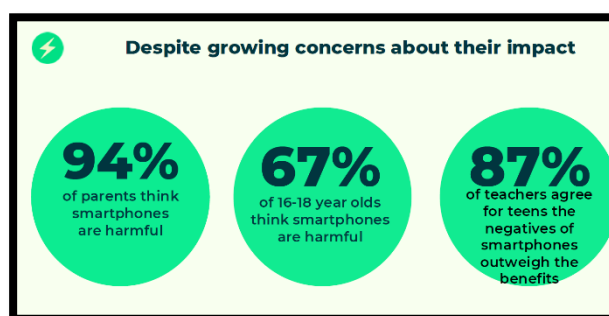
### Christmas Theatre Trip Details

Keep your eye out for details of this year's theatre visits at Christmas, which have been sent out separately.

### Smartphone Free Childhood



### Fact of the Week



I think that everyone who attended the **Smartphone Free Childhood** meeting last week in school found it a really good get-together. There was lots of useful and informative discussion. Thanks to the parents and carers who came along and thanks to Mrs Clarke and Mrs Nightingale for leading it.

Among the many interesting areas covered was our Y5 class. Maybe with the approach of Christmas in mind, a Y5 parent had asked a question on the parents class **WhatsApp** along the lines of:

*'Can you tell me if your child has a smartphone because my child says that everyone else in class has got one?'*

One-by-one, the responses came back to say, *'No, they do not.'* I think in the end there may have been one or two replies, which indicated the children did have a phone, but the overwhelming majority said they did not.

Not long afterwards, a child in the Y5 class asked their dad for a smartphone for Christmas – saying that everyone else in class had one - the dad was only too happy to show his child the Y5 parents WhatsApp responses which categorically proved that they do not! The child was more than satisfied with the evidence.

Next Steps – You will notice around school a QR code inviting parents and carers to the St Mary's Smartphone Free childhood Whatsapp group. Here is the link again:



**You're not alone in wanting to create a childhood free from smartphones and social media.**

**Join the St mary's Smartphone Free Childhood WhatsApp community for tips and support because screens can wait - childhood cannot!**

<https://www.smartphonefreechildhood.org/>

*Smartphone Free Childhood – 'We're united for childhood - Join the growing movement of families who believe childhood's too short to scroll away.'*

#### **Message from Chorley St Mary's Beavers, Cubs and Scouts groups**

Chorley St. Mary's currently have spaces in their Beaver and Cub sections, and some availability in the Scout section. We meet at the Scout Hut on Hodder Avenue, PR7 3PB on Friday evenings during term time. Beavers and Cubs meet from 5 30 to 6 45pm, and Scouts from 7 till 8 30pm. We have a wide and varied programme and have a lot of fun in our Scouting activities. Please email [jacqueline.malone@chorleyscouts.org.uk](mailto:jacqueline.malone@chorleyscouts.org.uk) for more information.

#### **Message from the school office**

Christmas Trip payments - a reminder to pay for the Lowry Theatre trips by 16<sup>th</sup> December. Thank you!

#### **STAR OF THE WEEK w/e 05.12.25**

<b>Class</b>		<b>Name</b>	<b>Star of the week for... &amp; Value of the week of PEACE</b>
Nursery	s	Aria	Always being willing to help her teachers in class
	v	Poppy - sacrifice	Retelling the story of Mary's visit from Angel Gabriel in lovely detail
	Dojo	Aria	
R	s	Luca	For hearing initial sounds in words and trying hard all week

	v	Noah	For always joining in collective worship and making the sign of the cross
	Dojo	Corey	
Y1	s	Oscar	Lovely independent writing in English this week.
	v	Darcey	Helping others on her table.
	Dojo	George B Colette	
Y2	s	Maddy C	For working so hard during all lessons to produce his best work.
	v	Joshua N	For sacrificing her time to help tidy the classroom without being asked.
	Dojo	Eleanor and Brody	
Y3	s	Noah C	Consistent hard work in all subjects all week!
	v	Theo H	Always ready to be at service when required
Y4	s	Zendaya	Great diary of a citizen from Hamlin
	v	Josh Airey	Has a peaceful way of dealing with conflict
Y5	s	Mickey	brilliant persuasive writing
	v	George H	finding peace in difficult situations
Y6	s	Lucy A	For her wonderful writing in role as Dorathy, using devices to build cohesion and informal language.
	v	James E	For always offering her services to others by helping them.

## Attendance



### Chorley, St Mary's Attendance League 2025/2026 w/e 05.12.25



CURRENT POSITION	CLASS	CURRENT %
1st	YEAR 4	98.05
2nd	RECEPTION	97.62
3rd	YEAR 2	97.58
4th	YEAR 3	97.37
5th	YEAR 1	97.12
6th	YEAR 5	95.99
7th	YEAR 6	93.07

Unfortunately no 100% attendance this week!

#### How does our attendance compare against other schools?

Attendance measure ▲	Percentage	Ranking ①
Overall attendance	96.7%	You are ranked 123rd out of 479 schools
Overall absence	3.3%	You are ranked 123rd out of 479 schools
Authorised absence	2.9%	You are ranked 190th out of 479 schools
Unauthorised absence	0.4%	You are ranked 57th out of 479 schools
Persistently absent	10.2%	You are ranked 200th out of 479 schools
Severely absent	0.0%	You are ranked 1st out of 479 schools

The illness that we have suffered in Y6 over the last few weeks has sent us plummeting down the attendance tables. I am sure we can climb our way back up in the New Year and get back into the top 10.

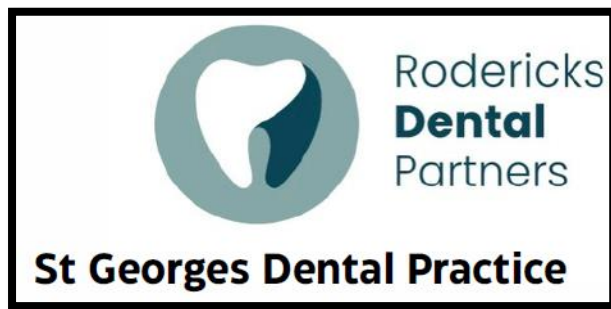
### Free School Meals – Are you missing out?

Find out if you are eligible and find out how to apply – follow this link.

<https://www.lancashire.gov.uk/children-education-families/schools/free-school-meals/?page=2>



## NHS Dentist for Children



We have been contacted by the NHS to publicise NHS dentistry for children. Please see attached leaflet.

Best wishes,

Patrick Smyth  
Headteacher  
**05.12.25**

## Message from SVP Chorley Buddies



# SVP Chorley Buddies

*We're Helping*

**01257 542 367**

Supported by  
**Chorley Council**

Activity Classes	Good Food Clubs	Community Café	Craft Club	Children's Activities
				

 Part of the SVP Nationally



Part of the SVP Nationally



**SVP Chorley Buddies**  
*We're Helping*

**01257 542 367**



**St Vincent  
de Paul Society**  
England and Wales  
Turning Concern into Action

Monday	Tuesday	Wednesday	Thursday	Friday
<b>Seated Yoga</b> Adlington Library 9:30-10:30am. <b>FREE to all.</b>	<b>St Joseph's Good Food Club</b> St Joseph's Parish Centre, Harpers Lane, Chorley 10:30-11:15am, followed by refreshments. <b>£5 to shop and donations for refreshments.</b>	<b>Coppull Good Food Club</b> St John the Divine Parish Hall, Coppull 10:30-11:15am, followed by refreshments. <b>£5 to shop and donations for refreshments.</b>	<b>Buttermere Good Food Club</b> Buttermere Community Centre, Chorley 10:30-11:15am, followed by refreshments. <b>£5 to shop and donations for refreshments.</b>	<b>Clayton Brook Good Food Club</b> Clayton Brook Village Hall, Clayton-le-Woods 10:30-11:15am. <b>£5 to shop and refreshments available in the Café.</b>
<b>Knit and Natter</b> Primrose Gardens, Chorley 10am-12pm. <b>Donations welcome.</b>	<b>Seated Yoga</b> Adlington Library 11am-12pm. <b>FREE to all.</b>	<b>Gardening Club</b> Buttermere Community Centre, Chorley 11:00am-12:00pm. <b>FREE to all.</b>	<b>Seated Exercise</b> Ravensthorpe Independent Living Accommodation, Astley Village 10:30am-11:30pm. <b>£3 suggested donation.</b>	<b>Aquarobics</b> All Seasons Leisure Centre, Chorley 3-4pm. Term time only. <b>£5 suggested donation.</b>
<b>Kids Arts and Crafts</b> Coppull Library 3:30-4:30pm. Term time only.	<b>Chair Fit</b> Euxton Community Centre, 11:15am-12:15pm. <b>£3 suggested donation.</b>	<b>Lunch Social</b> 2nd Wednesday of the month St Chad's Parish Centre from 12-2pm <b>BOOKING ESSENTIAL</b> Donations welcome.		
	<b>Lunch Social</b> 4th Tuesday of the month Buttermere Community Centre, Chorley from 12-2pm. <b>BOOKING ESSENTIAL</b> Donations welcome.	<b>Buddies Café</b> Buttermere Community Centre, Chorley 9am-3pm Affordable café with crafts running from 12:30-2pm <b>Everyone welcome</b>		
	<b>Seated Exercise</b> All Seasons Leisure Centre, Chorley 3-4pm. <b>£5 suggested donation.</b>	<b>Chair Fit</b> Croston Old School, Church Street, Croston 1:30-2:30pm. <b>£3 suggested donation.</b>		



**SCAN TO DONATE**