



School Newsletter

With Christ we live, we love, we learn and we grow

12.12.25

Dear parents and carers,

Junior Christmas Concert Monday 15th December at 6.00pm



The children in the juniors (Y3 to Y6) will be performing their Christmas concert and tableau in Church on the evening of **Monday 16th December at 6.00pm**.

Prior to that, they will have one final practice at Church **on Monday morning**. Please could you drop the children off from 0845 at Church. They will walk back to school after the practice, which will finish just after 11am. Staff members will walk up to Church with the children who are attending breakfast club.

On Monday evening, we would like all the children to meet in the Church. We would ask children to arrive no earlier than **5.45pm** and no later than **5.55pm**. We would like the Y4s to arrive wearing their costumes to save time on getting changed in Church and to allow for a prompt start at 6pm.

Parents/ carers can come into Church with their children when they arrive; they do not need to wait outside.

Children must wear full uniform and look smart please - and please leave coats and other belongings with parents and carers – thank you!

The performance will start at 6.00pm and will last between 40 minutes and an hour at the most. There will be a collection at the end for: St Catherine's Hospice, Derian House and Meningitis Now and to contribute towards the Church's heating costs for the evening. Father Marsden estimates the cost of heating the Church is about £10 an hour and to get it warmed up for 6pm, the heating has to be switched on at 1pm!

Father Marsden asks that whilst you are waiting in church for the concert to begin, that noise/conversations be kept down to a minimum in respect of the location and for any members of the congregation who may be in church to say prayers.

Infant Christmas Performances:

Well done to all the children in the nursery and the infant classes for their wonderful Nativity performances during this week.

The **Nursery** and **Reception** children were fantastic in their acting, singing and in remembering their lines for their Nativity performance of ***Twinkly Nativity***. It was a brilliant performance and made parents, carers and school staff, alike, very proud. Well done!



Well done to **Year 1 and Year 2** for their Nativity, ***A Fireside Nativity***. The two classes combined extremely well to tell the story of the birth of Jesus two thousand years ago. They spoke very clearly, sang beautifully and acted their parts very well.

As I said at the end of all the performances, these productions serve as one of the ways in which the children learn the story of the first coming of Christ and they help them prepare for Christmas Day which is now only a few days away.

Thank you to all the staff and volunteers for their hard work in preparing the children so well and for their work on the set design this year. Thank you, parents and carers, for supporting all our performances in great number and for contributing to our collections. We will provide a final collection total next week.

Christmas Fair



Thank you all for your terrific support of the Christmas Fair, last week. A wonderful amount was raised; we will give you full details next week. Thank you very much!

And a big thank you to all the helpers on the night – it is very much appreciated. And, another big thank you to Mrs Root and the PTFA team for your time and effort to bring about the event and making it run so smoothly.

Theatre Visits

Next Wednesday morning, our nursery, reception, Y1, Y2 and Y3 classes are going to the Lowry Theatre in Salford to watch a production of Roald Dahl's *The Enormous Crocodile*. They will also get to experience the 360 immersive experience of Lowry's *Going to the Match* painting of Bolton Wanderers fans making their way to the old Burnden Park. <https://thelowry.com/lowry-360-5htn> and a chance to enjoy some of Lowry's art work which is currently on display.

On Thursday afternoon, it will be the turn of the Y4, Y5 and Y6 classes, who will be going to the Lowry Theatre to watch a production of the C.S. Lewis's *The Lion, the Witch and the Wardrobe*. This is based on the novel they all study when they are in Y5, so it will be great opportunity for them to see how it is adapted for the stage. They will also get to enjoy the 360 experience and explore Lowry's artwork.

Thank you to all the volunteers who are coming along on the both visits – it is greatly appreciated and thank you Mrs Nicklin for putting the visits together.

Christmas Party and Christmas Lunch Days next week – information has been sent out separately about these.

Thursday, 18th December - Christmas party day

Christmas Party Day on Thursday for all children. A reminder that Years 4, 5 and 6, children need to wear their full school uniform and bring a packed lunch (school will provide this if your child usually has a school dinner) because they will be visiting the theatre in the afternoon.

Friday 19th December - Christmas lunch day.

Children can come in their Christmas outfits. Please remember sensible shoes and coats as they will still be outdoors at break and lunch times. If children have a packed lunch on that day they will still need to bring it.

Lancashire Teaching Hospitals Charity Christmas Collection

Thank you so much for your generous donations to this charity. The items will be collected on Monday afternoon.

Ukraine Shoebox appeal

We would like to support *International Aid Trust's Shoebox Appeal* in support of Ukraine. We know we have been asking for help in a number of different appeals but if you are able to help that would be great. We would like to collect and deliver the shoeboxes by **Tuesday 16th December**.

This is from the International Aid Trust website:

‘So, who will you send a smile to? Ready to get started? Here’s what you need to do to prepare your shoebox:

Gift wrap the box and lid separately so the lid can be lifted off, please don’t wrap individual items, use an elastic band to keep the box together.

Choose the age and gender of the person you want to receive your shoebox and fill the box with suitable items. Shoeboxes are sent to all ages from babies to elderly people.

Label the box with who it is for e.g: Girl aged 3- 5 years, Boy aged 9-11 years, Adult Female aged 60+ years. You can write your own label or print our shoebox leaflet and use the label included.

Ideas for what to include:

Stationery / school supplies:

Pens, pencils, crayons, eraser, sharpener, notebooks, colouring books, maths set, if sending scissors to children, please ensure they are round ended safety type.

Toiletries:

Toothbrush, toothpaste, soap, flannel or sponge, comb, hair bobbles, roll on deodorant, No sprays, medicines, vitamins, tablets.

Toys:

Small toys, cuddly toys, balls, skipping rope, games, small jigsaws etc. No guns or war toys.

Clothes:

Socks, T-shirts, hats, scarves, gloves, underwear, Babygro for little ones.

Practical Items:

Plastic bowl, cup, cutlery.

For teens and adults: a small sewing kit, string, safety pins, a wind up torch or plasters. No matches.

Greetings:

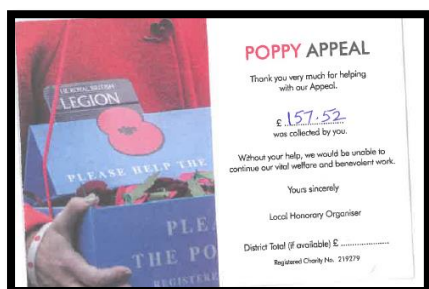
You could send a card with a cheerful picture or encouraging message, please don't include your personal contact details.

Sweets:

Please make sure sweets have a long use-by date, no chocolates.'

THANK YOU

RBL – Poppy Appeal 2025



Thank you parents, carers and children for your kind donations to this year's RBL Poppy Appeal – together we raised £157.52

Thank you.

CHRISTMAS 2025 MASS TIMES - ST MARY'S RC CHURCH CHORLEY

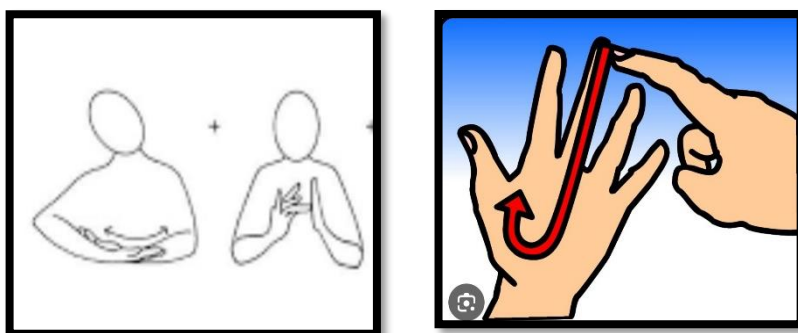
24TH WED 16.30 CHRISTMAS EVE – carols 16.00
25TH THURS 09.30 CHRISTMAS DAY

Happy and blessed Christmas and a healthy and safe New Year 2026. God bless. Fr Marsden and Parishioners



Sign Language - Sign of the Week

This week's sign is 'Baby Jesus.' Ask your child to demonstrate it to you!



Health and Safety

Play equipment

Please do not let your children use the play equipment at the start and end of the school day; we don't want any injuries – thank you

Lancashire Fire and Rescue Charity Fun Run at Chorley Fire Station Sunday 14 December

We have been asked to publicise the Lancashire Fire and Rescue Charity Fun Run at Chorley Fire Station on Sunday 14 December. Please see the leaflet attached.

- 1000 1km children's (up to 14yo) race
- 1100 5km adult race

Primary School Admissions September 2026

If your child is in their last year of pre-school/nursery you can now apply for their primary school place at: <https://www.lancashire.gov.uk/children-education-families/schools/apply-for-a-school-place/starting-primary-school/> for a September 2025 start.

It is quick and easy to do and you will receive email confirmation of your application.

VERY IMPORTANT: You must apply even if you already have siblings in a school. If you live in Lancashire you can include out of area preferences on your online application.

School places are not allocated on a first-come, first-served basis. All applications received up to the closing date are given equal priority, but if you miss the deadline, a late application may reduce your chance of getting your preference of school. The national closing date for primary applications is **15 January 2026**. Between now and 15th January all applications are processed and all preferences are considered against the school's published admissions policy for school year 2026 - 2027.

<https://www.chorleystmarys.lancs.sch.uk/our-school/admissions>

****Please remember that admissions to St Mary's, or any Catholic primary schools, also require the completion of the separate supplementary information form (SIF) - available at <https://www.chorleystmarys.lancs.sch.uk/our-school/admissions> ****

Foodbank

Following on from the fabulous support shown for our Harvest Service, we are reinstating the drop-off box in the main entrance for donations for the **Living Waters - Storehouse** food bank. You can use this for further donations of tinned/packed goods or other items such as toiletries (shampoos/bubble bath) or even gift sets as the Christmas season approaches. Thank you.

ParentPay

ParentPay - please ensure accounts are up to date for end of term. Thank you.

Tax-free childcare

One of our governors shared some information with me a couple of years ago to pass on to parents and carers - here is a reminder, in case your circumstances have changed.:

You can get up to £500 every 3 months (up to £2,000 a year) for each of your children to help with the costs of childcare. This goes up to £1,000 every 3 months if a child is disabled (up to £4,000 a year). For every £8 you pay into this account, the government will pay in £2 to use to pay your provider.

You can get Tax-Free Childcare at the same time as 30 hours free childcare if you're eligible for both. You can use Tax-Free Childcare for: childminders, nurseries and nannies and after school clubs and play schemes. <https://www.gov.uk/tax-free-childcare>

Smartphone Free Childhood



Fact of the Week

FACT OF THE WEEK

Children can accidentally access harmful or age-inappropriate content online.

You will notice around school a QR code inviting parents and carers to the St Mary's Smartphone Free childhood Whatsapp group. Here is the link again:



You're not alone in wanting to create a childhood free from smartphones and social media.

Join the St mary's Smartphone Free Childhood WhatsApp community for tips and support because screens can wait - childhood cannot!

<https://www.smartphonefreechildhood.org/>

Smartphone Free Childhood – 'We're united for childhood - Join the growing movement of families who believe childhood's too short to scroll away.'

Message from Chorley St Mary's Beavers, Cubs and Scouts groups

Chorley St. Mary's currently have spaces in their Beaver and Cub sections, and some availability in the Scout section. We meet at the Scout Hut on Hodder Avenue, PR7 3PB on Friday evenings during term time. Beavers and Cubs meet from 5 30 to 6 45pm, and Scouts from 7 till 8 30pm. We have a wide and varied programme and have a lot of fun in our Scouting activities. Please email jacqueline.malone@chorleyscouts.org.uk for more information.

Message from the school office

Christmas Trip payments - a reminder to pay for the Lowry Theatre trips by 16th December. Thank you!

STAR OF THE WEEK w/e 12.12.25

Class		Name	Star of the week for... & Value of the week of PEACE
Nursery	s	All children	A fantastic nativity performance
	v	Austin	Enthusiastic interest in the class Christingle
	Dojo	Aria T	
R	s	Indie	For stepping in to stay someone else's lines in the Nativity
	v	Charlie	For his wonderful example in displaying peaceful behaviour.
	Dojo	Noah	

Y1	s	The whole class	An amazing effort in the Nativity play.
	v	Anais	A prayerful and holy attitude in our prayer and liturgy.
	Dojo	Tillie	
Y2	s	Ella S	For an amazing introduction to her twisted traditional tale.
	v	Mila	For always working and playing with her friends peacefully.
	Dojo	Joshua N	
Y3	s	Isaac M	For an amazing improvement in his learn its score (+7 better).
	v	Arthur C	Always joins in with class prayer and liturgy with reverence and respect.
Y4	s	Charlie A	using tone and proportion in art
	v	Charlie	Let someone else chose first when picking groups
Y5	s	George	Fabulous singing in the KS2 Nativity.
	v	Ariana	For always creating a peaceful classroom atmosphere
Y6	s	Billy	For his hard work and determination in mathematics during our ratio topic this week and when completing his mathematics assessments.
	v	India	For offering her service to help another child in class and for always helping the adults too.

Attendance



Chorley, St Mary's Attendance League 2025/2026 w/e 12.12.25



CURRENT POSITION	CLASS	CURRENT %
1st	YEAR 4	97.66
2nd	YEAR 2	97.62
3rd	YEAR 3	97.26
4th	RECEPTION	97.25
5th	YEAR 1	97.12
6th	YEAR 5	95.64
7th	YEAR 6	93.31

Unfortunately no 100% attendance this week!

How does our attendance compare against other schools?

Attendance measure ▲	Percentage	Ranking ⓘ
Overall attendance	96.7%	You are ranked 123rd out of 479 schools
Overall absence	3.3%	You are ranked 123rd out of 479 schools
Authorised absence	2.9%	You are ranked 190th out of 479 schools
Unauthorised absence	0.4%	You are ranked 57th out of 479 schools
Persistently absent	10.2%	You are ranked 200th out of 479 schools
Severely absent	0.0%	You are ranked 1st out of 479 schools

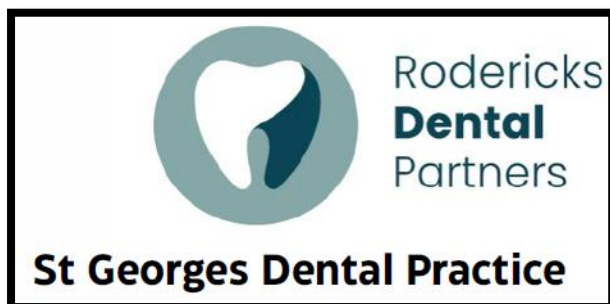
The illness that we have suffered in Y6 over the last few weeks has sent us plummeting down the attendance tables. I am sure we can climb our way back up in the New Year and get back into the top 10.

Free School Meals – Are you missing out?

Find out if you are eligible and find out how to apply – follow this link.

<https://www.lancashire.gov.uk/children-education-families/schools/free-school-meals/?page=2>

NHS Dentist for Children



We have been contacted by the NHS to publicise NHS dentistry for children. Please see attached leaflet.

Best wishes,

Patrick Smyth
Headteacher
12.12.25

**Message from
SVP Chorley
Buddies**



SVP Chorley Buddies

We're Helping

01257 542 367

Supported by


Activity Classes

Good Food Clubs

Community Café

Craft Club

Children's Activities



SVP Chorley Buddies
We're Helping

01257 542 367



**St Vincent
de Paul Society**
England and Wales
Turning Concern into Action

Monday	Tuesday	Wednesday	Thursday	Friday
Seated Yoga Adlington Library 9:30-10:30am. FREE to all.	St Joseph's Good Food Club St Joseph's Parish Centre, Harpers Lane, Chorley 10:30-11:15am, followed by refreshments. £5 to shop and donations for refreshments.	Coppull Good Food Club St John the Divine Parish Hall, Coppull 10:30-11:15am, followed by refreshments. £5 to shop and donations for refreshments.	Buttermere Good Food Club Buttermere Community Centre, Chorley 10:30-11:15am, followed by refreshments. £5 to shop and donations for refreshments.	Clayton Brook Good Food Club Clayton Brook Village Hall, Clayton-le-Woods 10:30-11:15am. £5 to shop and refreshments available in the Café.
Knit and Natter Primrose Gardens, Chorley 10am-12pm. Donations welcome.	Seated Yoga Adlington Library 11am-12pm. FREE to all.	Gardening Club Buttermere Community Centre, Chorley 11:00am-12:00pm. FREE to all.	Seated Exercise Ravensthorpe Independent Living Accommodation, Astley Village 10:30am-11:30pm. £3 suggested donation.	Aquarobics All Seasons Leisure Centre, Chorley 3-4pm. Term time only. £5 suggested donation.
Kids Arts and Crafts Coppull Library 3:30-4:30pm. Term time only.	Chair Fit Euxton Community Centre, 11:15am-12:15pm. £3 suggested donation.	Lunch Social 2nd Wednesday of the month St Chad's Parish Centre from 12-2pm BOOKING ESSENTIAL Donations welcome.		
	Lunch Social 4th Tuesday of the month Buttermere Community Centre, Chorley from 12-2pm. BOOKING ESSENTIAL Donations welcome.	Buddies Café Buttermere Community Centre, Chorley 9am-3pm Affordable café with crafts running from 12:30-2pm Everyone welcome		
	Seated Exercise All Seasons Leisure Centre, Chorley 3-4pm. £5 suggested donation.	Chair Fit Croston Old School, Church Street, Croston 1:30-2:30pm. £3 suggested donation.		



SCAN TO DONATE