



# School Newsletter

With Christ we live, we love, we learn and we grow

27.03.26

**Dear parents and carers,**

We have reached the end of the spring term; we would like to commend the children on their hard work and achievements. They have put in great effort and learned so much. We hope they have enjoyed the last few months. Now, it is time for a well-deserved break.

School will resume on Monday 13th April, as we begin the final term of the school year. For our Year 6 pupils, this will be their last term at St Mary's—a time to cherish and make lasting memories.

On behalf of all the staff and governors at St Mary's, we wish you a joyful and blessed Easter.

## **EASTER AT ST MARY'S CHURCH - THE PASCHAL TRIDUUM AT ST MARY'S:**

2<sup>nd</sup> April: 19.30 The Last Supper Mass

3<sup>rd</sup> April: 15.00 The Passion of Our Lord

4<sup>th</sup> April: 20.00 The Easter Vigil

5<sup>th</sup> April: 09.30 Easter Sunday

## **Good Shepherd Appeal 2026 - A Huge Success!**

Yesterday, we celebrated the end of the Good Shepherd Appeal with our annual *Good Shepherd Talent Show*—a spectacular two-hour showcase of incredible talent! Our performers, who have been eagerly preparing for weeks, took to the stage with a mixture of excitement and nerves, delivering fantastic performances that were thoroughly enjoyed by all. Well done to everyone involved—we hope all our performers had as much fun as the audience did!



A heartfelt thank you to all the children, parents, and staff for your support of this wonderful cause. Thanks to your generosity, we have raised and banked a record-breaking total of **£1,134.79**. That is an incredible effort – well done everyone!

## **Chorley Schools Sports Partnership (CSSP) – Annual School Cross Country Championships**

Last Saturday, in warm and sunny conditions, the St Mary's cross-country team joined hundreds of enthusiastic young runners at Astley Park for the annual CSSP Cross-Country Championships. Our team put in a fantastic effort, delivering impressive individual performances with determination and

smiles throughout the event. We think James in Y3 got a top ten finish in the Y3/4 race – a wonderful effort. Some of our runners even had enough energy left to take part in the *Fun Run* at the end.

A huge well done to the entire team, and a big thank you to our parents for their support. Special thanks to Mrs. Blackwell for her excellent training and to Mr. Hodge for his invaluable help on the day.

Another special thank you goes to the CSSP team, some of whom were up at 5am preparing for the event – a great job – thank you!

### **CSSP Singing Competition**

This year St Mary's entered the CSSP singing competition for the first time. Violet and Myka from Y5 represented St Mary's at St Peter's primary school last Friday after school. They both performed fantastically well with Violet finishing in second place overall. Well done, girls!

### **Y3 Stay and Pray, Tuesday 24.03.26**

On Tuesday, Mr. Hodge welcomed parents and carers of the Year 3 children to a special prayer and liturgy session in the school hall – *Stay and Pray*. The children took the lead, sharing their learning from Religious Education and guiding the prayerful reflection.

As part of the session, the children also performed the song, *Do This in Memory of Me*, which they have been learning. Their singing and thoughtful reflections made for a prayerful experience.

A huge well done to Year 3 for their fantastic work and to Mr. Hodge for organising the event. Thank you to all who attended.

### **Reception Class Trip to Blackpool Zoo 25.03.26**

On Wednesday, our reception class set off on an exciting trip to Blackpool Zoo. The torrential downpours did not deter them as they were well kitted out in their puddle suits and wellies – the adults were not so lucky, unfortunately, and got a bit of a soaking!

The children had a fantastic time exploring the different areas of the zoo and seeing the animals they have been learning about in class.

A big thank you to the staff and volunteers. It was a day full of fun, learning, and adventure. Well done, reception class!

### **Message for nursery parents from Mrs Cahalin, phonics leader**

We would like to invite you to a meeting introducing you to '**Read, Write, Inc. phonics**', which we use in school to deliver phonics. During the summer term of their pre-school year, children are taught phonics in a more formal way, teaching them the sounds (phonemes) that each letter makes, recognising each phoneme and matching it to its grapheme (the way we write it). We will be able to help support your child's learning at home by sending short videos that will allow your child to practise their phonics with you.

Please join us on **Wednesday 15th April at 9am** to find out more. The meeting will last around 20 minutes. A separate message has gone out about this.

Many thanks

Mrs Cahalin - phonics lead

### **PTFA News**

#### **Another £500 raised for 'Project Playground'**

The PTFA have raised a further £500 this week towards our playground improvement programme. This was through the *Tropics* prize hundred square and through the Easter Discos. The children had a great time at the discos – a big thank you to Ice Queen Lancashire for running the discos and a big thank you to our PTFA volunteers in organising the event, fetching refreshments and ensuring the children had such a fun time. And a big thank you to all our parents and carers for supporting.

#### **Bags 2 School**

Bag 2 School collection is being held on Wednesday 15<sup>th</sup> April. Bags to fill, have been sent home with the children today but if the bag has been mislaid or you are able to fill more than 1 bag - ordinary bin bags will suffice.

On the morning of the 15th, the top parking space on the school drive will be cordoned off for collections. For details of what can and cannot be donated - please visit their website <https://www.bag2school.com/what-we-collect>



Funds raised from the collection will go towards the PTFA 'Project Playground' appeal

#### **Fundraising opportunity**

**easyfundraising.org.uk**

Booking a holiday? You can raise a huge £125 donation for Chorley, St Mary's Catholic Primary School and Nursery when you book with TUI via **easyfundraising.org.uk!** There's no extra cost and it will make a real difference to our school. If you're not supporting us on easyfundraising yet, now's the perfect time to get involved. Hurry, this offer is only available until the end of March. Sign up today here:

<https://join.easyfundraising.org.uk/chorleystmaryscatholicprimaryschoolandnursery/40ZIOU/c2s/uc0KLOgX/CE072/facebook/>

So far Chorley, St Mary's Catholic Primary School and Nursery has 9 entries into easyfundraising's giveaway to win a £250 donation! You can help increase our chances of winning by signing up to support us before midnight 15th March:

<https://join.easyfundraising.org.uk/chorleystmaryscatholicprimaryschoolandnursery/40ZIOU/c2s/J1YccjD6/CE941/facebook/>

## **Chorley Borough Council Competition**

We have been asked to promote a competition being run by Chorley Borough Council to come up with names for new waste collection trucks!

*Dear Headteacher,*

*We are excited to invite your school to take part in a fun and creative borough-wide competition to help us name our brand-new fleet of food waste collection vehicles.*

*As we prepare to launch food waste collections from 13 April, we want to involve local primary school children in choosing imaginative, bold, and memorable names for the trucks.*

*Whether it's a pun, a character, or something completely unexpected, we want names that make people smile and remind everyone why recycling food waste matters.*

*The winning names will be proudly displayed on the vehicles as they travel around our communities.*

### **Key information and dates:**

1. Entries to be submitted to [communications@chorley.gov.uk](mailto:communications@chorley.gov.uk) by 5pm on 31 March.
2. Please submit your pupils' name ideas — along with the child's name and age for each entry.
4. A panel of officers will review all submissions and select the winning names – up to three names will be chosen.
5. The children behind the chosen names will be invited to meet the newly named trucks around 10 April.
6. Photography from this event will be used in communications to support the launch of food waste collections on 13 April.
7. Please note, if we receive very few entries, the competition may be cancelled.

If you have any questions, please respond to [communications@chorley.gov.uk](mailto:communications@chorley.gov.uk).

Kind regards,  
Chorley Council

## **Chorley FC Easter Holiday Club – message from Chorley FC**

*Chorley FC Community Foundation will be running our Kick, Play, Thrive Football & Activity Club during the upcoming Easter school holidays...*

*As the community foundation connected to Chorley Football Club, we are committed to providing positive opportunities for young people to stay active, build confidence and enjoy their school holidays in a safe and supportive environment.*

*We are also proud to be able to offer a limited number of funded places through the Holiday Activities and Food (HAF) programme, which includes activities and a nutritious lunch. **See poster at the end of this newsletter for further details.***

## **Yarrow Schools Alliance – for teacher trainees**

St Mary's is proud to have been a member of the Yarrow Schools Teaching School Alliance (YSA) for over a decade now. Over those years, we have welcomed a number of trainee teachers on placement here at school. Many of these teachers have gone on to work in schools in Chorley and

the local area and have forged successful teaching careers. It is an excellent way into primary teaching. There are a number of routes into teaching but those who have taken this particular path speak very highly of it.

The teacher-training programme provided by the YSA is for those who want a career in teaching and already have a degree level qualification. The programme lasts for one year and involves two long-term placements in Chorley area primary schools alongside high quality training and support provided by the YSA. At the end of the programme, participants emerge as qualified teachers.

If you are interested, or you know anyone else who might be, please contact Rob Horne at [r.horne@st-georges.lancs.sch.uk](mailto:r.horne@st-georges.lancs.sch.uk). Alternatively, you can call me for a brief chat and I can tell you a little bit about.



## Free School Meals – Are you missing out?

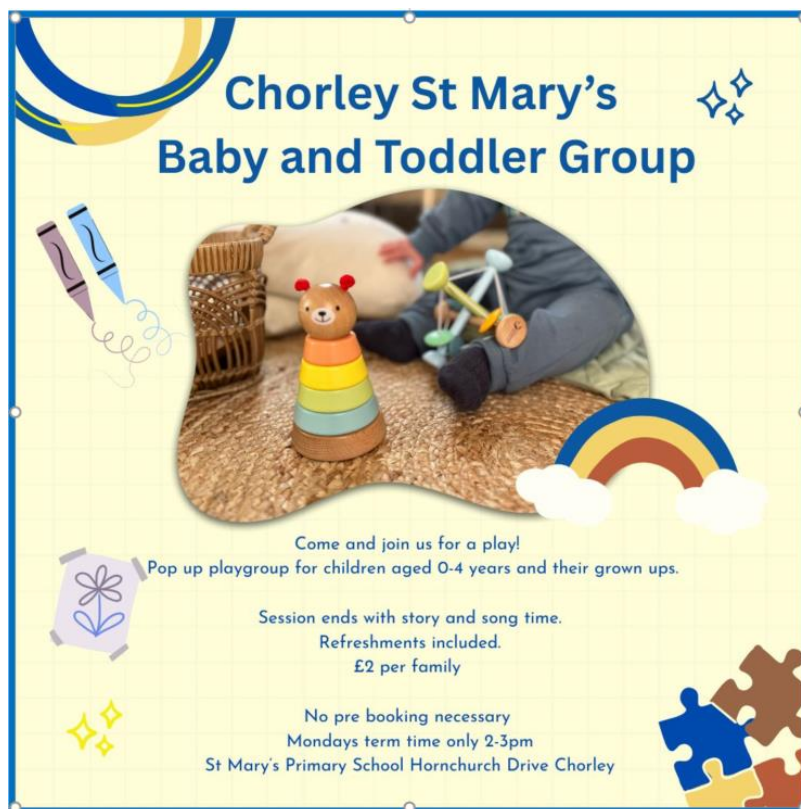
Find out if you are eligible and find out how to apply – follow this link.

<https://www.lancashire.gov.uk/children-education-families/schools/free-school-meals/?page=2>

## Baby and Toddler Group

We host a fantastic parent/ grandparent, baby and toddler group at St Mary's in the school hall on Monday afternoons – it's a very friendly group and the children have lots of fun. If you are interested, then please do come along or if you know anyone who you know think might be interested please point them in our direction. Thank you so much to the volunteers who come along to run the sessions each week.

– it is a very enjoyable session – please spread the word!



## Message from Chorley St Mary's Beavers, Cubs and Scouts groups

Chorley St. Mary's currently have spaces in their Beaver and Cub sections, and some availability in the Scout section. We meet at the Scout Hut on Hodder Avenue, PR7 3PB on Friday evenings during term time. Beavers and Cubs meet from 5 30 to 6 45pm, and Scouts from 7 till 8 30pm. We have a wide and varied programme and have a lot of fun in our Scouting activities. Please email [jacqueline.malone@chorleyscouts.org.uk](mailto:jacqueline.malone@chorleyscouts.org.uk) for more information.

## Foodbank

Following on from the fabulous support shown for our Harvest Service back in October, we are reinstating the drop-off box in the main entrance for donations for the **Living Waters - Storehouse** food bank. You can use this for further donations of tinned/packed goods or other items such as toiletries (shampoos/bubble bath) or even gift sets as the Christmas season approaches. Thank you.

## Tax-free childcare

One of our governors shared some information with me a couple of years ago to pass on to parents and carers - here is a reminder, in case your circumstances have changed.:

You can get up to £500 every 3 months (up to £2,000 a year) for each of your children to help with the costs of childcare. This goes up to £1,000 every 3 months if a child is disabled (up to £4,000 a year). For every £8 you pay into this account, the government will pay in £2 to use to pay your provider.

You can get Tax-Free Childcare at the same time as 30 hours free childcare if you're eligible for both. You can use Tax-Free Childcare for: childminders, nurseries and nannies and after school clubs and play schemes. <https://www.gov.uk/tax-free-childcare>

**Smartphone Free Childhood**

**Fact of the Week**



**FACT OF THE WEEK**

Executive functions like planning and self-control are best developed through hands-on activities.

You will notice around school a QR code inviting parents and carers to the St Mary's Smartphone Free childhood Whatsapp group. Here is the link again:



**You are not alone in wanting to create a childhood free from smartphones and social media.**

**Join the St Mary's Smartphone Free Childhood WhatsApp community for tips and support because screens can wait - childhood cannot!**

<https://www.smartphonefreechildhood.org/>

*Smartphone Free Childhood – 'We're united for childhood - Join the growing movement of families who believe childhood's too short to scroll away.'*

**Attendance**



**Chorley, St Mary's Attendance League**  
**2025/2026 w/e 27.03.26**



CURRENT POSITION	CLASS	Last week	CURRENT %	↑ OR ↓
1 <sup>st</sup>	YEAR 3	97.69	97.59	↓
2 <sup>nd</sup>	YEAR 4	97.14	97.03	↓
3 <sup>rd</sup>	YEAR 2	96.81	96.84	↑
4 <sup>th</sup>	YEAR 1	96.66	96.79	↑
5 <sup>th</sup>	YEAR 5	96.58	96.63	↑
6 <sup>th</sup>	RECEPTION	96.27	96.26	↓
7 <sup>th</sup>	YEAR 6	93.98	94.02	↑

Congratulations to Year 1 who achieved **100%** attendance this week!

*At primary school, children who have high attendance (95-100% attendance) in Year 6 are 30% more likely to achieve the expected standard in reading, writing and maths compared to similar pupils who miss just 2-4 weeks of school (90-95% attendance).*

### Lancashire Schools Attendance Data up to 26.03.26

**How does St Mary's compare?** (We have moved up four places in last fortnight)

Attendance measure	Percentage	Ranking ①
Overall attendance	96.5%	You are ranked 88th out of 481 schools
Overall absence	3.5%	You are ranked 88th out of 481 schools
Authorised absence	3.1%	You are ranked 148th out of 481 schools
Unauthorised absence	0.4%	You are ranked 34th out of 481 schools
Persistently absent	6.8%	You are ranked 108th out of 481 schools
Severely absent	0.0%	You are ranked 1st out of 481 schools



### Some reminders

**Earrings and Jewellery** - For safety reasons, earrings are not to be worn in school. If

#### Hair styles

We expect pupils to have sensible hair styles. Cuts, dyed hair or styles which in the judgement of the school are extreme, are not acceptable. Please keep the school and nursery a fashion-free zone!

#### Hair tied-up to prevent head lice infection, please!

As we all know, head lice do not fly or jump from head of hair to head of hair, they just walk! Therefore, to prevent the spread of head lice in school we ask that hair, longer than shoulder length, be tied back. Many thanks.



**Shoes** Pupils are expected to wear plain black shoes.



Again, we want school to remain a fashion-free zone. Some sports companies make black trainers for children. We ask you not to use these for school. They are trainers and not shoes and of course, the children will prefer to wear them! However, once one has them, this puts pressure on the other children to ask their parents for them. Many thanks for your co-operation in this matter.

**No boots please!**



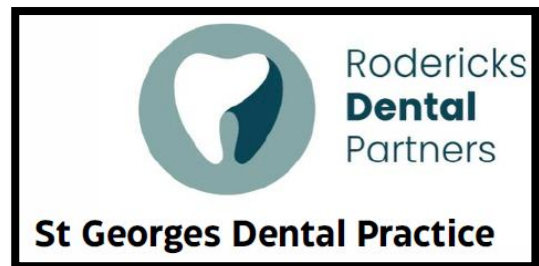
**Labelling Uniforms**

The children really look smart in their uniforms but so that bits and pieces do not go missing, please ensure that **all items** are labelled clearly with your child's name. Thank you. If items do go missing, we will be putting the lost property box in the newly available space in the main entrance.

P Smyth  
27.03.26

**NHS Dentist for Children**

We have been contacted by the NHS to publicise NHS dentistry for children. Please see attached leaflet.



**Message from SVP Chorley Buddies**

**SVP Chorley Buddies**  
*We're Helping*  
**01257 542 367**

Supported by  
**Chorley Council**

<b>Activity Classes</b>	<b>Good Food Clubs</b>	<b>Community Café</b>	<b>Craft Club</b>	<b>Children's Activies</b>

Part of the SVP Nationally



**SVP Chorley Buddies**  
We're Helping

**01257 542 367**



**St Vincent  
de Paul Society**  
England and Wales  
Turning Concern into Action

Monday	Tuesday	Wednesday	Thursday	Friday
<p><b>Seated Yoga</b> Adlington Library 9:30-10:30am. <b>FREE to all.</b></p>	<p><b>St Joseph's Good Food Club</b> St Joseph's Parish Centre, Harpers Lane, Chorley 10:30-11:15am, followed by refreshments. <b>£5 to shop and donations for refreshments.</b></p>	<p><b>Coppull Good Food Club</b> St John the Divine Parish Hall, Coppull 10:30-11:15am, followed by refreshments. <b>£5 to shop and donations for refreshments.</b></p>	<p><b>Buttermere Good Food Club</b> Buttermere Community Centre, Chorley 10:30-11:15am, followed by refreshments. <b>£5 to shop and donations for refreshments.</b></p>	<p><b>Clayton Brook Good Food Club</b> Clayton Brook Village Hall, Clayton-le-Woods 10:30-11:15am. <b>£5 to shop and refreshments available in the Café.</b></p>
<p><b>Knit and Natter</b> Primrose Gardens, Chorley 10am-12pm. <b>Donations welcome.</b></p>	<p><b>Seated Yoga</b> Adlington Library 11am-12pm. <b>FREE to all.</b></p>	<p><b>Gardening Club</b> Buttermere Community Centre, Chorley 11:00am-12:00pm. <b>FREE to all.</b></p>	<p><b>Seated Exercise</b> Ravensthorpe Independent Living Accommodation, Astley Village 10:30am-11:30pm. <b>£3 suggested donation.</b></p>	<p><b>Aquarobics</b> All Seasons Leisure Centre, Chorley 3-4pm. Term time only. <b>£5 suggested donation.</b></p>
<p><b>Kids Arts and Crafts</b> Coppull Library 3:30-4:30pm. <b>Term time only.</b></p>	<p><b>Chair Fit</b> Euxton Community Centre, 11:15am-12:15pm. <b>£3 suggested donation.</b></p>	<p><b>Lunch Social</b> 2nd Wednesday of the month St Chad's Parish Centre from 12-2pm <b>BOOKING ESSENTIAL</b> Donations welcome.</p>		
	<p><b>Lunch Social</b> 4th Tuesday of the month Buttermere Community Centre, Chorley from 12-2pm. <b>BOOKING ESSENTIAL</b> Donations welcome.</p>	<p><b>Buddies Café</b> Buttermere Community Centre, Chorley 9am-3pm Affordable café with crafts running from 12:30-2pm <b>Everyone welcome</b></p>		
	<p><b>Seated Exercise</b> All Seasons Leisure Centre, Chorley 3-4pm. <b>£5 suggested donation.</b></p>	<p><b>Chair Fit</b> Croston Old School, Church Street, Croston 1:30-2:30pm. <b>£3 suggested donation.</b></p>		



**SCAN TO DONATE**

FRIENDS OF ADLINGTON LIBRARY



# SPRING CRAFTS

**ON THURSDAY 9<sup>TH</sup> APRIL**

**9.45am to 10.45am or**

**11am to 12pm**



**BUNNIES, LAMBS,  
FLOWERS, CHICKS,  
HARES,**

**TO MAKE AND DECORATE**

**\*\*\*booking recommended\*\*\***

**BOOK YOUR PLACE ON LINE AT LCC OR  
AT ADLINGTON LIBRARY OR RING**

**07955507734**

**FIND US ON FACEBOOK. AND INSTAGRAM**

## Chorley Sweet Chilli Parenting Workshops

See below leaflets about Chorley Sweet Chilli parenting workshops – the first one is in June/ July, the second in September/ October. I know some of our parents have attended these in the past and have found them very useful. See below for details.



**A down-to-earth workshop in a supportive setting**

Learn about brain development, parenting styles, attachment, the impact of stress on both adults and children and how a trauma informed and therapeutic approach to parenting can have a positive impact on the whole family

**No Jargon**  
We keep things simple and relatable

**No Judgement**  
Share your experiences without fear of criticism

**No Pressure**  
Join in the discussion as much or as little as you would like

### Chorley Sweet Chilli Parenting Workshop Dates

Wednesday 10<sup>th</sup> June 2026 9:30 am - 2:30 pm  
Wednesday 17<sup>th</sup> June 2026 9:30 am -12:30 pm  
Wednesday 24<sup>th</sup> June 2026 9:30 am -12:30 pm  
Wednesday 1<sup>st</sup> July 2026 9:30 am -12:30 pm

The sessions will take place at the Home-Start Central Lancashire offices, 112a Market Street, Chorley PR7 2SL  
Access to the building is via the Fleet Street Car Park

If you would like to register for a place on the session, please call the office on 01257 241636 and ask to be added to the booking list.

Please be aware that **all sessions** must be completed, and we are unable to offer any childcare for the sessions.  
Places are limited and will be allocated on a first-come first-served served

If you would like to hear about our future Sweet Chilli Parenting Workshops, please register via the QR code and we will then be able to send you the information when new sessions are released.



**A down-to-earth workshop in a supportive setting**

Learn about brain development, parenting styles, attachment, the impact of stress on both adults and children and how a trauma informed and therapeutic approach to parenting can have a positive impact on the whole family

**No Jargon**  
We keep things simple and relatable

**No Judgement**  
Share your experiences without fear of criticism

**No Pressure**  
Join in the discussion as much or as little as you would like

### Chorley Sweet Chilli Parenting Workshop Dates

Thursday 17<sup>th</sup> September 2026 9:30 am - 2:30 pm  
Thursday 24<sup>th</sup> September 2026 9:30 am -12:30 pm  
Thursday 1<sup>st</sup> October 2026 9:30 am -12:30 pm  
Thursday 8<sup>th</sup> October 2026 9:30 am -12:30 pm

The sessions will take place at the Home-Start Central Lancashire offices, 112a Market Street, Chorley PR7 2SL  
Access to the building is via the Fleet Street Car Park

If you would like to register for a place on the session, please call the office on 01257 241636 and ask to be added to the booking list.

Please be aware that **all sessions** must be completed, and we are unable to offer any childcare for the sessions.  
Places are limited and will be allocated on a first-come first-served served

If you would like to hear about our future Sweet Chilli Parenting Workshops, please register via the QR code and we will then be able to send you the information when new sessions are released.





# EASTER HALF TERM 2026

£21.50 per day  
Optional lunch £3

## KICK, PLAY, THRIVE FOOTBALL & ACTIVITY CLUB

Chorley  
Council



- ✓ 30/3 -02/04 (HAF) & 07 - 10/04
- ✓ Boys and Girls aged 5-12 years
- ✓ All abilities welcome
- ✓ Full day Programme 09:30 - 16:30
- ✓ HAF Programme 09:30 - 13:30

- TRAIN WITH CHORLEY FC PLAYERS AND COACHING STAFF
- UEFA QUALIFIED COACHES
- FOOTBALL GAMES, SKILL CHALLENGES AND TOURNAMENTS
- FUN MULTI-SPORT ACTIVITIES AND TEAM GAMES
- CERTIFICATES AND AWARDS TO CELEBRATE ACHIEVEMENTS

FULL DAY SPACES CAN BE BOOKED HERE

[CHORLEYFCFOUNDATION.CO.UK/CHORLEY-HOLIDAY-CLUB](https://www.chorleyfcfoundation.co.uk/chorley-holiday-club)

HAF SPACES CAN BE BOOKED HERE

[HTTPS://WWW.HOLIDAYACTIVITIES.COM/HOW-IT-WORKS/RECIPIENTS/](https://www.holidayactivities.com/how-it-works/recipient/)

For more info call 07523 952149 - Please book early as places are limited