

# **St. Mary's**

Catholic Primary School  
Chorley



Policy Document

**for**

RE Curriculum



## RE Policy

### Mission Statement:

**'With Christ, we live, love, learn and grow.'**

(Our full 'Mission Statement' is attached at the end - it is reviewed every 5 years).

### Intent

At Chorley St. Mary's Catholic Primary School and Nursery Religious Education from pupils first day in school to their last, forms the central focus of each individual's journey of learning and faith. As our mission statement says, we believe our school exists to support and promote Catholic ideals and the example of Christ, which we all strive to follow.

We try in school to build a caring community, which is based on Gospel values that support pupils on a lifelong journey of faith. We hope that these beliefs and values will permeate every aspect of our school life, the work we do, the relationships we form and the spiritual and moral development of our children.

We believe that all our pupils have a right, through their Baptism, to a Catholic education, which will proclaim and reveal the life of Christ to them and give true purpose and meaning to their own lives. By providing this, children will develop into well-rounded citizens for the future with their attitudes, decision-making and relationships underpinned and informed by our strong school ethos of having Christ at the centre of all we do - in the belief that anything is possible in Christ's hands. In our Catholic, Christian community we aim for excellence by learning, improving and achieving.

The Religious Education offered in school is centred on "Come and See", the recommended scheme of the Liverpool Archdiocese. Its purpose is to help our children to recognise and appreciate the religious and spiritual dimensions of life, appropriate to their age and maturity, and to deepen their knowledge, appreciation and understanding of the Catholic faith. We also use 10:10 (and other resources) to deliver Collective Worship. This website is a media-rich prayer, liturgy and worship resource for assemblies, classrooms, teachers and parents (newsletters, videos and links).

St Mary's Catholic Primary School also forms an integral part of the life of St Mary's parish, supporting and promoting Catholic ideals and the example of Christ, to be followed in all aspects of daily life.

### Implementation

#### RE Curriculum:

The aim of Religious Education is to include objectives/learning intentions which take into account the religious and educational needs of our children:-

- those from supportive Catholic homes,
- those for whom the school may be their first and perhaps only experience of church,
- those from other Christian traditions,
- those from other faith backgrounds.

Religious Education is for all. It is a collaborative activity, which respects and promotes the child's innate capacity for wonder, awe, reverence, imagination – for the 'spiritual'.

The objectives of the Religious Education teaching are as follows:-

- a) to provide opportunities for the celebration, prayer and reflection in implicit and explicit ways,
- b) to provide children with the language of religious experience,
- c) to present a 'systematic presentation of the Christian event, message and way of life' in ways appropriate to the age and stage of the development of the child,
- d) that appropriate materials about other faiths will be included in the Religious Education teaching.

To fulfil our aims and objectives we use the "Come and See" programme of Religious Education recommended by the Archdiocese of Liverpool.

For all children the programme will raise questions and provide material for reflecting on their own experience. It will help them to explore the beliefs, values and way of life of the Catholic tradition and where appropriate of other faith traditions.

For those from committed families, it will deepen and enrich their understanding and living of their faith.

Central to the programme are the three basic human questions and the three Christian beliefs that are the Church's response in faith.

|                       |                         |
|-----------------------|-------------------------|
| Where do I come from? | Life --- Creation       |
| Who am I?             | Dignity --- Incarnation |
| Why am I here?        | Purpose --- Redemption  |

These three doctrines of Christianity express faith in God as Trinity: Creator, Saviour, Spirit; and personal: Father, Son and Holy Spirit: the Holy One whose love gives life to all (creation); who makes all holy (incarnation) and those whose purpose is to draw all men and women into one, universal family of God (redemption).

Each term explores three themes. Each theme relates to one of the key dimensions of religious and Christian faith:

Community of Faith -- Church

Celebration of the ritual -- Sacraments

Way of life -- Christian living

To develop knowledge, understanding, skills and attitudes the process for delivering the Come and See programme has three stages – Explore, Reveal and Respond.

For a breakdown of the Themes/Topics or the process for delivery in Come and See please visit the Come and See website at [www.comeandseere.co.uk](http://www.comeandseere.co.uk).

The school is fully aware that the new Religious Education Directory (RED) will form the focal point for planning and delivery of the RE Curriculum from September 2024 and we plan on using the academic year of 2023/24 to prepare staff for this change.

## Roles and Responsibilities:

The RE SL will:

- Ensure that RE is central to school life and that our School Mission Statement is lived out each day and clear for all to see/witness.
- Manage the implementation of the school policies (RE, RE Staff Handbook, Spiritual, Moral and Collective Worship), updating the policies and schemes of work to support planning on a regular basis in line with new initiatives.
- Order, update and allocate appropriate and sufficient resources.
- Model high quality teaching of RE.
- Identify needs and arrange INSET so that all staff are confident in teaching and assessing RE.
- Keep abreast of new developments and communicate these to staff.
- Take an overview of the whole school planning to ensure that there is continuity and progression between year groups and learning is effectively planned for.
- Support staff in developing pupils' capability within RE.
- Attend appropriate courses and maintain links with the Liverpool Archdiocesan Team (based at LACE).
- Monitor and evaluate standards in teaching and learning in RE. E.g. Looking at pupils' work, do Lesson Observations and Conduct Pupil Interviews.
- Contribute to the School Development Plan on an annual basis to maintain and raise standards in RE.
- Assist colleagues in the planning and delivering of units/lessons.
- Report to governors.
- Use assessment of RE to inform future planning.
- Identify opportunities for RE in the wider school curriculum.

The class teachers will:

- Plan and deliver RE units/lessons to their class.
- Assess the work and progress of pupils and communicate to the RE co-ordinator.
- Identify any other opportunities for RE in the wider school curriculum.
- Have responsibility for the teaching, learning and assessment of RE and report on pupil progress to parents.

## Impact

### Assessment, Record Keeping and Reporting:

This is focused by the overall aims and objectives of the Come and See programme and the Religious Education Curriculum Directory for Catholic Schools and Colleges (Pages 65-66). In Come and See, assessment is related to the concepts, skills and attitudes to be developed through the exploration of the themes and learning outcomes for each topic. Assessment establishes what pupils know, understand and can do. It does not assess faith or the practice of faith. Assessment in Come and See emphasises a wide range of achievement.

Assessment consists of:

1. Informal ongoing assessment of all topics,
2. Termly formal class assessment.

Informal ongoing assessment takes place as:

- General observation of children engaged in classroom tasks and activities on a daily basis,
- Observation of contributions made to classroom displays,
- Review: end of task, activity, lesson, topic,
- Marking of more formal written work and
- Initialling on plans that 'Some children are where we expect them to be' (AT), 'Some children will not have made so much progress' (BELOW) and 'Some children will progressed further' (ABOVE - 'Greater Depth') statements.

Formal assessment takes place each term:

- On a topic directed by the Archdiocesan CES,
- Assessment tasks are provided by the Archdiocesan CES,
- In each year a Sacramental, Church and Christian Living Theme are covered,
- Each teacher keeps evidence of at least 3 samples of work from each topic - HA, AA, LA.
- Work is moderated internally and externally at Local Cluster Meetings.
- Copies of these are collected by the RE SL and retained in the school file.

In each topic, teachers are offered brief summaries of what children can be expected to know, understand and be able to do so they can measure work against expected standards for their age group. As for other curriculum subjects, these are expressed in terms of 'most children' and 'some children'. They provide support for the tasks of differentiation, assessment, recording and reporting.

Assessment for learning is continuous throughout the planning, teaching and learning cycle. Pupil attainment is recorded in a manner to assist the class teacher, inform the RE SL of standards (and help identify potential target individuals/groups) and to report attainment to parents.

#### Review:

The RE SL will review the policy annually.

Policy produced September 2019.

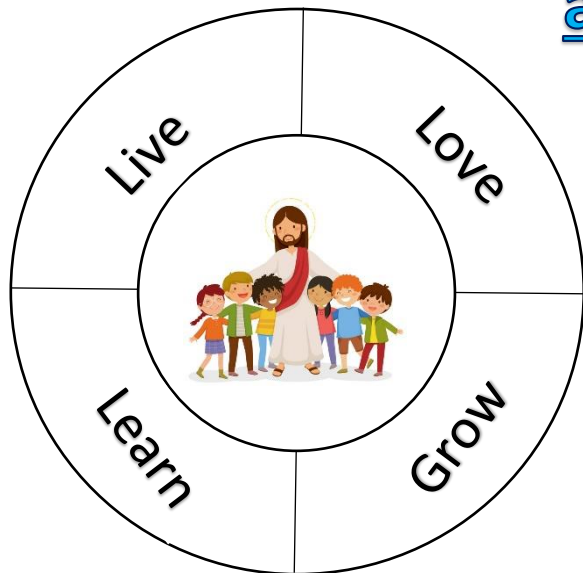
Policy reviewed September 2023.

## APPENDIX



# MISSION STATEMENT

## St. Mary's Catholic Primary School and Nursery



With Christ, we live,  
love, learn and grow.



With Christ, we aim to be a loving and  
welcoming Christian family...

- \*Daily Prayers
- \*Daily Prayer and Liturgy
- \*Come and See Lessons
- \*Feast Days
- \*Religious Reflections
- \*Sacramental Preparation
- \*Attending Mass at Church
- \*Attending Mass in School
- \*Class Assemblies
- \*Links with St.Mary's Parish
- \*Relationships and Behaviour (in school)
- \*Value of the Week
- \*Father Marsden Visits
- \*Journey in Love (RSE & HE)
- \*Stations of the Cross
- \*Christmas Liturgy
- \*Easter Liturgy

- \*Awards Assembly
- \*PALS



- \*House Teams (KS2)
- \*House Captains and Vice Captains
- \*Sports Leaders

- \*Positive Role Models
- \*Liturgical Calendar
- \*Come and See Displays
- \*Focus Tables
- \*Reception/Year 6 Buddies
- \*Encourage Interest and Enjoyment of Liturgical Seasons (e.g. My Day by Day or Walk with Me Booklets)
- \*Altar Servers
- \*Prayer Point
- \*Building Bridges – Other Faith Visitors
- \*Rosary Reflections
- \*Hymn Practices
- \*Nativity Performances





## With Christ, we aim to enable all to achieve their full potential...

- \*Star of the Week
- \*Dojo Champion (EYFS/KS1)
- \*House Team High Achiever (KS2)
- \*French Speaker of the Week
- \*Value of the Week
- \*Inspiring Curriculum
- \*High Quality/Well Trained/Dedicated Staff
- \*Swimming Lessons (Y4) and Catch Up Sessions (Y5/6)
- \*Music Lessons (LMS)
- \*EYFS – Exploratory Play/Discovery
- \*Educational Visits
- \*Curriculum Enhancement Visitors – e.g. police, fire brigade, author visits, PE Inspiration Days, CAFOD (CTS) etc.

- \*External Validation: PE School Games Gold Kitemark Award, Geography Mark, Primary Science Quality Mark, Green Flag Eco School Award, LCC Early Years Awards
- \*Themed Days/Weeks – FSC Day, Health Week, Fair Trade Fortnight, Anti-Bullying, Parliament Week, Safer Internet Day etc.



- \*Support for Additional Needs
- \*Counsellor
- \*Specialist Teachers
- \*Intervention
- \*Booster Groups
- \*Wide Range of Intra and Inter Competition and Extra-Curricular Opportunities provided by School Staff and the CSSP

- \*Staff CPD – YSA training, Cluster Meetings, Maths Hub, CSSP Courses, Youth Sports Trust etc.
- \*Love of Reading
- \*World Book Day
- \*Whole School Library
- \*Class Libraries
- \*Library Visits
- \*School Librarian
- \*Pupil Librarian's
- \*Enabling Parents to Support Learning e.g. Subject Meetings, Stay and Play, Parents Evenings etc.
- \*Outdoor Learning
- \*The School Dell
- \*Bikeability (Y6)
- \*Financial Education (Y5/6)
- \*Supervision for Staff
- \*Educational Psychologist
- \*Speech and Language Visits
- \*Differentiated Lessons

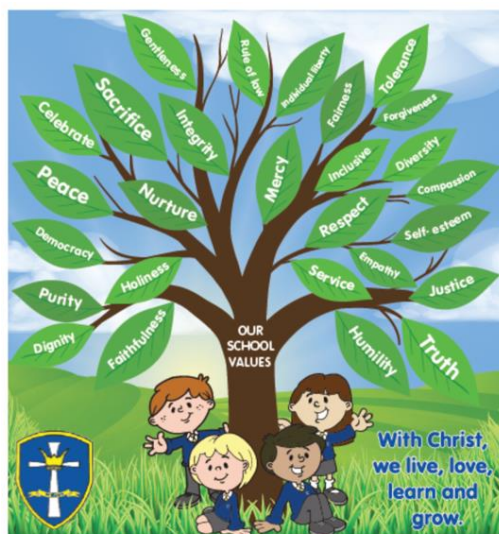


# With Christ, we aim to be a caring community...

## Family and School

- \*School Council
- \*Newsletters
- \*Class Dojo
- \*Tapestry
- \*SeeSaw
- \*TTRS
- \*IDL
- \*Groupcall
- \*Parent/Carer Information Evenings – Phonics, Reading, Art Exhibition, History Through the Decades Display, Nursery & Reception Induction Evenings etc.
- \*Parent/Carer Volunteers – Readers, Visit Leaders, Accompany on Visits.
- \*Twitter
- \*PTFA – Christmas Fair, Summer Fair, Charity Appeals etc.
- \*CAFOD, Good Shepherd, Derian House (The Good Shepherd)
- \*Stay and Play Sessions
- \*Performances; Christmas Nativities, Carols, Assemblies.

- \*Y6 Leavers Mass
- \*Sports Day
- \*Health Week Activities
- \*Parent Questionnaires
- \*Consultations with Stakeholders
- \*PE Steering Group
- \*Staff Macmillan Coffee Mornings



## Parish

- \*Parish Newsletter Distributed Weekly to All Families
- \*Little Church
- \*Governor as Parish Administrator
- \*Chair of Governors and School Business Manager Lead Little Church
- \*Supporting Local Foodbanks (Living Waters)

## Wider and Global

- \*Eco Council
- \*RE Subject Leader was Synod 2020 Representative and Contributed the Family and Child Version of the Pastoral Plan
- \*Strong Governing Body
- \*Association of Jewish Refugees Tree
- \*Local Business Links – Ebb & Flo Bookshop, Alabaster Jar, Dominoes Pizza, Frederick's Ice Cream, etc.
- \*Signposting Help for Families – e.g. Early Help. High School Links
- \*Transition – E.g. Visit Days, Teacher Support (e.g. in PE), Science Days, Thomas Martland Maths Quiz etc.
- \*Supporting the Chorley Catholic Network and their initiatives (e.g. Toy Appeal, Buddy Telephone System, Shopping Help and ALPHA Series etc.)
- \*Shoe Box Appeal