

Key Knowledge

A plant



A living thing that usually grows from the ground.

Garden plant

A flower grown especially in a garden.

Some common garden plants to be able to recognise and name:

- Rose
- Daffodil
- Sunflower
- Tulip

Wild flowering plant

A wild plant will grow by itself. It does not need to be cared for.

Some common wild plants to be able to recognise and name:

- Daisy
- Dandelion
- Buttercup

Deciduous Trees



Deciduous trees lose their leaves in the autumn every year. Their leaves are generally broad, flat and have veins running through them.

Evergreen Trees



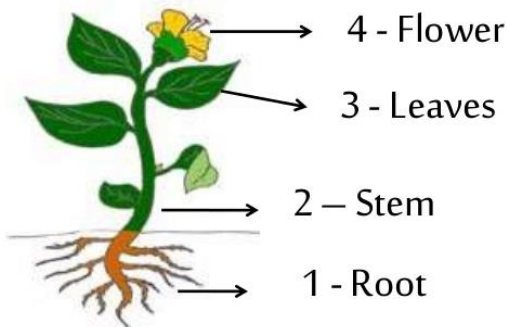
Evergreen trees have green leaves all year round. Their leaves are generally thick, waxy and narrow like needles.

Seed



The part of a flowering plant that can develop into a new plant.

Parts of a Plant

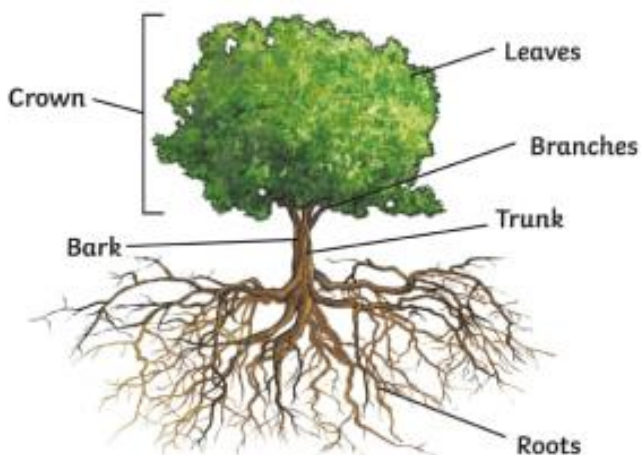


Key Learning

1. Identify and make close observations of plant leaves, seeds & flowers. (Collect, photograph, draw)
2. Identify plants by matching them to named images. (use simple identification chart)
3. Name the common parts of plants.
4. Identify some trees and describe their key features. (label parts of a tree)
5. Deciduous or evergreen?
6. Observe how plants change over a period of time (ongoing throughout the seasons).

Homework task: Observe plants further afield, that are the same as those studied in the local area, describing the key features.

Parts of a Tree



Key Vocabulary

Leaf, flower, blossom, petal, fruit, berry, stem, stalk, bud, root, seed, trunk, branch, bark

Names of trees in local area;

Names of garden & wild flowering plants in the local area