

Key Vocabulary

local area	The area around where you live.
map	A drawing of an area shown from above.
address	The place where someone lives or a business is found.
observe	To watch/look at something carefully.
passport	A travel document needed to travel to other countries overseas.
distance	How far away something is.
aerial view (bird's eye view)	What somewhere would look like from above, looking down.
fieldwork	Working outside to collect information.
route	How you get to somewhere.

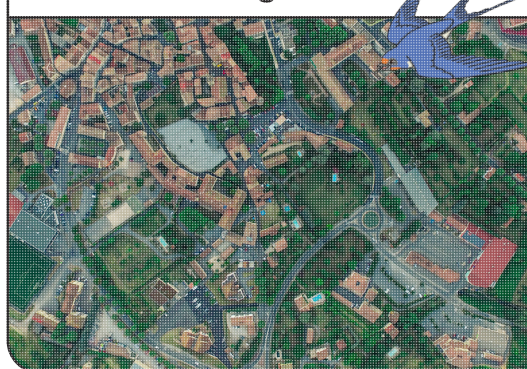
Where Do I Live?

An **address** needs to be written in a certain way so it gets to the right place.

Name of school	→	Twinkl Primary School,
Building number and road	→	12 School Road,
Town, village or area	→	Woodseats,
City	→	Sheffield,
County	→	South Yorkshire,
Postcode	→	S1 3TW

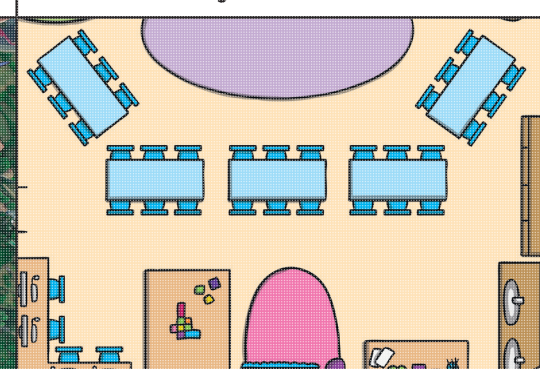
Aerial Photograph

A photograph taken from above looking down.



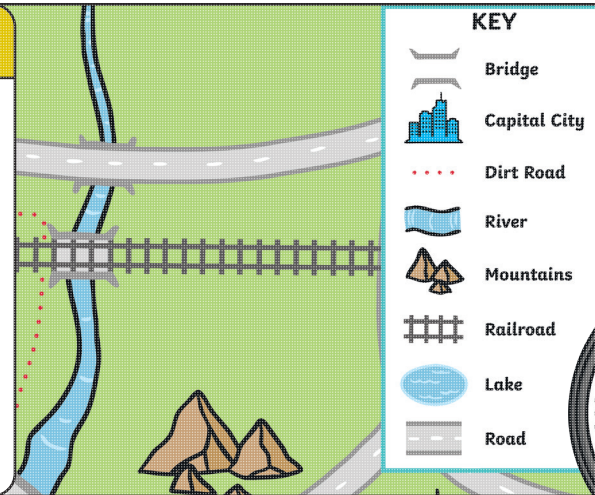
Aerial Plan

A drawing of what a place looks like from above.



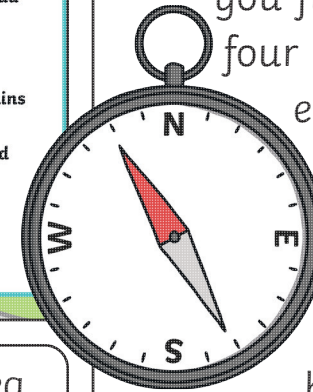
Maps

- A view from above a place
- Sometimes have a key with symbols
- Show the **distance** between places
- Sometimes have a compass
- Can use colour



Compass

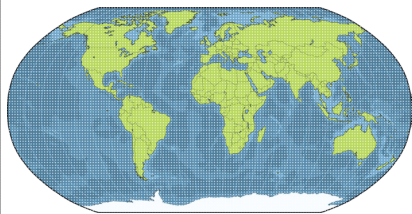
A compass can be used to help you find your way. It shows four directions - north, east, south and west. It is useful to people who are, for example, navigating ships and aircraft, explorers, builders, etc.



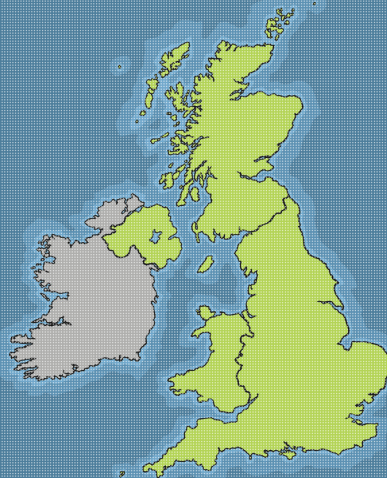
Symbols show what different things or places can be found in an area.

Types of Map

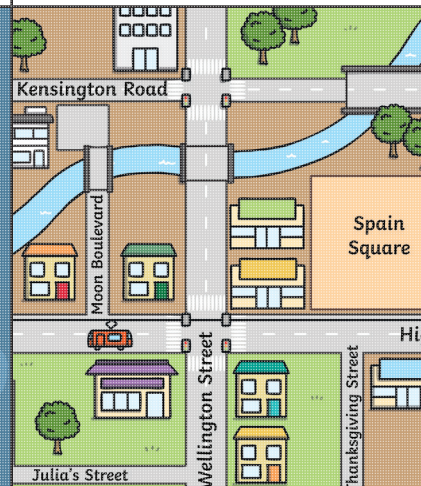
World Map



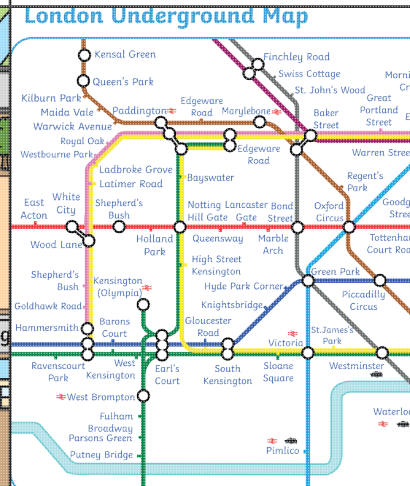
Map of UK



Street Map



Transport Map



Theme Park Map

