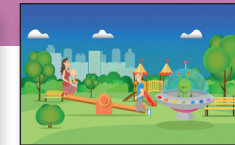


1decision PSHE Knowledge Organiser

Module: Our World

Topic: Living In Our World and Working In Our World

Year
2



Key Facts

- Stable, caring relationships, which may be of different types, are at the heart of happy families, and are important for children's security as they grow up
- For a healthy family life, it is important to care for, protect, and spend time with each other
- People in your community have different roles and responsibilities
- Money comes in different forms and from different sources
- People make different choices about saving and spending money

Ask me a question!

- How can we look after others?
- How can we look after our pets?
- How can we look after house and garden plants?
- Why do we need money?
- How can we receive money?
- How can we spend or save money?

By the end of these topics, I should:

- understand why we should look after living things
- be able to identify how we can look after living things both inside and outside of the home
- recognise why it is important to keep our communities and countryside clean
- be able to encourage others to help keep their communities and countryside clean
- understand different ways we can receive money
- know how to keep money safe
- be able to describe the skills you may need in a future job or career
- be able to recognise the differences between wants and needs

I will learn the following new words/phrases:

| | |
|-------------|--|
| Wildlife | A planet is a large object that orbits a star. |
| Community | A group of living things that share the same environment. |
| Credit Card | A card that allows the owner to buy goods or services and pay for them later. |
| Debit Card | A card that allows the owner to withdraw money or pay for goods or services using money in their bank account. |
| Spend | To exchange money or vouchers when buying a product or service. |
| Receive | To get or be given something. |
| Save | To place money in a money box or bank account to use at a later date. |