



The Friday *Flyer*

St Mary's Catholic Primary School

No. 4 23 September 2022

Dear Parents and Families,

A message from Mrs Durand



Equality, Diversity and Inclusion

We would like your help

The Department for Education states that the purpose of education goes further than just educational attainment; it is about “ensuring young people are prepared for adulthood, the world of work and to be a fulfilled and active participant in society.”

In order to ensure that our school and our community rises to this challenge, we warmly invite parents to join a working party to help us further develop equality, diversity and inclusion for all of our St. Mary's family. I plan to have an initial meeting on Thursday 29th September at 2.00 pm, which parents could join, either in person or via Teams. If you would be interested in working with us please can you register your interest by following the link below.

Thank you

Mrs Durand

[Equality, Diversity and Inclusion Meeting](#)

Have a lovely weekend.

Mrs Vassallo and Staff

St Mary's is committed to safeguarding and promoting the welfare of children and expects all staff and volunteers to share this commitment. Designated Safeguarding Leads at St Mary's are Mrs Vassallo, Mrs Durand and Mrs Beirne. They can be contacted at

safeguarding@stmaryscp.co.uk

Attendance matters

Accompanying the Friday Flyer is a copy of the Attendance, Arrivals and Departures policy. This forms part of our suite of safeguarding policies.

Good school attendance and punctuality are essential for children's learning and social development. Research shows that children who attend school regularly have higher levels of attainment in statutory assessments, stronger friendships and life skills for their future. As parents, you have a legal responsibility to ensure that your child attends school.

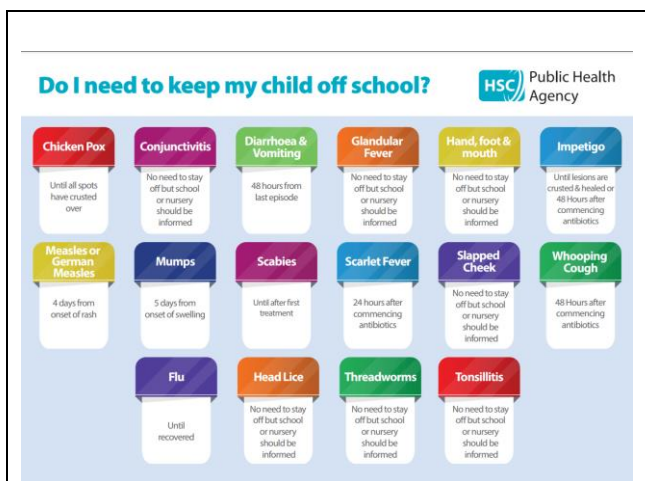
Amendments to the 2006 pupil registration regulations mean that headteachers cannot authorize leave for the purpose of a family holiday and in the case of unauthorized absences, a referral may be made to the local authority for a penalty notice. Attendance below 90% without extenuating circumstances will be referred to the education welfare officer.

Our school target for attendance is 97.2% and the good news is that the year is off to an excellent start. Attendance is strong and it is a pleasure to see the children so happy to come to school and to have full, busy classrooms.

We publish weekly attendance by class in the Friday Flyer. The class with the best attendance this half term will have a home clothes day on 14 October.



Headteacher: Mrs I M Vassallo BEd (Hons) ACP NPQH
Telephone: 020 8650 2355
Website: www.st-marys-catholic.bromley.sch.uk



RAB	100	RHH	99.4
1SW	96.5	1DS	100
2NG	94.1	2BY	97.1
3YL	98.3	3ES	100
4AC	97.7	4JB	97
5SR	95.6	5LM	98.7
6EW	96.2	6HW	92.9

Best classes for attendance last week: RAB, 1DS and 3ES.

Please call the school office by 8am if your child will be absent from school and each day until they are well enough to return.

Save our School Street

Thank you to the parents who have volunteered so far, but we still support.

The link to sign up is here:

<https://signup.com/go/KwimsZQ>.

There is still a small number of parents who enter the road during School Street and I would respectfully request that they refrain from doing so.

The School Street scheme is there to make the children's journey to school safer and we need everyone behind the initiative.

Musical achievements

Well done to Shawn in Year 3 who achieved his Grade 1 and Jack in Year 5 achieved his Grade 3, both in the violin.

An appeal from Living Well food bank

We are running low on ALL foodbank supplies. We currently need all basic items (listed below).

We are open for donations on Tuesdays between 11am-1pm, Thursdays 12.30 - 2pm and Saturdays 10:30-12:00.

We have donation boxes in:

- Sainsburys, Penge
- Waitrose, Bromley South
- The Goldsmith Arms, 3 Croydon Road, S20 7TJ
- Anerley Town Hall, Anerley Road, SE20 8BD
- Sainsbury's Local, Upper Elmers End Road

Items urgently needed are:

- UHT milk
- Tinned pulses
- Tinned vegetables
- Tinned meat
- Tinned fruit
- Tinned soup
- Rice
- Pasta
- Tinned rice pudding and custard
- Tinned tomatoes
- Biscuits
- Cereal
- Toilet roll
- Shower gel and shampoo
- Sanitary towels
- Pet food (dogs and cats)

Tins with ring pulls are always useful, as not everyone has access to a can opener. Please note we do not have any storage facilities for fresh or frozen goods. We are unable to accept food which is past its sell by or use by date.

We cannot accept any food item that contains alcohol.

Thank you!

Next week at St Mary's	
Monday 12 September	4JB swimming 1pm- 2pm 3.15pm- 4.30pm: Netball- Y3-6 3.15pm- 4.15pm: Football- Y3-6 3.15pm- 4.15pm: Taekwondo- R, Y1 & 2
Tuesday 27 September	4JB swimming 1pm- 2pm 7.50am- 8.40am: Gymnastics- Y1-6 3.15pm- 4.15pm: Taekwondo- Y3-6 3.15pm- 4.15pm: Multi-sports- Y1&2
Wednesday 28 September	4JB swimming 1pm- 2pm 3.15pm- 4.15pm: Irish dancing- Y3-6 4.15pm- 5.15pm: Irish dancing- Y1&2 3.15pm- 4.20pm: Hockey- Y4-6
Thursday 29 September	4JB swimming 1pm- 2pm FGB at 6.30pm 3.15pm- 4.15pm: Spotlights- Y1&2 4.45pm to 6.15pm Spotlights- Years 3-6
Friday 30 September	4JB swimming 1pm- 2pm Year 6 to forest school 3.15pm- 4.15pm: Karate- Y4-6 4.25pm- 5.25pm: Karate- Y1-3

All policies are available from the school on request.

