

St Matthew's C.E. Primary School

Knowledge Organiser

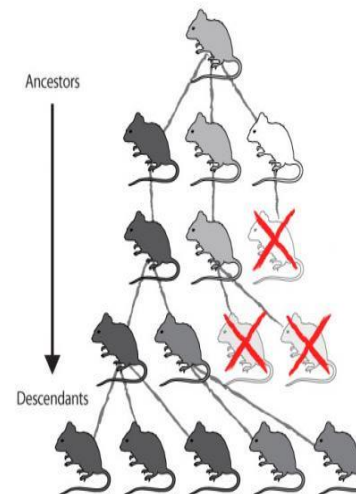
What should I already know ?

Fossils are remains of plants and animals from the past

Camouflage helps animals blend into their environment

Different locations on Earth have different climates and different wildlife

Adaptations of Owls



Key Vocabulary

Adaptation- animals change their characteristics to suit their environment

Evolution – the result of adaptation offering a living thing better chances of survival

Mutations – the small changes which occur randomly between generations

Variation – the differences which can be seen between similar species

Key Questions

Why are there so many different types of plants and animals?

What makes some living things more likely to survive?

How do living things change over time?

Why are certain animals only found in certain places?

How can we see animals adapt?

How fast is evolution?

Why do some species of plants and animals become extinct?

Year 6 - Survival