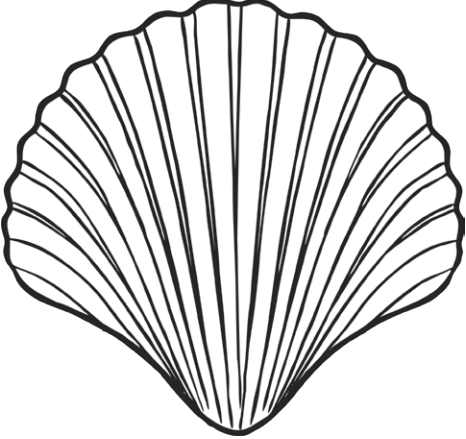

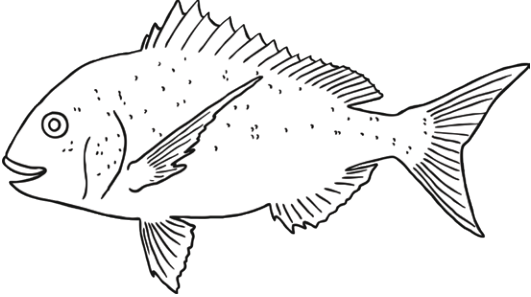


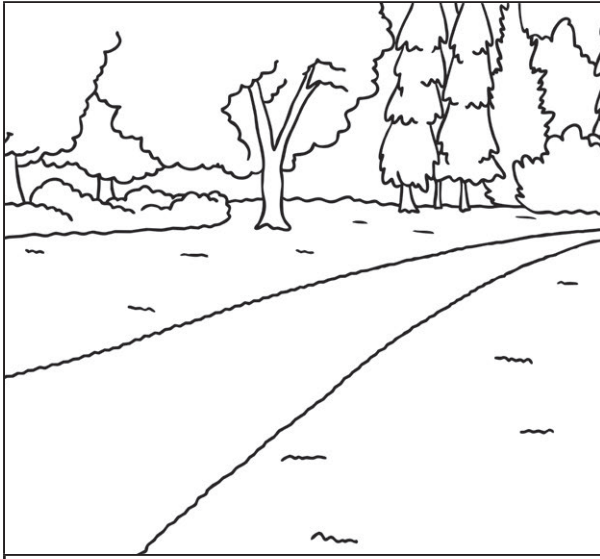
Phase 3 - Circle That Word!

Circle the word that matches the picture.

	<p>shell chell</p> <p>bell well</p>
	<p>ting sing</p> <p>ling ping</p>
	<p>fish kish</p> <p>tish wish</p>

Phase 3 - Circle That Word!

Circle the word that matches the picture.

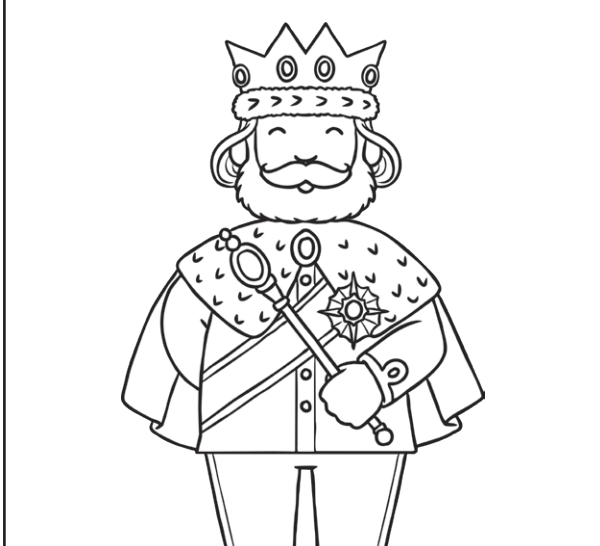


jath

lath

path

bath

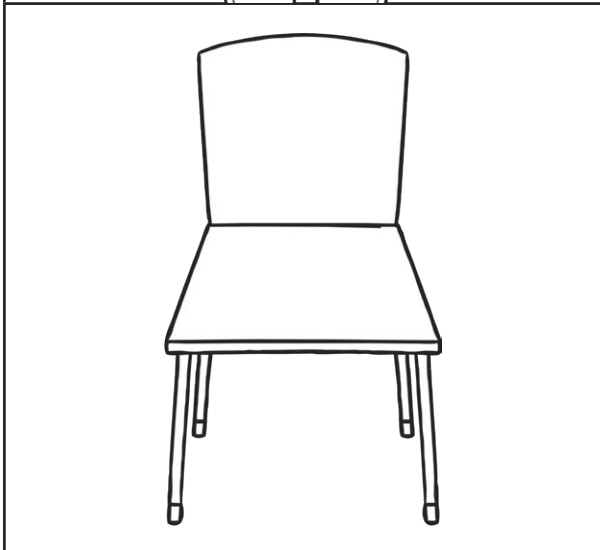


sing

bing

ling

king



chair

shair

thair

fair

Phase 3 - Circle That Word!

Circle the word that matches the picture.

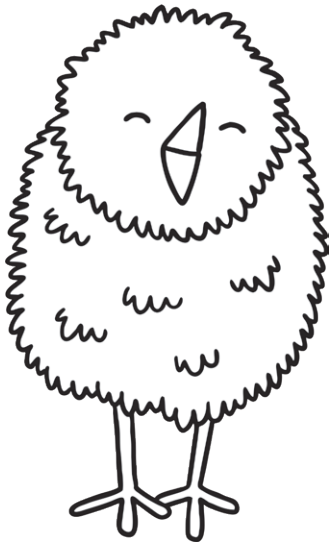
3

three

tree

shee

flee



chick

kick

thick

wick



wing

ring

thing

ding