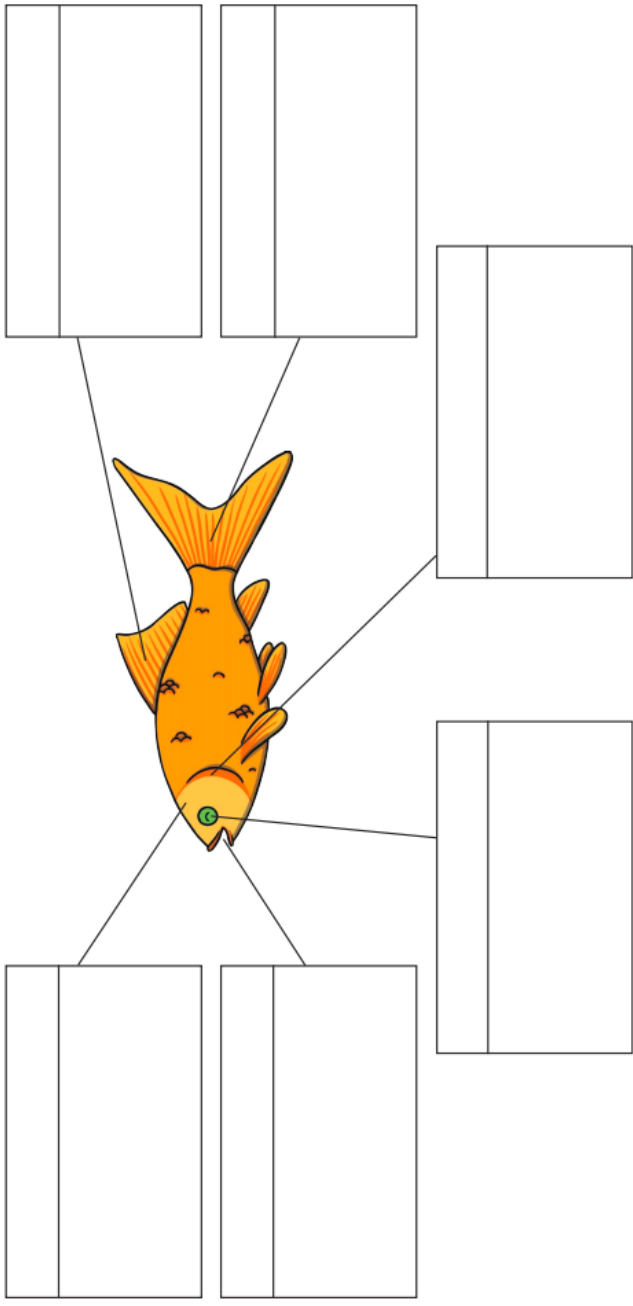


## Parts of a Common Goldfish

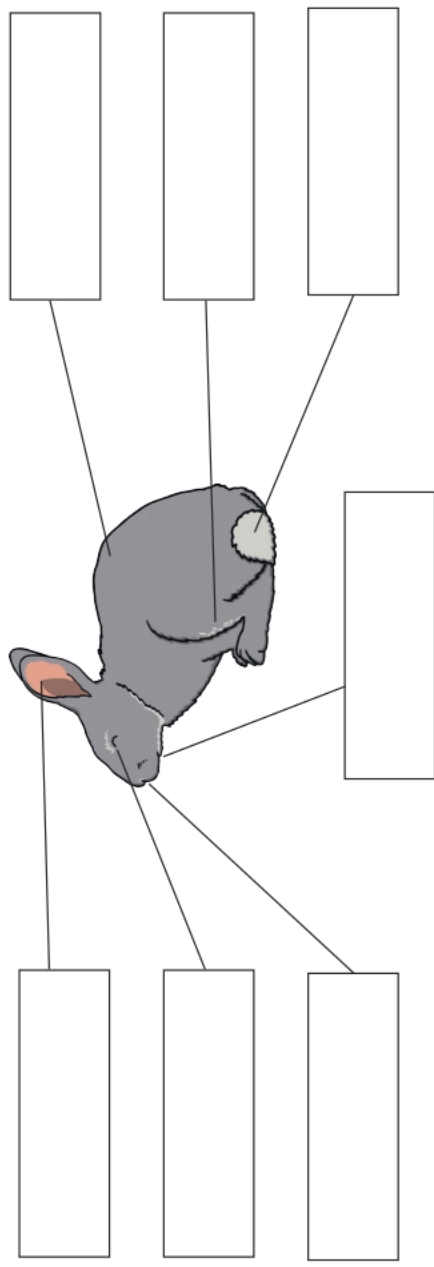
Use the words below to label the parts of the goldfish. Cut and stick the correct description in each box.



dorsal fin      tail      gill covers      eye      head      mouth

## Parts of a Rabbit

Cut and stick the parts of a rabbit to complete the diagram.



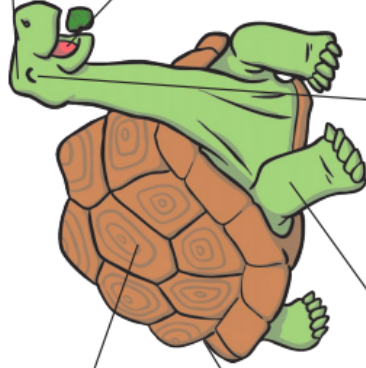
tail	nose	eye	fur
mouth	ear	hind leg	

# Parts of a Tortoise

Match the names of the parts of the tortoise with their descriptions. Then, cut and stick them in the correct place to label the tortoise.





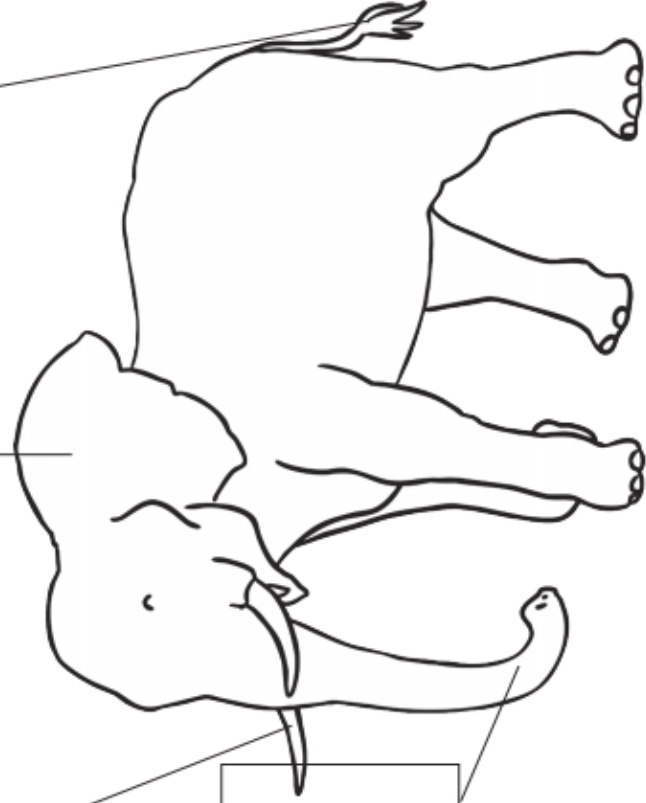




--

--

--



--