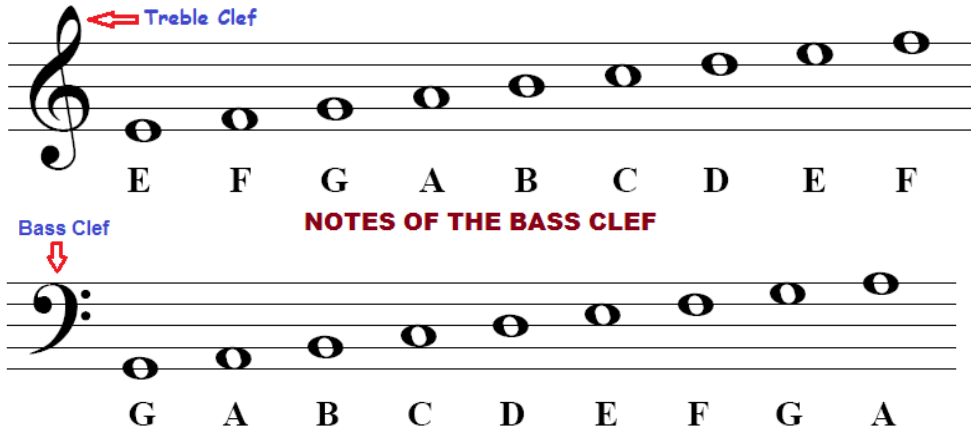


# Year 8 Knowledge Organiser

## Unit 1: Development of the Piano

### Notes on the Stave Treble Clef Notes



### Classical Music Eras

Baroque: 1600 – 1750  
 Classical: 1750 – 1825  
 Romantic: 1825 – 1900  
 Modern: 1900 – Today

### Common Key Terms (Linking to Eduqas Music GCSE)

**Tempo:** The SPEED of the Music

**Dynamics:** The VOLUME of the Music

**Crescendo:** Gradually getting LOUDER

**Diminuendo:** Gradually getting QUIETER






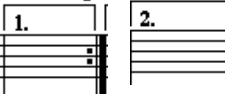
**Texture:** How THICK or THIN the Music is (How many instruments at once)

**Timbre:** The individual tone or character of a voice or instrument

**Mordent:** A single, rapid alternation of one note to the one above or below and back again

**Arpeggio:** Playing the notes of chord separately instead of together

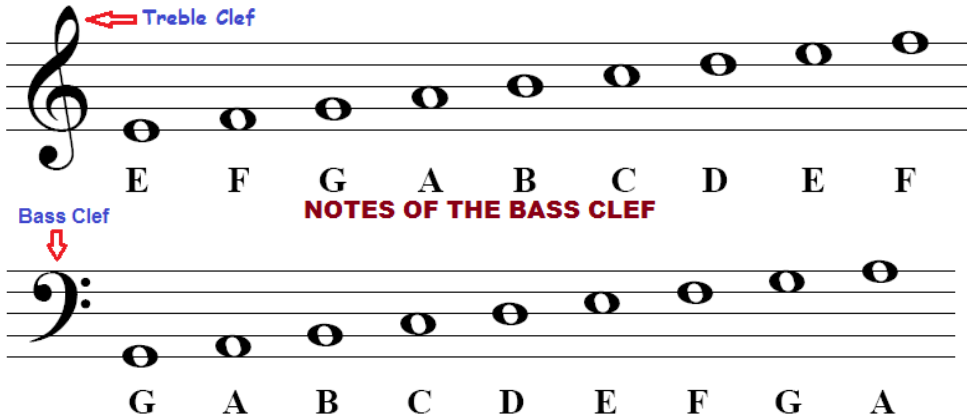
### Key Musical Symbols

	Sharp		Flat
	Natural		Slur
	Repeat Marks		1st/2nd Time Bar

# Year 8 Knowledge Organiser

## Unit 2: Reggae

### Notes on the Stave Treble Clef Notes



### Chords

A		Gm	
D		Cm	
E			

### Common Key Terms (Linking to Eduqas Music GCSE)

**Tempo:** The SPEED of the Music

**Dynamics:** The VOLUME of the Music

**Crescendo:** Gradually getting LOUDER

**Diminuendo:** Gradually getting QUIETER

**Texture:** How THICK or THIN the Music is (How many instruments at once)

**Timbre:** The individual tone or character of a voice or instrument

**Syncopation:** Playing on the weaker beats or in between the beats

**Chord:** A group of 3 or more notes played together

**Major:** Sounds HAPPY or complete

**Minor:** Sound SAD or more EMOTIONAL

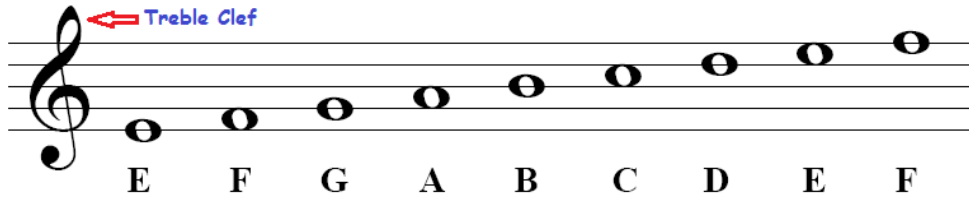
### Strophic Form

Intro  
Verse 1  
Chorus  
Verse 2  
Chorus  
Middle 8  
Chorus (x2)  
Outtro

# Year 8 Knowledge Organiser

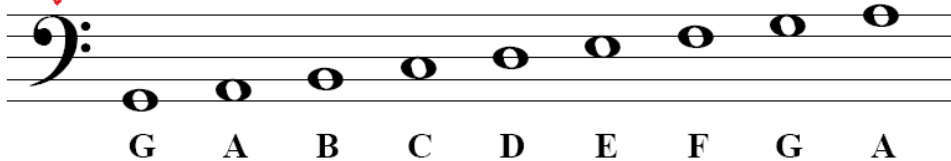
## Unit 3: Jazz and Blues

### Notes on the Stave Treble Clef Notes



Bass Clef  
↓

### NOTES OF THE BASS CLEF



### Dominant 7<sup>th</sup> Chords

C7



F7



G7



### Common Key Terms (Linking to Eduqas Music GCSE)

**Tempo:** The SPEED of the Music

**Dynamics:** The VOLUME of the Music

**Crescendo:** Gradually getting LOUDER

**Diminuendo:** Gradually getting QUIETER

**Texture:** How THICK or THIN the Music is (How many instruments at once)

**Syncopation:** Playing on the weaker beats or in between the beats

**Chord:** A group of 3 or more notes played together

**12-Bar Blues:** A common chord progression used in Jazz and Blues

**Dominant 7<sup>th</sup> Chord:** A MAJOR chord with an added b7 included

**Blues Scale:** An altered minor pentatonic scale with added b5 and b7 included

### 12 Bar Blues Chord Progression

