



## Wigan Music Service Whole Class Instrumental Lessons at Home



### GUITAR

#### Listen Up!

In this lesson we will look at The **Staff**.

The **Staff**, or sometimes it is called the **Staff** is a group of **5 Lines** and in between each line is one of **4 Spaces**. Each line and each space represent a different **Pitch**.

Watch and listen to the Video Clip below then answer the questions below.

- 1) Do we use **Every Green Bus Drives Fast** for the lines or for the spaces?
- 2) What word does the notes of the spaces spell?
- 3) Can you draw your own **Staff**?

Parents here is the link to the Video Clip

<https://www.youtube.com/watch?v=2wARqGvafN8>

#### Make Some Music



Can you work out what the notes are below? Look at where the oval part of the note is not the stick. Write the names of each pitch underneath.

1)



2)



. If you have your guitar play the notes, if not sing the notes.



# Wigan Music Service Whole Class Instrumental Lessons at Home

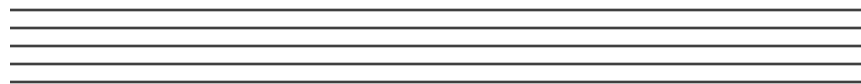


## GUITAR

### Investigate



- 1) In the video they use **Every Good Boy Does Fine** to remember the names of each of the **5 Lines** of the **Staff**. Can you think of your own phrase to remember the names of the **5 lines**?
  
- 2) Look at the notes written on the **Staff** in the 'Make Some Music' section.
  - a) Is it 1 or 2 which uses notes **Pitches B A and G**?
  - b) Each note in 2 lasts for just 1 beat in **Duration** are these called Minims? Crotchets? Or Semibreves?
  
- 3) So far we have played note **Pitches G A B C and D** draw these on the **Staff**.

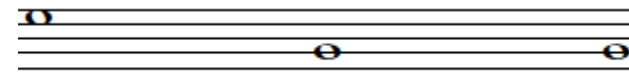


G            A            B            C            D

### More Fun

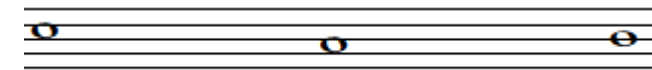
Can you work out the words that these notes spell? The first has been done for you.

1)

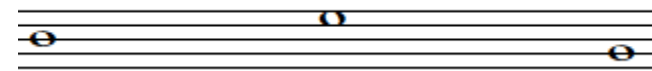


E G G

2)



3)



4)

