



# St Silas

Church of England Primary Academy

A member of **CDARI**

## Newsletter 13th September 2024

Parentkind – the charity that supports school PTAs - have teamed up with Asda, who is making millions of pounds available to donate to primary schools across the UK through their ‘Cashpot for Schools’ initiative – all you have to do is, opt in through the Asda Rewards app, choose our primary school and shop and scan in store or shop online at Asda.com, between 2<sup>nd</sup> September and 30<sup>th</sup> November 2024

Asda will donate 0.5% of the value of your shop to our Primary school. Also, every time somebody opts in, Asda will give an additional £1 to the school Cashpot. Plus, it doesn't stop there – Asda are also giving £50 to every school to get them started.

**INTRODUCING CASHPOT FOR SCHOOLS**

You scan we donate £££

**CASHPOT FOR SCHOOLS**

Only with **ASDA Rewards**

Download and opt-in today

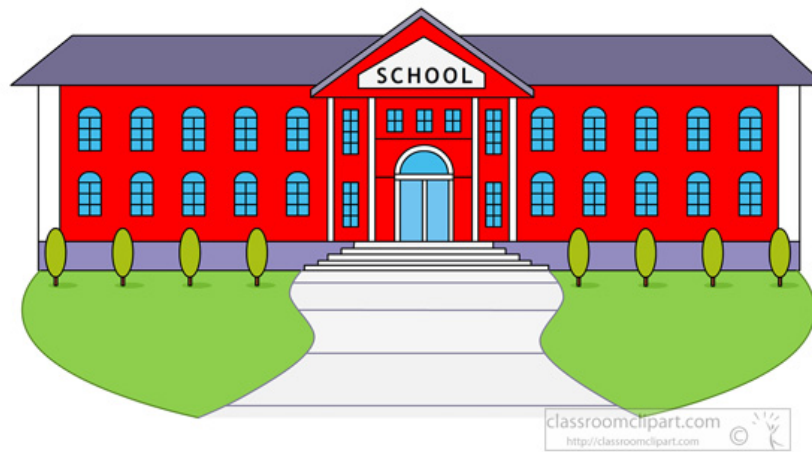
Parentkind

**ASDA**  
THAT'S MORE LIKE IT

Selected stores. Minimum spend £2\*. Exclusions apply including Asda Express & George.com. Subject to availability. UK 18+. App & Opt-in required. 0.5% of the value of a customer's eligible shop is donated. Publicly funded primary schools, must register with Parentkind charity 5072833. Full T&Cs at asda.com/cashpotforschools. Rewards T&Cs at asda.com/rewards/terms. Ends 30/11/24

## High School Applications

The time period for putting in your applications for your child's high school is now open until 31st October. Please make sure you apply through the local authority in good time.



## Emergency Procedures

When the fire alarm goes off the children are escorted from the school building to St Silas Church car park. This is at a safe distance from the fire load. Registers are taken at the church. This has been our procedure for many years and we practise regularly and the children know the routine well.

We also have shelter/lockdown procedures in place. This is when the children go to the nearest classroom and the adult locks the classroom door to keep them safe. These procedures were designed with the police a number of years ago and all staff are aware of them. They are constantly reviewed and will be reviewed again this year. We have never practised with the children, however in light of recent events over the holidays a practice would appear to be sensible. The children have been told in assembly this morning that we use shelter or lockdown if there is a fire in the local area and the fumes might affect our breathing and similar events so as not to frighten them. There will be practice in the next few weeks. Please do not be alarmed if your child talks about a lockdown or shelter or if you happen to see us practising.

## School Uniform



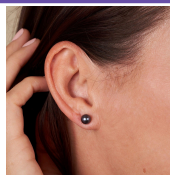
Please be reminded that children must wear the correct school uniform every day. Jogging bottoms and trainers are not acceptable clothing. Girls' hijabs must be either plain black or purple and for health and safety reasons must be a short length. PE uniform is black jogging bottoms and black trainers and must only be worn on PE day.

We have a large stock of free, pre-worn school uniforms so please contact the office if you need to replace your child's clothes.



### **Preloved Uniform**

We have lots of preloved uniforms in school so if you need a new school uniform for your children please feel free to have a look at our stock of spare uniforms.



### **Earrings During Sports Clubs and PE**

Unfortunately, due to health and safety concerns, the wearing of ear studs during any school physical activity session is now prohibited. This is in line with our partners at Blackburn Swimming Baths and Blackburn Rovers Community Trust. Any child wearing ear studs will, from next week, not be allowed to take part in the physical activity sessions. We ask that parents/carers remove ear studs on the days when children are taking part in sports and physical activity.



## Children's University

### **SCHOOL CLUBS**

Please note the club sign up is this Tuesday 17<sup>th</sup> September at 8am on ParentPay. Places are offered on a first come first serve basis. Information on all the clubs which are available have been sent out via email and text earlier this week. Please read all the information that has been sent. If you have any questions please contact Sara Burton on [s.burton@wensleyfold.blackburn.sch.uk](mailto:s.burton@wensleyfold.blackburn.sch.uk) or 07805929965 (please leave a message if there is no answer).

### **SUMMER HOLIDAY CHALLENGES AND ACTIVITIES**

If your child has completed any of the CU Challenges or any activities at the library (including the summer reading challenge) or the Trail in the Mall over the holidays please ensure you send the evidence to Sara Burton via [s.burton@wensleyfold.blackburn.sch.uk](mailto:s.burton@wensleyfold.blackburn.sch.uk) or 07805929965. You must still remember to send your child's CU passport in to school so it can be updated, please hand to your child's class teacher or into the office. If you prefer you can send the evidence of the challenges into school together with your child's CU passport so it can be checked and updated.

Please note all CU passports that have already been handed in have been returned to classes to take home. Please ensure you look out for this as no responsibility will be held by the school once it has been returned.

### **CHILDREN'S UNIVERSITY MEMBERSHIP**

If your child is NOT already a member of Blackburn Children's University and you would like to sign them up, you can do so now on ParentPay. Membership is £4 and is open to all children in years 1 – 6. Please see the letter sent out last week with more information on.

### **TESCO STRONGER STARTS – BLACKBURN CHILDREN'S UNIVERSITY VOTE**

Blackburn Children's University have been successful for the Tesco Stronger Starts Scheme and have been put forward to a customer vote in Tesco stores (Blackburn Superstore, Bank Top, Roe Lee, Livesey and Darwen Express). Voting will end on Monday 30<sup>th</sup> September 2024. The voting is to help fund Blackburn CU holiday activities including cooking as well as a variety of sport and wellbeing activities so children can have fun and learn new skills. Please look out for this if you visit any stores and pick up a token to cast your vote!

## SAMS Star Learners

Class	SAM Star Learner	Sports Star
Hawthorn	Maryam	
Hornbeam		
Beech	Nicholas	
Alder	Mahnur	
Elder	Anastasia	
Hazel	Yousaf	
Rowan	Azwa	
Birch		
Beehive	Linda	
Cherry	Hajra	Tommy
Willow	Mahir	Ayan
Oak	Hanzalah	Jamaal
Elm		
Ash		



## Breakfast Club

Why not send your child to our Breakfast Club in the morning? They can take part in various activities and have their breakfast together before they go into class. They can come anytime from 7.45 and it only costs £1.50 a day. Please ring the school to book them in

## This Week's Attendance



The winning class this week is **Rowan** with **100%** attendance!  
had Elm had 99.11% and Willow had 99.5% attendance

If your child is absent from school you **MUST** ring the school office to let them know.

It is important that your child is in school by 8.40 am and they must be picked up at 3.10 pm every day.

Please note holidays are not authorised. If your child misses more than 5 days in school due to a holiday you are likely to be fined. If you are considering taking a holiday please book a meeting with the headteacher

## Family Point Winners

The table below shows the winning families highlighted in yellow.

Congratulations to **Thankfulness** with 430 points. Service had 361 points, Belonging had 310 points and Love had 294 points

Family/Week	13.9.24										
Belonging	3										
Love	4										
Service	2										
Thankfulness	1										



## Children's University

### **SCHOOL CLUBS**

Please note the club sign up is this Tuesday 17<sup>th</sup> September at 8am on ParentPay. Places are offered on a first come first serve basis. Information on all the clubs which are available have been sent out via email and text earlier this week. Please read all the information that has been sent. If you have any questions please contact Sara Burton on [s.burton@wensleyfold.blackburn.sch.uk](mailto:s.burton@wensleyfold.blackburn.sch.uk) or 07805929965 (please leave a message if there is no answer).

### **SUMMER HOLIDAY CHALLENGES AND ACTIVITIES**

If your child has completed any of the CU Challenges or any activities at the library (including the summer reading challenge) or the Trail in the Mall over the holidays please ensure you send the evidence to Sara Burton via [s.burton@wensleyfold.blackburn.sch.uk](mailto:s.burton@wensleyfold.blackburn.sch.uk) or 07805929965. You must still remember to send your child's CU passport in to school so it can be updated, please hand to your child's class teacher or into the office. If you prefer you can send the evidence of the challenges into school together with your child's CU passport so it can be checked and updated.

Please note all CU passports that have already been handed in have been returned to classes to take home. Please ensure you look out for this as no responsibility will be held by the school once it has been returned.

### **CHILDREN'S UNIVERSITY MEMBERSHIP**

If your child is NOT already a member of Blackburn Children's University and you would like to sign them up, you can do so now on ParentPay. Membership is £4 and is open to all children in years 1 – 6. Please see the letter sent out last week with more information on.

### **TESCO STRONGER STARTS – BLACKBURN CHILDREN'S UNIVERSITY VOTE**

Blackburn Children's University have been successful for the Tesco Stronger Starts Scheme and have been put forward to a customer vote in Tesco stores (Blackburn Superstore, Bank Top, Roe Lee, Livesey and Darwen Express). Voting will end on Monday 30<sup>th</sup> September 2024. The voting is to help fund Blackburn CU holiday activities including cooking as well as a variety of sport and wellbeing activities so children can have fun and learn new skills. Please look out for this if you visit any stores and pick up a token to cast your vote!

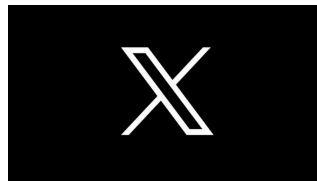




## Dates for your Diary - Upcoming Events

16th September	Meet the Teacher Year 5 3.15 pm
17th September	Meet the Teacher Year 4 3.15 pm
9th October	Flu Immunisations
9th October	Harvest Assembly at St Silas church
16th October	Super Learning Day "Healthy Body, Healthy Mind"
17th October	School Closes for half term
28th October	School re-opens

## Twitter X



Please follow our Twitter account. <http://twitter.com/> to keep up to date with events in our school.

Website - please copy this link into your browser

<https://www.stsilasprimary.co.uk/>

## Instagram



St Silas now has an Instagram account. Please follow us on:  
<https://www.instagram.com/stsilasblackburn/>



**Loving God and each other, we work together to be the best that we can be.**