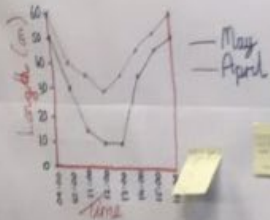


Learning Theme: Statistics.

Interpreting Line Graphs



What does this line graph show?
 Suggest a title...
 What sort of data is being displayed?
 True or false... the sun is higher in the sky in May than in April. Explain...

Reading Timetables

Bus Timetable

Bus Station	11:30	12:30	13:30	14:30
School	11:37	12:37	13:37	14:37
Swimming Pool	12:03	13:03	14:03	15:03
Health Centre	12:20	13:20	14:20	15:20
Library	12:35	13:35	14:35	15:35

Make some interpretations.

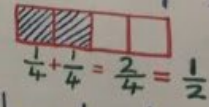
Vocabulary

- Bar chart
- Pictogram
- Frequency
- Tally
- Discrete data
- Continuous data
- Line graph
- Sum
- Comparison
- Interpret

Current Arithmetic Target...

X and ÷ of fractions.

$$1. 2 \times \frac{1}{4} = \frac{2}{1} \times \frac{1}{4} = \frac{2}{4} = \frac{1}{2}$$



$$2. \frac{1}{2} \div 4 = \frac{1}{2} \div \frac{4}{1} = \frac{1}{2} \times \frac{1}{4} = \frac{1}{8}$$

Reciprocal