

St Teresa's Catholic
Primary School
Welcome to Reception



Welcome

We are delighted that you have chosen us to start your child's primary education journey. St Teresa's is a Catholic school and very much values every member of our school family. We work hard to celebrate the differences and unique talents of all of our family. Our mission statement underpins all that we do.

St Teresa's Catholic Primary School



Our Mission Statement

To create confident and independent learners who have the skills and knowledge needed to be the best that they can be and who serve each other in a loving Catholic community.

To achieve this we will:

strive to do the little things well like St. Teresa.

value ourselves and one another.

reach out to others.

accept and forgive.

worship together.



“Let us do the little things well today.”

St. Teresa of Lisieux

St Teresa's is part of Bishop Hogarth Catholic Education Trust, a multi academy trust of 35 Catholic primary and secondary schools. Mr Mike Shorten is our CEO. As a Trust we have shared virtues that we aim to live out in our daily lives. The Virtues that we share as part of Bishop Hogarth Catholic Education Trust are; respect, responsibility, resilience, self-belief, compassion, confidence, justice and honesty. We teach these virtues at St Teresa's so that they become a habit, in the same way that we teach our school rules, they become a second nature to our children. These virtues are common across all of the schools in our Trust and simply become 'the way we behave'. By being very clear to our children about the reasons that we act out these virtues, we hope to build a community based on our common virtues that are all firmly grounded in our Catholic faith. Virtues build ethos, our ethos is what makes our school unique to us.



St Teresa's has its own Senior Leadership Team comprising of:


- Mrs Paula Strachan – Head Teacher
- Mrs Fiona Lindsay – Deputy Head Teacher and SENCO
- Mrs Helen Glenton – Leadership Team
- Mr Stephen Parker – Leadership Team

All of the above are Designated Safeguarding Leads, if you have a concern about the safety or welfare of any child, please speak to a member of our senior leadership team. We all wear yellow safeguarding lanyards to enable easy identification.

Our Reception Class Team are:

- Mrs Clare Thornborough – Teacher
- Miss Kathryn Gibson - Teacher
- Mrs Joanne Tinkler – Teaching Assistant
- Mrs Malgorzata Wieczorek – Teaching Assistant

The School Day

| | | |
|---------|---|---|
| 8.45am | School begins - please bring your child to the Key Stage 1 yard. Children enter reception through the Foundation Stage outdoor area gates. Self-Registration / Busy work – combination of adult directed and child-initiated learning. |  |
| 11:30am | Lunchtime | |
| 12:30pm | Self Registration / Busy work – combination of adult directed and child-initiated learning. | |
| 3:15pm | Home time - your child will be dismissed through the Foundation Stage outdoor area gates. Children will be handed over to an adult by a member of staff – You must inform the school office if the children are to be collected by people who are not listed on the registration form. | |

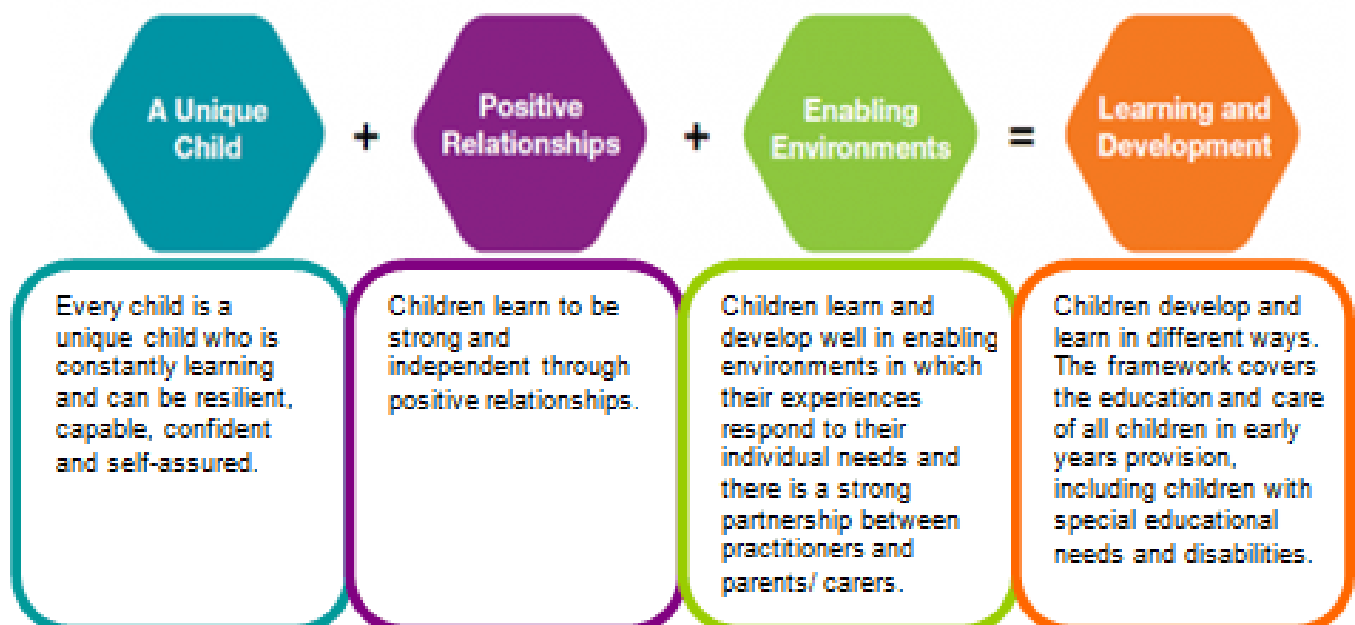
Snack time – Available all day – Healthy snack and water/milk

The Principles of the Foundation Stage

At St Teresa's Catholic Primary School, we strongly believe that children in the Early Years learn best through first-hand experience and structured play activities. To your child, play is their 'work' and we value it as such.

The Early Years Foundation Stage (EYFS) is based upon four themes, each of which is linked to an important principle:

- A Unique Child
 - Every child is a competent learner from birth who can be resilient, capable, confident and self-assured.
- Positive Relationships
 - Children learn to be strong and independent from a base of loving and secure relationships with parents and /or a key person.
- Enabling Environments
 - The environment plays a key role in supporting and extending children's development and learning.
- Learning & Development
 - Children develop and learn in different ways and at different rates and all areas of learning and development are equally important and interlinked.



There are 7 areas of learning and development:

Prime Areas

Communication and Language

Physical Development

Personal, Social and Emotional Development

Specific Areas

Literacy

Mathematics

Understanding the World

Expressive Arts and Design

They are all delivered through planned, purposeful play opportunities with a careful balance between adult-led and child-initiated activity.

What does this mean to you?

- Much emphasis is given to the Personal, Social and Emotional Development particularly during the first term. Children need to feel happy, safe, secure and valued to ensure progress in all areas of learning. Priority is given to forming good relationships with peers and adults, discovering their new setting and settling into routines.
- Activities are based upon what children already know. Building upon these foundations established through careful early and continual assessment ensures success.
- Once children have developed a strong self-confidence their learning rapidly progresses and they will be stretched and challenged appropriately.
- Activities are practical, hands on and most importantly engaging.
- There will be a variety of structured play activities to choose from as well as focused activities led by adults.
- Children are encouraged to make their own choices and decisions and to initiate their own activities, developing into creative, independent learners.
- They are given time to become engrossed in activities they are particularly interested in and opportunities to move on when ready.
- As their concentration span develops they will be encouraged to spend more time at a single, focused activity.

How we do it?

- You will receive a curriculum overview each term showing the terms activities so that you will be able to support at home and encourage your child to bring in relevant items linked to the topic.
- Physical Development is supported through weekly group PE lessons.
- The children also experience whole class music sessions and will also take part in several assemblies throughout the school year.
- Children are regularly rewarded for good progress and behaviour in a variety of ways: house points, stickers, comments on work and regular verbal praise.
- Religious Education is taught in addition to the EYFS Curriculum, through the programme 'Come and See'. The children also participate in collective worship throughout the day. All children attend Mass, and our Parish Priest plays an important role.
- Assessment – through observations and focused activities your child is regularly assessed to allow teachers to plan for their next step.



Working In Partnership with Parents

We are aware that the first days at school can often be more daunting and emotional for you than your child! We believe it is very important to share information with one another about your child's achievements, targets and emotional well-being. Every effort is made to keep you in touch with your child's experiences and progress throughout these important first years.

These are the ways in which **we** do so:

- Sharing your child's achievements with you on Seesaw
- Parents Evenings
- Annual Report –Summer term
- Whole school newsletters

Ways **you** can work with us:

- Use the reading journal to tell us when you have heard your child read at home.
- Support achievements from outside e.g. swimming, football, dancing etc
- Your child will receive homework every Friday, please support them with this and return on a Tuesday.
- We have an open-door policy – any problems speak to a member of staff
- Update contact details with office as soon as any changes occur, (new address, mobile contact no etc.)
- Ensure correct uniform is worn and labelled
- Ensure prompt arrival and collection of children
- Notify us of changes in home time collections
- Contact the office if your child is going to be absent from school on 01325 380754

Our Facilities

- Our Foundation classroom leads onto an outdoor classroom area, the door is opened to provide a large free flowing space for activities. In addition, the children have their own washroom facilities and cloakroom area.
- The children make use of the other areas of the school including outdoor playground/field and the school hall.
- The classroom is bright and cheerful displaying recent topic work as well as on-going learning opportunities such as number and letter recognition work.
- Our aim is to provide an environment in which your child can develop into a creative independent learner.
- The Foundation classroom is divided into specific areas of learning which reflect the curriculum
- We have close links with St Teresa's Church and the children will regularly attend Masses there for Holy days and special days in the school calendar.
- At St Teresa's, we provide and Breakfast and After School Clubs for children from Nursery through to Year 6. Further information and forms are available at the office.

Starting school...all you need to know!

What happens at school?

- The children are split into two family groups. Their family group is simply their registration group. Each family group is designated a teacher who is your first point of contact. If your child is an elephant their teacher is Mrs Thornborough, if your child is a giraffe their teacher is Miss Gibson.
- Your child will have a named coat peg. Their book bag will be kept in their family group box. Their coats and lunchboxes are kept in the cloakroom area. You can support your child by encouraging them to become independent in following the daily routine.
- **Self-registration** – Your child is responsible to collect their name and place it on the registration board.
- **Snacks** – All children in Early Years receive a piece of fresh fruit or vegetable for their snack. You are welcome to send in an alternative piece of fruit too.
- **Toileting** – Children will always be encouraged to be as independent as possible in this area. If you have any concerns, please speak to your child's teacher.
- **Illness** – Should your child become ill during school hours we will contact you or persons named on the personal details form as soon as possible. Please do not send your child to school if they have a temperature or if they have had sickness or diarrhoea in the last 48 hours.
- **Accidents** – Cuts, bumps and bruises are treated with a cold compress, ice pack, or plaster, if necessary, as well as plenty of TLC. In the case of a serious accident you will be contacted immediately. There will always be a paediatric first aider available who will take responsibility until you arrive at school. If your child has received a heavy bump to the head, you will be informed of the circumstances by the teacher at the end of the school day or by a phone call.



What you need to provide or do:

- **Hot dinners** – All children in Foundation are entitled to a free school meal. Our cook, provides a range of delicious meals that the children all enjoy. An example of the menu is enclosed in your pack.
- **Packed lunches** – If you would prefer to provide your child's lunch we ask you to support our 'healthy eating' policy and provide a balanced lunch. Please do not include food containing nuts or packets of sweets, chocolate bars or fizzy drinks. Chocolate biscuits, cakes and crisps are acceptable although we do encourage fruit and yoghurt as sweet alternatives. Please also include a still drink.
- **Water** – Children have access to fresh drinking water throughout the day. Please send your child into school with their own labelled water bottle on a daily basis. This will be sent home again at the end of each school day.
- **Healthy Snacks** – Fresh fruit is provided on a daily basis. Please let staff know if your child has any food allergies or special dietary requirements.
- **Book Bags** – Please send in your child's book bag every day, as it will contain their reading book and information will be sent home in your child's bag.
- **PE** – On your child's designated PE day, please send your child into school wearing their PE kit. (White t-shirt, black or jogging bottoms/shorts and trainers, which they can fasten themselves.)
- **Naming uniform** – Please ensure your child's clothes are clearly named, especially jumpers and cardigans.



- **Coats** – Please bring a **named** waterproof coat everyday unless the forecast is very hot. The children have outdoor play and activities every day. Please also provide **named** hats and gloves for the winter, and a **named** cap or sunhat for the summer, children will not be able to play outside without a hat in the summer months.
- **Wellies** – Children need a **named** pair of wellies to enable them to access the outside area. These are to be left in school for everyday use.
- **Medication** – If your child is prescribed regular medication by a G.P. please note this on their personal details form and discuss with your child's teacher. We can only administer medication that has been prescribed to be taken four or more times a day. This does not include asthma medication.



Finally....

We hope your child will be excited and motivated by all the opportunities presented to them and become an active member of our school family. We hope that you will relish this journey with us.