

What's happening in the news this week?



Let's have a look at this week's poster!

16th - 22nd December 2024



**How can we show others
we care?**



Let's look at this week's story

It is thought the number of cards sent this festive period will be lower than in previous years, as stamp prices have increased. The price of a first-class stamp rose by 30p in October, to £1.65. This rise (the fifth increase in less than three years) has also led to fears that the money reaching charities through card sales will be lower this year.



Learn more about this week's story [here](#).
Watch this week's useful video [here](#).
This week's Virtual Picture News [here](#).



How does it make me feel?



sad

despondent
disconsolate
dismal
doleful
downhearted
forlorn
gloomy
melancholic
miserable
woeful
wretched

angry

aggrieved
annoyed
discontented
disgruntled
distressed
exasperated
frustrated
indignant
offended
outraged
resentful
vexed

happy

beaming
buoyant
cheery
contented
delighted
enraptured
gleeful
glowing
joyful

confused

addled
baffled
bemused
bewildered
disorientated
indistinct
muddled
mystified
perplexed
puzzled

excited

animated
elevated
enlivened
enthusiastic
exhilarated
exuberant
thrilled

worried

agitated
anxious
apprehensive
concerned
disquieted
distraught
distressed
disturbed
fretful
perturbed
troubled
uneasy

overwhelmed

engulfed
inundated
overburdened
overloaded
saturated
submerged
swamped

afraid

alarmed
apprehensive
daunted
fearful
frantic
horrified
petrified
terrified

guilty

ashamed
compunctious
contrite
culpable
penitent
responsible
rueful

jealous

bitter
covetous
desirous
envious
envying
resentful
wary

thankful

appreciative
grateful
gratified
indebted
obliged
relieved

shocked

astonished
astounded
disconcerted
distressed
dumbfounded
horrified
staggered
startled
stunned
surprised

disgusted

affronted
appalled
horrified
repelled
repulsed
revolted
sickened

inspired

activated
encouraged
exhilarated
galvanised
influenced
motivated

embarrassed

ashamed
awkward
chagrined
demeaned
discomposd
humiliated
self-conscious
uncomfortable
uneasy
unsettled

interested

absorbed
captivated
curious
engaged
enthralled
fascinated
gripped
intrigued
riveted

This week's story looks at events related to ...





Read the information found below about sending cards. Share your thoughts on how you think card sending may change in the future.

When did people start sending cards?

Shop-bought cards first appeared nearly 200 years ago. Sending them to friends and family in November and December has been an annual ritual for many people in the UK and other parts of the world.

Since the price of stamps is continuing to increase, fewer people are sending them each year.

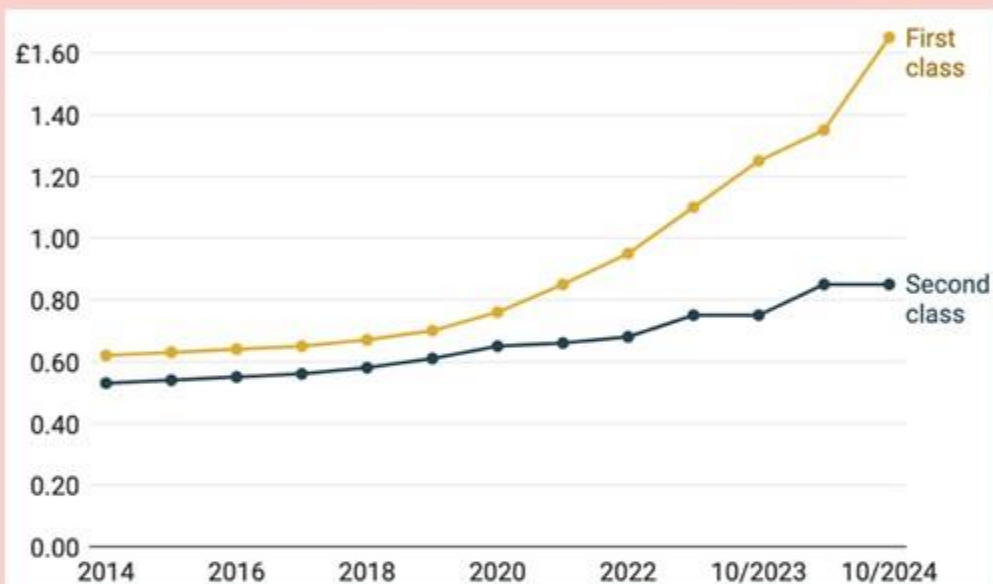


Source:
Wikimedia
Commons.

Pictured above: What's thought to be the first-ever printed and posted card from 1843.

A well-known educator and inventor, called Sir Henry Cole, received many messages from friends during the festive period. As he didn't have time to respond to them all, he asked a friend to design a card so that he could produce, personalise and send the cards as replies.

How has the price of stamps changed over time?



Source: Royal Mail.

How do people send cards?

In 2023, Royal Mail estimated around 150 million Christmas cards were delivered by them.

Though not all cards are posted, some are hand delivered, including those sent to neighbours or friends who live nearby. It is thought people are now choosing to send fewer cards but are making the ones they do send extra special.





Look at the scenarios below, which show special times when we might choose to give a card.



Have you ever sent a card for someone's birthday?
Why is it nice to receive a card on your birthday?

Do you send cards at Christmas? Why do people send greetings during the holidays?

Why might someone send a card during a sad time?
How does it help to know someone cares?

Why do people send cards to say thank you?
When have you said thank you with a card?





Look at the resource below, which shares some information about ways people communicate that they care, now and in the past.

Royal Mail

Royal Mail was founded in 1516. Prior to this, there was no official postal service in the UK and people would often pay someone to deliver their letters.



Telephone

The telephone was invented in the 1870s. One hundred years later, 35% of households in the UK had a telephone. By 1990, 87% of UK households had a telephone.



Moonpig

In 2000, the UK's first online card retailer, Moonpig, launched. Since then, it has included gifting, flowers, off-the-shelf gifts and balloons in its range.

From 2018 onwards, the group has transformed itself into the world's leading technology and data platform for gifting. It offers AI-generated greeting card messages, the ability to add personalised video and audio messages to cards, and the ability to send group cards containing messages from more than one person.



Have you ever used any of these ways to show someone you care?



**How can we show others
we care?**

Reflection



Sending cards to people we care about is one of many ways we can let them know we are thinking of them. Cards can also be used to send greetings or messages during a special time.





Rule of Law

Royal Mail provides rules and guidance so people can send cards successfully. These include adding an address and stamp to the card. If these rules are not followed, there are consequences, which may lead to the card not being delivered or the recipient having to pay.

Protected Characteristics



Some people send cards to celebrate events as part of their religion or belief. Nobody should be treated unfairly because of their religion or belief.



Sex



Sexual
Orientation



Age



Disability



Gender
Reassignment



Marriage and
Civil Partnership



Pregnancy
and Maternity



Race



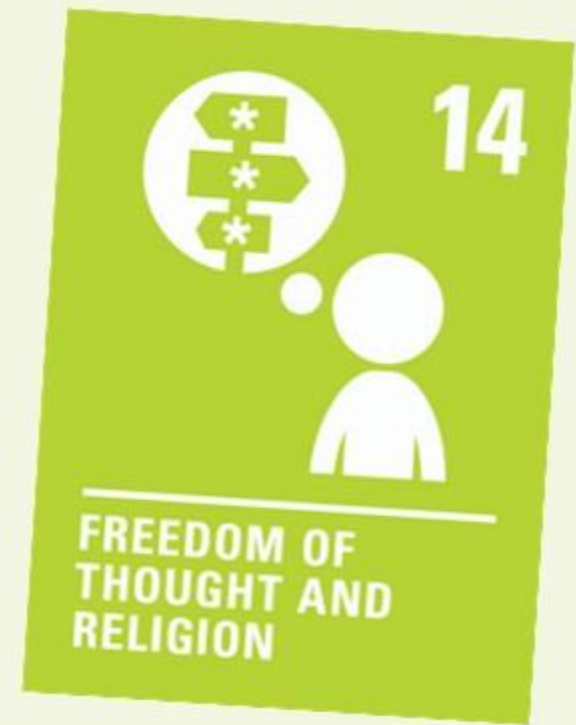
Religion
or Belief



UN Rights of the Child



We can choose our own thoughts, opinions and religion. These may impact if and how we choose to celebrate Christmas.



Useful Vocabulary



Estimate

To make an informed or careful guess about a number or amount.

In 2023, Royal Mail **estimated** around 150 million Christmas cards were delivered

Festive

Something special, fun, or cheerful, usually linked to holidays or celebrations.

It is thought the number of cards sent this **festive** period will be lower than in previous years.

Fifth

One that is number five in a series or sequence.

This rise (the **fifth** increase in less than three years) has also led to fears that the money reaching charities through card sales will be lower this year.

Ritual

Something people do the same way every year or at a special time.

Sending them to friends and family in November and December has been an annual **ritual** for many people in the UK and other parts of the world.

Stamp

A small sticker used on letters and cards to pay for them to be delivered.

The price of a first-class **stamp** rose by 30p in October, to £1.65.

Tradition

Something people have done for a long time, passed down from one generation to another.

Watch this week's useful video which explains more about the **tradition** of sending cards.

Can you use them in your writing this week?

Collective Worship



Bible Link: 2 Corinthians 9:7

Christian Value: Love

Theme: Christmas Cards



Pupil talk

- Share your experiences of giving and receiving Christmas cards. Who do you send them to/receive them from? What messages have you shared in cards?
- How does it feel to send/receive a Christmas card?
- Why do you believe people send Christmas cards? Can you think of an alternative to sending them?
- How do you show love to others?

Think

It is thought the number of cards sent this festive period will be lower than in previous years, as stamp prices have increased. The price of a first-class stamp rose by 30p in October, to £1.65. This rise (the fifth increase in less than three years) has also led to fears that the money reaching charities through card sales will be lower this year.

God showed us how much he loves us by sending His son, Jesus. We celebrate the birth of Jesus at this time of year. Jesus' whole life teaches us how to live, including caring for and loving others.

Invitation prayer

Dear God,
Thank you for the excitement and joy Christmas brings,
Help us to remember it began with the birth of Baby Jesus,
Thank you for your love,
Help us to share love with others this Christmas,
Amen

Key stage 1 class discussion

- Discuss some of the greetings and messages you might find in a Christmas card, e.g., 'Happy Christmas', 'Sending peace, love and joy', 'Season's greetings'.
- Think about some of the people in your community, who might not receive these special messages at this time. Can you make a Christmas card for them?

Key stage 2 class discussion

- What does Christmas mean to you? How do you celebrate Christmas? Do you have any Christmas traditions? What do you value most about Christmas?
- How will you share love in school, in your homes and in your communities this Christmas?

Worship song

We Wish You a Merry Christmas



God



Creation



Fall



People of God



Incarnation



Gospel



Salvation



Kingdom of God

Picture News



How can we show others we care?

It is thought the number of cards sent this festive period will be lower than in previous years, as stamp prices have increased. The price of a first-class stamp rose by 30p in October, to £1.65. This rise (the fifth increase in less than three years) has also led to fears that the money reaching charities through card sales will be lower this year.



- Look at this week's poster and talk about what you imagine this week's story could be about.
- Can you think of the different occasions when people send and receive cards?
- Read the information found on the assembly resource about sending cards. Share your thoughts on how you believe card sending may change in the future.
- Discuss the impact sending fewer cards may have on charities. Can you think of anything or anyone else that could be affected?
- Watch this week's useful video, which explains more about the tradition of sending cards. Share your experiences of receiving and giving cards. Talk about how it feels to receive a card.
- Can you come up with any other ways you can show others you care? What actions or words show you that someone cares about you?
- Do you think that there are different ways to show you care, for those living close to you and those who live far away?

Reflection

Sending cards to people we care about is one of many ways we can let them know we are thinking of them. Cards can also be used to send greetings or messages during a special time.

Picture News



KS1 focus

What other occasions do we send cards for?



- Can you see the postbox on this week's poster? Does it look different or special in any way? What is a postbox used for? Have you used one before?
- Have you ever received a card? What was the occasion? Did it have a picture or a message? How did it feel to receive your card?
- What other special times do you think people send cards? Share your ideas with the people around you and begin making a class list.
- Look at resource 1, which shows some occasions when you might send a card. Look at each picture one by one. Think about what is happening and why you might send a card in these situations. You might like to add these to your list.
- What are some of the different reasons for sending cards? Do cards only carry happy messages, or can they be given during sad times?
- Can you think of other things people might do to show they care (e.g., giving a hug, saying kind words, helping with something)?
- Can you think of other ways people can send greetings, even if they don't send a card? How about a phone call or a message? Can these other greetings be just as meaningful?

Reflection

Cards carry special messages that show we care, celebrate, or support each other. Cards offer a meaningful way to show others that we are thinking of them.

Picture News



KS2 focus

How do you think showing others we care could change in the future?



- Make a list of ways you show other people you care e.g., a hug, telling them, helping them with a job, buying them a gift, a smile. How do you prefer to show you care? Has anyone ever written a message or sent a card to show they care for you?
- The ways people can communicate their care for others have changed over time. Discuss why this might be. Consider the impact advances in technology, society and cost may have.
- Look at resource 2, which shares some information about ways people communicate that they care, now and in the past. Have you ever used any of these ways to show someone you care?
- Moonpig was the first UK online card retailer. Have you ever given or received a card from an online retailer? The group now offers AI-generated cards and the ability to add personalised video and audio messages to cards. Do you think a personalised card shows someone you care more? How do you feel about artificial intelligence being used to generate cards?
- Think about the future. How might the ways we communicate we care change? What role do you believe technology will play in this? Do you think these changes will be for the better?
- The sending of cards can be traced back to ancient times. Do you imagine a point in the future when they will no longer be sent?

Reflection

It is likely the ways we communicate we care will continue to evolve and change as we move into the future. However, some have and could continue to stand the test of time!

Picture News



KS2 follow-up ideas

Option 1

During the festive period, many people send cards.

- Do you send and receive cards?
- Do you have any other traditions for this time of year?
- Do you know of any other Christmas traditions from around the world?

Select one country and read and research to find out if and how they celebrate Christmas. If they don't, explore a different event that is celebrated nationally. Think about:

- Are there any special meals or foods eaten?
- Are cards sent? If so, what greetings are put in them?
- Is there a bank holiday or time given off work/school?
- Are there decorations or special objects?
- What other traditions are observed?

Share your findings with each other to learn more about people living in our world!

Option 2

The way some people send cards has changed. Cards can be sent electronically with personalised video or audio messages. Use this opportunity to use digital technology to create and send your own greeting or message to someone. Think about:

- How will you create your message? An animation, a video?
- Who will you send it to?
- What message will you share?
- Can you jot some ideas or notes, or create a storyboard to help you plan your work?

Picture News



KS1 follow-up ideas

Option 1

Set up a small post office role play area in the classroom – you might like to make it Christmas themed! To send a card or letter, you need to buy a stamp. Stamps come in different types and each costs a different amount. Provide a variety of stamps with different values, along with toy (or real) money. Can you make the different values using the coins?

- First-class stamp: £1.65
- Second-class stamp: 85p
- Can you make the same amount in different ways?
- How much would three stamps cost?
- If you paid £2, how much change would you get?

Option 2

It's easy to admire or think fondly of someone without taking the chance to tell them. Think about someone you'd like to send a special message to. Maybe you enjoyed playing with them at playtime, noticed them doing something well, or simply want to show you care. Write your thoughtful message, and if you like, design and make a card to hold it. Once it's ready, give it to the person you're thinking of – you're sure to brighten their day!

Picture News



This week's useful websites

This week's news story

www.express.co.uk/news/uk/1978801/Stamps-christmas-cards-cost

This week's useful video

History of card sending
www.youtube.com/watch?v=eDml2EBWTh0

This week's Virtual Picture News

www.picture-news.co.uk/discuss

This week's vocabulary

Estimate

To make an informed or careful guess about a number or amount.

In 2023, Royal Mail **estimated** around 150 million Christmas cards were delivered.

Festive

Something special, fun, or cheerful, usually linked to holidays or celebrations.

It is thought the number of cards sent this **festive** period will be lower than in previous years.

Fifth

One that is number five in a series or sequence.

This rise (the **fifth** increase in less than three years) has also led to fears that the money reaching charities through card sales will be lower this year.

Ritual

Something people do the same way every year or at a special time.

Sending them to friends and family in November and December has been an annual **ritual** for many people in the UK and in other parts of the world.

Stamp

A small sticker used on letters and cards to pay for them to be delivered.

The price of a first-class **stamp** rose by 30p in October, to £1.65.

Tradition

Something people have done for a long time, passed down from one generation to another.

Watch this week's useful video which explains more about the **tradition** of sending cards.

Brush Business!

Two sisters from Wales have turned their tiny garage into a big beauty business! Sophie and Hannah started Spectrum Collections, a company making colourful make-up brushes, ten years ago. After working with hair and makeup artists backstage, they saw a gap in the market for fun yet high-quality and affordable brushes. Now, their products are used by famous artists, who work behind the scenes in TV, music and fashion! The sisters have also created special brush sets inspired by Disney favourites like *Winnie the Pooh* and *Cinderella*. Their brushes are vegan and cruelty-free, meaning no animals are used

to make them. The business, still based in Barry, Wales, is growing fast, with sales booming in the UK and the US. The sisters say working together is what makes it all so special.

What's your dream business idea?



Pictured: Spectrum's Minnie Mouse collection.
Source: @Spectrumbrushes on X.

A Team Effort

A huge snowstorm hit parts of the US over the Thanksgiving holiday weekend, with some places getting over three feet of snow! In Buffalo, New York, people grabbed shovels to help the Buffalo Bills American football team clear their stadium before a big game. Governor, Kathy Hochul, said, 'The snow is heavy, but New Yorkers are tougher!' Snowstorms like this are known as lake-effect snowfall; they happen when cold air blows over the Great Lakes, creating fluffy snow. Some areas can see up to six feet of



Pictured: American football fans work together to clear snow from the Highmark Stadium in Buffalo. **Source:** @BuffaloBills on X.

snow in a week! The snow caused roads to close, making it hard for people travelling after Thanksgiving. Many worked together to shovel snow and keep their towns moving.

What does it mean to feel included?



To feel included you mostly feel loved and that people want you to play.

Eloise

Let us know what you think about this week's news



picture-news.co.uk/discuss



help@picture-news.co.uk



[@HelpPicture](https://twitter.com/HelpPicture)

Knitty Gritty

Goldie the Gritter has been spreading joy around the UK in her fabulous new knitted jumper! Econ Engineering worked with award-winning knitting group, Ripon Community Poppy Project in North Yorkshire, to create a giant Christmas jumper and Santa hat for Goldie to wear! She is visiting schools around the country, to help pupils learn about road maintenance and winter safety. The jumper was created by 35 volunteers, and took a total of 4,500 hours to knit from 1,130 balls of wool! Stuart Martin, Ripon Community Poppy



Pictured: Goldie the Gritter dressed in her knitted jumper, and with children from Outwood Primary Academy Greystones. **Source:** Outwood Primary Academy Greystone @OPA_Greystone on X.

Project chairperson, said, 'Creating this jumper and hat for Goldie the Gritter has been such a joy for our volunteers. Since we started the Ripon Community Poppy Project in 2017, our mission has been to bring our community closer together and this project has allowed us to do just that, with our dedicated and creative volunteers spending hours crafting each stitch to bring Goldie's jumper to life. It's been wonderful to see Goldie in her new outfit and we hope she brings lots of joy to the schools she visits on her tour of the UK.'

Do you know how to knit?

Would you like Goldie to visit your school?



Bumblebee Boom!

A rewilding project in Scotland is celebrating after its study showed that bumblebee numbers have increased massively! The bee population has gone up by more than 100 times. Local residents call the 90-acre field, just north of Perth, a haven for wildlife. The Bumblebee Conservation Trust say that allowing nature to take the lead in the area has enabled dozens of wildflower species to return to the field. This, in turn, has encouraged many more varieties of bee to return too! Rewilding Denmarkfield posted online to say, 'We are BUZZING! 🐝🐝🐝...In the space of just two years, the abundance of bumblebees here at Denmarkfield increased over 100-fold...From just 35 bees before we started rewilding in 2021, to fields

brimming and buzzing with life in 2023...with over 4000 bumblebees recorded! 🐝 This really showcases the resilience of nature to lead its own recovery, when we give it the time, space, and support it needs.'

Do you know any facts about bumblebees?

Do you have any ideas to help increase their numbers more?



Pictured: Bumblebee.
Source: Canva.

What does it mean to feel included?



Making people feel included can boost their confidence and show that they are loved and cared for.

Paige

Let us know what you think about this week's news



picture-news.co.uk/discuss



help@picture-news.co.uk



[@HelpPicture](https://twitter.com/HelpPicture)

TAKEHOME

16th - 22nd
December



How can we show
others we care?



In the news this week

It is thought the number of cards sent this festive period will be lower than in previous years, as stamp prices have increased. The price of a first-class stamp rose by 30p in October, to £1.65. This rise (the fifth increase in less than three years) has also led to fears that the money reaching charities through card sales will be lower this year.

Things to talk about at home ...

- Share your experience of giving and receiving cards and ask someone at home about theirs.
- Fewer cards are being sent each year; talk about why you think this is the case.
- What other ways can you think of to show loved ones that you care and are thinking of them?

Please note any interesting thoughts or comments

Share your thoughts and read the opinions of others

www.picture-news.co.uk/discuss

