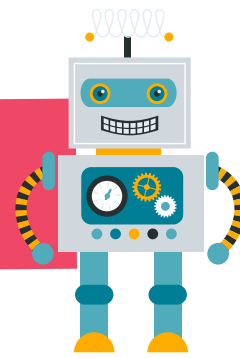


Year 1



Term:	Guidance:	Example:
exclamation mark	A punctuation mark used at the end of a sentence to show exclamations, emotion (shock, anger, surprise), or to emphasize something.	What a beautiful day! (exclamation) Help! Oh no! I hate peas! (emotion) That work is brilliant! (emphasis)
Full stop	This is a punctuation mark that is used to mark the end of a sentence.	We had lunch at the park.
Noun	This names a person, place, object, animal or idea.	girl, boy, people classroom, mosque, supermarket table, swing, pencil cat, lion, insect love, anger, kindness
Plural	To show there is more than one of something.	I saw many dogs on my walk.
Proper noun	These are names given to particular people, places or objects.	Mike, Alice, Mrs Hiller (names of people) Main Street, London, Birmingham Scotland, Africa (names of places) iPad, Bible, Lego (names of objects)
Question mark	This is a punctuation mark that goes at the end of a question sentence.	When is your birthday? Do you like chocolate? Where do you live?
Sentence	A set of words that is complete and makes sense on its own.	The duck sat on the nest.
Singular	When there is one of something.	I saw a dog on my walk.