



Welcome back to #BeeWell

We are thrilled that you are continuing to take part in #BeeWell.

This pack includes the information you'll need to prepare for the #BeeWell Survey in Autumn 2022. It is also available on our website and our team are on hand to answer any questions you may have.

Contents

<u>About #BeeWell</u>	<u>2</u>
<u>A summary of the project to share with staff and governors</u>	
<u>Achievements so far</u>	<u>4</u>
<u>A summary of our achievements to date</u>	
<u>Timeline</u>	
<u>Setting out what you need to do when and what you can expect from the #BeeWell Team over the coming months</u>	<u>5</u>
<u>What's changed since last year</u>	<u>6</u>
<u>Updated information on what has changed since last year</u>	
<u>Survey preparation checklist</u>	<u>7</u>
<u>To help your school prepare for the #BeeWell Survey</u>	
<u>The #BeeWell Survey</u>	<u>8</u>
<u>How the survey was developed and what's in it</u>	
<u>Information for parents and carers</u>	<u>9</u>
<u>How to access and send out updated information and opt-out consent forms</u>	
<u>The #BeeWell Schools' Data Hive</u>	
<u>What to expect from your individual school report and new additions to the dashboard</u>	<u>10</u>
<u>Supplementary information for non-mainstream settings</u>	<u>13</u>
<u>How delivering the #BeeWell programme differs in Special Schools, Pupil Referral Units, Alternative Provisions, and Independent Non-Mainstream Schools</u>	
<u>Most frequently asked questions</u>	<u>17</u>
<u>Funders and Partners</u>	<u>22</u>

About #BeeWell

#BeeWell is £2m collaboration between the University of Manchester, the Anna Freud Centre and the Greater Manchester Combined Authority, that combines academic expertise with youth-led change to make the wellbeing of young people everybody's business. #BeeWell surveys the wellbeing of pupils in secondary schools across Greater Manchester annually and aims to bring about positive change in Greater Manchester's communities as a result.

#BeeWell seeks to create the conditions for all our young people to thrive by:

- listening to young people's voices
- acting together for change
- celebrating young people's wellbeing

The programme builds on the Greater Manchester Life Readiness survey, and the Headstart programme funded by the National Lottery. It is funded for three years by a range of national and local funders, with a full list available [here](#).

The #BeeWell survey was co-created by 150 young people, across 15 pathfinder schools in Greater Manchester. Survey topics range from psychological wellbeing, self-esteem and autonomy to participation in arts, culture and entertainment, physical activity, safety in local neighbourhoods, and relationships with peers, parents/carers and teachers.

The #BeeWell team signed up 93% of mainstream secondary schools in Summer 2021, as well as Special Schools, Pupil Referral Units, independent schools and Alternative Provision. At least 3 in 4 schools were signed up in every local authority in Greater Manchester.

The first wave of the survey was completed by Year 8 and Year 10 pupils in Autumn 2021, with almost 40,000 young people taking part. This represents 60% of all young people in that age bracket in the city region and represents the biggest survey of its kind in the country.

Schools across Greater Manchester received their bespoke data dashboards on January 31st 2022. These dashboards provide schools with insights into the strengths and needs of their pupils, with the ability to explore trends by sex, FSM eligibility, age, and SEND status. The Anna Freud Centre are providing support in interpreting the results, with a series of webinars, action learning sets, and one-on-one sessions with participating schools that began following the release of the dashboards.

A neighbourhood-level dashboard was published the end of March 2022. This shows variation in wellbeing across different communities, as well providing insights into the key drivers of young people's wellbeing. Young people are central to shaping the key messages that emerge from the neighbourhood analysis.

Our programme aligns with the local strategic plans for Greater Manchester, supporting the city-region's integrated investment into the mental health of children and young people. It is our ambition that our annual survey becomes embedded in the decision-making processes for young people across Greater Manchester. #BeeWell is inspiring a national conversation about rebalancing the national education system, so that it treats wellbeing as an outcome equal and complementary to academic attainment.

What do schools say about taking part in #BeeWell?

Delivering the #BeeWell Survey...

"We had numerous emails telling us what to do. We have PowerPoints that can be given to form tutors to run through with the pupils... they were prepared for it when they when they actually sat down at the computer and did the survey."

"Really clear instructions. Information given in advance of the survey was also very easy to explain to pupils."

"The resources provided to introduce the survey and the fact that they were adaptable to the school's context meant that students and staff were both adequately prepared."



Achievements so far

Delivering the largest survey of its kind

More than 160 secondary schools delivered the #BeeWell survey in Year 1 of the programme. This represented nearly 40,000 responses and approximately 60% of all pupils in Year 8 and 10 in Greater Manchester. This is the first time in the country that so many young people and schools have participated in a place-based, co-produced exercise of this kind.

Creating world-class insights

The responses of pupils in schools across Greater Manchester have led to three dynamic data products: the #BeeWell School dashboard, the Life Readiness dashboard, and a ground-breaking neighbourhood dashboard that is the first of its kind in the country.

Securing investment into communities

More than £500,000 of investment has already been committed to go directly into Greater Manchester communities as a result of the #BeeWell survey. This represents only part of the wider investment of time and effort that more than 100 partner organisations have committed to understanding and acting on the survey findings – with schools leading the way at every stage.



Influencing national and international policy

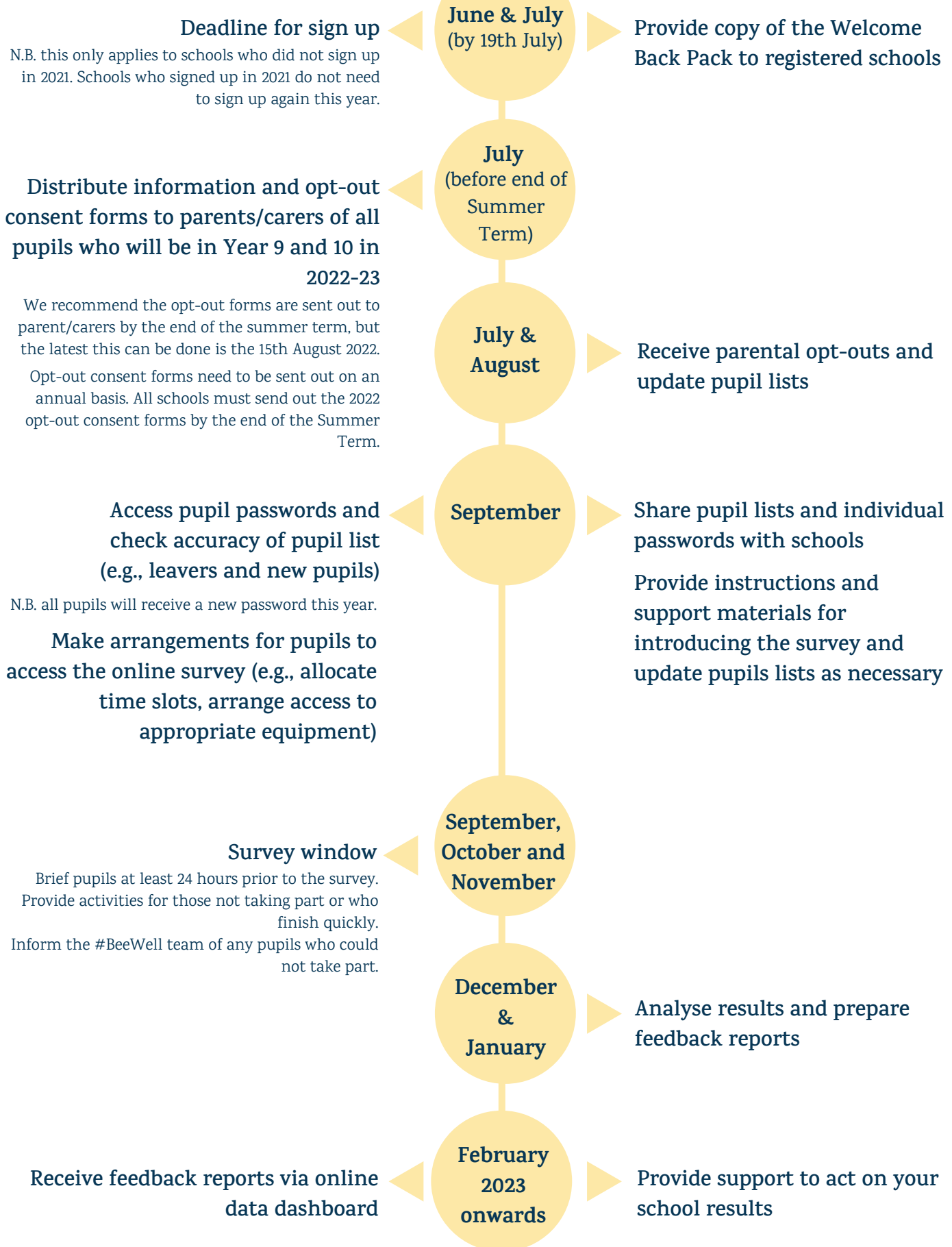
Publication of the Greater Manchester [headline findings](#) made national news, with coverage on the [BBC](#), [Radio 4's Today Programme](#), the New Statesman, the Telegraph and the Independent. With Greater Manchester yet again paving the way, #BeeWell has featured as key policy recommendations in national media outlets, think tank reports and championed by former Levelling-Up Andy Haldane

The #BeeWell methodology developed in partnership with Greater Manchester schools has now been used to develop a global wellbeing survey led by UNICEF, which will be rolled out to more than 50 countries worldwide by the end of 2022.

Timeline

Your school

#BeeWell Team



What has changed since last year?

Parent and Carer Information and Opt-Out Consent Forms

Parent and carer information and opt-out consent forms must be sent out on an annual basis. All schools are required to send out the updated information and opt-out consent forms by the end of the Summer Term, and no later than the 15th of August 2022. The information and opt-out consent forms can be found [here](#).

N.B. These forms have been updated for the 2022-23 academic year. Please send out the updated versions, not those that you were provided with last year (2021).

Pupils who were opted-out of the survey last year will remain opted-out unless their parent or carer informs us otherwise. Parents and carers do not need to re-opt out their child.

New pupil passwords

In order to access the #BeeWell Survey last academic year, pupils were provided with a unique password. All pupils will receive NEW passwords this academic year. Schools can expect to receive the new list of pupil passwords in September 2022.

An extended survey window

Following feedback from schools, this year we will be extending the survey window for schools to complete the #BeeWell survey in the Autumn term. The survey window will begin on the 19th of September and end on the 2nd of December.

New additions to the #BeeWell Schools' Data Hive

Your school's data dashboard will be updated in 2022-2023 to allow you to view longitudinal data for the pupils in Year 9 (who also completed surveys last year, when they were in Year 8). Using this, you can view trends over time in the different domains and drivers of wellbeing. As with the first round of data, you can filter through by year group, sex, FSM eligibility, and special educational needs. Examples of what the longitudinal data will look like are available on [page 12](#).

For Pupil Referral Units and Alternative Provisions only: Additional support

For the 2022/23 academic year, we are pleased to share that further resources and adaptations will be put in place to support delivery of the #BeeWell Survey in PRUs and APs. Please see [page 16](#) for further information.



Survey preparation checklist

Remember to:

- ☐ Timetable completion time for all pupils
- ☐ Ensure appropriate IT equipment will be available
- ☐ Check that the survey site is accessible on school devices
- ☐ Share guidance materials with all staff who will be supporting survey completion
- ☐ Plan activities for those that aren't taking part or who finish quickly
- ☐ Make preparations to support pupils with additional needs
- ☐ Brief the pupils (at least 24 hours before the survey)

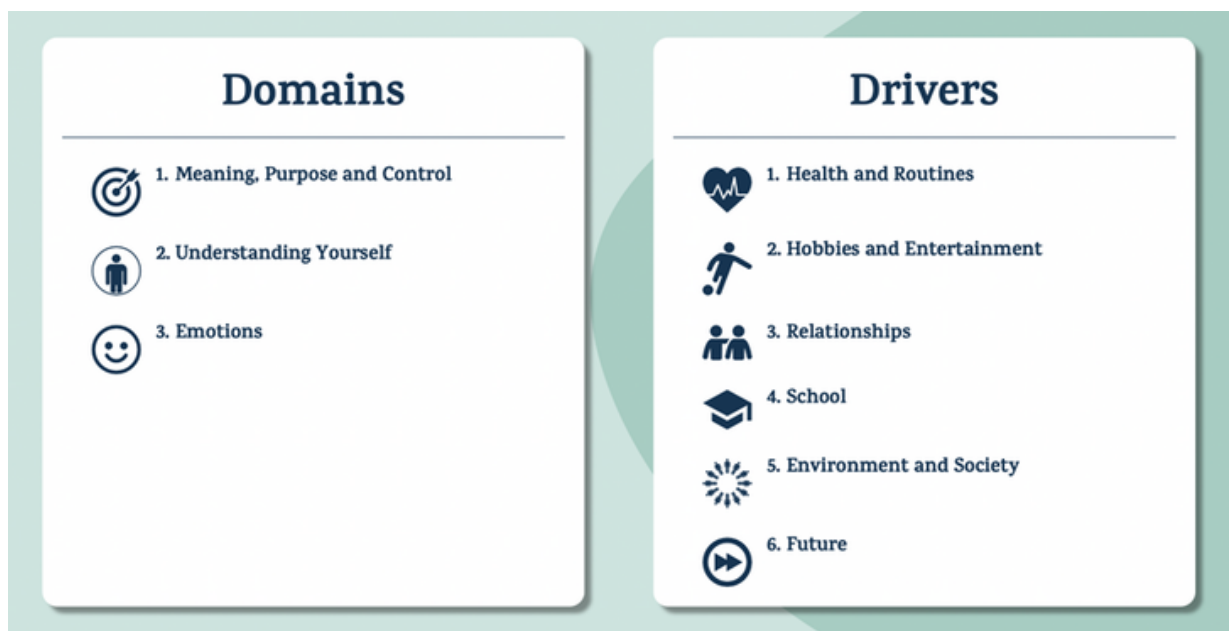
The #BeeWell Survey

Over the course of 5 months, more than 150 young people were engaged in a series of workshops across Greater Manchester to understand what wellbeing means to young people, what factors influence their wellbeing, and what makes them thrive.

These workshops, conducted in 15 Pathfinder schools, were combined with inputs from a Questionnaire Advisory Group of mental health professionals, healthcare representatives, education experts, parents, teachers, and young people, amongst others, to inform the themes covered by the survey.

With young peoples' perspectives integral to our approach, #BeeWell has utilised an alliance of school workshops, professional knowledge and academic literature to develop an effective tool for monitoring and assessing the wellbeing of young people and the factors that influence their wellbeing.

The #BeeWell Survey is divided into two sections that together encompass the different aspects of wellbeing that matter most to young people. These are the Domains of Wellbeing and the Drivers of Wellbeing.



The survey consists of 115 items. A PDF of the complete #BeeWell Survey is available [here](#).



Information for parents and carers

The Parent and Carer Information Sheet and Opt-Out Consent forms need to be sent out to the parents and carers of all pupils who will be in Year 9 and Year 10 in the academic year 2022-2023 before the end of the Summer Term 2022, and no later than Monday 15th August 2022. Parent/carers information and opt-out consent forms must be sent out on an annual basis. These forms have been updated for the 2022-23 academic year. Please send out the updated versions, not the consent forms you were provided with last year (2021). Schools cannot participate in the #BeeWell Survey without having sent out the information in time.

The updated Parent and Carer Information Sheet and Opt-Out Consent forms can be found on our website [here](#). We have made this form available in English and six other commonly spoken community languages: Urdu, Arabic, Polish, Panjabi, Gujarati and Bengali.

The information can be sent to parents and carers either electronically or as hard-copy. If parents and carers don't want their child to take part, they can 'opt-out' by returning the consent forms to the #BeeWell Team.

[Access the updated Parent and Carer Information Sheet and Opt-Out Consent Forms here](#)

The #BeeWell Schools'

Data Hive

Schools with more than 10 responses to the standard version of our survey receive bespoke, aggregated feedback via our dynamic online dashboard. The dashboard draws on data from across Greater Manchester (more than 140 schools and nearly 38,000 young people in 2021) to provide a context in which you can understand your school's aggregated scores. The dashboard includes:

- Signposting of results for your school's 'statistical neighbours' (other schools with similar profiles of size, free school meal eligibility, and ethnic diversity; or, in the case of non-mainstream schools, other non-mainstream schools) to aid interpretation
- Use of both intuitive data visualisations (such as stacked bar charts and funnel plots) and data tables
- The ability to EXPLORE data trends at different levels of granularity (e.g. year group, sex, free school meal eligibility, special educational needs, and combinations thereof) using our FILTER tool
- The ability to COMPARE, side by side, the scores of different groups (e.g. boys vs girls, year groups) for some measures

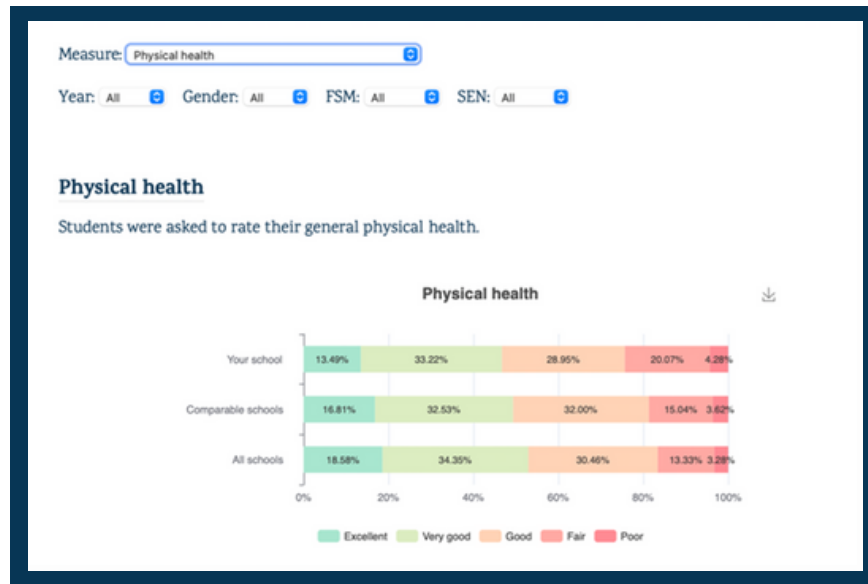
Independent feedback gathered by our evaluation partner, Renaisi, indicated that #BeeWell schools found the dashboard easy to navigate and use to understand their survey results. Examples of the ways in which schools planned to use their survey data include: revamping pastoral support; publishing results more widely; targeting interventions towards low-scoring cohorts (e.g. those with SEND, boys, year groups, et cetera); informing the curriculum; and, using as the basis for further research.

"That one-to-one [meeting with BeeWell staff] completely made it super easy to, to then understand it."

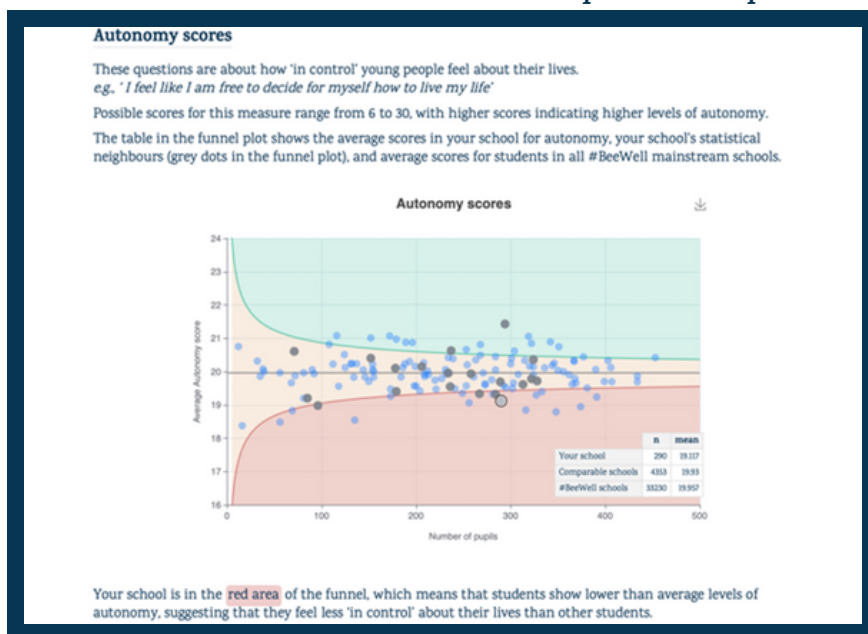
"If I've ever emailed them [BeeWell] and asked them for something they have provided it and they've been really supportive... They were giving you ways that you could kind of read the data and support around that."



#BeeWell Schools' Data Hive example: stacked bar chart



#BeeWell Schools' Data Hive example: funnel plot



"I would say to other schools, do it, it's a piece of cake and what you get from the other side in terms of the data and the reports and everything, it's a gift really to a school in terms of feeding policy and stuff like that."

"I think it's it is a worthwhile thing. The data that's been collected is important. It's important that all schools do work try and work together because we all have kids, no matter what their background, they have similar issues. And it's important to collect data on what these issues are."

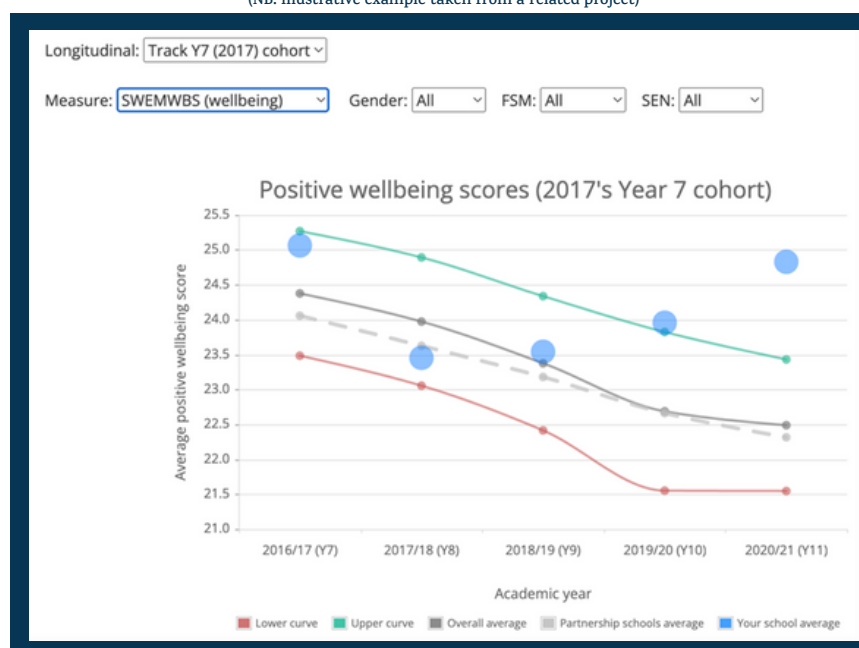
New additions to the dashboard

Your data dashboard will be updated in 2022-2023 to allow you to view longitudinal data for the pupils in Year 9 (who also completed surveys last year, when they were in Year 8). Using this, you can view trends over time in the different domains and drivers of wellbeing. As with the first round of data, you can filter through by year group, sex, FSM eligibility, and special educational needs.

The dashboard with longitudinal data will look similar to the illustrative figure below, and will enable you to determine whether any changes in scores over time for your pupils are within or beyond the level of change we would expect to see (denoted by the lower and upper curves):

#BeeWell Schools' Data Hive example: longitudinal plot

(NB: illustrative example taken from a related project)



"The communication is as minimal as possible, but clear as possible, and accessible... I think they've done a good job in that respect, a very, very good job."

"The data will inform our mental health strategy and allows us to identify particular trends. For example, one of the few results that was negative relates to social media use. This supports our own internal observations and will lead to further interventions through PSHE and our engagement sessions to promote even further responsible use of social media."

Supplementary information for non-mainstream settings

Information for Special Schools

Alternative versions of the #BeeWell Survey

Special schools will have access to three different versions of the #BeeWell survey:

- The Standard Survey
- The Short Survey
- The Symbol Survey

The Short and Symbol Survey were co-designed with pupils and staff in non-mainstream school settings to ensure #BeeWell remained as inclusive as possible.

The Standard Survey

The Standard Survey consists of 115 questions which assume a reading ability typical of a pupil in upper primary or lower secondary school. Most questions use a response scale or multiple-choice option, as shown below.

How happy are you with the home that you live in?

0 - very unhappy	1	2	3	4	5 - not happy or unhappy	6	7	8	9	10 - very happy
------------------	---	---	---	---	--------------------------	---	---	---	---	-----------------

Do you care for a family member who has an illness, disability, mental health condition, or drug/alcohol dependency?

Yes
No

Your Future

How 'ready for life' do you feel? How do you feel about your future? These next questions are about how you feel about the future. We know every day can feel different, so please let us know how you usually feel.

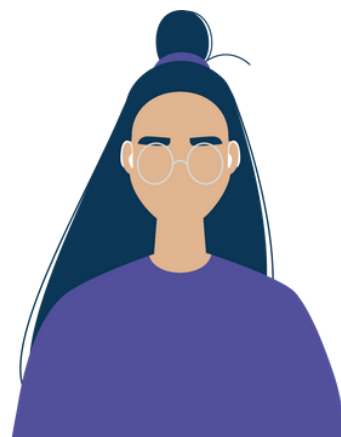
Please let us know whether you agree or disagree with the following statements (select one option per row):

	Strongly agree	Agree	Disagree	Strongly disagree
I have hope and feel optimistic about my future.	<input type="radio"/>	<input type="radio"/>	<input type="radio"/>	<input type="radio"/>
I feel that my generation will generally have a better life than my parents' generation.	<input type="radio"/>	<input type="radio"/>	<input type="radio"/>	<input type="radio"/>

The Short Survey

The Short Survey consists of a reduced number of questions (32 questions) selected from the Standard Survey, covering the following themes:

- Self-esteem
- Emotion regulation
- Positive affect
- Physical health
- Sleep
- Free time
- Participation in arts, culture, and entertainment
- Relationship with parents/carers
- Friendships and social support.





All response options use visual anchors to support accessibility and independent choices, as shown below.


Is the amount of sleep you normally get enough for you to feel awake and c school work during the day?


 Yes





 No




 Strongly agree

 Agree

 Disagree

 Strongly disagree

In general, would you say your health is:

 Excellent

 Very good

 Good

 Fair

 Poor

The Symbol Survey

The Symbol Survey was co-designed to be more accessible to young people with severe learning difficulties and/or profound and multiple learning disabilities. The survey is inspired by the [Children's Society Good Childhood Index](#). It contains 10 questions, using Widget symbols, that capture key aspects of wellbeing, and uses a simple response format (happy, okay, sad).

The questions are as follows:

- How do you feel about the things that you have?
- How do you feel about your school?
- How do you feel about how much choice you have in your life?
- How do you feel about your life?
- How do you feel about your home?
- How do you feel about your health?
- How do you feel about your friends?
- How to do feel about your free time?
- How do you feel about your family?

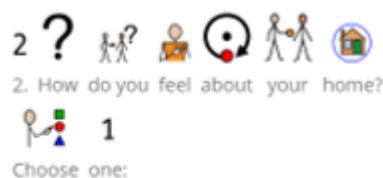


Figure 2: an example of a question in the Symbol Survey.

Further support

All versions of the survey can be completed with the support of a trusted adult, if required, and can be completed across multiple sittings.

Further support could also include:

- Reading the text to the young person
- Explaining words and concepts to help them understand (a glossary of key terms can be found in the Staff Support Pack)
- Providing breaks

Choosing the right survey

Your school can decide to use whichever of these surveys would be most accessible for an individual pupil. In other words, different pupils in the same setting can complete different versions of the survey. Each pupil will receive an individual password to access the survey. After entering the password, the young person, or supporting adult, can choose which of the three surveys they want to complete.

Feedback reports

If your pupils take part in the Short or Symbol version of the survey, your school will receive the Greater Manchester-wide headline findings reports on the results of these versions of the survey. These reports provide a breakdown of answers to each section of the survey, along with insights on how these responses differ by FSM eligibility, gender, ethnicity and year group.

If more than 10 of your pupils complete the Symbol Survey, you will receive a bespoke report, in which the headline findings are supplemented with aggregated data from your school.

If more than 10 of your pupils complete the Standard Survey, you will be able to access the #BeeWell Schools' Data Hive to view these results. (See [page 10](#) of the Welcome Back Pack for a guide to the #BeeWell school dashboard).

Information for Pupil Referral Units and Alternative Provisions

PRUs and APs have told us that getting involved in the #BeeWell Survey had previously been difficult, due to fluid pupil populations and deadlines for parent/carer opt-out forms. For the 2022/23 academic year, we are pleased to share that further resources and adaptations (see below) will be put in place to support PRUs and APs to deliver the #BeeWell survey. Pupils at PRUs and APs will also be able to access two alternate versions of the survey (the short and symbol version), dependant on what is most suitable for your pupils.

In Autumn 2022, we are not asking PRUs and APs to complete the parent/carer opt-out process in the summer term of 2021/22. Instead, you will be contacted in September by a member of the #BeeWell team, to arrange when the opt-out forms should be sent out, to organise sharing of up to date pupil lists (a data sharing agreement will be put in place in relation to this), and to schedule when your school will deliver the #BeeWell survey. Each AP/PRU will be supported by a named member of the #BeeWell team to support them through the survey process.

Information for Independent Non-Mainstream Schools

Independent non-mainstream schools will be able to access these versions of the #BeeWell Survey too, if appropriate. The #BeeWell team will also need to request an added step from independent non-mainstream schools: a data sharing agreement for your pupils eligible to take part. Your school will be contacted following the completion of your Memorandum of Agreement to arrange this step.

The #BeeWell survey is also complemented by a range of activities and programmes in which young people can get involved. We have taken steps to ensure that these opportunities are as accessible as possible and all school-types are welcome to get involved. Over the 2021/22 academic year, this has included:

- The Politics Project programme and dialogue sessions with elected representatives
- The Anna Freud Centre's targeted learning sets
- #BeeWell Young Researcher Programme
- #BeeWell social prescribing pilots: #BeeWell Champions

...and more!

Most frequently asked questions

What is #BeeWell?

#BeeWell is a three-year programme for secondary schools across Greater Manchester that focuses on young people's wellbeing, and the factors that influence their wellbeing.

#BeeWell is currently in its second year.

Who can participate in #BeeWell?

Any school or setting in Greater Manchester with secondary age students is eligible to participate in #BeeWell. Students in Years 8 and 10 were surveyed in autumn 2021. We will survey students in Years 9 and 10 in autumn 2022 and Year 10 only in autumn 2023.

What does the #BeeWell survey measure?

Following consultations with over 150 young people, the #BeeWell team arrived at domains and drivers of wellbeing that mattered most to them. The survey measures six drivers and three domains of wellbeing:

Six Drivers - Health and Routines, Hobbies and Entertainment, Relationships, School, Environment and Society, and Future

Three Domains - Meaning, Purpose and Control, Understanding Yourself, and Emotions.

The full survey, along with further information about how it was developed is available [here](#).

How do the students complete the survey?

The survey is completed online in school. Most students take between 20 and 30 minutes to complete the survey – some may complete it more quickly and some may need more time. We recommend reserving one lesson. If students do need more time to complete the survey, then they can take a break and return to the survey later.

Who has access to the data that students provide?

A research team based at the University of Manchester will have access to identifiable participant-level data. Members of the research team have been trained in Information Security and Data Governance and each have DBS checks at the Enhanced Disclosure level. The data dashboard system available to schools and Local Authorities uses aggregated data that does not allow identification of individual students' data. School level data that is available on school data dashboards is shared only with the individual school.

Most frequently asked questions

What happens after completing the surveys?

After the conclusion of a given survey window, the #BeeWell team clean and prepare the submitted data ready for the feedback reporting stage of the annual cycle. Based on current estimates, and the timeline followed in the 2021-22 survey year, we anticipate that feedback reports will be made available at the beginning of February 2023. At this time, support from the Child Outcomes Research Consortium will also be available to help schools interpret and act on their feedback reports.

Does this research have ethical approval?

Yes. #BeeWell was reviewed and approved by the University of Manchester's Research Ethics Committee (reference 2021-11133-18179).

Is the research GDPR compliant?

Yes. Please read our GDPR notice [here](#) which outlines the data we will hold, the legal basis for processing these data, how data will be stored and shared, and the rights of data subjects.

What will feedback reports for schools provide? What will data dashboards for schools provide and how are they useful?

Schools will receive bespoke, aggregated feedback reports. This will include data summaries, for example through funnel plots and bar charts, that will highlight wellbeing trends in schools. Using the online dashboard, schools can interrogate wellbeing trends at different levels of granularity (for instance by year group, sex, and free school meal eligibility) as well as over time. Examples of what the dashboard looks like are available on [page 11](#).

Following the release of the reports, the #BeeWell team will hold webinars to support schools navigate their dashboards and interpret their results.

Does the school get information from the survey for individual pupils, or for the population, or both?

Schools can access data at a population-level (and various strata of their pupil population – for example, boys and girls, and different year groups) through our online data dashboard. The aggregated information on the dashboard does not allow teachers or schools identify individual pupils' responses. All outputs in the dashboard represent at least 10 pupils (our data disclosure threshold prevents us from reporting data where there are fewer than 10 pupils, as recommended by the Office for National Statistics).

Most frequently asked questions

If the survey flagged that a child was having mental health or wellbeing difficulties, how does this link to support for young people?

The #BeeWell survey is not intended to be used as a screening tool to identify individuals in need of support, and indeed, schools will not receive feedback about individual pupils. As a result, individual survey scores will not be used as a basis for determining support for individual young people. Rather, #BeeWell uses aggregated data to flag areas of strength and difficulty across the student population (and subgroups, such as those eligible for free school meals).

Is any support offered to address whatever is highlighted by the survey?

Following the feedback reports, our partners at The Child Outcomes Research Consortium hold one-to-one support sessions with schools that address concerns highlighted in the survey data. These will be unique to your school's identified needs. In addition to this, CORC run targeted learning sets for schools, based on common trends and issues identified across schools in the survey data and in the support sessions. In the 2021-22 survey year, three targeted learning sets were created: school connection, physical activity levels, and involving pupils in conversations around survey results.

Has any provision been made for supporting children should they be adversely affected by having to consider these questions?

The surveys will signpost pupils towards sources of support they can seek out (such as parents or guardians, school staff, Childline) if they feel adversely affected. A distress protocol is provided to the school staff who are facilitating the completion of the survey. This protocol is implemented in the unlikely event that a pupil becomes distressed while completing the survey.

How was the survey developed?

The #BeeWell team engaged with more than 150 young people from Pathfinder schools across Greater Manchester in a series of workshops throughout the initial planning stages of the survey. During these workshops, young people provided invaluable insights into what wellbeing means to them, what factors influence their wellbeing, and what makes them thrive. The outcomes from the workshops were combined with inputs from a Questionnaire Advisory Group comprising of young people, academics, mental health professionals, healthcare representatives, parents, and teachers, to inform the themes covered by the survey.

Are paper copies of the pupil survey available?

No. The survey is only available via our secure, online survey platform (powered by Qualtrics). The scale of #BeeWell (tens of thousands of pupil surveys) makes paper surveys impractical in terms of logistics, cost and environmental considerations.

Most frequently asked questions

What is the staff commitment needed for completing the survey & engaging in the project?

Each participating school needs a nominated #BeeWell lead who will act as our primary point of contact and be responsible for co-ordinating project participation.

How do pupils access the survey?

Pupils access the survey online using a unique password. The list of passwords is provided to schools beforehand. The survey is accessed online on computers or tablets in schools.

How do I explain the survey to my pupils?

Schools will receive documentation with a standardised set of instructions for explaining the survey to pupils (including PowerPoint slides and a link to a brief explanatory video) in September 2022, ahead of the survey window.

How long will it take for pupils to complete the survey?

Most pupils complete the survey in 20-30 minutes – some may complete it more quickly and some may need longer. We recommend reserving one lesson, to account for additional time spent explaining the survey and other administrative steps.

Can the survey be completed on an iPad, tablet or phone?

Yes. The survey is online and so can be accessed on an iPad/tablet, or phone browser. We recommend using a desktop computer or laptop.

Can pupils stop and restart the survey?

Yes, as pupils progress through the survey, answers are saved and pupils can return to the survey at a later stage, using the same password. This requires cookies to be enabled on the device used by pupils to complete the survey. Pupils must also be logged into their own school account (e.g. a PC in the computer room) or work from their own devices. Sharing a PC without changing the user can cause problems.

Is it okay for staff to help and support pupils while they are completing the survey, in particular with regard to children for whom English is an additional language or those with a lower reading age/understanding?

Yes. We will provide a set of standardised instructions for school staff with recommendations for how pupils who require additional support can participate fully.

Do pupils have to take part?

No, parents and carers can opt out of the survey using the forms provided. Each pupil also has the option to opt out at the start of the survey. Pupils can also choose not to answer any of the questions.

Most frequently asked questions

Who will see the results for my school?

Only your school will receive access to your school's aggregated results. The responses from all pupils will be collected together, analysed and shared. Your school's results will be included in this data but staff in other schools will not be able to identify your school or any individual pupils within the data.

When is the 2022-23 survey window?

The survey will take place in the Autumn term. The survey window is 19th September to 2nd December.

When do schools have to send out parent information and consent forms?

Parent information and consent forms need to be sent out by Monday, 15th of August, 2022, in order for the #BeeWell team to receive any opt-outs by 31st August, 2022. We therefore strongly recommend that these forms are sent out well in advance of the end of the summer term 2022. Schools cannot participate in the #BeeWell survey without having sent out parent consent forms in time.

What do I do if I cannot access the survey?

You will be emailed the link to the survey in advance of the survey window opening, along with a list of individual pupil passwords. The survey link will also be available on the #BeeWell website, gmbeewell.org. We recommend #BeeWell leads test access to the survey before the beginning to implement it in class. If you are having difficulty accessing the survey, contact beewell@manchester.ac.uk.

Further guidance and FAQs will be provided in the Staff Support Pack. If you have additional questions, contact the #BeeWell team at beewell@manchester.ac.uk.





Funders and Partners

#BeeWell is funded by contributions from our supporters.

Our founding partners:

- Greater Manchester Combined Authority
- Child Outcomes Research Consortium
- The Anna Freud National Centre for Children and Families
- The Gregson Family Foundation
- The University of Manchester

Supported by seven further funders: Children in Need, Big Change, Paul Hamlyn Foundation, The Holroyd Foundation, The National Lottery Community Fund, The Oglesby Charitable Trust, and The Peter Cundill Foundation.

Our partners include:

42nd Street, Accenture, Barnado's, BeeHeard Mental Health, Bounce Forward, Bright Futures Educational Trust, The Centre for Social Justice, City in the Community, Co-operative Group, Creative Manchester, Duke of Edinburgh's Award, Education Policy Institute, England Boxing, Fair Education Alliance, FirstGive, Football Beyond Borders, Greater Manchester Youth Network, Greater Manchester Youth Combined Authority, GreaterSport, Institute for Fiscal Studies, Institute for Health Equality at UCL, Jamie's Farm, Leap, Magic Breakfast, Manchester Airport Group, Manchester United Foundation, Manchester Youth Zone, Mind, Minds Ahead, National Children's Bureau, North West Business Leadership Team, Northern Powerhouse Partnership, Nuffield Health, Place2Be, Policy@Manchester, Power2, Pro Bono Economics, Right to Succeed, SICK! Festival, Smallshaw-Hurst Children's Community, Speakers for Schools, Sported Foundation, Teach First, The Centre for Youth Impact, The Children's Society, The Conservation Volunteers, The Diana Award, The Difference, The Girls' Network, The Lily-Jo Project, The Lowry, Prince's Trust, The Scouts, The Tutor Trust, Timpson Group, Together Trust, UKactive, What Works Centre for Wellbeing, Whole Education, Young Manchester, and Youth Sport Trust.



Anna Freud
National Centre for
Children and Families





For further information

Website: gmbeewell.org

Email: beewell@manchester.ac.uk