

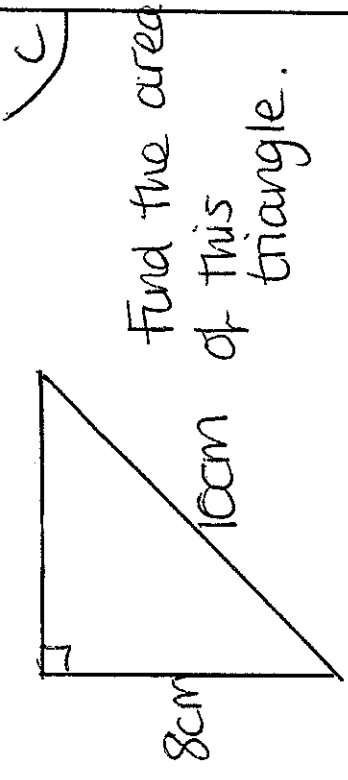
Name this shape.

Work out

$244 \times 26$

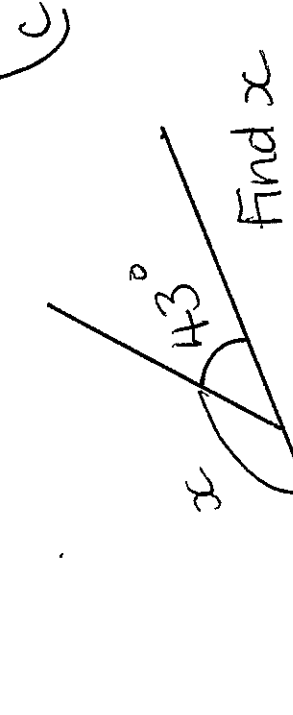
80 children went on a school trip. They went to London or York. 19 girls went to London. There were 37 boys altogether. 14 boys went to York. Fill in the two-way table.

	London	York	Total
Boys			
Girls			
Total			

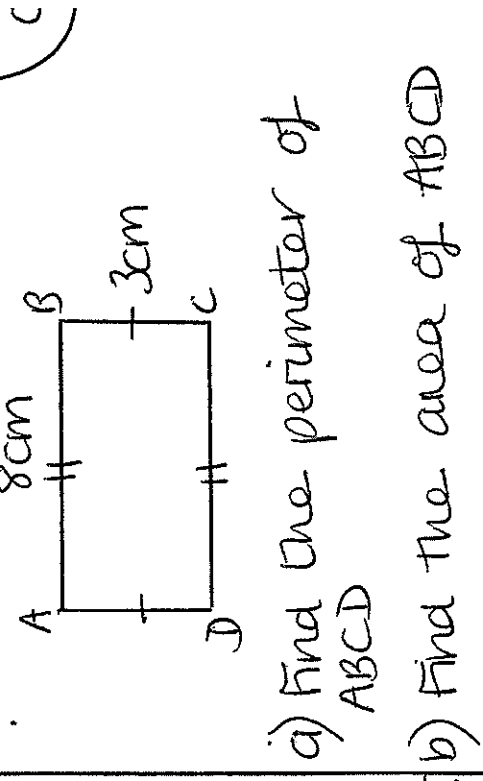


Find the area of this triangle.

- Work out
- a)  $\frac{4}{10} + \frac{1}{10}$
  - b)  $\frac{3}{7} \div \frac{1}{7}$



Find x  
Give a reason for your answer.



- a) Find the perimeter of ABCD
- b) Find the area of ABCD

Evaluate

a)  $4^4$

b)  $\sqrt{140}$

Simplify

a)  $20 : 24$

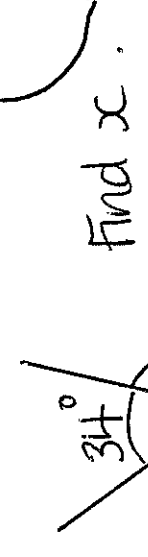
b)  $12 : 8 : 20$

Work out

$168 \div 7$

NC

The are 3 red  
2 blue  
7 green counters in a box.  
Write down the probability of a blue counter.



Find x.

What type of angle is x?

Simplify

a)  $a + a + a$

b) Expand  $6(y - 3)$

c) Solve  $3x + 2 = 14$

NC

Share £60 in the ratio 7:5