

2018 KS2 Extended School Dashboard

for headteachers, senior leaders & teachers

Produce custom dashboards
at fftaspire.org

St Joseph's Catholic Primary School

LA Worcestershire DfE 8853391 Produced January 2019

What it is

The FFT Extended School Dashboard provides headteachers, senior leaders and teachers with a more detailed analysis of school performance.

The dashboard consists of five individual sections – Summary, Reading, Maths, Writing, GPS – and includes additional reports not found in the standard FFT School Dashboard.

What it tells you

Strengths and areas for improvement

How does attainment and pupil progress compare to the national average?

How are you performing in different subjects?

Do you have any under-performing groups of pupils?

How might the context of your school affect performance?

How does pupil attendance compare to the national average?

About the data shown

1 2 3

Actual results

Actual results for your school, using a range of measures such as averages and thresholds.



Gauges

These display headline indicators and whether actual results and pupils' progress are in line with, or significantly above or below, the national average.

ESTIMATED



1 2 3

Pupil progress

The value added progress that your pupils have made from one key stage to the next. FFT compares your actual results to the estimated results based on the progress of similar pupils nationally.



Statistical significance

Green plus signs and red minus signs highlight where either actual results or pupils' progress is significantly above or below the national average.



Trends

The dashboard analyses school performance over 3-5 years. Any significant year-on-year improvement is highlighted using an up arrow. Significant declines in performance are highlighted with a down arrow.



Strengths & weaknesses

These highlight key pupil groups and subjects where progress is above or below the national average.

Working in partnership with



Data sources

Generated from FFT Aspire which includes data sourced from the DfE (National Pupil Database) and data calculated by FFT. FFT is accredited as a DfE supplier to receive early access to ASP data. Headline performance indicators will be consistent with the DfE School Performance Tables and ASP.

Summary analysis

Reports included in this section

Overview
Attainment & progress
Pupil groups
Subjects
Disadvantaged pupils
Scatterplot
Confidential: Contains personal information
Context



Key indicators

- Average Scaled Score (Re, Ma)
- % Expected standard+ (Re, Wr, Ma)
- % Higher standard (Re, Wr, Ma)
- % Expected standard+ Reading
- % Expected standard+ Maths
- % Expected standard+ Writing
- % Expected standard+ Grammar, Punctuation & Spelling
- % Expected standard+ Science



Value added

Achievement is compared with similar pupils nationally. The FFT VA model uses prior attainment, gender and month of birth as a starting point.

Overview

KS2 Attainment 2018 · Actual results

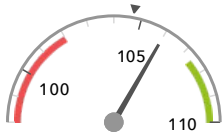
30 pupils

Average Scaled Score (Re, Ma)

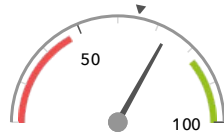
% Expected standard+ (Re, Wr, Ma)

106.0

73%



In line with the national average (104.7) ◀



In line with the national average (65%) ◀

KS2 Progress 2018 · Value Added

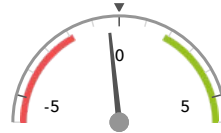
30 matched pupils

Average Scaled Score (Re, Ma)

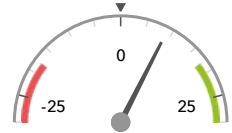
% Expected standard+ (Re, Wr, Ma)

-0.4

+9%



In line with the national average (0) ◀



In line with the national average (0%) ◀

KS2 higher and lower performing pupil groups 2018

	Higher performing	Lower performing
Overall achievement pupil progress	Indian (5) ⬆️ First language not English (9) Middle attainers (20)	White (21) First language English (21) Higher attainers (7)
KS2 reading achievement pupil progress	Indian (5) Summer Term (8) Female (14)	Autumn Term (12) Higher attainers (7) ⬇️ Male (16)
KS2 writing achievement pupil progress	Indian (5) First language not English (9)	First language English (21) ⬇️ White (21) ⬇️ Higher attainers (7)
KS2 mathematics achievement pupil progress	Indian (5) ⬆️ First language not English (9) Summer Term (8)	Higher attainers (7) Autumn Term (12)
KS2 grammar, punctuation & spelling achievement pupil progress	Indian (5) ⬆️ First language not English (9) Summer Term (8)	Autumn Term (12) White (21) Higher attainers (7)

Attainment & progress

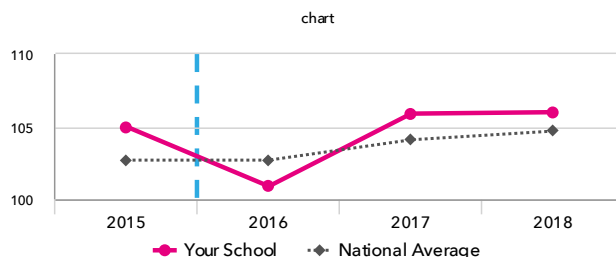
KS2 Attainment 2018

30 pupils

Average Scaled Score (Re, Ma)

106.0

FFT Rank

100
1 BETTER ▶In line with the national average
(104.7)

KS2 Progress 2018

30 matched pupils

Average Scaled Score (Re, Ma)

-0.4

FFT Rank

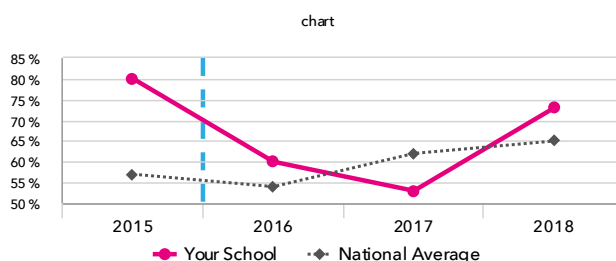
100
1 BETTER ▶

In line with the national average (0)

% Expected standard+ (Re, Wr, Ma)

73%

FFT Rank

100
1 BETTER ▶In line with the national average
(65%)

% Expected standard+ (Re, Wr, Ma)

+9%

FFT Rank

100
1 BETTER ▶In line with the national average
(0%)

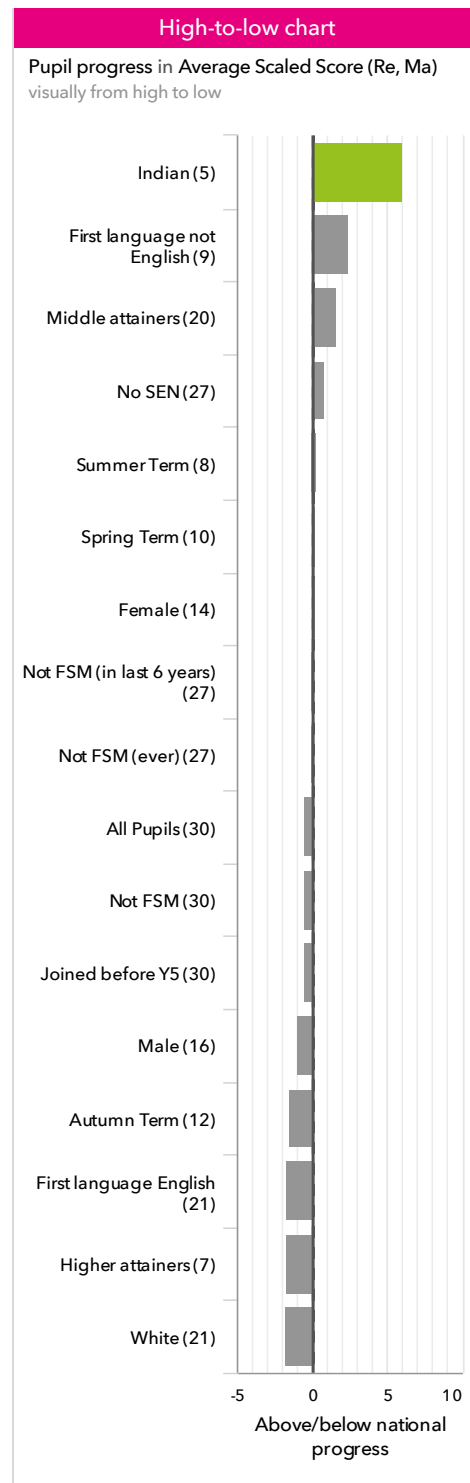
KS2 performance summary

	Actual results			Pupil progress		
	2016	2017	2018	2016	2017	2018
Number of Pupils / % Matched	30	30	30	97%	100%	100%
% Expected standard+ (Re, Wr, Ma)	60%	53%	73%	-4%	-11%	+9%
% Higher standard (Re, Wr, Ma)	0%	10%	10%	-7%	+3%	+2%
Average Scaled Score (Re, GPS, Ma)	101.6 ↓	105.9 ↑	106.3	-2.2 ⬇	+0.9 ↑	-0.4
Average Scaled Score (Re, Ma)	100.9 ↓	105.9 ↑	106.0	-2.7 ⬇	+1.4 ↑	-0.4
% Expected standard+ Reading	63%	73%	73%	-13%	-3%	-4%
% Higher standard Reading	7%	37%	23%	-18% ⬇	+10%	-3%
Scaled Score Reading	100.6 ↓	106.6 ↑	105.8	-2.8 ⬇	+1.9 ↑	+0.1
% Expected standard+ Writing	77%	73%	77%	-6%	-8%	-5%
% Higher standard Writing	10% ↓	17%	10%	-8%	-4%	-9%
Scaled Score Writing	101.2	101.8	99.6	-0.8	-0.5	-2.8 ⬇
% Expected standard+ Maths	70%	87%	80%	-7%	+10%	+5%
% Higher standard Maths	13%	27%	40% ⬆	-7%	+8%	+20% ⬆
Scaled Score Maths	101.1 ↓	105.2 ↑	106.2	-2.7 ⬇	+0.8 ↑	+1.3
% Expected standard+ Grammar, Punctuation & Spelling	77%	83%	77%	-5%	+1%	-4%
% Higher standard Grammar, Punctuation & Spelling	27%	30%	37%	+0%	-6%	+2%
Scaled Score Grammar, Punctuation & Spelling	103.8	106.6	107.0	-1.1	+0.2	+0.1
% Expected standard+ Science	83%	73%	80%	-	-	-

Pupil groups

KS2 Pupil groups performance 2018

			Actual results			Pupil progress		
	Pupils		Average Scaled Score (Re, Ma)	% Expected standard+ (Re, Wr, Ma)	% Higher standard (Re, Wr, Ma)	Average Scaled Score (Re, Ma)	% Expected standard+ (Re, Wr, Ma)	% Higher standard (Re, Wr, Ma)
Summary	All Pupils	30	106.0	73%	10%	-0.4	+9%	+2%
Gender	Male	16	103.5	63%	6%	-1.0	+8%	+2%
	Female	14	108.8	86%	14%	+0.2	+10%	+3%
DFE Prior Attainment	Higher attainers	7	109.4	100%	14%	-1.7 ↓	+3%	-13%
	Middle attainers	20	105.4 +	75%	10% +	+1.6	+14%	+8% +
	Lower attainers	3	94.5	0%	0%	-11.3 -	-9%	-0%
Pupil Premium	FSM (in last 6 years)	3	100.5	33%	0%	-5.6	+3%	-0%
	Not FSM (in last 6 years)	27	106.4	78%	11%	+0.1	+10%	+3%
FSM	Not FSM	30	106.0	73%	10%	-0.4	+9%	+2%
FSM Ever	FSM (ever)	3	100.5	33%	0%	-5.6	+3%	-0%
	Not FSM (ever)	27	106.4	78%	11%	+0.1	+10%	+3%
Term of Birth	Autumn Term	12	103.4	75%	0%	-1.5	+11%	-8%
	Spring Term	10	107.9	70%	20%	+0.2	+4%	+11%
	Summer Term	8	108.0	75%	13%	+0.3	+13%	+7%
SEN Group	SEN Support	3	100.0	0%	0%	-11.3	-16%	-0%
	No SEN	27	106.2	81% ↑	11%	+0.8	+12%	+3%
EAL	First language not English	9	106.7	78%	22%	+2.4	+16%	+13%
	First language English	21	105.7	71%	5%	-1.7	+6%	-2%
Mobility	Joined before Y5	30	106.0	73%	10%	-0.4	+9%	+2%
Ethnicity	White	21	105.4	71%	5%	-1.8	+7%	-2%
	Black African	1	93.0	0%	0%	-5.8	-22%	-0%
	Indian	5	110.8	100%	20%	+6.0 +	+33%	+16%
	Other Asian	1	112.5	100%	100%	+0.3	+2%	+63%
	Any Other	2	102.5	50%	0%	-0.2	-4%	-12%
	Other							



Subjects

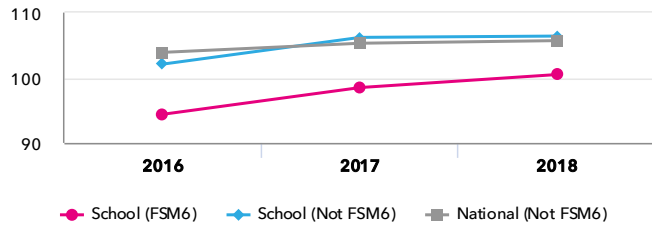
KS2 subject performance 2018

	Actual results			Pupil progress			Actual results over time													
	2016	2017	2018	2016	2017	2018														
Number of Pupils / % Matched	30	30	30	97%	100%	100%														
Reading																				
% Expected standard+	63%	73%	73%	-13%	-3%	-4%	<div>% Expected standard+ Reading</div> <div>chart</div> <table><thead><tr><th>Year</th><th>Your School</th><th>National Average</th></tr></thead><tbody><tr><td>2016</td><td>63%</td><td>~67%</td></tr><tr><td>2017</td><td>73%</td><td>~73%</td></tr><tr><td>2018</td><td>73%</td><td>~75%</td></tr></tbody></table>		Year	Your School	National Average	2016	63%	~67%	2017	73%	~73%	2018	73%	~75%
Year	Your School	National Average																		
2016	63%	~67%																		
2017	73%	~73%																		
2018	73%	~75%																		
% Higher standard	7%	37%	23%	-18% ⬇️	+10% ⬆️	-3%														
Scaled Score	101 ⬇️	107 ⬆️	106	-2.8 ⬇️	+1.9 ⬆️	+0.1														
Writing																				
% Expected standard+	77%	73%	77%	-6%	-8%	-5%	<div>% Expected standard+ Writing</div> <div>chart</div> <table><thead><tr><th>Year</th><th>Your School</th><th>National Average</th></tr></thead><tbody><tr><td>2016</td><td>77%</td><td>~75%</td></tr><tr><td>2017</td><td>73%</td><td>~77%</td></tr><tr><td>2018</td><td>77%</td><td>~78%</td></tr></tbody></table>		Year	Your School	National Average	2016	77%	~75%	2017	73%	~77%	2018	77%	~78%
Year	Your School	National Average																		
2016	77%	~75%																		
2017	73%	~77%																		
2018	77%	~78%																		
% Higher standard	10% ⬇️	17%	10%	-8%	-4%	-9%														
Scaled Score	101	102	100	-0.8	-0.5	-2.8 ⬇️														
Maths																				
% Expected standard+	70%	87%	80%	-7%	+10%	+5%	<div>% Expected standard+ Maths</div> <div>chart</div> <table><thead><tr><th>Year</th><th>Your School</th><th>National Average</th></tr></thead><tbody><tr><td>2016</td><td>70%</td><td>~70%</td></tr><tr><td>2017</td><td>87%</td><td>~75%</td></tr><tr><td>2018</td><td>80%</td><td>~75%</td></tr></tbody></table>		Year	Your School	National Average	2016	70%	~70%	2017	87%	~75%	2018	80%	~75%
Year	Your School	National Average																		
2016	70%	~70%																		
2017	87%	~75%																		
2018	80%	~75%																		
% Higher standard	13%	27%	40% ⬆️	-7%	+8%	+20% ⬆️														
Scaled Score	101 ⬇️	105 ⬆️	106	-2.7 ⬇️	+0.8 ⬆️	+1.3														
Grammar, Punctuation & Spelling																				
% Expected standard+	77%	83%	77%	-5%	+1%	-4%	<div>% Expected standard+ Grammar, Punctuation & Spelling</div> <div>chart</div> <table><thead><tr><th>Year</th><th>Your School</th><th>National Average</th></tr></thead><tbody><tr><td>2016</td><td>77%</td><td>~73%</td></tr><tr><td>2017</td><td>83%</td><td>~78%</td></tr><tr><td>2018</td><td>77%</td><td>~78%</td></tr></tbody></table>		Year	Your School	National Average	2016	77%	~73%	2017	83%	~78%	2018	77%	~78%
Year	Your School	National Average																		
2016	77%	~73%																		
2017	83%	~78%																		
2018	77%	~78%																		
% Higher standard	27%	30%	37%	+0%	-6%	+2%														
Scaled Score	104	107	107	-1.1	+0.2	+0.1														
Science																				
% Expected standard+	83%	73%	80%	-	-	-	<div>% Expected standard+ Science</div> <div>chart</div> <table><thead><tr><th>Year</th><th>Your School</th><th>National Average</th></tr></thead><tbody><tr><td>2016</td><td>83%</td><td>~81%</td></tr><tr><td>2017</td><td>73%</td><td>~82%</td></tr><tr><td>2018</td><td>80%</td><td>~83%</td></tr></tbody></table>		Year	Your School	National Average	2016	83%	~81%	2017	73%	~82%	2018	80%	~83%
Year	Your School	National Average																		
2016	83%	~81%																		
2017	73%	~82%																		
2018	80%	~83%																		

Disadvantaged pupils

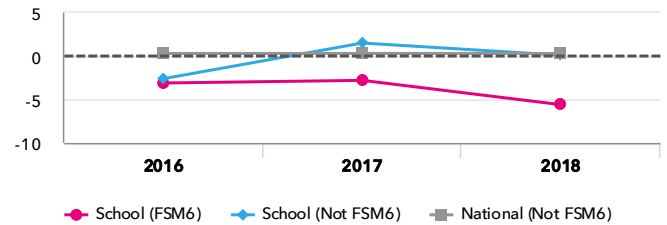
KS2 attainment for disadvantaged pupils 2018

Average Scaled Score (Re, Ma)



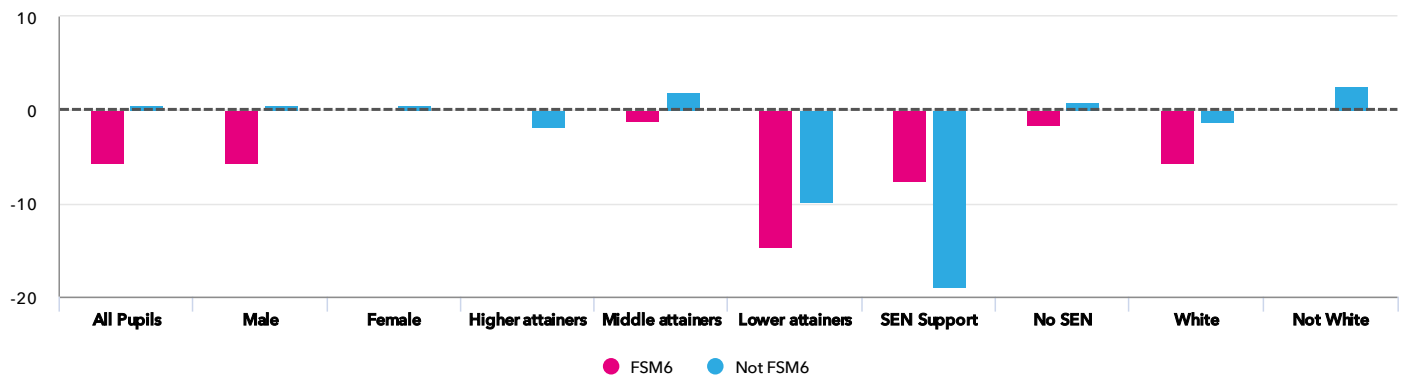
KS2 progress for disadvantaged pupils 2018

Average Scaled Score (Re, Ma)



Progress gap

Average Scaled Score (Re, Ma)

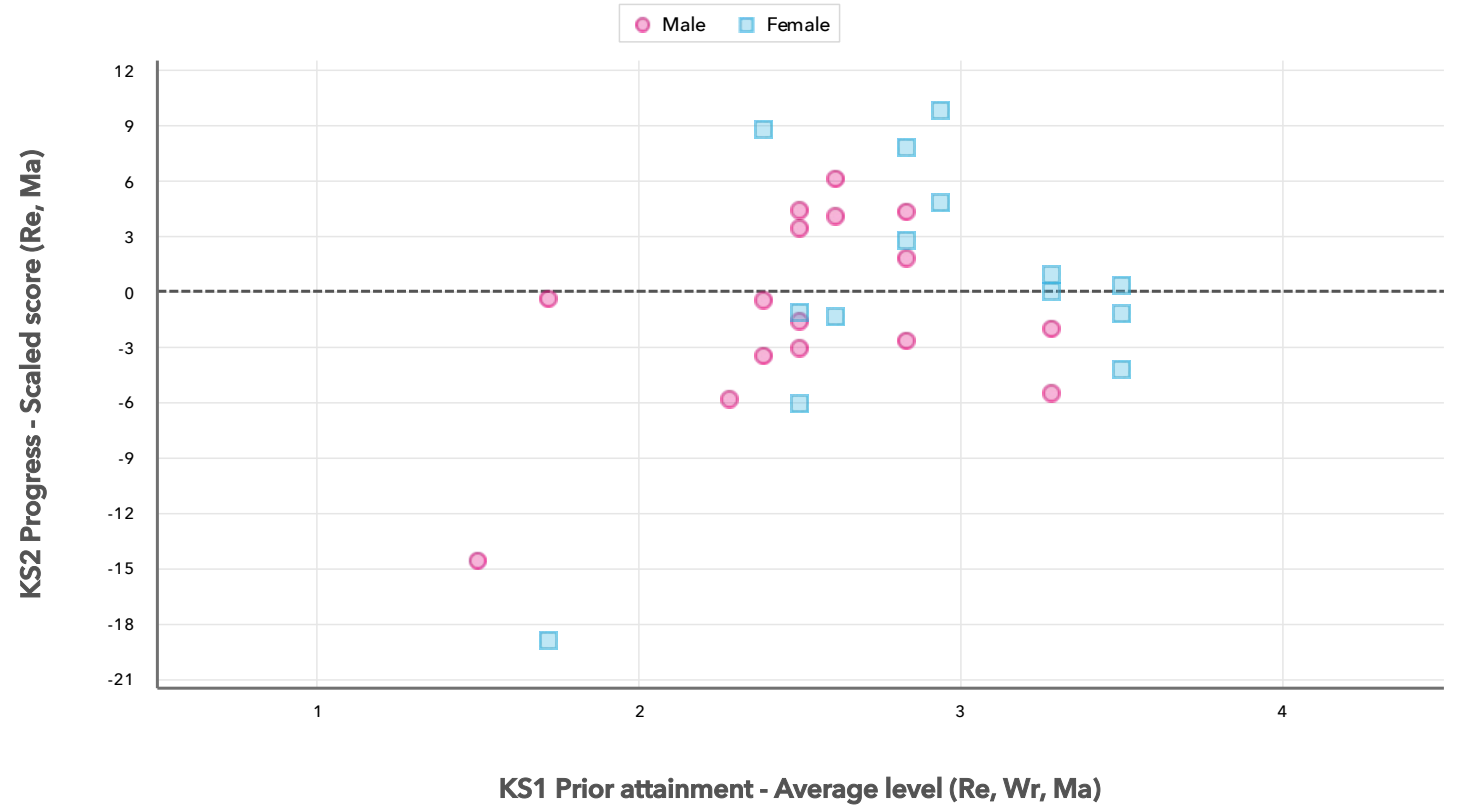


Attainment & progress

Pupils				Attainment			Progress		
				Average Scaled Score (Re, Ma)			Average Scaled Score (Re, Ma)		
		FSM6	Not FSM6	FSM6	Not FSM6	Gap	FSM6	Not FSM6	Gap
Summary	All Pupils	3	27	100.5	106.4	-5.9	-5.6	0.1	-5.7
Gender	Male	3	13	100.5	104	-3.5	-5.6	0.1	-5.7
	Female	-	14	-	108.8	-	-	0.2	-
DFE Prior Attainment	Higher attainers	-	7	-	109.4	-	-	-1.7	-
	Middle attainers	2	18	100.5	105.9	-5.4	-1.1	1.9	-3
	Lower attainers	1	2	-	94.5	-	-14.6	-9.7	-4.9
SEN Group	SEN Support	2	1	100	-	-	-7.5	-18.9	11.4
	No SEN	1	26	101	106.4	-5.4	-1.6	0.9	-2.5
Ethnic Group	White	3	18	100.5	106	-5.5	-5.6	-1.2	-4.4
	Not White	-	9	-	107.2	-	-	2.7	-

Scatterplot

KS2 Pupil scatterplot 2018 30 pupils highlighted by Gender



Context

Context · Year 6 · 2017 / 2018

			Pupils		Proportion	
			School	National		
Summary	All Pupils	30	100%	100%		
Gender	Male	16	53%	51%		
	Female	14	47%	49%		
DFE Prior Attainment	Higher attainers	7	23%	31%		
	Middle attainers	20	67%	55%		
	Lower attainers	3	10%	9%		
Pupil Premium	FSM (in last 6 years)	3	10%	30%		
	Not FSM (in last 6 years)	27	90%	69%		
FSM	Not FSM	30	100%	85%		
FSM Ever	FSM (ever)	3	10%	31%		
	Not FSM (ever)	27	90%	69%		
Term of Birth	Autumn Term	12	40%	33%		
	Spring Term	10	33%	32%		
	Summer Term	8	27%	35%		
SEN Group	SEN Support	3	10%	15%		
	No SEN	27	90%	82%		
EAL	First language not English	9	30%	20%		
	First language English	21	70%	80%		
Mobility	Joined before Y5	30	100%	93%		
Ethnicity	White	21	70%	74%		
	Black African	1	3%	6%		
	Indian	5	17%	3%		
	Other Asian	1	3%	3%		
	Any Other	2	7%	4%		

Absence · Year 6 · Autumn 2014 - Summer 2017

Pupils			Absence		Persistent absentees	
			School	National	School	National
Summary	All Pupils	30	4%	4%	7%	6%
Gender	Male	16	5%	4%	13%	6%
	Female	14	3%	4%	0%	5%
DFE Prior Attainment	Higher attainers	7	3%	3%	0%	2%
	Middle attainers	20	5%	4%	5%	6%
	Lower attainers	3	7%	6%	33%	14%
Pupil Premium	FSM (in last 6 years)	3	11%	5%	67%	12%
	Not FSM (in last 6 years)	27	4%	3%	0%	3%
FSM	Not FSM	30	4%	4%	7%	4%
FSM Ever	FSM (ever)	3	11%	5%	67%	11%
	Not FSM (ever)	27	4%	3%	0%	3%
Term of Birth	Autumn Term	12	3%	4%	0%	6%
	Spring Term	10	6%	4%	20%	6%
	Summer Term	8	5%	4%	0%	5%
SEN Group	SEN Support	3	8%	5%	33%	10%
	No SEN	27	4%	4%	4%	4%
EAL	First language not English	9	4%	4%	0%	5%
	First language English	21	5%	4%	10%	6%
Mobility	Joined before Y5	30	4%	4%	7%	5%
Ethnicity	White	21	5%	4%	10%	6%
	Black African	1	2%	3%	0%	3%
	Indian	5	5%	3%	0%	3%
	Other Asian	1	3%	4%	0%	4%
	Any Other	2	3%	4%	0%	6%

Your evaluation – Summary analysis

2018

Key Stage 2

Use this page to assess your performance, evaluate your interventions and summarise key actions for next year. Keep your evaluation clear and focused. Key actions should include timescales and owners.

Strengths

Areas for improvement

Key actions to improve performance

Reading analysis

Reports included in this section

Attainment & progress
Pupil groups
Disadvantaged pupils
Scatterplot
Confidential: Contains personal information



Key indicators

Scaled Score Reading

% Expected standard+ Reading

% Higher standard Reading



Value added

Achievement is compared with similar pupils nationally. The FFT VA model uses prior attainment, gender and month of birth as a starting point.

Attainment & progress

KS2 Attainment 2018

30 pupils

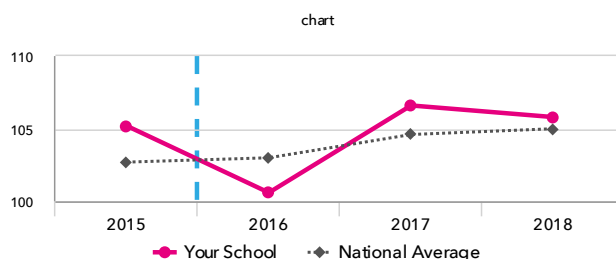
Scaled Score Reading

105.8 pts

FFT Rank



In line with the national average (105.0)



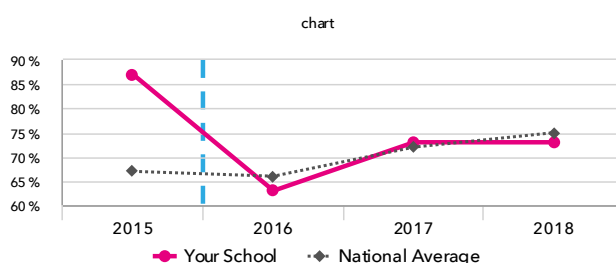
% Expected standard+ Reading

73%

FFT Rank



In line with the national average (75%)



KS2 Progress 2018

30 matched pupils

Scaled Score Reading

+0.1 pts

FFT Rank



In line with the national average (0%)

% Expected standard+ Reading

-4%

FFT Rank



In line with the national average (0%)

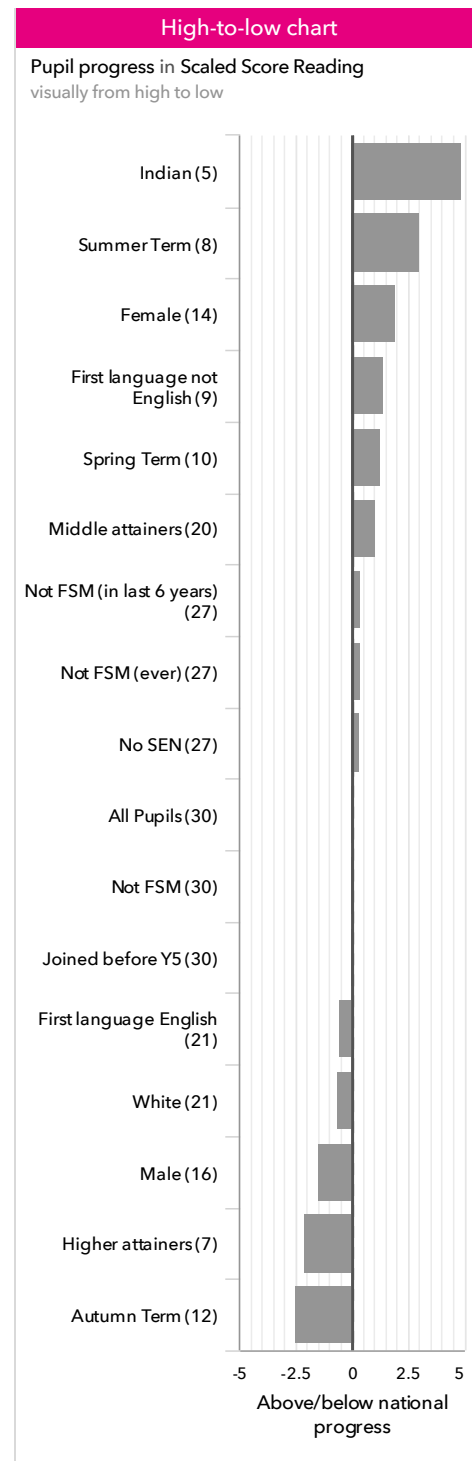
KS2 performance summary

	Actual results			Pupil progress		
	2016	2017	2018	2016	2017	2018
Number of Pupils / % Matched	30	30	30	97%	100%	100%
% Expected standard+ (Re, Wr, Ma)	60%	53%	73%	-4%	-11%	+9%
% Higher standard (Re, Wr, Ma)	0%	10%	10%	-7%	+3%	+2%
Average Scaled Score (Re, GPS, Ma)	101.6 ↓	105.9 ↑	106.3	-2.2	+0.9 ↑	-0.4
Average Scaled Score (Re, Ma)	100.9 ↓	105.9 ↑	106.0	-2.7	+1.4 ↑	-0.4
% Expected standard+ Reading	63%	73%	73%	-13%	-3%	-4%
% Higher standard Reading	7%	37%	23%	-18%	+10%	-3%
Scaled Score Reading	100.6 ↓	106.6 ↑	105.8	-2.8	+1.9 ↑	+0.1
% Expected standard+ Writing	77%	73%	77%	-6%	-8%	-5%
% Higher standard Writing	10%	17%	10%	-8%	-4%	-9%
Scaled Score Writing	101.2	101.8	99.6	-0.8	-0.5	-2.8
% Expected standard+ Maths	70%	87%	80%	-7%	+10%	+5%
% Higher standard Maths	13%	27%	40%	-7%	+8%	+20%
Scaled Score Maths	101.1 ↓	105.2 ↑	106.2	-2.7	+0.8 ↑	+1.3
% Expected standard+ Grammar, Punctuation & Spelling	77%	83%	77%	-5%	+1%	-4%
% Higher standard Grammar, Punctuation & Spelling	27%	30%	37%	+0%	-6%	+2%
Scaled Score Grammar, Punctuation & Spelling	103.8	106.6	107.0	-1.1	+0.2	+0.1
% Expected standard+ Science	83%	73%	80%	-	-	-

Pupil groups

KS2 Pupil groups performance 2018

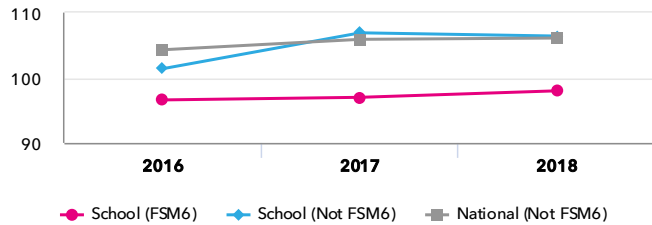
		Pupils	Actual results			Pupil progress		
			Scaled Score Reading	% Expected standard+ Reading	% Higher standard Reading	Scaled Score Reading	% Expected standard+ Reading	% Higher standard Reading
Summary	All Pupils	30	105.8	73%	23%	+0.1	-4%	-3%
Gender	Male	16	102.5	63%	13%	-1.5	-8%	-6%
	Female	14	109.6	86%	36%	+1.9	+1%	-1%
DFE Prior Attainment	Higher attainers	7	109.1	100%	14%	-2.1 ↓	+2%	-46% ⚠
	Middle attainers	20	105.4	75%	30%	+1.0	-3%	+11%
	Lower attainers	3	92.0	0%	0%	-3.1	-23%	-2%
Pupil Premium	FSM (in last 6 years)	3	98.0	33%	0%	-3.8	-17%	-7%
	Not FSM (in last 6 years)	27	106.4	78%	26%	+0.4	-2%	-3%
FSM	Not FSM	30	105.8	73%	23%	+0.1	-4%	-3%
FSM Ever	FSM (ever)	3	98.0	33%	0%	-3.8	-17%	-7%
	Not FSM (ever)	27	106.4	78%	26%	+0.4	-2%	-3%
Term of Birth	Autumn Term	12	102.8	75%	0% ⚠	-2.4	-2%	-26%
	Spring Term	10	107.8	70%	30%	+1.3	-9%	-1%
	Summer Term	8	108.4	75%	50%	+3.0	-1%	+28%
SEN Group	SEN Support	3	95.0	0%	0%	-5.7	-35%	-4%
	No SEN	27	106.2	81%	26%	+0.3	-0%	-3%
EAL	First language not English	9	106.1	78%	33%	+1.4	+3%	+4%
	First language English	21	105.7	71%	19%	-0.5	-7%	-7%
Mobility	Joined before Y5	30	105.8	73%	23%	+0.1	-4%	-3%
Ethnicity	White	21	105.5	71%	19%	-0.6	-6%	-7%
	Black African	1	92.0	0%	0%	-7.1	-49%	-5%
	Indian	5	110.2	100%	40%	+4.9	+18%	+13%
	Other Asian	1	115.0	100%	100%	+2.5	+1%	+32%
	Any Other	2	100.0	50%	0%	-2.8	-11%	-29%



Disadvantaged pupils

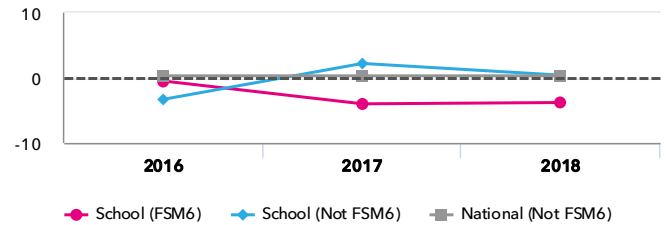
KS2 attainment for disadvantaged pupils 2018

Scaled Score Reading



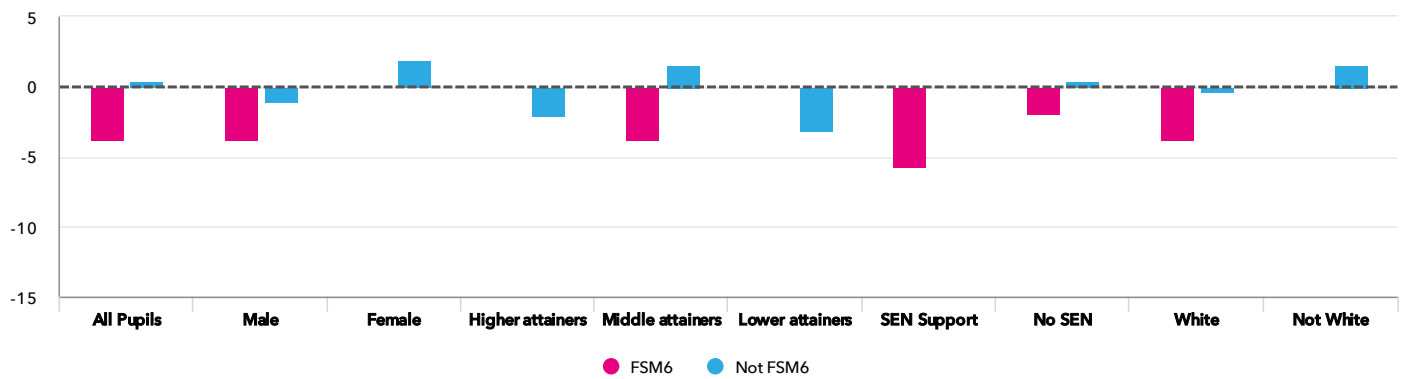
KS2 progress for disadvantaged pupils 2018

Scaled Score Reading



Progress gap

Scaled Score Reading

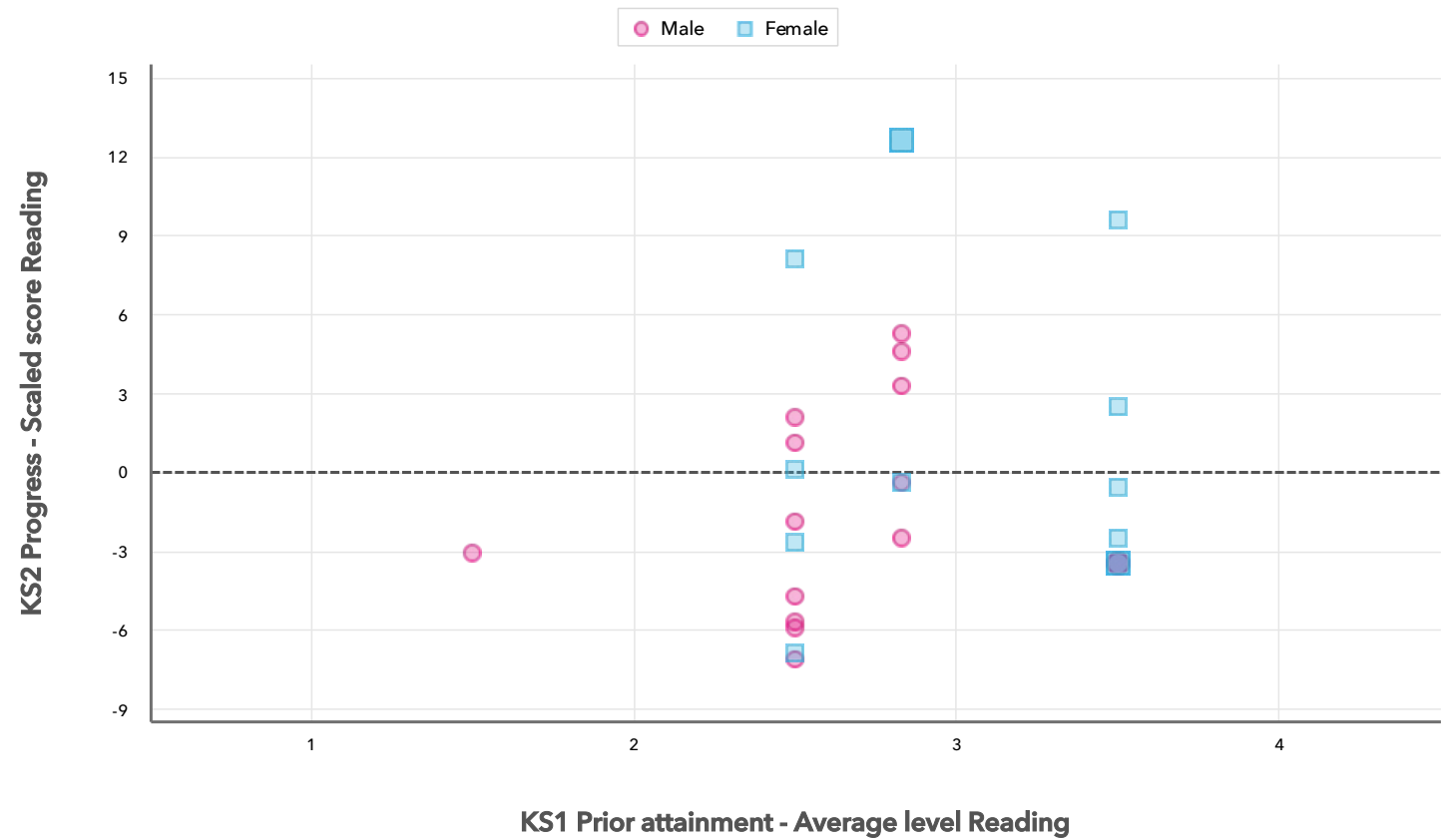


Attainment & progress

Pupils				Attainment			Progress		
				Scaled Score Reading			Scaled Score Reading		
		FSM6	Not FSM6	FSM6	Not FSM6	Gap	FSM6	Not FSM6	Gap
Summary	All Pupils	3	27	98	106.4	-8.4	-3.8	0.4	-4.2
Gender	Male	3	13	98	103.2	-5.2	-3.8	-1.1	-2.7
	Female	-	14	-	109.6	-	-	1.9	-
DFE Prior Attainment	Higher attainers	-	7	-	109.1	-	-	-2.1	-
	Middle attainers	2	18	98	106.2	-8.2	-3.8	1.6	-5.4
	Lower attainers	1	2	-	92	-	-	-3.1	-
SEN Group	SEN Support	2	1	95	-	-	-5.7	-	-
	No SEN	1	26	101	106.4	-5.4	-1.9	0.4	-2.3
Ethnic Group	White	3	18	98	106.4	-8.4	-3.8	-0.2	-3.6
	Not White	-	9	-	106.4	-	-	1.6	-

Scatterplot

KS2 Pupil scatterplot 2018 30 pupils highlighted by Gender



Your evaluation – Reading analysis

2018

Key Stage 2

Use this page to assess your performance, evaluate your interventions and summarise key actions for next year. Keep your evaluation clear and focused. Key actions should include timescales and owners.

Strengths

Areas for improvement

Key actions to improve performance

Maths analysis

Reports included in this section

Attainment & progress

Pupil groups

Disadvantaged pupils

Scatterplot

Confidential: Contains personal information



Key indicators

Scaled Score Maths

% Expected standard+ Maths

% Higher standard Maths



Value added

Achievement is compared with similar pupils nationally. The FFT VA model uses prior attainment, gender and month of birth as a starting point.

Attainment & progress

KS2 Attainment 2018

30 pupils

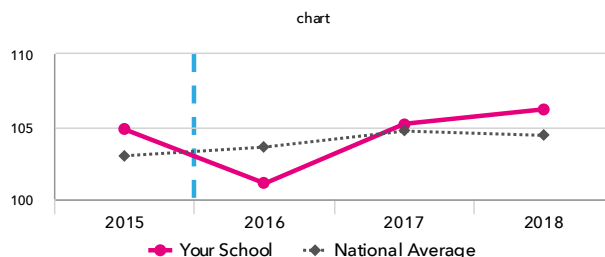
Scaled Score Maths

106.2 pts

FFT Rank

100
1 BETTER ▶

In line with the national average
(104.4)



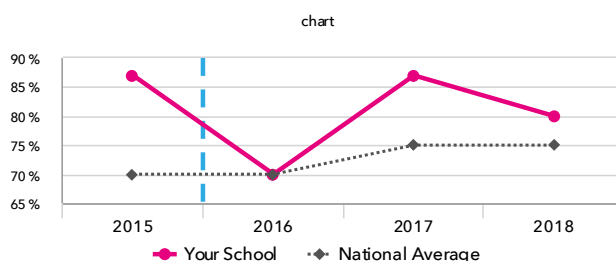
% Expected standard+ Maths

80%

FFT Rank

100
1 BETTER ▶

In line with the national average
(75%)



KS2 Progress 2018

30 matched pupils

Scaled Score Maths

+1.3 pts

FFT Rank

100
1 BETTER ▶

In line with the national average (0)

% Expected standard+ Maths

+5%

FFT Rank

100
1 BETTER ▶

In line with the national average
(0%)

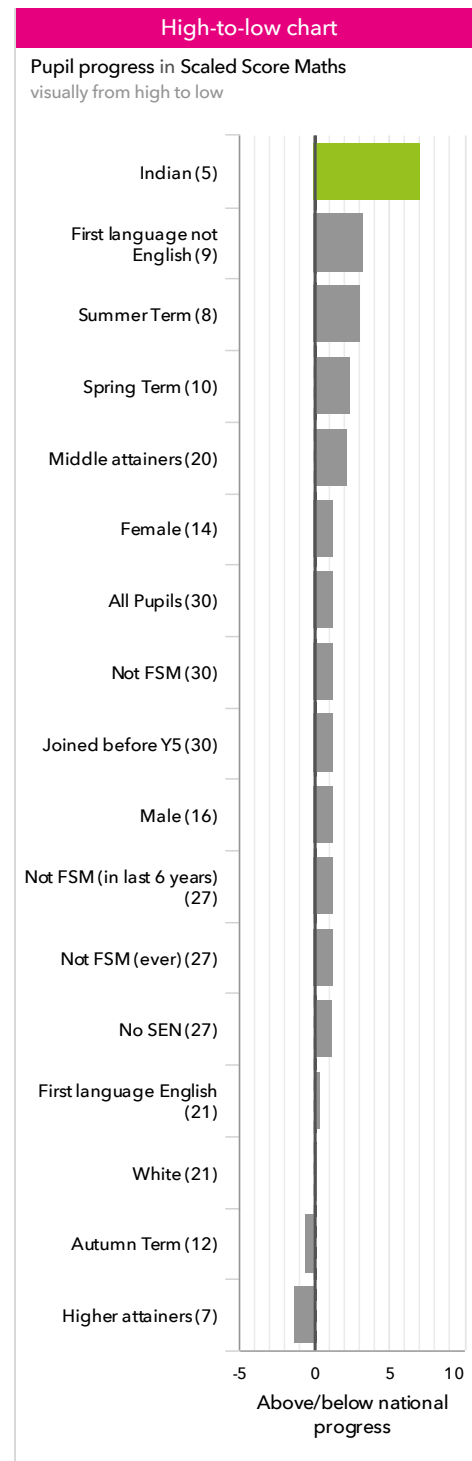
KS2 performance summary

	Actual results			Pupil progress		
	2016	2017	2018	2016	2017	2018
Number of Pupils / % Matched	30	30	30	97%	100%	100%
% Expected standard+ (Re, Wr, Ma)	60%	53%	73%	-4%	-11%	+9%
% Higher standard (Re, Wr, Ma)	0%	10%	10%	-7%	+3%	+2%
Average Scaled Score (Re, GPS, Ma)	101.6 ↓	105.9 ↑	106.3	-2.2	+0.9 ↑	-0.4
Average Scaled Score (Re, Ma)	100.9 ↓	105.9 ↑	106.0	-2.7	+1.4 ↑	-0.4
% Expected standard+ Reading	63%	73%	73%	-13%	-3%	-4%
% Higher standard Reading	7%	37%	23%	-18%	+10%	-3%
Scaled Score Reading	100.6 ↓	106.6 ↑	105.8	-2.8	+1.9 ↑	+0.1
% Expected standard+ Writing	77%	73%	77%	-6%	-8%	-5%
% Higher standard Writing	10%	17%	10%	-8%	-4%	-9%
Scaled Score Writing	101.2	101.8	99.6	-0.8	-0.5	-2.8
% Expected standard+ Maths	70%	87%	80%	-7%	+10%	+5%
% Higher standard Maths	13%	27%	40%	-7%	+8%	+20%
Scaled Score Maths	101.1 ↓	105.2 ↑	106.2	-2.7	+0.8 ↑	+1.3
% Expected standard+ Grammar, Punctuation & Spelling	77%	83%	77%	-5%	+1%	-4%
% Higher standard Grammar, Punctuation & Spelling	27%	30%	37%	+0%	-6%	+2%
Scaled Score Grammar, Punctuation & Spelling	103.8	106.6	107.0	-1.1	+0.2	+0.1
% Expected standard+ Science	83%	73%	80%	-	-	-

Pupil groups

KS2 Pupil groups performance 2018

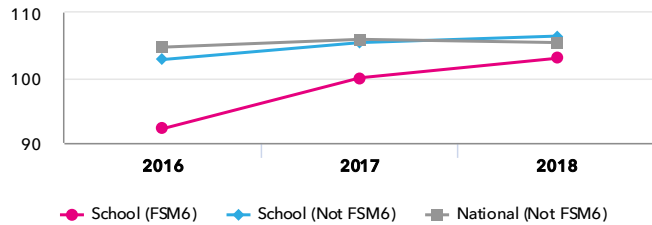
			Actual results			Pupil progress		
			Scaled Score Maths	% Expected standard+ Maths	% Higher standard Maths	Scaled Score Maths	% Expected standard+ Maths	% Higher standard Maths
Summary	All Pupils	30	106.2	80%	40% +	+1.3	+5%	+20% +
Gender	Male	16	104.5	75%	31%	+1.3	+4%	+15%
	Female	14	108.1	86%	50% +	+1.3	+5%	+27% +
DFE Prior Attainment	Higher attainers	7	109.6	100%	71%	-1.3	+2%	+18%
	Middle attainers	20	105.5	85%	35% +	+2.2	+10%	+25% +
	Lower attainers	3	97.0	0%	0% +	+2.2	-23%	-1% +
Pupil Premium	FSM (in last 6 years)	3	103.0	67%	0%	+1.7	+19%	-3%
	Not FSM (in last 6 years)	27	106.4	81%	44%	+1.3	+3%	+23% +
FSM	Not FSM	30	106.2	80%	40%	+1.3	+5%	+20% +
FSM Ever	FSM (ever)	3	103.0	67%	0%	+1.7	+19%	-3%
	Not FSM (ever)	27	106.4	81%	44%	+1.3	+3%	+23% +
Term of Birth	Autumn Term	12	103.9	75%	25%	-0.5	-0%	+4%
	Spring Term	10	108.1	90%	50%	+2.4	+14%	+31% +
	Summer Term	8	107.6	75%	50%	+3.1	-1%	+31%
SEN Group	SEN Support	3	105.0	33%	0%	+4.7	+5%	-1%
	No SEN	27	106.2	85%	44%	+1.2	+4%	+23% +
EAL	First language not English	9	107.3	78%	67% +	+3.3	+4%	+47% +
	First language English	21	105.6	81%	29%	+0.4	+5%	+9%
Mobility	Joined before Y5	30	106.2	80%	40%	+1.3	+5%	+20% +
Ethnicity	White	21	105.4	81%	24%	+0.2	+5%	+4%
	Black African	1	94.0	0%	0%	-4.6	-40%	-1%
	Indian	5	111.4	100%	100%	+7.1 +	+20%	+88% +
	Other Asian	1	110.0	100%	100%	-1.9	+1%	+41%
	Any Other	2	105.0	50%	50%	+2.3	-15%	+22%



Disadvantaged pupils

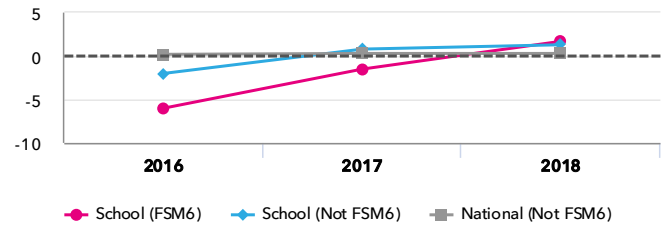
KS2 attainment for disadvantaged pupils 2018

Scaled Score Maths



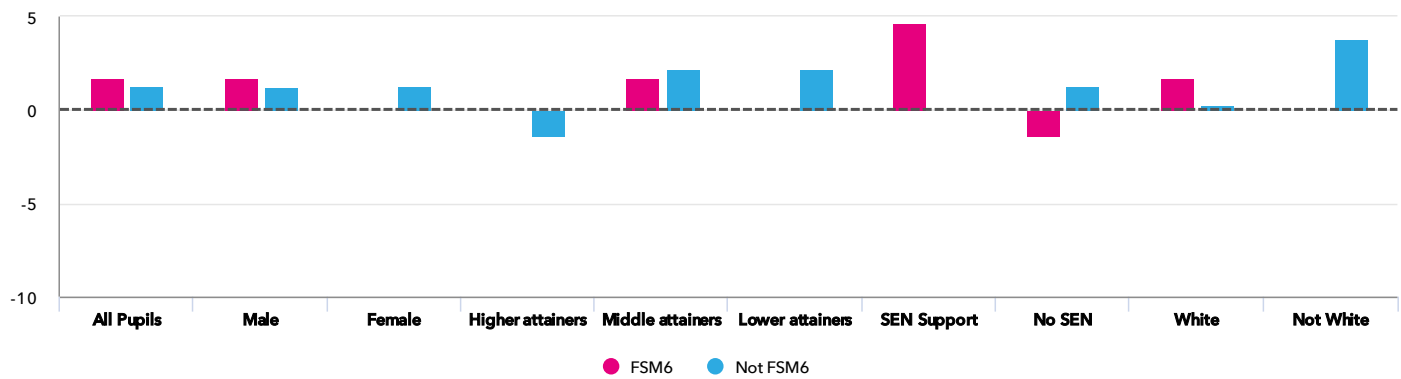
KS2 progress for disadvantaged pupils 2018

Scaled Score Maths



Progress gap

Scaled Score Maths

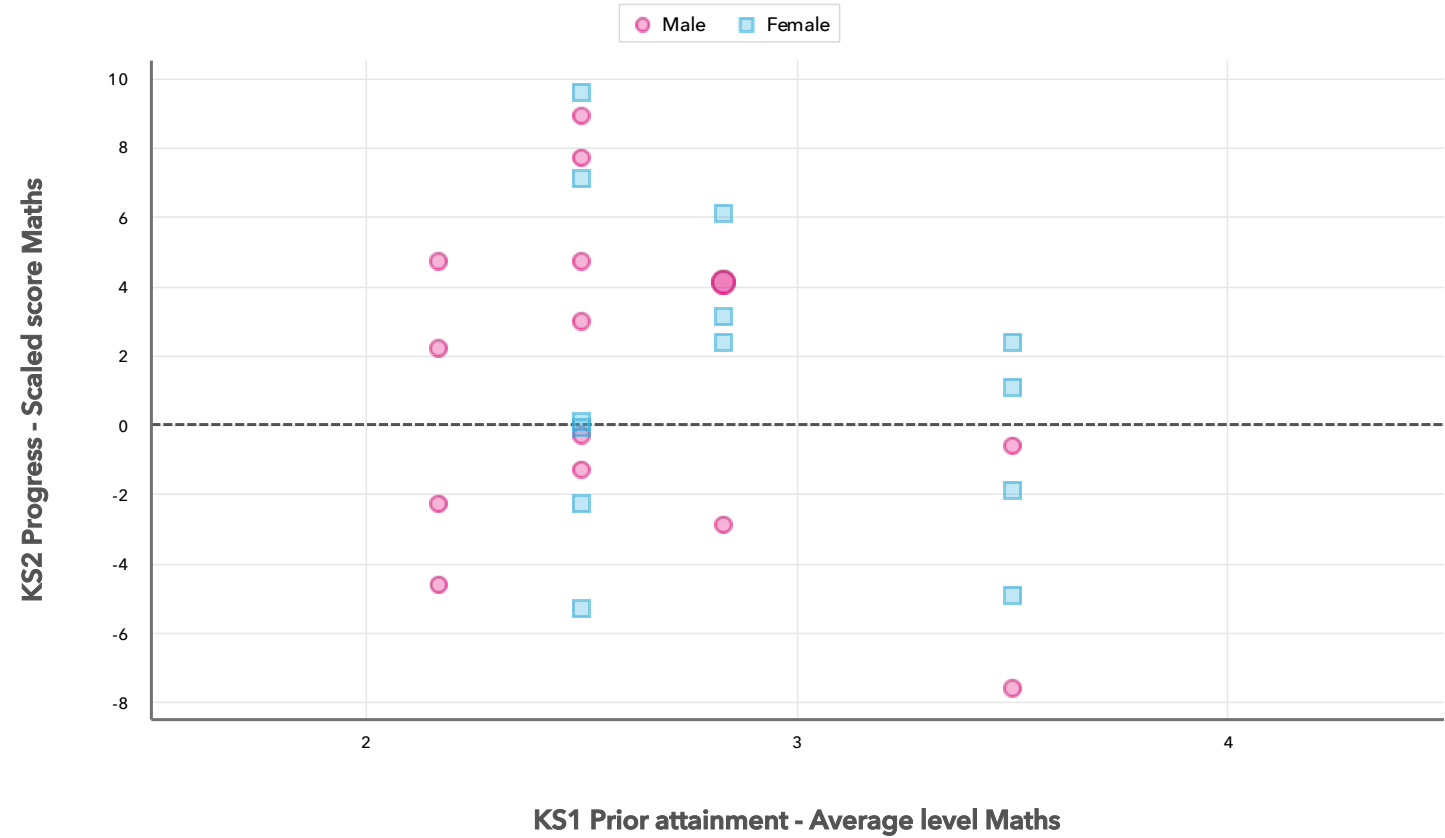


Attainment & progress

Pupils				Attainment			Progress		
				Scaled Score Maths			Scaled Score Maths		
		FSM6	Not FSM6	FSM6	Not FSM6	Gap	FSM6	Not FSM6	Gap
Summary	All Pupils	3	27	103	106.4	-3.4	1.7	1.3	0.4
Gender	Male	3	13	103	104.8	-1.8	1.7	1.2	0.5
	Female	-	14	-	108.1	-	-	1.3	-
DFE Prior Attainment	Higher attainers	-	7	-	109.6	-	-	-1.3	-
	Middle attainers	2	18	103	105.7	-2.7	1.7	2.2	-0.5
	Lower attainers	1	2	-	97	-	-	2.2	-
SEN Group	SEN Support	2	1	105	-	-	4.7	-	-
	No SEN	1	26	101	106.4	-5.4	-1.3	1.3	-2.6
Ethnic Group	White	3	18	103	105.6	-2.6	1.7	-0.0	1.7
	Not White	-	9	-	107.9	-	-	3.8	-

Scatterplot

KS2 Pupil scatterplot 2018 30 pupils highlighted by Gender



Your evaluation – Maths analysis

2018

Key Stage 2

Use this page to assess your performance, evaluate your interventions and summarise key actions for next year. Keep your evaluation clear and focused. Key actions should include timescales and owners.

Strengths

Areas for improvement

Key actions to improve performance

Writing analysis

Reports included in this section

Attainment & progress
Pupil groups
Disadvantaged pupils
Scatterplot
Confidential: Contains personal information



Key indicators

Scaled Score Writing

% Expected standard+ Writing

% Higher standard Writing



Value added

Achievement is compared with similar pupils nationally. The FFT VA model uses prior attainment, gender and month of birth as a starting point.

Attainment & progress

KS2 Attainment 2018

30 pupils

Scaled Score Writing

99.6

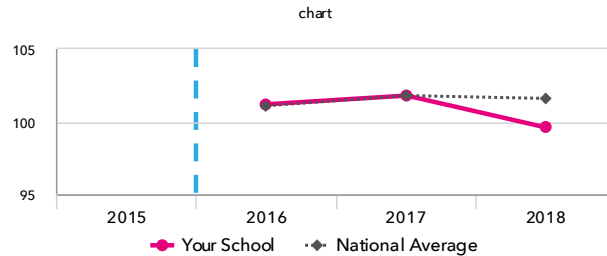
FFT Rank

85

100

BETTER ▶

1

In line with the national average
(101.6)

% Expected standard+ Writing

77%

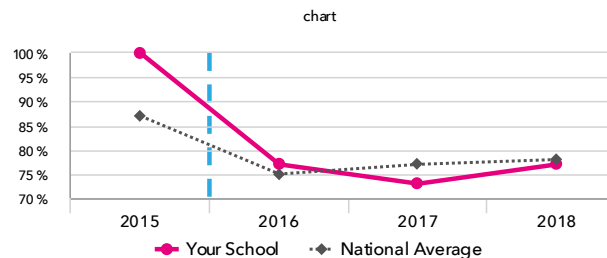
FFT Rank

65

100

BETTER ▶

1

In line with the national average
(78%)

KS2 Progress 2018

30 matched pupils

Scaled Score Writing

-2.8

FFT Rank

91

100

BETTER ▶

1

Significantly below the national
average (0)

% Expected standard+ Writing

-5%

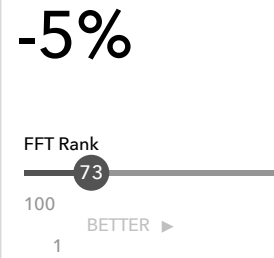
FFT Rank

73

100

BETTER ▶

1

In line with the national average
(0%)

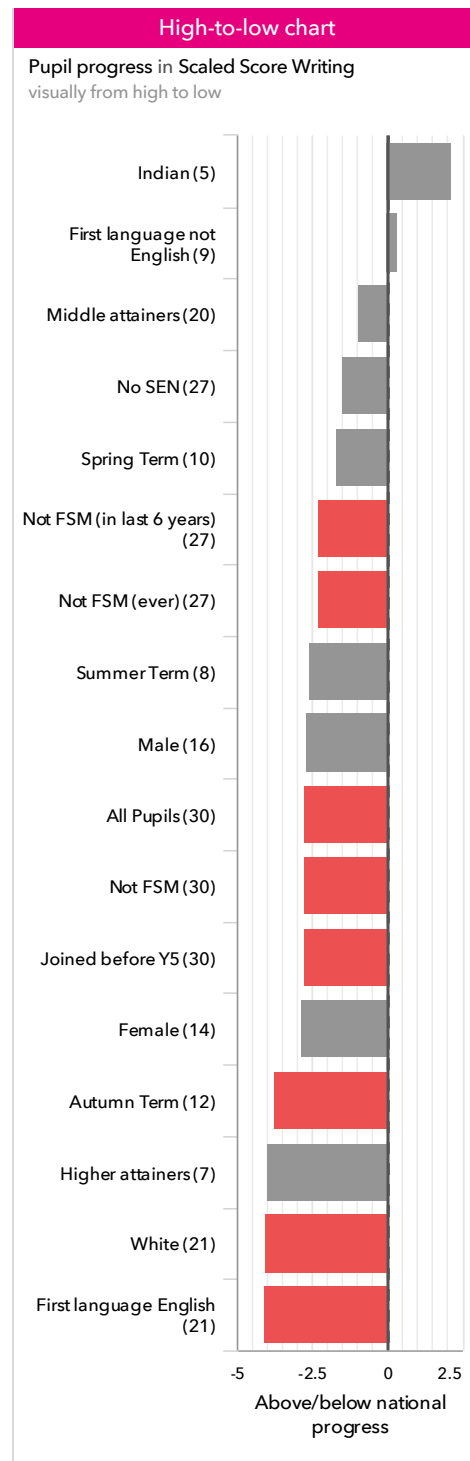
KS2 performance summary

	Actual results			Pupil progress		
	2016	2017	2018	2016	2017	2018
Number of Pupils / % Matched	30	30	30	97%	100%	100%
% Expected standard+ (Re, Wr, Ma)	60%	53%	73%	-4%	-11%	+9%
% Higher standard (Re, Wr, Ma)	0%	10%	10%	-7%	+3%	+2%
Average Scaled Score (Re, GPS, Ma)	101.6	↓ 105.9	↑ 106.3	-2.2	+0.9	↑ -0.4
Average Scaled Score (Re, Ma)	100.9	↓ 105.9	↑ 106.0	-2.7	+1.4	↑ -0.4
% Expected standard+ Reading	63%	73%	73%	-13%	-3%	-4%
% Higher standard Reading	7%	37%	23%	-18%	+10%	-3%
Scaled Score Reading	100.6	↓ 106.6	↑ 105.8	-2.8	+1.9	↑ +0.1
% Expected standard+ Writing	77%	73%	77%	-6%	-8%	-5%
% Higher standard Writing	10%	↓ 17%	10%	-8%	-4%	-9%
Scaled Score Writing	101.2	101.8	99.6	-0.8	-0.5	-2.8
% Expected standard+ Maths	70%	87%	80%	-7%	+10%	+5%
% Higher standard Maths	13%	27%	40%	-7%	+8%	+20%
Scaled Score Maths	101.1	↓ 105.2	↑ 106.2	-2.7	+0.8	↑ +1.3
% Expected standard+ Grammar, Punctuation & Spelling	77%	83%	77%	-5%	+1%	-4%
% Higher standard Grammar, Punctuation & Spelling	27%	30%	37%	+0%	-6%	+2%
Scaled Score Grammar, Punctuation & Spelling	103.8	106.6	107.0	-1.1	+0.2	+0.1
% Expected standard+ Science	83%	73%	80%	-	-	-

Pupil groups

KS2 Pupil groups performance 2018

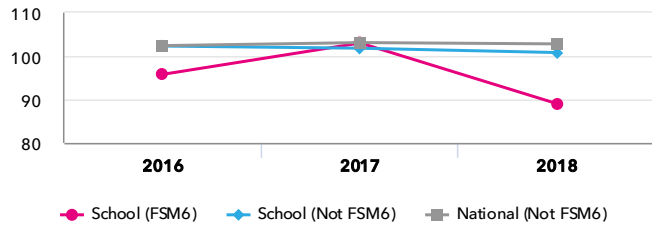
	Pupils		Actual results			Pupil progress		
			Scaled Score Writing	% Expected standard+ Writing	% Higher standard Writing	Scaled Score Writing	% Expected standard+ Writing	% Higher standard Writing
Summary	All Pupils	30	99.6	77%	10%	-2.8	-5%	-9%
Gender	Male	16	98.0	69%	6%	-2.7	-5%	-3%
	Female	14	101.4	86%	14%	-2.8	-4%	-17%
DFE Prior Attainment	Higher attainers	7	104.4	100%	14%	-4.0	+1%	-41%
	Middle attainers	20	101.0	80%	10%	-0.9	-4%	+0%
	Lower attainers	3	79.0 ↓	0%	0%	-12.1	-21%	-0%
Pupil Premium	FSM (in last 6 years)	3	89.0	33%	0%	-7.1	-19%	-1%
	Not FSM (in last 6 years)	27	100.8	81%	11%	-2.3	-3%	-10%
FSM	Not FSM	30	99.6	77%	10%	-2.8	-5%	-9%
FSM Ever	FSM (ever)	3	89.0	33%	0%	-7.1	-19%	-1%
	Not FSM (ever)	27	100.8	81%	11%	-2.3	-3%	-10%
Term of Birth	Autumn Term	12	99.0	75%	0%	-3.8	-6%	-19%
	Spring Term	10	100.8	80%	20%	-1.7	-2%	-5%
	Summer Term	8	99.0	75%	13%	-2.6	-6%	+0%
SEN Group	SEN Support	3	79.0	0%	0%	-14.2	-36%	-1%
	No SEN	27	101.9	85%	11%	-1.5	-1%	-10%
EAL	First language not English	9	102.6	78%	22%	+0.3	+0%	-2%
	First language English	21	98.3	76%	5%	-4.1	-7%	-12%
Mobility	Joined before Y5	30	99.6	77%	10%	-2.8	-5%	-9%
Ethnicity	White	21	98.3	76%	5%	-4.1	-6%	-12%
	Black African	1	91.0	0%	0%	-5.8	-51%	-1%
	Indian	5	105.0	100%	20%	+2.1	+13%	-1%
	Other Asian	1	113.0	100%	100%	+2.8	+0%	+31%
	Any Other	2	97.0	50%	0%	-2.8	-9%	-24%



Disadvantaged pupils

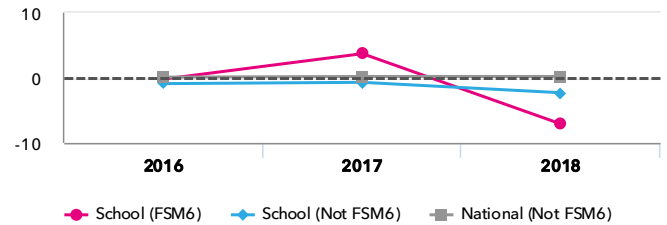
KS2 attainment for disadvantaged pupils 2018

Scaled Score Writing



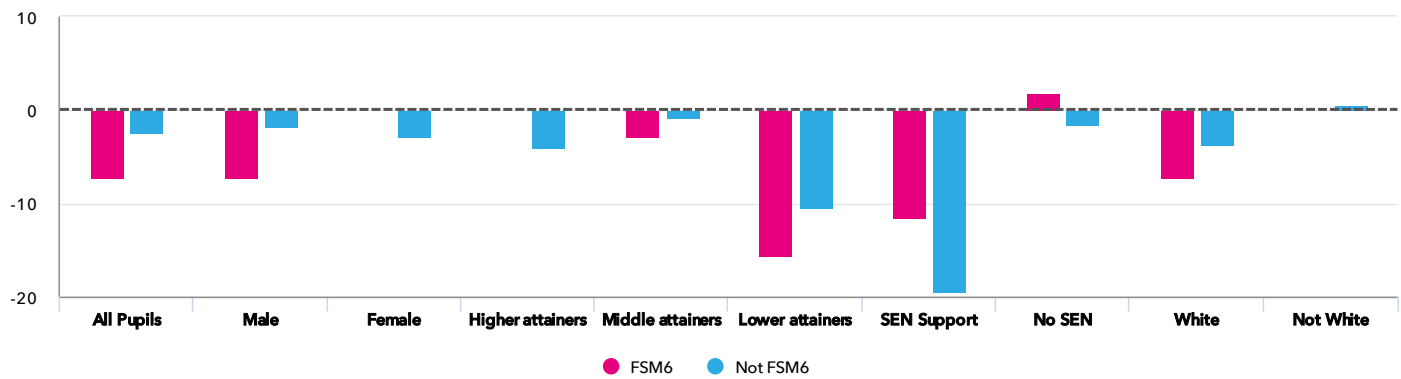
KS2 progress for disadvantaged pupils 2018

Scaled Score Writing



Progress gap

Scaled Score Writing

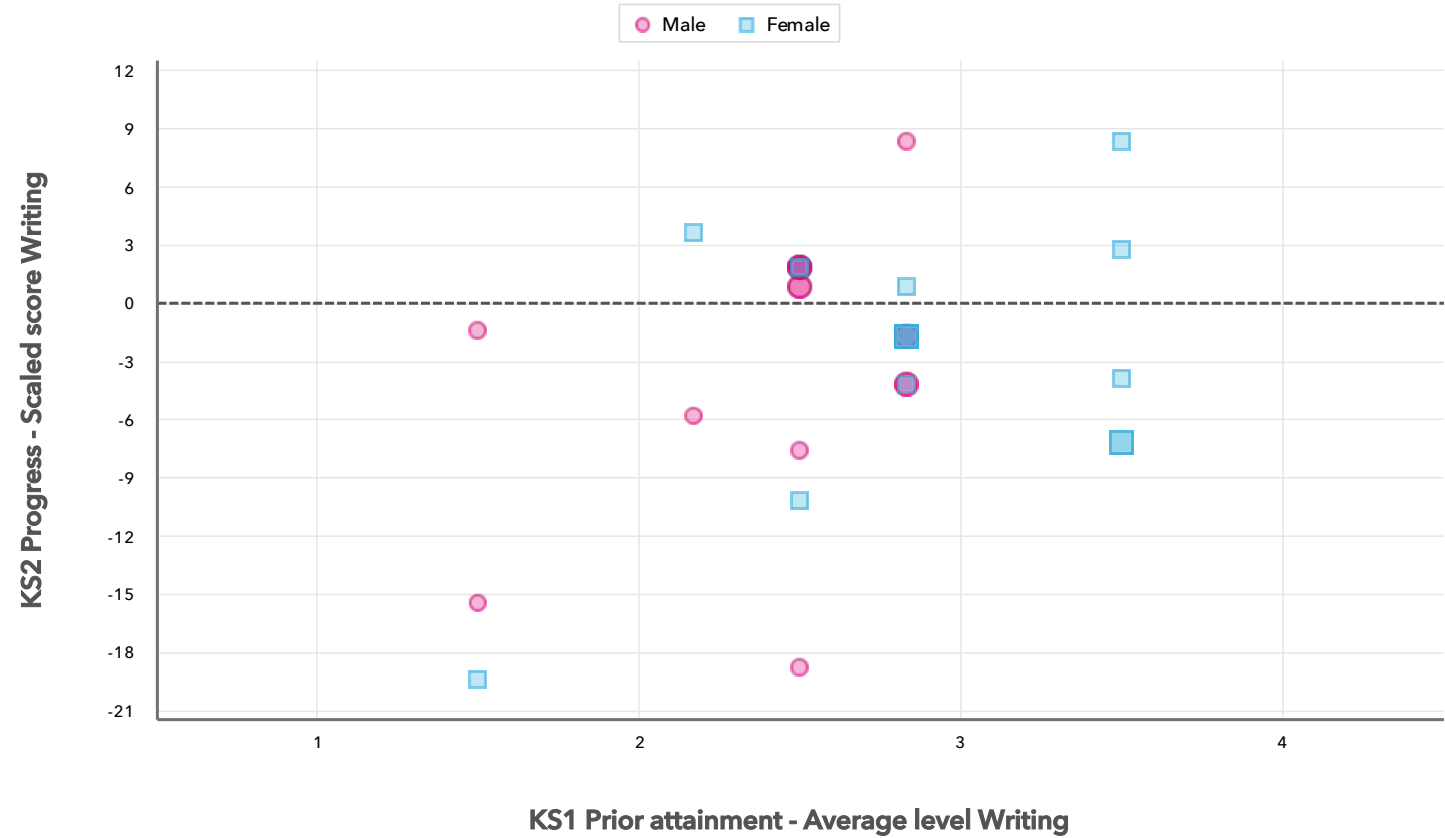


Attainment & progress

Pupils				Attainment			Progress		
				Scaled Score Writing			Scaled Score Writing		
		FSM6	Not FSM6	FSM6	Not FSM6	Gap	FSM6	Not FSM6	Gap
Summary	All Pupils	3	27	89	100.8	-11.8	-7.1	-2.3	-4.8
Gender	Male	3	13	89	100.1	-11.1	-7.1	-1.7	-5.4
	Female	-	14	-	101.4	-	-	-2.8	-
DFE Prior Attainment	Higher attainers	-	7	-	104.4	-	-	-4	-
	Middle attainers	2	18	97	101.4	-4.4	-2.9	-0.7	-2.2
	Lower attainers	1	2	73	82	-9	-15.5	-10.4	-5.1
SEN Group	SEN Support	2	1	82	73	9	-11.5	-19.4	7.9
	No SEN	1	26	103	101.8	1.2	1.8	-1.6	3.4
Ethnic Group	White	3	18	89	99.9	-10.9	-7.1	-3.6	-3.5
	Not White	-	9	-	102.6	-	-	0.2	-

Scatterplot

KS2 Pupil scatterplot 2018 30 pupils highlighted by Gender



Your evaluation – Writing analysis

2018

Key Stage 2

Use this page to assess your performance, evaluate your interventions and summarise key actions for next year. Keep your evaluation clear and focused. Key actions should include timescales and owners.

Strengths

Areas for improvement

Key actions to improve performance

Grammar, punctuation & spelling analysis

Reports included in this section

Attainment & progress

Pupil groups

Disadvantaged pupils

Scatterplot

Confidential: Contains personal information



Key indicators

Scaled Score Grammar, Punctuation & Spelling

% Expected standard+ Grammar, Punctuation & Spelling

% Higher standard Grammar, Punctuation & Spelling



Value added

Achievement is compared with similar pupils nationally. The FFT VA model uses prior attainment, gender and month of birth as a starting point.

Attainment & progress

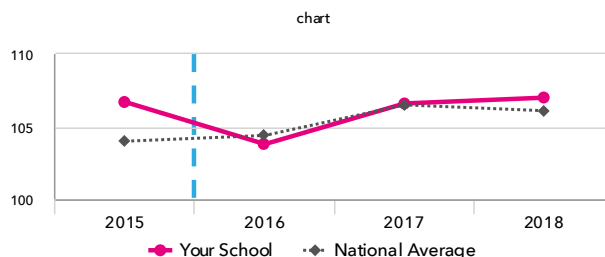
KS2 Attainment 2018

30 pupils

Scaled Score Grammar, Punctuation & Spelling

107.0

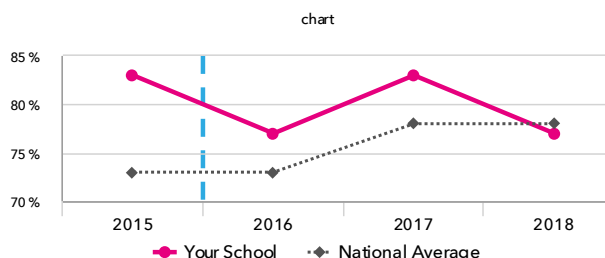
FFT Rank

In line with the national average
(106.1)

% Expected standard+ Grammar, Punctuation & Spelling

77%

FFT Rank

In line with the national average
(78%)

KS2 Progress 2018

30 matched pupils

Scaled Score Grammar, Punctuation & Spelling

+0.1

FFT Rank



In line with the national average (0)

% Expected standard+ Grammar, Punctuation & Spelling

-4%

FFT Rank

In line with the national average
(0%)

KS2 performance summary

	Actual results			Pupil progress		
	2016	2017	2018	2016	2017	2018
Number of Pupils / % Matched	30	30	30	97%	100%	100%
% Expected standard+ (Re, Wr, Ma)	60%	53%	73%	-4%	-11%	+9%
% Higher standard (Re, Wr, Ma)	0%	10%	10%	-7%	+3%	+2%
Average Scaled Score (Re, GPS, Ma)	101.6 ↓	105.9 ↑	106.3	-2.2	+0.9 ↑	-0.4
Average Scaled Score (Re, Ma)	100.9 ↓	105.9 ↑	106.0	-2.7	+1.4 ↑	-0.4
% Expected standard+ Reading	63%	73%	73%	-13%	-3%	-4%
% Higher standard Reading	7%	37%	23%	-18%	+10%	-3%
Scaled Score Reading	100.6 ↓	106.6 ↑	105.8	-2.8	+1.9 ↑	+0.1
% Expected standard+ Writing	77%	73%	77%	-6%	-8%	-5%
% Higher standard Writing	10% ↓	17%	10%	-8%	-4%	-9%
Scaled Score Writing	101.2	101.8	99.6	-0.8	-0.5	-2.8
% Expected standard+ Maths	70%	87%	80%	-7%	+10%	+5%
% Higher standard Maths	13%	27%	40%	-7%	+8%	+20%
Scaled Score Maths	101.1 ↓	105.2 ↑	106.2	-2.7	+0.8 ↑	+1.3
% Expected standard+ Grammar, Punctuation & Spelling	77%	83%	77%	-5%	+1%	-4%
% Higher standard Grammar, Punctuation & Spelling	27%	30%	37%	+0%	-6%	+2%
Scaled Score Grammar, Punctuation & Spelling	103.8	106.6	107.0	-1.1	+0.2	+0.1
% Expected standard+ Science	83%	73%	80%	-	-	-

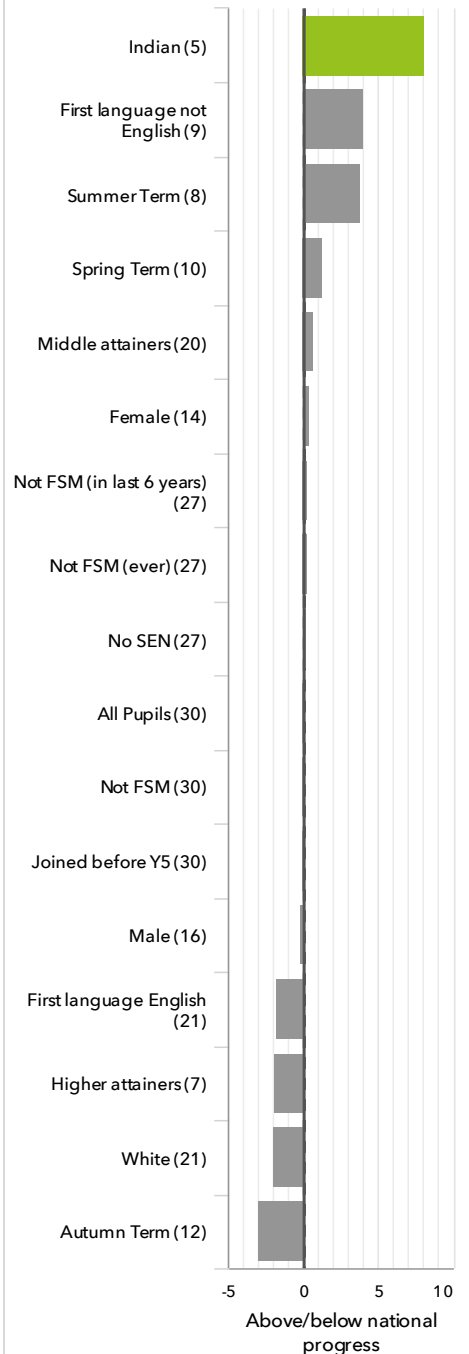
Pupil groups

KS2 Pupil groups performance 2018

		Pupils	Actual results			Pupil progress		
			Scaled Score Grammar, Punctuation & Spelling	% Expected standard+ Grammar, Punctuation & Spelling	% Higher standard Grammar, Punctuation & Spelling	Scaled Score Grammar, Punctuation & Spelling	% Expected standard+ Grammar, Punctuation & Spelling	% Higher standard Grammar, Punctuation & Spelling
Summary	All Pupils	30	107.0	77%	37%	+0.1	-4%	+2%
Gender	Male	16	104.7	69%	19%	-0.2	-6%	-5%
	Female	14	109.6	86%	57%	+0.4	-3%	+10%
DFE Prior Attainment	Higher attainers	7	111.4	100%	57%	-1.8	+1%	-20%
	Middle attainers	20	106.1	80%	35%	+0.8	-3%	+10%
	Lower attainers	3	95.0	0%	0%	-0.2	-22%	-2%
Pupil Premium	FSM (in last 6 years)	3	99.0	33%	0%	-3.5	-20%	-8%
	Not FSM (in last 6 years)	27	107.6	81%	41%	+0.3	-2%	+3%
FSM	Not FSM	30	107.0	77%	37%	+0.1	-4%	+2%
FSM Ever	FSM (ever)	3	99.0	33%	0%	-3.5	-20%	-8%
	Not FSM (ever)	27	107.6	81%	41%	+0.3	-2%	+3%
Term of Birth	Autumn Term	12	103.5	75%	17%	-3.0	-5%	-17%
	Spring Term	10	109.1	80%	50%	+1.3	-2%	+10%
	Summer Term	8	110.3	75%	50%	+3.8	-6%	+20%
SEN Group	SEN Support	3	98.0	0%	0%	-3.1	-38%	-4%
	No SEN	27	107.3	85%	41%	+0.2	-1%	+3%
EAL	First language not English	9	109.8	78%	67%	+4.0	+1%	+29%
	First language English	21	105.7	76%	24%	-1.8	-6%	-10%
Mobility	Joined before Y5	30	107.0	77%	37%	+0.1	-4%	+2%
Ethnicity	White	21	105.4	76%	24%	-2.0	-6%	-9%
	Black African	1	97.0	0%	0%	-2.5	-50%	-5%
	Indian	5	114.4 ↑	100%	80%	+8.1 +	+13%	+44%
	Other Asian	1	117.0	100%	100%	+2.0	+0%	+14%
	Any Other	2	104.0	50%	50%	+0.3	-10%	+13%

High-to-low chart

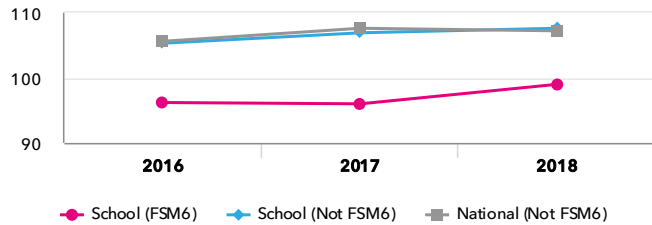
Pupil progress in Scaled Score Grammar, Punctuation & Spelling visually from high to low



Disadvantaged pupils

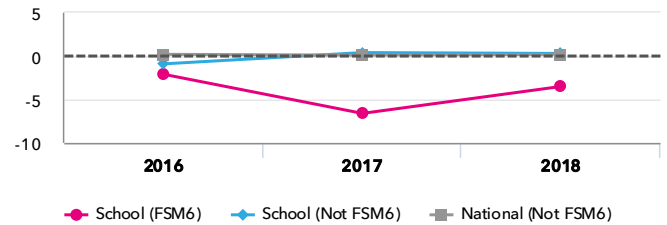
KS2 attainment for disadvantaged pupils 2018

Scaled Score Grammar, Punctuation & Spelling



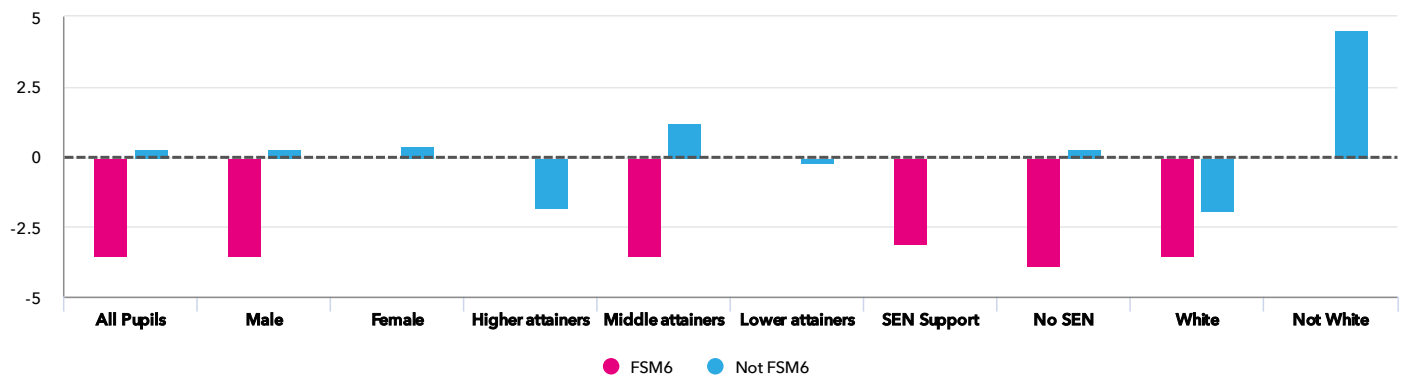
KS2 progress for disadvantaged pupils 2018

Scaled Score Grammar, Punctuation & Spelling



Progress gap

Scaled Score Grammar, Punctuation & Spelling



Attainment & progress

Pupils				Attainment			Progress		
				Scaled Score Grammar, Punctuation & Spelling			Scaled Score Grammar, Punctuation & Spelling		
		FSM6	Not FSM6	FSM6	Not FSM6	Gap	FSM6	Not FSM6	Gap
Summary	All Pupils	3	27	99	107.6	-8.6	-3.5	0.3	-3.8
Gender	Male	3	13	99	105.6	-6.6	-3.5	0.3	-3.8
	Female	-	14	-	109.6	-	-	0.4	-
DFE Prior Attainment	Higher attainers	-	7	-	111.4	-	-	-1.8	-
	Middle attainers	2	18	99	106.8	-7.8	-3.5	1.2	-4.7
	Lower attainers	1	2	-	95	-	-	-0.2	-
SEN Group	SEN Support	2	1	98	-	-	-3.1	-	-
	No SEN	1	26	100	107.6	-7.6	-3.9	0.3	-4.2
Ethnic Group	White	3	18	99	106.1	-7.1	-3.5	-1.9	-1.6
	Not White	-	9	-	110.4	-	-	4.5	-

Scatterplot

KS2 Pupil scatterplot 2018 30 pupils highlighted by Gender



Your evaluation – Grammar, punctuation & spelling analysis

2018

Key Stage 2

Use this page to assess your performance, evaluate your interventions and summarise key actions for next year. Keep your evaluation clear and focused. Key actions should include timescales and owners.

Strengths

Areas for improvement

Key actions to improve performance