

Topic – Friday 5th March



Physical
Geographical
Features

Human
Geographical
Features



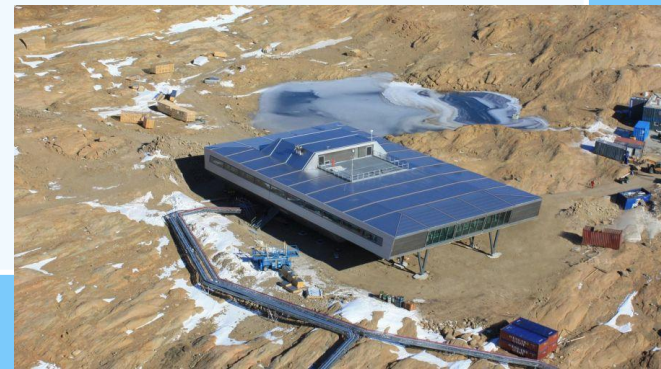
LO: To understand human geographical features.

Human and physical features are things that you can see all around you.

- Physical features like seas, mountains and rivers are natural. They would be here even if there were no people around.



- Human features like houses, roads and bridges are things that have been built by people.



Human Geographical Features

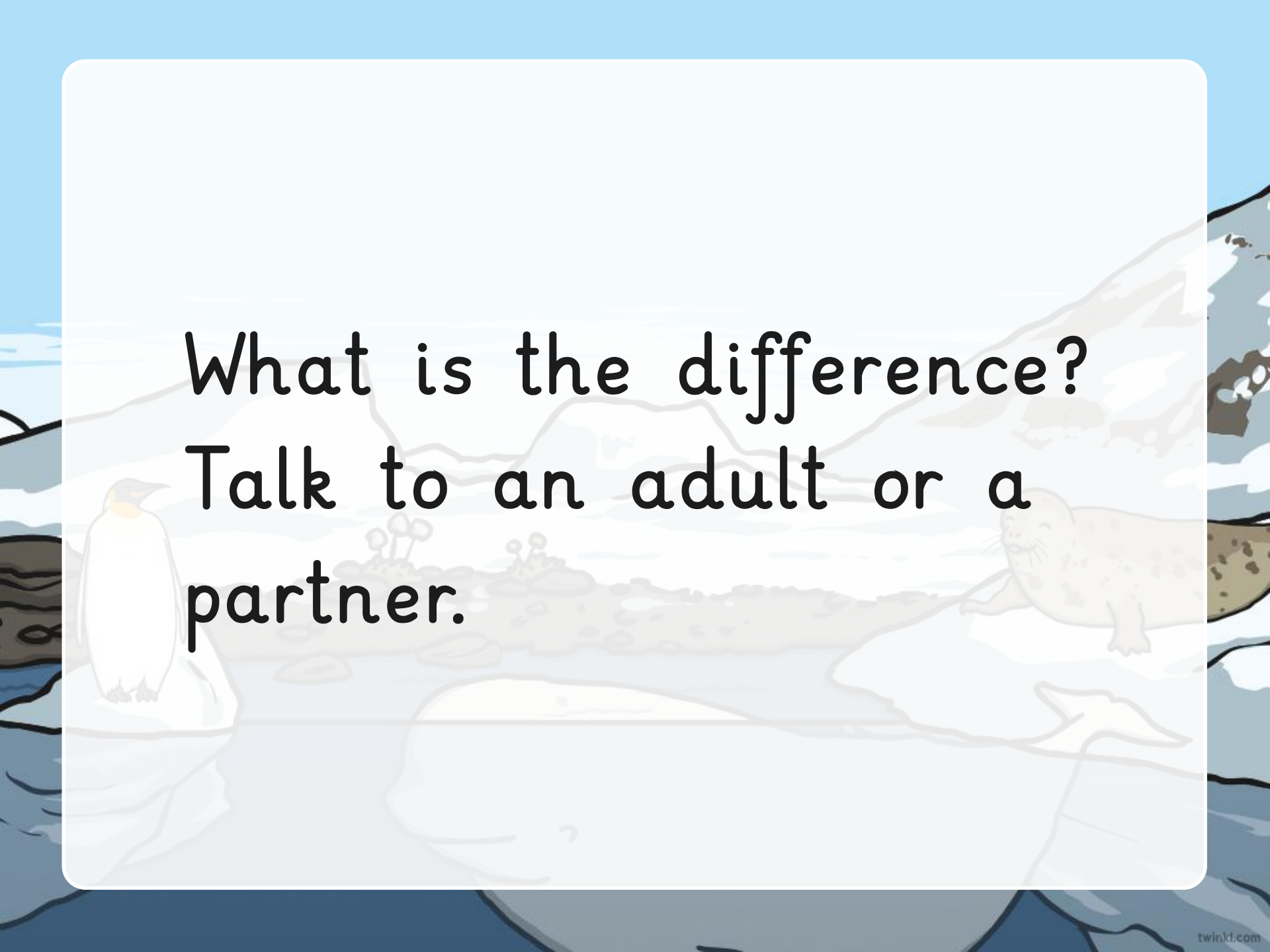


As we look around, these are the things that we see that have been created by humans.

Physical Geographical Features



As we look around, these are the things that we see that have been created by nature.

The background is a stylized illustration of an icy, coastal environment. On the left, a penguin stands on a piece of ice. In the center, there's a small patch of land with some low-lying plants. On the right, a seal is resting on a large ice floe. The sky is a light blue, and the water is a darker blue. The entire scene is framed by a white, rounded rectangular border.

What is the difference?
Talk to an adult or a
partner.

Today we are going to be comparing the Human Features of Antarctica and comparing them to Worcester



Populations...

Worcester

The number of people that live in Worcester is:

592,158

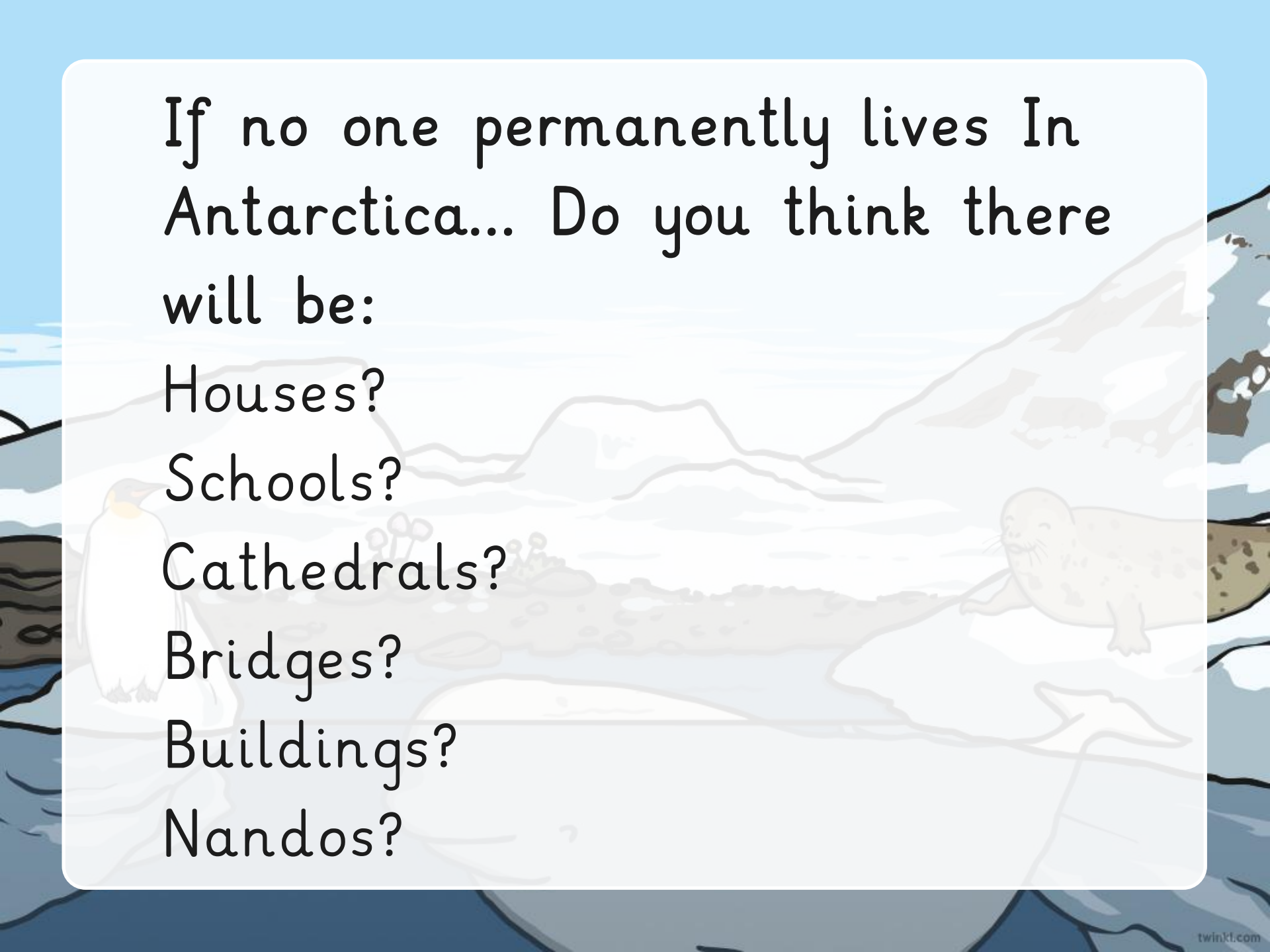
Antarctica

The number of people that live in Antarctica is:

0 permanent residents.

Antarctica is known for being the highest, driest, coldest and windiest continent on earth.

Although there are no permanent residents or citizens of Antarctica, many people do live in Antarctica each year. Up to 5,000 scientists are living in Antarctica at the height of summer (October-April), along with around 45,000 tourists visiting on expedition cruise ships. In winter, the number drops to approximately 1,000 people, just scientific staff.

A stylized illustration of an Antarctic landscape. In the foreground, a penguin stands on the left and a seal is on the right. The background shows snow-covered mountains and a blue sky. The text is overlaid on a white rounded rectangle in the center.

If no one permanently lives In
Antarctica... Do you think there
will be:

Houses?

Schools?

Cathedrals?

Bridges?

Buildings?

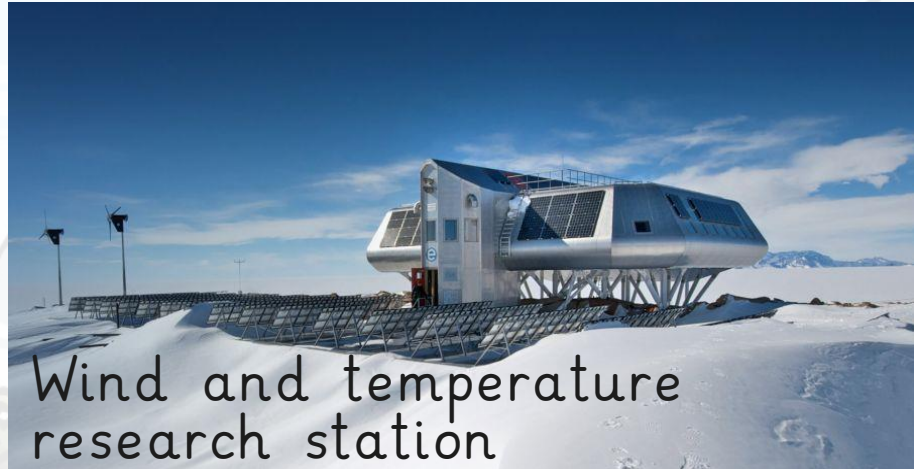
Nandos?

Antarctica's Human Geographical Features

Polar research station



Wind and temperature research station

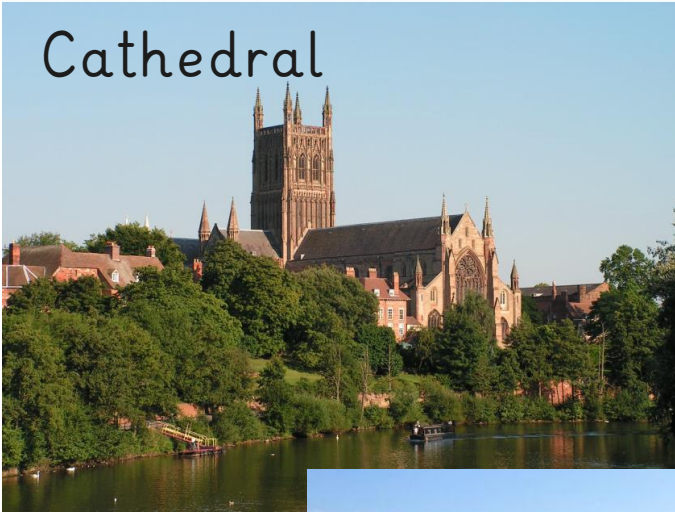


Houses for scientists to stay.



Worcester's Human Geographical Features

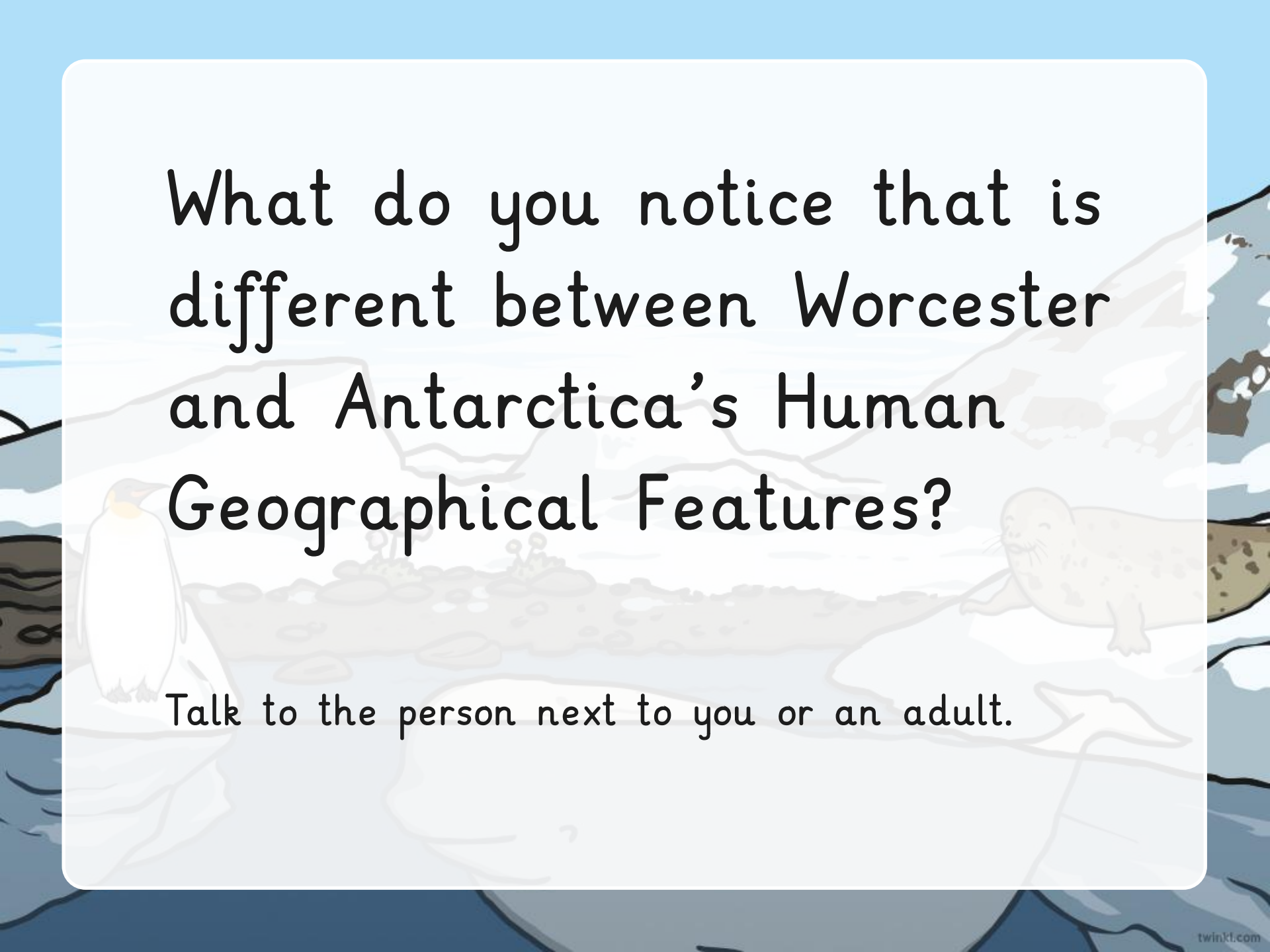
Cathedral



City Centre Bridge



Our school



What do you notice that is different between Worcester and Antarctica's Human Geographical Features?

Talk to the person next to you or an adult.

Your task today:

Using google earth - <https://earth.google.com/web/@-59.33369864,5.34891187,-13335.65637176a,22629590.85276604d,35y,0h,0t,0r>

Can you find Human Geographical Features in Antarctica and in Worcester.

Date: _____

LO: To understand human geographical features.

Using Google Earth, draw and label Human Geographical features you find in Antarctica and Worcester.



Antarctica's Human Features	Worcester's Human Features

Video to support using Google Earth

<https://www.youtube.com/watch?v=F8tzT9hQXko&feature=youtu.be>