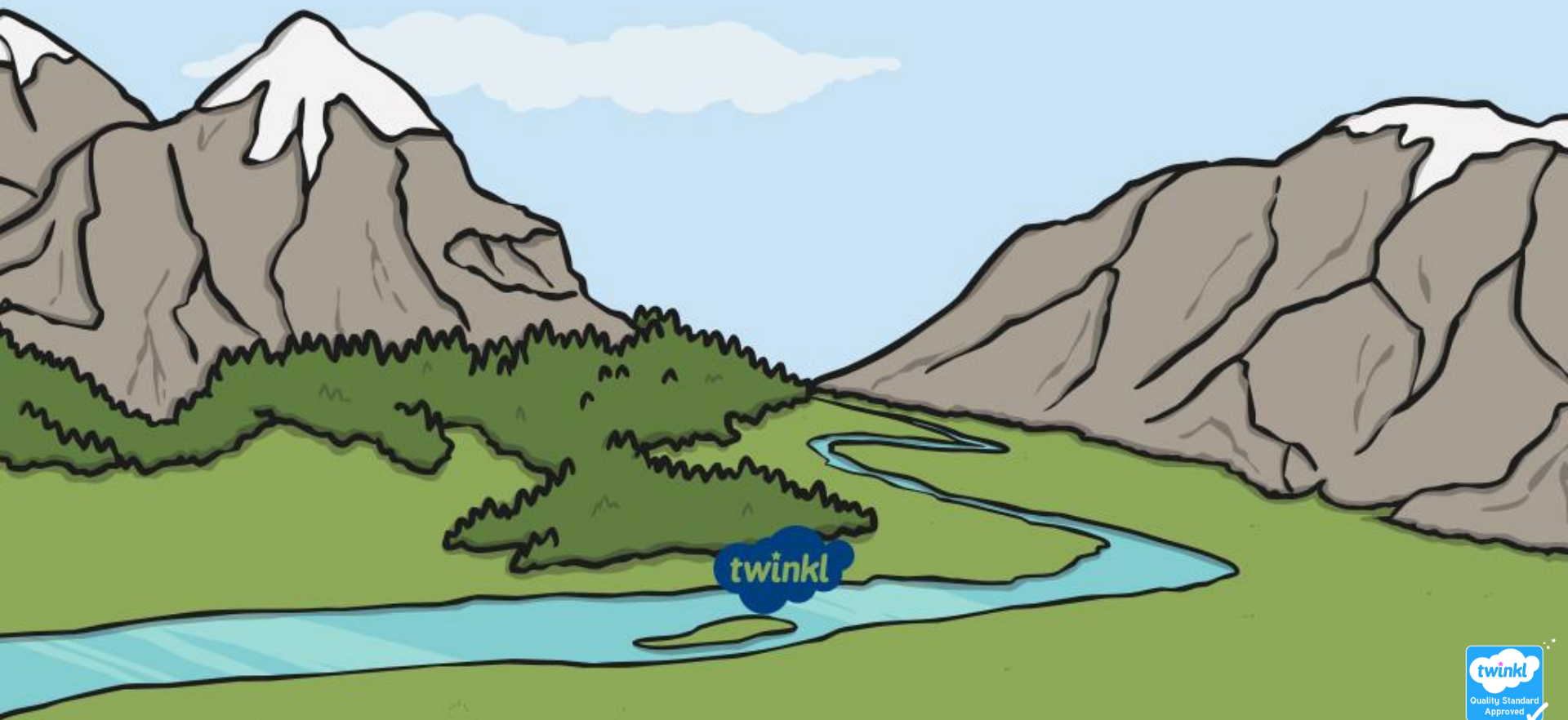


# The /ee/ Sound Spelt with 'ey'



# The Sound /ee/

We have seen that the sound /ee/ can be spelt in different ways.

The sound /ee/ can be spelt with 'ee' (as in **see**), with 'e-e' (as in **complete**) or with 'ea' (as in '**scream**').

Using your finger, can you write one of the ways to spell the sound /ee/ on a partner's back? Can they tell which letters you have written?

miss

hiss

less

# Spelling /ee/ with 'ey'

The sound /ee/ can also be spelt with the 'ey' letter pattern.  
The 'ey' letter pattern is usually used to spell the /ee/ sound at the **end** of words.



key



donkey



chimney



valley



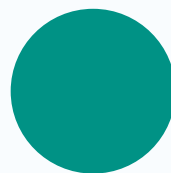
trolley



turkey



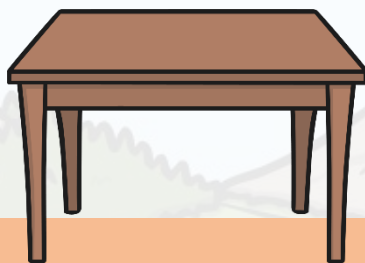
parsley



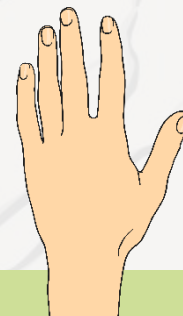
journey



Can you air write 'ey' with your finger?



Using your finger, can you write 'ey' on your table or the carpet?



Using your finger, can you write 'ey' on the back of your hand?

Here are this week's spellings to practise.

key

trolley

donkey

turkey

monkey

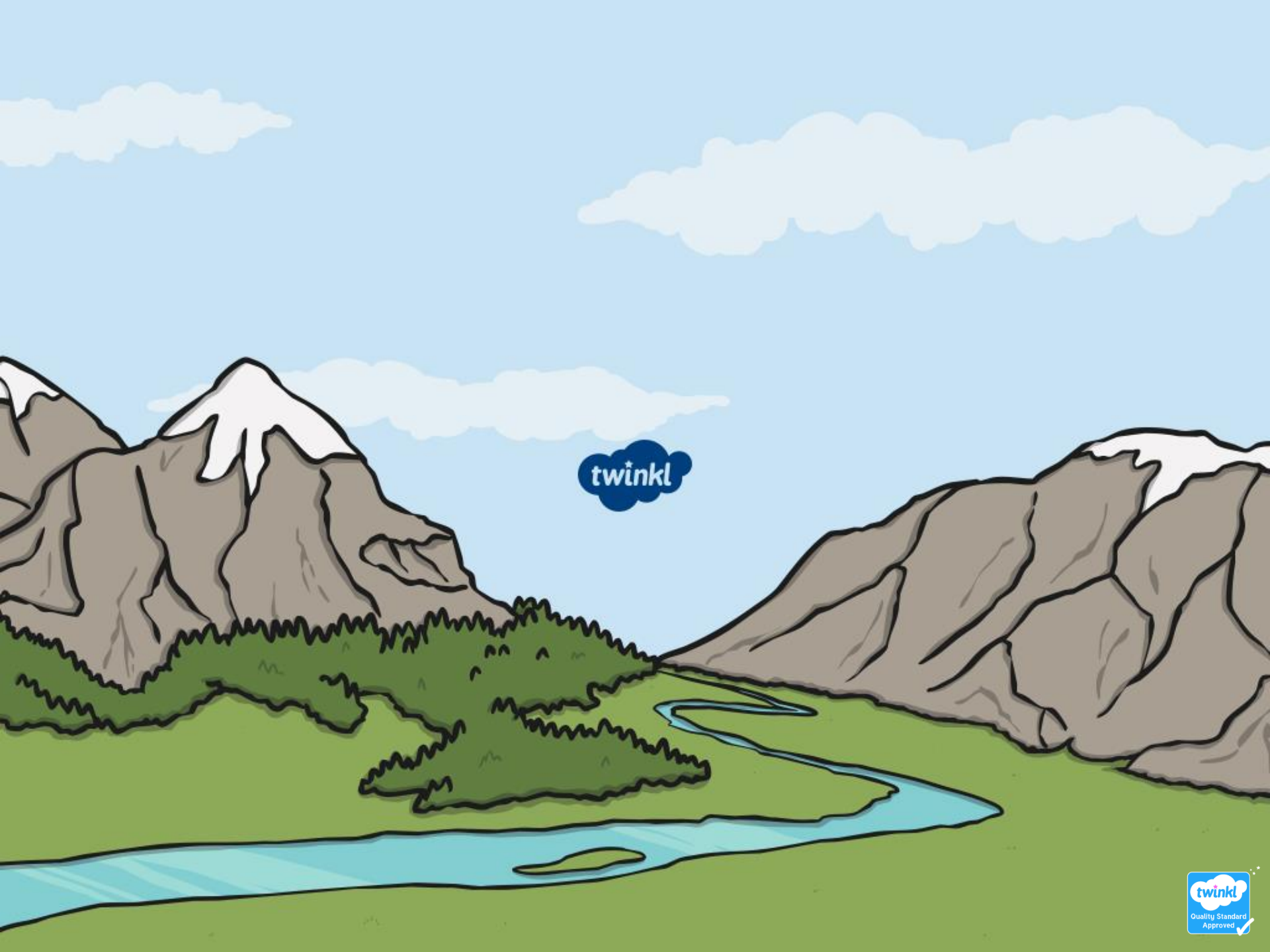
hockey

chimney

parsley

valley

journey



twinkl