

# Welcome to Governance and St Nicholas School



**St Nicholas School**  
**Holm Oak Close, Canterbury, Kent**  
**01227 464316**

<https://www.st-nicholas.kent.sch.uk/>



# Contents

---

## 01. Who are we?

Brief overview of the governing team.

---

## 02. Our Values

An overview of St Nicholas values and what we are working towards

---

## 03. St Nicholas School

Key information about how the school runs, and the sites we cover.

---

## 04. Key Documents and Information

Key information and documents to support your governance journey.

---

## 05. Actions

A list of initial steps to follow once joined.



# Governors

Co-Opted Governors



**Nigel**  
*Chair*  
Training & Development



**Sharon**  
*Vice-Chair*  
Finance



**Heidi**  
Safeguarding & Wellbeing



**Angela**  
EYFS



**Penny**  
SEND



**Louise**  
Careers & Wellbeing



**Joe**  
Health & Safety



**Liz**



**Jesse**  
Safeguarding



**Richard**  
*Headteacher*

Parent Governors

Vacancy

Vacancy

Staff Governor



**Emma**

You can read more information about our governors here: <https://www.st-nicholas.kent.sch.uk/governors>



# Our School Aims



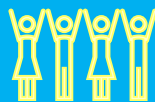
# Our School Aims



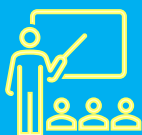
Give each child a sense of personal value, promoting self-confidence and self-esteem



Provide a secure yet challenging and happy environment



Prepare our students for an active life in society being as independent and autonomous as possible



Provide a broad, balanced and relevant curriculum with creativity to meet the needs of the pupils.



Develop pupils abilities in Basic Skills, Independence, Life, Physical, Health, Leisure and Work Skills.



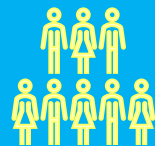
Ensure success, achievement and progression for all pupils



Create the opportunity and the environment for the experience of childhood to reach all pupils



Address the needs of the whole child and support their social and emotional development



Support all staff and value their contribution to the educational process







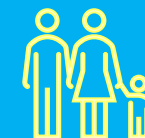
# Our School exists to...



Support students with Special Educational Needs to maximise their learning and social development within the school, home and the wider community



Provide teaching and learning in the most inclusive environment



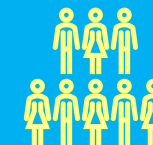
Work in close partnership with parents, carers and families



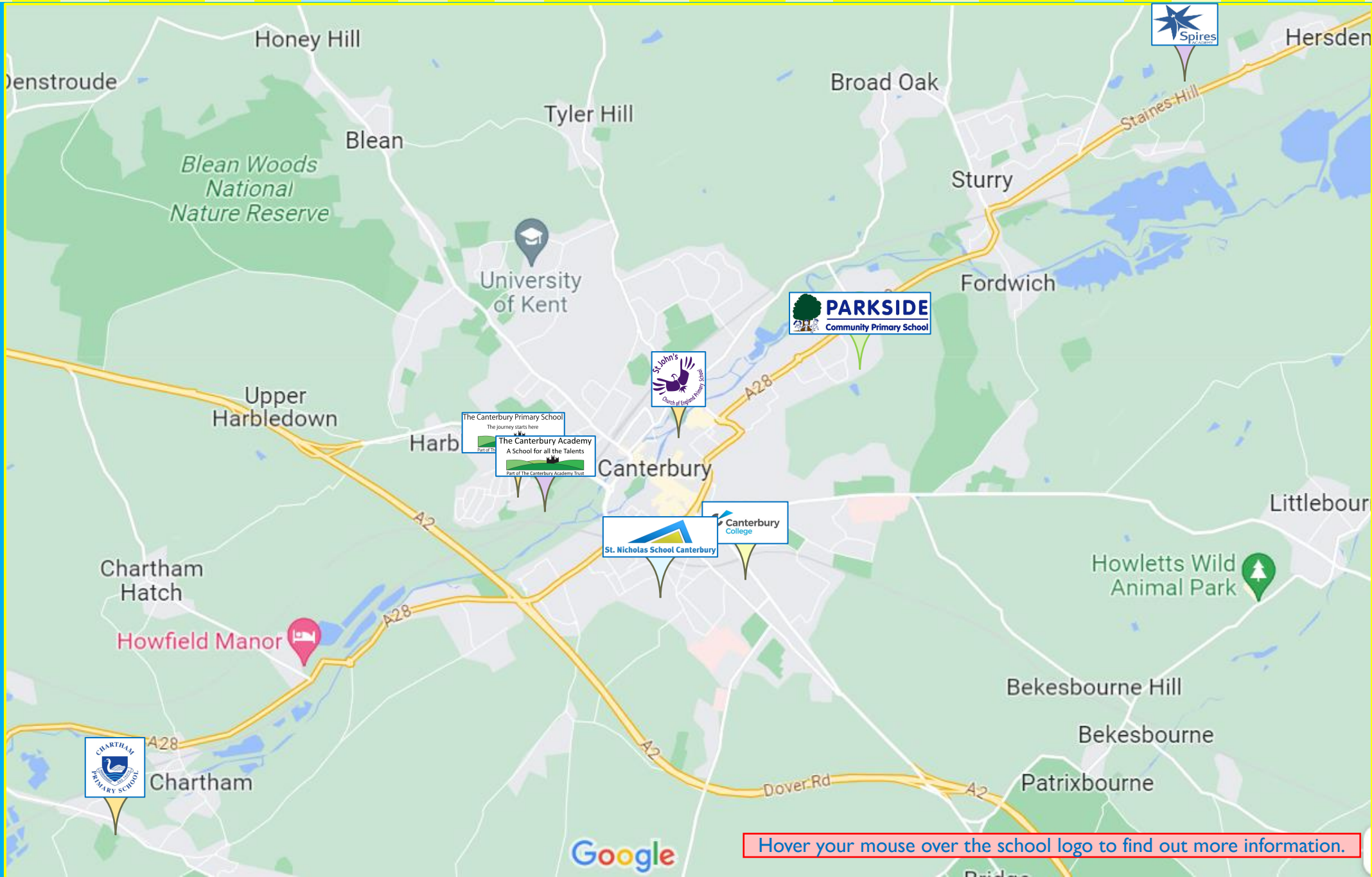
Raise educational standards through individual Education, Health and Care Plans by providing clear targets for each student



Ensure access to high quality teaching supported by a multidisciplinary team utilising a range of specialist resources and facilities.



Support the professional development of all



Hover your mouse over the school logo to find out more information.



# Key Information

---

## Governance Handbook and Competency Framework

Here is a link to the DfE's [Governance Handbook and Competency Framework](#). Please have a read.

## National Governance Association

As a governing board we have a Gold membership to the National Governance Association <https://www.nga.org.uk/> This entitles us to the use of their website, certain training availability and the 'Welcome to Governance' handbook which all new governors are provided with for free!

## Governor Contact Details

You will be provided with a school email address which we encourage you to use for all governor business. We also have a 'WhatsApp' group which the Chair will add you too once you have arrived.

## Training and CPD

We also have a membership to The Education People <https://www.theeducationpeople.org/> a Kent based education service who will provide you with your Governor Induction Training. You will also be given access to other providers for safeguarding training and CPD.

## School Information

The school website <https://www.st-nicholas.kent.sch.uk/> as well as the Governor page <https://www.st-nicholas.kent.sch.uk/governors> are full of useful information. You can find out lots of useful information on the school website, have an explore in your free time, and any of the governors would be happy to answer any questions you may have.

## Governor Hub

Provides a great resource for training, and up to date information.

Most importantly this is the platform we use to store all of our documentation, including meeting minutes, school development plan, head teacher reports, meeting timetable etc... so once your account is up and running get exploring!



# Actions



## 1. School Email address

Ask the Chair for the contact details of the governing board's clerk. As well as the Chair of Governors they will assist with all the necessary paperwork and checks that need to take place as part of the induction process.

## 4. Governor Hub Account

Once access has been provided, please familiarise yourself with the Governor Hub and confirm your contact detail and complete your declarations.

## 2. Arrange a DBS check

## 3. Pen Portrait

Please provide the school with a pen portrait (examples of which can be found on the governor page of the website)

**Welcome and ENJOY!**

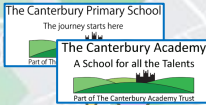


St Nicholas School is a special school for 355 pupils aged 4-19 with severe, profound and complex learning needs. St Nicholas School operates on several sites and works closely with partner schools and Canterbury College to provide a wide range of opportunities for all its pupils.

St Nicholas School is a friendly, welcoming place where everyone is encouraged to do their best and work towards achieving their potential. We provide opportunities for all children to grow and develop and we acknowledge them all as unique individuals. Our school is a learning community that includes and values everyone, where we all work together in a supportive caring and professional way.



Most of our Early Years provision (4-6 year olds) is located at Parkside Primary School. Caterpillars, our Specialist Intervention Nursery is also located here.







We have one class based at St Johns Primary School for our KS1 aged pupils.





We have two classes based at Chartham Primary School for our KS2 aged pupils.



Chartham





### The Canterbury Primary School

The journey starts here



We have two primary classes based at Canterbury Primary School.

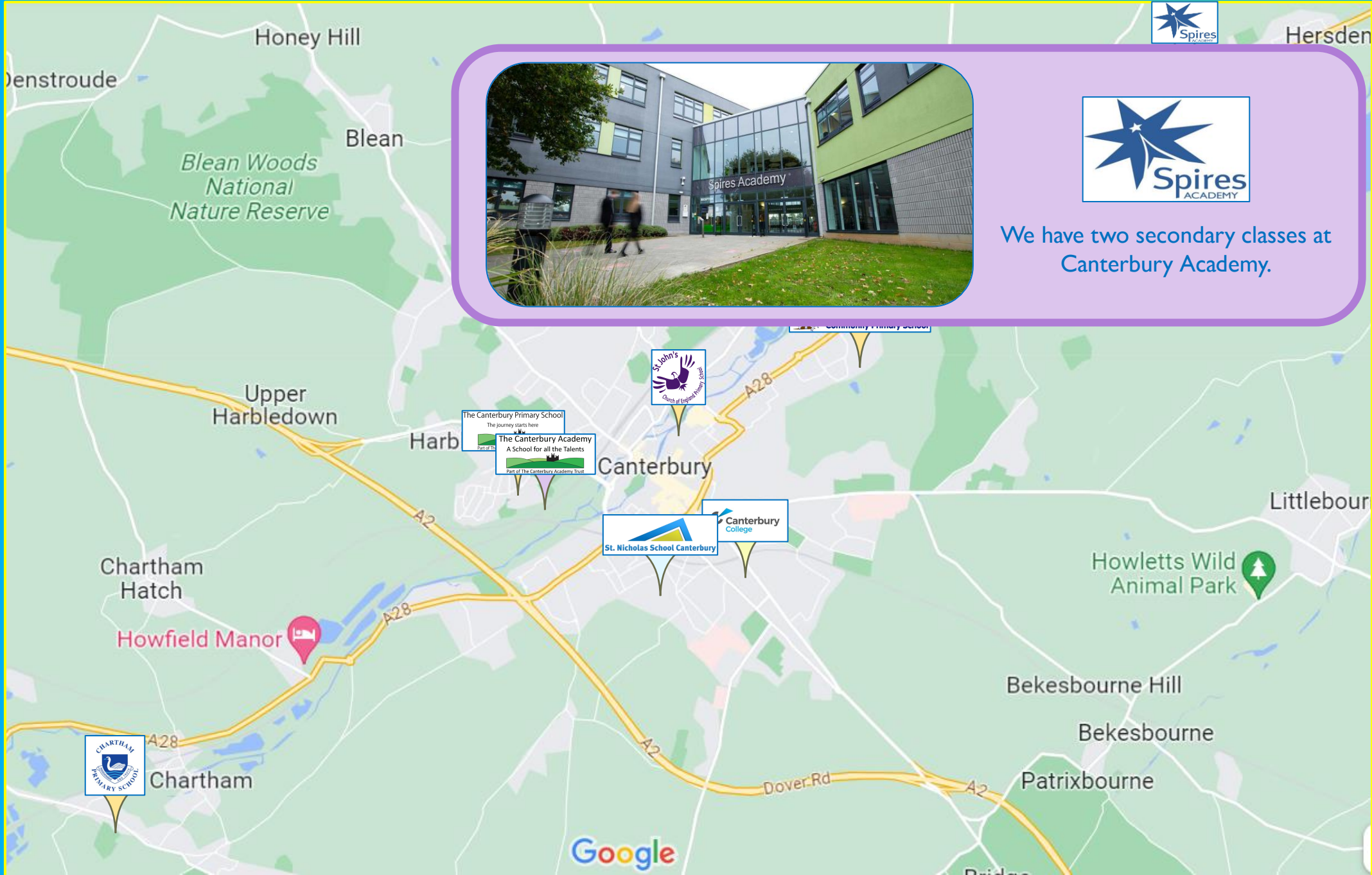




The Canterbury Academy  
A School for all the Talents  
  
Part of The Canterbury Academy Trust

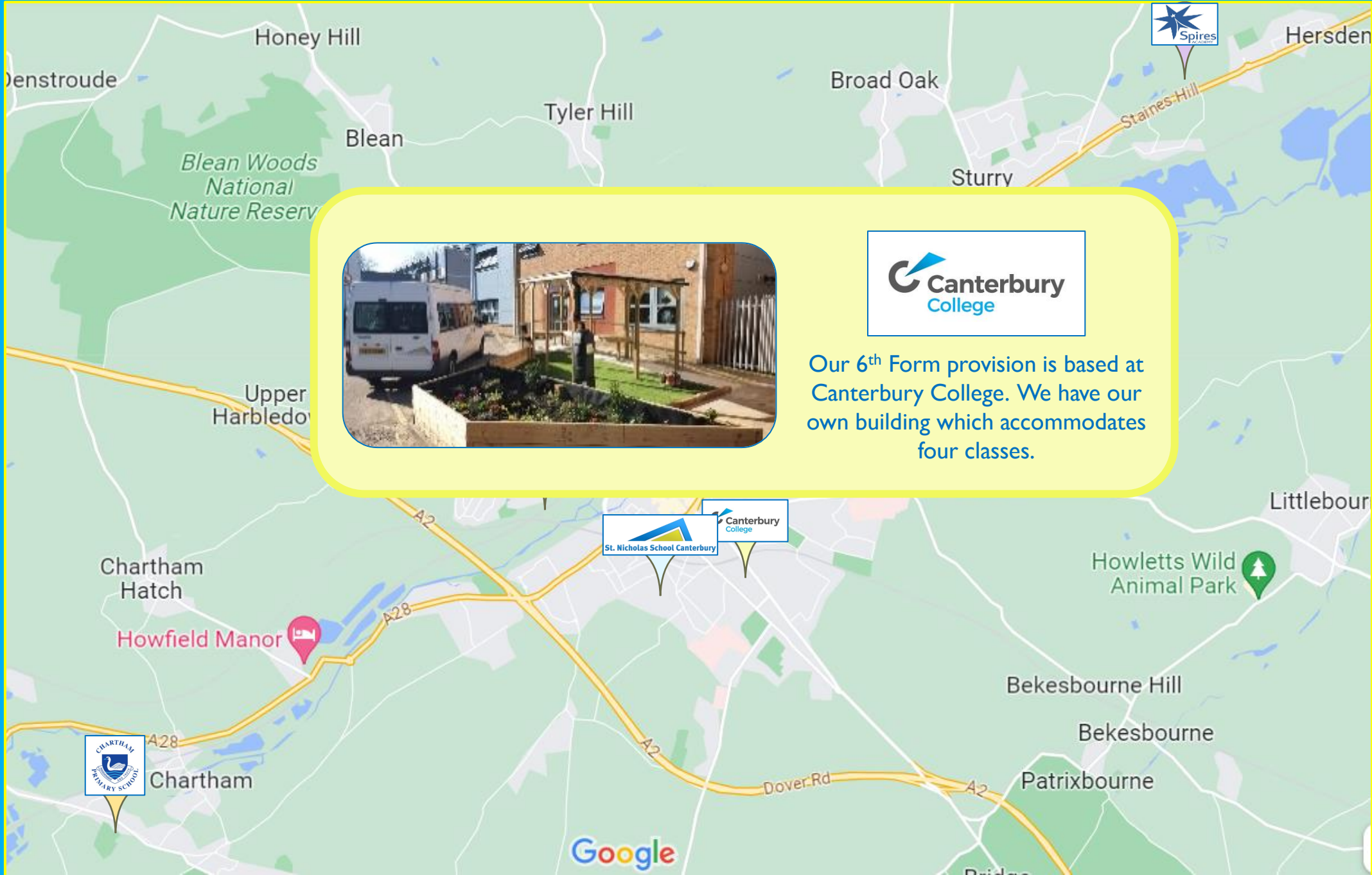
We have four secondary classes at  
Canterbury Academy.





We have two secondary classes at Canterbury Academy.





Our 6<sup>th</sup> Form provision is based at Canterbury College. We have our own building which accommodates four classes.