



# STLS Newsletter Term 6

Welcome everyone to our final newsletter of this academic year.

A valued member of our team has left, Karen Scott. We would like to thank her for all her hard work which was appreciated.

We would also like to introduce you to our new C&L teacher, Judith Goodrich who will be joining us in September.

## SCHOOLS TRANSITION EVENT

**When** - 23rd June 2022 10.00am until 2.00pm

**Where** - Canterbury Academy Primary Site in the PLCC Hall.

We have organised this forum for Secondary school SENCOs to meet Primary SENCOs and discuss the needs of key pupils and set diary dates.

This is also an opportunity for SENCOs to network and reconnect with each other.

STLS and PEOs will also be in attendance.

Refreshments are available.

We look forward to seeing you - [e.harrison@stns.org.uk](mailto:e.harrison@stns.org.uk)



## TRANSITION CHARTER - [click here for link](#)

Sets out expectations & actions for transition for: Schools & other education settings, Local Authority and Specialist Teachers & support organisations.

In Kent this year the number of pupils with EHCPs has seen a huge increase (in the last 8 years the number has more than doubled). There has been a significant increase in SEMH/ASD as a primary need. There are more than 1300 pupils with EHCPs in year 6.

Transition Group set up to implement & review the Transition Charter and develop best practice guidance to reflect the spirit of the charter.

- \* Cheryl Chalkley (Headteacher of Mersham Primary School) - [Headteacher@mersham.kent.sch.uk](mailto:Headteacher@mersham.kent.sch.uk)
- \* Jon Richardson (Asst Principal at New Line Learning Academy) - [jrichardson@newlinelearning.com](mailto:jrichardson@newlinelearning.com)
- \* Matthew Tithecott (Asst Principal at Simon Langton Grammar School) - [mtithecott@thelangton.kent.sch.uk](mailto:mtithecott@thelangton.kent.sch.uk)

## TOGETHER WITH PARENTS (TWP) - a new commissioned service.

The new service will support parents and carers of children and young people that have either received diagnosis, are awaiting diagnosis or considering a referral to the Neurodevelopmental (ND) Pathway, to build resilience and self-help strategies.

The model will be delivered in two phases:

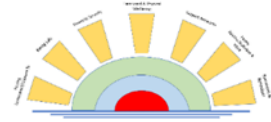
**Phase One:** (From 9th May 2022) - Provision will focus on supporting all those parents and carers of children and young people that are currently on the Waiting List for an ND diagnosis and are in receipt of an Integrated Children's Service intervention:

Open Access , Early Help Units, Social Work Teams, Adolescents Teams, Youth Justice Teams.

**Phase Two:** (Date tbc) – Will extend eligibility to all families that are either on the ND Pathway or are being considered for a referral onto the pathway.

The service will deliver the following offer countywide (blended face to face and virtual):

- \* 1:1 Support Sessions with parents and carers.
- \* Workshops focusing on key shared family issues, e.g., sleep, communication, behaviour, etc.
- \* Self-help parent/carer Peer Support Groups.
- \* Evidence-based programmes (Cygnet and Incredible Years)
- \* Area marketplace events 'Understanding Autism & ADHD' in partnership with Kent & Medway CCG
- \* Signposting to supporting materials such as videos, books, etc. and where appropriate other local organisations.



**Contact:** Nick Burden (Together with Parents Service Co-Ordinator) - Tel: 03000 419850 - Email: [nick.burden@kent.gov.uk](mailto:nick.burden@kent.gov.uk) - please contact Nick with any queries.

Link to Referral Form: [CLICK HERE](#)



**SEND Information Hub** - [CLICK HERE](#) for a list of services available.

**PRIDE MONTH 2022** - [CLICK HERE](#) for some great teaching resources.



**Children's Art Week - 28th June-17th July** is a UK-wide programme that gives children and young people the opportunity to get involved in a wide range of art activities - [CLICK HERE](#)

## For the Attention of Reception Class Teachers and SENCos

Last year we piloted a 'Reception Class Project' with some schools and received positive feedback from those who took part.

We would now like to widen this opportunity to all Reception Classes in the Canterbury District.

This will involve a virtual meeting to be held during T2, supported by STLS and hopefully E&I. Its purpose is to allow schools to discuss vulnerable or SEND children within their new Reception Class Cohort. These children may or may not be known to us. We can discuss strategies and consider training opportunities that would support the children's needs.

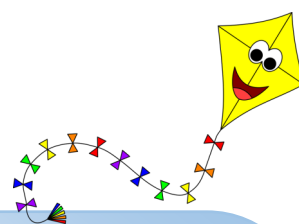
If you are interested in taking part, please contact either Sue Fisher ([s.fisher@stns.org.uk](mailto:s.fisher@stns.org.uk)) or Ali Goodsell ([a.goodsell@stns.org.uk](mailto:a.goodsell@stns.org.uk)) by Friday 8th July 2022 to register your interest in taking part.

**SENSORY FOOD EDUCATION** - Sensory food education is a fantastic way of helping children build a positive relationship with food and eating. Please see the two links below:

- ♦ [Gov.uk website.](#)
- ♦ [Taste Education website.](#)



## EARLY YEARS ZONE



### **STLS TRAINING - TERM 6**

- ♦ Small Steps for Great Gains – Supporting Complex 2 Year Olds in your Setting

This has been **CANCELLED**.

- ♦ Using Language through Colour in the Early Years

Cost - £18 per person - Venue – St Nicholas's Training room

**5th July - 10am-12pm**

### **Free CPD short course from ICAN - [CLICK HERE](#)**

This free online short course is a great place to start learning about children's speech, language and communication development. It looks at how you can support the development of these skills in your setting, and how to spot children and young people who might be struggling.

This popular course is tailored to the needs of practitioners working across all the different education phases. You choose the pathway relevant to your area of work: early years, primary, secondary or further education.

### **Free Autism Training**

Funded by the UK Government via the Education and Skills Funding Agency. Regulated by Ofqual. Accredited by NCFE. [CLICK HERE](#) to go to the website.

**Information on Sensory Processing** - [CLICK HERE](#).



### EARLY YEARS SENCO FORUM:

Tuesday 28th June at Canterbury Academy - 9.30am

Focus on a proposal for the Attention Autism Training Package  
2022/2023

### Reminders:

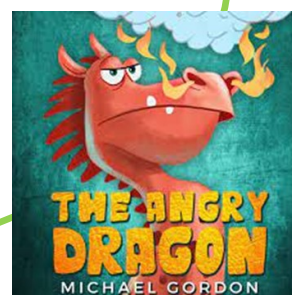
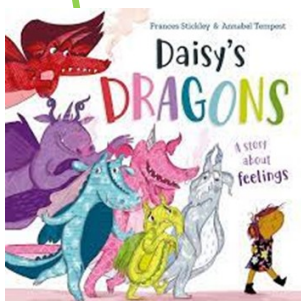
- \* Coffee Mornings & Nursery and Year R reviews are still available alongside the Reception Class Review meetings that will take place in Term 2.
- \* Make sure you use the MAT, the Updated Personalised Plans and LIFT Request forms that reflect the CURRENT EYFS 'levels'. The MAT info will also be required for SENIF applications.

### New feature!

#### Books that Sue Recommends:

**Daisy's Dragons** and **The Angry Dragon** are aimed at helping children to understand their emotions.

As always - please read the book before purchasing.



#### LIFT ADVICE

- \* While we have had to limit the number of cases brought by nurseries to 2 per LIFT due to high levels of requests, this doesn't limit the number of children that can be brought over the academic year.
- \* We are committed to supporting children with complex needs and therefore children can be brought to alternative LIFTs if we have the capacity.
- \* The 'What To Do Before Coming To LIFT Checklist' is now on our website - [CLICK HERE](#)
- \* Copies of Targeted or Personalised Plans/BPG checklists must be sent with LIFT referral paperwork.
- \* Please remember to complete referrals using the most recent form also available [HERE](#) and email referrals to [lift@stns.org.uk](mailto:lift@stns.org.uk) or if using Egress: [m.rapley@stns.org.uk](mailto:m.rapley@stns.org.uk)
- \* Make sure you use the MAT, the updated personalised plans and forms that reflect the CURRENT EYFS levels of the children you wish to be discussed.
- \* In order to ensure the LIFT process is effective for all, the correct paperwork as detailed above is essential to secure a place on the agenda.