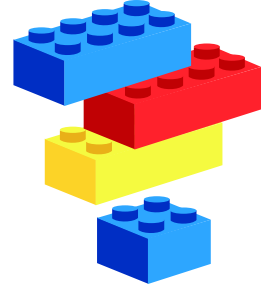




# EARLY YEARS

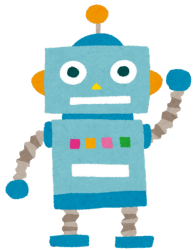
## Terms 1 & 2



Welcome back to a new year and new term; we hope you feel a little bit refreshed and ready for what the new academic year may bring.

### REMEMBER!

- Any training you require needs to be requested via the booking request form on our website, on the following page: [Click Here](#)  
It also contains our training schedule for the year.
- We will still be offering In-nursery reviews, coffee mornings & Reception SEN reviews.
- The new LIFT schedule is available on the STLS website; we have continued with the blended offer of providing two face to face meetings and one virtual as we still recognise it can be challenging for some staff to attend in person.
- The SNI offer in Canterbury looks very different this year (in line with the outcome of the Early Years review). Lovely Charlotte, Julie, Carolyn & Sophie will be visiting your setting to offer specialist advice and support instead of the children going to Caterpillars at Parkside.



### School Readiness Survey - February 2024 - By Kindred 2

Worth a read: [CLICK HERE](#)

### SENIF news



The only immediate change is in line with the new Early years Entitlement for Under 2's. If you have a child under 2 who is eligible for the new entitlement, and their needs are over and above that of another child of the same age, you may be able to apply for SENIF. In the first instance, complete the digital SENIF Request Form which will identify that the child is under two. The form will request some basic information, and alert the SENIF Team of your enquiry, we will then contact you to gather information relating to the child's needs.

Also please make sure you let the Team know if there are children who are deferring their start to Reception.

We recommend you do read the County Early Years Newsletter from Zenia, regarding training you can access & do think about completing the EHCP workshop if you are considering requesting an assessment.

### Family Hubs

Are now all operational across the county and our district. Please check their website/Facebook page for what they will be offering.





For September 2024



These will start these from the week commencing 16/9/24 across Canterbury/Coastal and Thanet districts in partnership with the Family Hubs and Health Visiting.

This is for any aged pre-school child that is not of school-age, where there are concerns regarding the child's speech, language and communication development.

For the first month we will also be running some additional booked sessions (invite only) that will not be advertised to enable us to see children already referred to the service to access their assessment through this method

### Referrals

From Monday 2nd September 2024, if you have concerns that would warrant a referral to speech and language therapy for a child (when the strategies and support you are offering is not making a difference), you will NOT need to complete a referral form, instead please invite the family to attend a Talking Walk-in session convenient to them (see posters with dates attached for the rest of this year).

There are exceptions to this that could impact attendance or quality of assessment for which we ask you to refer in the usual way, for example:



- 
- 
- 
- 

- Safeguarding concerns
- Bilingual families
- Eating and drinking difficulties
- May require a multidisciplinary assessment

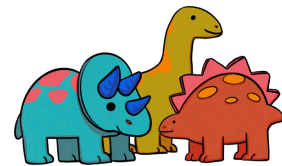


Any referrals received from 02/09/24 onwards, we will send a letter to the family asking them to attend a Talking Walk-in (TIWI) session instead of processing the referral (unless they are an exception).

In the meantime, we are accepting referrals which meet criteria to offer an appointment at a booked TIWI.



Potential outcomes of the Talking Walk-ins are:



- Reassurance and discharge: No intervention required
- Advice/ Sign posting to the wider system support (universal and/or targeted) required and discharge: Advice/recommendations given
- Further assessment/follow up session required: Parents will be contacted with a booked Follow up session
- Intervention required: Therapy waiting list

The Talking Walk-ins sessions are NOT:

- Replacing the advice, strategies and recommendations you are implementing
- Replacing the targeted support you are offering and accessing to support the children

\*The Talking Walk-ins ARE replacing the referral process and current criteria in Canterbury/Coastal and Thanet.

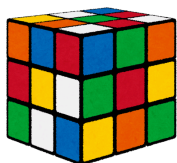
As well as the emails & posters sent to you look at the Canterbury Family Hub Facebook page for the most up to date times/dates for Talking Walk-ins.

## Early Years SENCo Network Meetings

We will be offering a raffle prize each time for all those that attend and will be inviting any of YOU to come and share something that is working well/ report back on something you have attended in our SENCo Spotlight Time.

Term 1 - Guest Speaker- Sophie Lawrenson EY S&L Clinical Lead – Talking Walk-ins  
Catch ups from E&I, SENIF & Family Hubs  
STLS Consultation  
Book giveaway

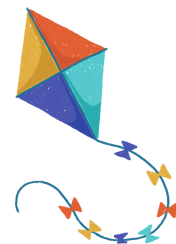
SENCo Spotlight Time - Any Contributors? (Please email Sue s.fisher@stns.org.uk or Ali a.goodsell@stns.org.uk)



Term 2- Guest speaker- Beth Wakelin OT @ Whitfield Aspen School

## Early Years Training Available

Attention Autism on 3rd & 10th December (both days must be attended)

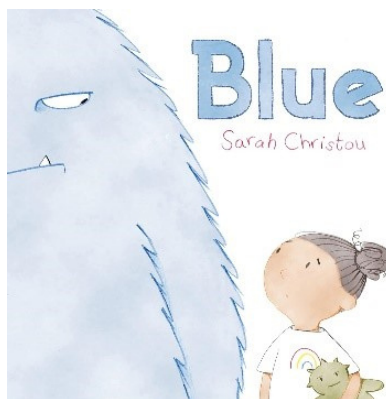


Targets Audience - EY's practitioners in nursery and schools working with children with Autism and attention difficulties.

Cost: £120 per person (ideally 2 people should attend and priority will be given to those schools and settings that endeavour to meet this requirement). This is subsidised for one more year.

To book the 2 hour AET Basic awareness training (Making Sense of Autism) for whole settings (no COST) please go to the STLS Website [HERE](#).

## Sue's Book Corner



[Amazon Link](#)

### **Blue by Sarah Christou**

Once I had a secret that was big and monstrous... I thought of it as Blue.

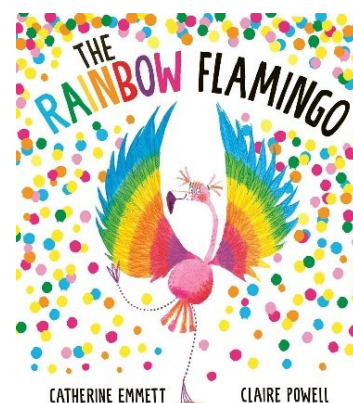
But Blue the monster doesn't have to be scary. And he doesn't have to be a secret. After all, we all feel blue from time to time and talking about it helps.

A friendly, gentle story to help young children navigate big emotions.

The **Rainbow Flamingo** by **Catherin Emmett** & **Claire Powell**

Adele wants nothing more than to be just like all the other flamingos. But hiding who she really is feels horribly tough. Can Adele find the courage to celebrate her true colours?

Perfect for fans of Perfectly Norman, this thought-provoking and touching story empowers children to embrace their uniqueness and have the courage to stand out.



CATHERINE EMMETT CLAIRE POWELL

[Amazon Link](#)

**See You Soon**