

This week, we have been learning to read and write words containing **ue** saying /yoo/ and /oo/.



Level 5

**ue**

This spelling can be used when the /yoo/ sound is in the middle or at the end of a word.



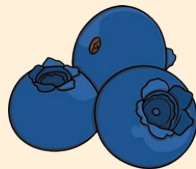
**fuel** **rescue**

**ue** is part of the /yoo/ sound family:

<b>u_e</b>	<b>u</b>	<b>ue</b>
<b>fortune</b>	<b>unicorn</b>	<b>fuel</b>
<b>tube</b>	<b>music</b>	<b>rescue</b>

**ue**

This spelling is usually used when the /oo/ sound is at the end of a word.



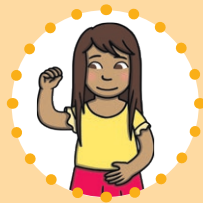
**glue** **blue**

**ue** is part of the /oo/ sound family:

<b>u_e</b>	<b>oo</b>	<b>ue</b>
<b>flute</b>	<b>room</b>	<b>glue</b>
<b>prune</b>	<b>spoon</b>	<b>blue</b>



**Picture**  
**ue** saying /yoo/ as in **statue**.



**Action**  
Show the action for **ue**. (statue)



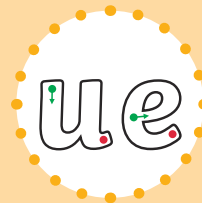
**Formation**  
Follow the arrows and finish at the dots.



**Picture**  
**ue** saying /oo/ as in **glue**.



**Action**  
Show the action for **ue**. (glue)



**Formation**  
Follow the arrows and finish at the dots.

### Sentence Reading Activity

Read the sentences below. Colour in the **ue** saying /yoo/ and /oo/ words in different colours.

The glue has a blue lid.

They will rescue the cat from the roof.

My true love is due to perform at the venue.

## Focus Words

due venue fuel argue clue glue true blue

## Common Exception Words

We have been learning to read:

many laughed

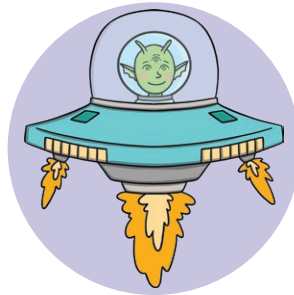
We have been learning to spell:

people looked

## Grammar

**This week, we have been revising what is needed when writing a simple sentence.**

When we write a sentence, we need to leave clear spaces between the words, a full stop at the end and use a capital letter at the beginning of the sentence. Kit, Jay and Sam are here to remind us:



## Activity

Can you write a sentence containing a **ue** saying /yoo/ or /oo/ word? Try to include a capital letter, finger spaces and a full stop.

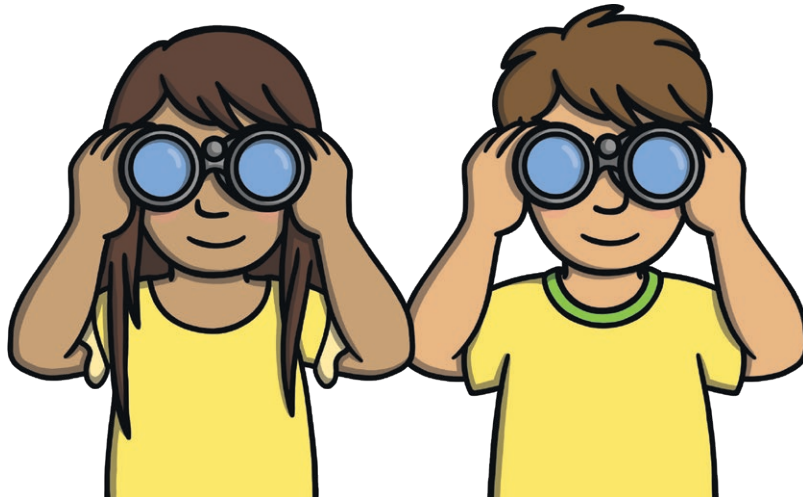
---

---

---

# Home Learning Challenge

Read the words, deciding if the **ue** grapheme makes a /yoo/ or a /oo/ sound. Circle all the **ue** saying /yoo/ words. Can you spot a row with four **ue** saying /yoo/ words? Colour it in.



cruel

due

glue

rescue

value

cue

blue

clue

venue

argue

statue

fuel

glued

true

persue

continue