

This week, we have been learning to read and write words containing **y** saying /ee/.

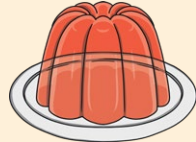


Level 5

**y**

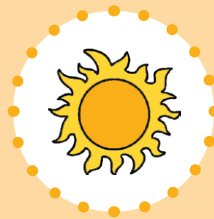
**y** is usually used when the /ee/ sound is at the end of a word. It often follows a consonant. Sometimes, the letter before the **y** is doubled too.

**funny**



**y** is part of the /ee/ sound family:

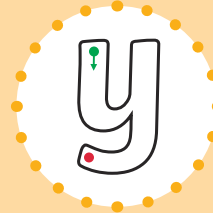
<b>ee</b>	<b>ea</b>	<b>e_e</b>	<b>e</b>	<b>y</b>
<b>sheep</b>	<b>each</b>	<b>complete</b>	<b>emu</b>	<b>funny</b>
<b>bee</b>	<b>beak</b>		<b>sequin</b>	
	<b>tea</b>		<b>she</b>	



**Picture**  
**y** saying /ee/ as in **sunny**.



**Action**  
Show the action for **y** saying /ee/.



**Formation**  
Follow the arrow and finish at the dot.

### Sentence Reading Activity

Read the sentences below. Colour in or circle the **y** words.

The boy has messy fingers.

Next week is going to be sunny, then cloudy.

The jelly is cold and wobbly.

My family would love to have a furry pet.

### Focus Words

happy

family

crunchy

very

sunny

furry

body

hairy

## Common Exception Words

We have been learning to read:

**any**

**eye**

We have been learning to spell:

**water**

**where**

### Grammar

This week, we have been learning how to use the connective **and** to combine two sentences together to create one.

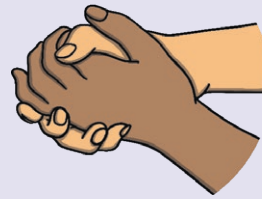


#### Picture



Mum reminds us that we can use the connective **and** to join sentences together, just like when she joins hands with Kit and Sam.

#### Action



Clasp your hands together.

### Activity

**Can you read the sentence below and circle the connective?**

Mum let Kit ride to school on his sparkly scooter and she took it back home to keep it safe.

# Home Learning Challenge



Level 5

Read the words and draw a picture to match. The first one has been done for you.



daisy

bunny

pony

jelly

poppy

nappy

sunny

penny