

This week, we have been learning to read and write words containing **ea** saying /ee/.



Level 5

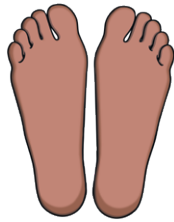
The /ee/ Sound Family

ee

This spelling is usually used when the /ee/ sound is in the middle of a word. Sometimes it can be used when the /ee/ sound is at the end of a word.

feet

bee

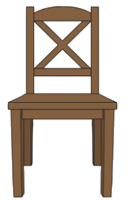


ea

This spelling is used when the /ee/ sound is in the middle of a word. Sometimes it can be used when the /ee/ sound is at the beginning or at the end of a word.

seat

eat

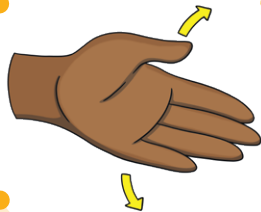


Picture

ea saying /ee/ as in 'leaf'.

Action

Show the action for **ea**.



ea

Formation

Follow the arrows and finish at the dots.

Word Reading Activity

Read the words below. Colour the **ea** words in one colour and the **ee** words in another colour.

queen

least

sea

bead

heap

sleep

read

feet

seat

weekend

meat

treat



Focus Words

sea bead read

seat meat heap treat least



Common Exception Words

We have been learning to read:

Mr**Mrs**

We have been learning to spell:

were**there**

Grammar

This week, we have been learning about capital letters.

- When we write a sentence, we need to use a capital letter at the start of the first word.

**Picture**

Kit reminds us when and where to use a capital letter.

**Action**

Stretch up tall to make a big capital 'K' shape.



Home Learning Challenge

Read the /ee/ sound family words. Can you circle the correct word to match the picture?



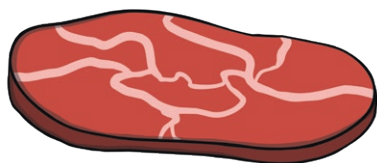
leaf

seed



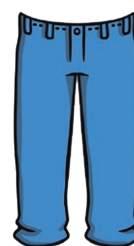
bean

bee



meat

sheet



jeans

sheep



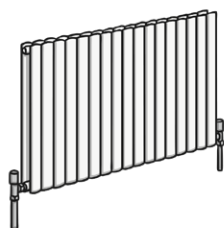
sea

see



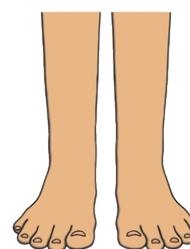
seat

speed



heater

queen



tree

feet