

This week, we have been learning to read and write words containing **a_e** saying /ai/.



Level 5

The /ai/ Sound Family

ai

This spelling is usually used when the /ai/ spelling is in the middle of a word.

Occasionally, it can be used when the /ai/ sound is at the beginning of a word.

train **aim**



ay

This spelling is usually used when the /ai/ sound is at the end of a word.

Sometimes it can be used when the /ai/ sound is in the middle of the word.

tray **crayon**



a_e

The a_e grapheme is a split digraph. The 'a' and the 'e' work together to say /ai/.

This spelling is usually used when the /ai/ sound is at the start or in the middle of a word.

ape **snake**



Picture

a_e saying /ai/ as in 'cake'.



Action

Show the action for **a_e**.



Formation

Follow the arrows and finish at the dots.



Word Reading Activity

Read the words below. Colour the **ai**, **ay** and **a_e** words in different colours.

rain tray lane

spray train tail

play crane day

name paint grape



Focus Words

snake game cake

ate same make name came



Common Exception Words

We have been learning to read:

love**your**

We have been learning to spell:

little**one**

Grammar

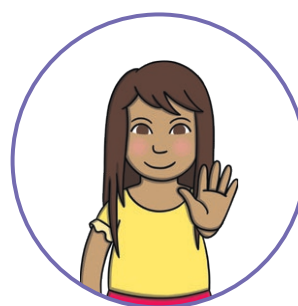
This week, we have been revising finger spaces, capital letters and full stops.



Jay's Spaceship reminds us when and where to place a finger space.



Kit reminds us when and where to use a capital letter.



Sam reminds us when and where to place a full stop.

Home Learning Challenge



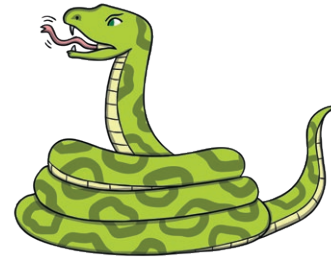
Level 5

Read each word. Draw a line to match the word to the correct picture.

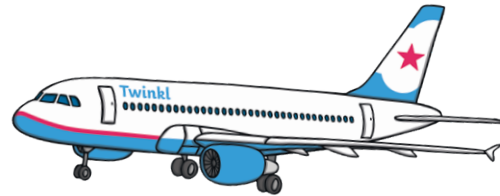
play



snake

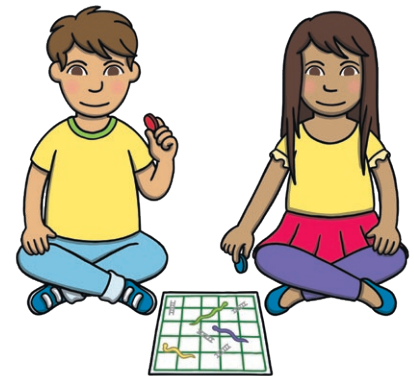


plane



amaze

haystack



grapes

shape

cake



Home Learning Challenge



Level 5

Read each word. Draw a line to match the word to the correct picture.

play

snake

plane

amaze

haystack

grapes

shape

cake

