

This week, we have been learning to read and write words containing **i_e** saying /igh/.



Level 5

The /igh/ Sound Family

igh

This spelling is usually used when the /igh/ sound is in the middle of a word, but sometimes it is used at the end.

night



sigh

ie

This spelling is usually used when the /igh/ sound is at the end of a word or sometimes in the middle of a word when followed by an 's' or 'd'.

tie



fried

i_e

The i_e grapheme is a split digraph. The 'i' and the 'e' work together to say /igh/. This spelling is usually used when the /igh/ sound is in the middle of a word.

time



bike

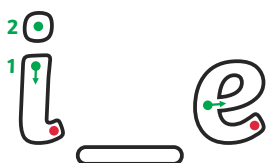
Action

Show the action for **i_e**.



Formation

Follow the arrows and finish at the dots.



Word Reading Activity

Read the words below.

Colour the **igh**, **ie** and **i_e** words in different colours.

light	time	ride
tie	pine	lie
prize	sight	pie
bike	slime	night

This week, we have been learning to read and write words containing **o_e** saying /oa/.



Level 5

The /oa/ Sound Family

oa

This spelling is usually used when the /oa/ sound is in the middle of a word. It is sometimes used when the sound is at the beginning of a word.

goat

oak



o_e

The o_e grapheme is a split digraph. The 'o' and the 'e' work together to say /oa/. This spelling is usually used when the /oa/ sound is in the middle of a word.

cone

home



Picture

o_e saying /oa/ as in 'bone'.



Action

Show the action for **o_e**.



Formation

Follow the arrows and finish at the dots.



Word Reading Activity

Read the words below. Colour the **o_e** and **oa** words in different colours.

bone

toad

load

home

road

note

alone

roast

rope

toast

goat

cone



Focus Words

bike

time

pine

prize

bone

home

note

alone



Common Exception Words

We have been learning to read:

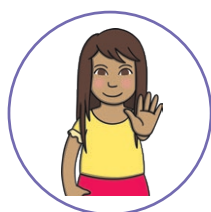
people**looked**

We have been learning to spell:

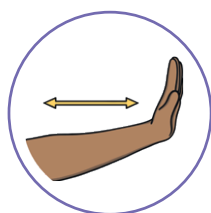
do**when**

Grammar

This week, we have been revising the use of full stops.



Sam reminds us when and where to place a full stop.



Make a stop action with the flat palm of your hand, push it out and pull it back quickly.

Activity

Can you read the sentence and add a full stop at the end?

Kit has a slide in his garden at home

Home Learning Challenge



Level 5

Can you read the words and draw a picture to match?



antelope

bike

bone

cone

slide

home

kite

time