

This week, we have been learning to read and spell words containing **ture** saying /cher/.



Level 6

ture

In some words, the **ture** spelling makes the /cher/ sound. This is usually at the end of words.

capture
picture



Common Exception Words

We have been learning to spell the common exception words **delicious** and **fruit**.

Focus Words

future

picture

sculpture

nature

vulture

adventure

creature

capture



Grammar

This week, we have been looking at the difference between questions and commands.



- **Questions** ask something. They start with a capital letter and finish with a question mark. They usually include **who, what, where, when, why** or **how**.

When does the film finish?

- A **command** gives someone an instruction or tells them to do something. It usually begins with an **imperative (bossy) verb** and can end with either an **exclamation mark** to show emotion or a **full stop**.

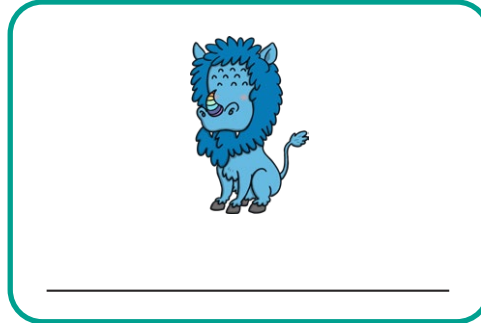
Put your coat on.
Get in the bath!

ture Word and Picture Match



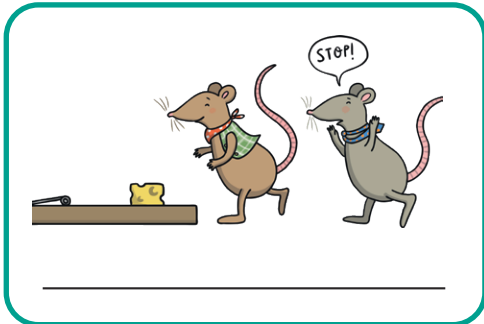
Level 6

Write the word on the line to match the picture.



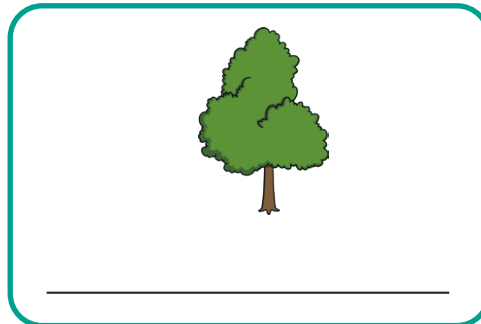
picture

capture



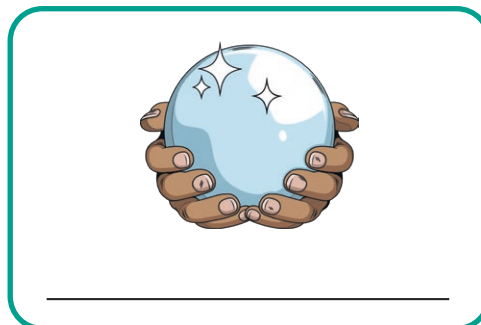
vulture

adventure



future

creature



sculpture

nature

Can you write one sentence containing a **ture** word?

ture Word and Picture Match

Answers



Level 6



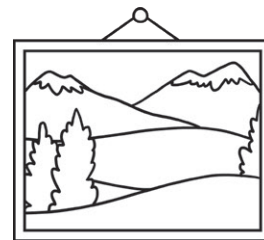
adventure



creature



capture



picture



vulture



nature



sculpture



future