

This week, we have been learning to read and spell words containing **mb** saying /m/.



Level 6

The /m/ Sound Family

mb

The spelling pattern **mb** saying /m/ usually appears at the end of a word. We don't say the /b/ sound in words that end in **mb**.

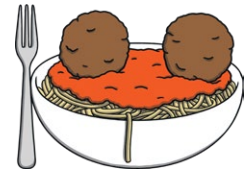
lamb
comb
thumb



m

m is the most common spelling of the /m/ sound and can appear anywhere in a word.

jam
crumble
meat



Common Exception Words

We have been learning to spell the common exception words **famous** and **shoe**.

Focus Words

thumb	comb	lamb	bomb	climb	numb	limb	crumb
--------------	-------------	-------------	-------------	--------------	-------------	-------------	--------------



Grammar



This week, we have learnt to put words into alphabetical order using the first and second letters.

- **Alphabetical order** is when words are put into a list based on where their first letter comes in the alphabet.
- If there are two words with the same **first** letter, then look at the **second** letter.

ant

bat

boat

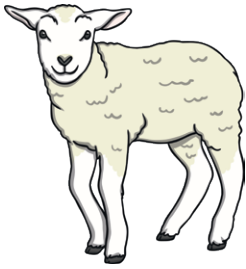
cat

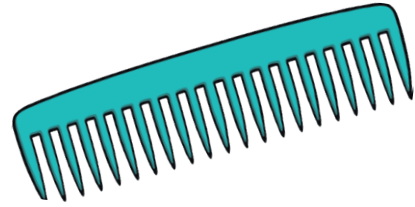
mb saying /m/ Words

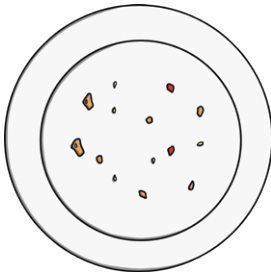


Level 6

Look at the picture and write the correct word to match.











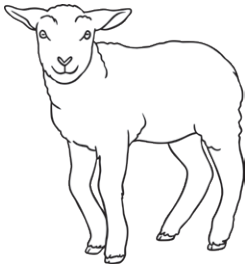


Can you write a sentence using one of the **mb** words?

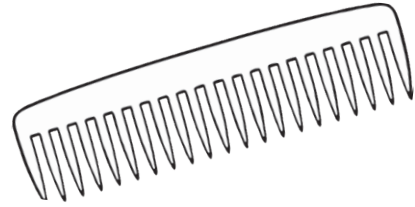
mb saying /m/ Words
Answers



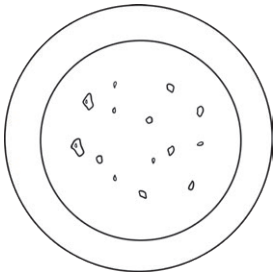
Level 6



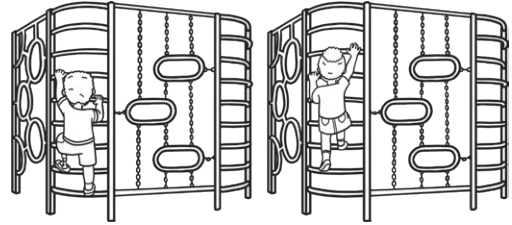
lamb



comb



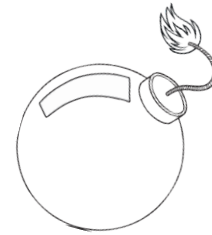
crumb



climb



thumb



bomb