

This week, we have been learning to read and spell words containing **wr** saying /r/.



Level 6

## The /r/ Sound Family

**wr**

This spelling is used at the start of a word.

We don't say the /w/ sound in words containing **wr**.

**wr** is a much less common spelling of the /r/ sound. These words need to be learnt.

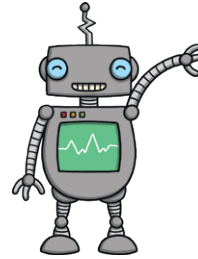
**wrist**  
**write**



**r**

This spelling is used at the start, middle or end of a word.

**r** is the most common spelling of the /r/ sound.



**ring**  
**drip**  
**caravan**

## Common Exception Words

We have been learning to spell the common exception words **four** and **eight**.

## Focus Words

wrong

wren

wrist

write

wrote

wring

wreck

wrap



## Grammar

This week, we have been learning about adverbs.



- **Adverbs** are used to describe **verbs**.
- They often end in -ly.
- **Adverbs** can be used before or after the **verb** they are describing.

Kit **ran** quickly as he **laughed** loudly.

Sam neatly **wrapped** the parcel.

verb

# wr saying /r/ Word Unscramble



Level 6

Can you unscramble the letters to write the **wr** words?

The first one has been done for you.

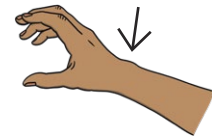
1. rnwe wren \_\_\_\_\_



2. gownr \_\_\_\_\_



3. itwsr \_\_\_\_\_



4. rwpa \_\_\_\_\_



5. twire \_\_\_\_\_



6. wcrek \_\_\_\_\_



7. twerah \_\_\_\_\_



Can you write a sentence using one of these **wr** words?

---

---

---

# wr saying /r/ Word Unscramble

## - with Phoneme Frames



Level 6

Can you unscramble the letters to write the **wr** words?

1. rnwe

wr	e	n
----	---	---



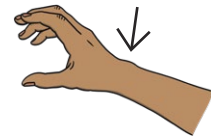
2. gownr

--	--	--



3. itwsr

--	--	--	--



4. rwpa

--	--	--



5. twire

--	--	--	--



6. wcrek

--	--	--



7. twerah

--	--	--



Can you write a sentence using one of these **wr** words?

---

---

---