

Dear Parent/Guardian

Welcome back to the Summer Term! It has been wonderful to be back in school this week, seeing all of the children, staff and families and catching up on the fun shared during the Easter holidays.

As you would expect, we have a busy and exciting plan for the term ahead. Year 1 have already been out and about visiting the Hindu Temple in Preston. This is part of their work exploring colour and the festival of Holi. They were an absolute credit to us all, so well behaved and interested in finding out about the customs and festivals of the Hindu faith. We have plans for a day on the water at Fairhaven Lake for Year 4, football and netball tournaments, sports day, Year 6 residential, the End of The Pier Show, as well as our legendary Summer Concert and Year 5 and 6 End of Year Production. Not to mention a few more surprises thrown in for good measure.

Our first big event, which we would love you to support, is our Curriculum Evening. This will be held on the afternoon and evening of Tuesday April 23rd at 3.40pm and again at 6-7pm. We will showcase our curriculum across the school and have children on hand to talk about their learning, as well as the teacher who leads the subject across the school. We recently held a similar event for our Governors, where we showcased our RE curriculum and they thoroughly enjoyed it and were so impressed with our children and their work.

Thank you for your patience regarding the tree that has fallen near the path alongside St Bede's tennis courts. It is hoped that this will be open again from Monday. You will have noticed, that there has been a significant amount of work going on, including tree trimming along the path, a new fence along the back of the millennium garden, as well as the removal of some very ugly old fence posts. We have our new neighbour at the back of the school to thank for this and are very grateful for all his support and help. He plans to replace the fence running along the edge of the path in the next 12 months. They have politely asked that parents refrain from driving down towards the school gates and parking across the bottom of their drive, blocking access.

Talking of parking, we had an understandable request from another neighbour, that parents remind their children to remain on the road down into school and refrain from playing on and climbing on the flowerbeds that edge the houses on the private road down to school. These areas are part of the gardens and as such, are private property.

I hope you have a lovely weekend and look forward to our first full week in school next week.

Mrs Gili-Ross

## Diary Dates

### APRIL

Mon 15	New Summer menu
Thur 18	Rec Vision Screening
Mon 22 11am	Y3 Class Mass
Wed 24 9am	Whole school mass at St Peter's church
Fri 26	Birthday table
Mon 29 11am	Y4 Class Mass

### MAY

Mon 6	Bank Holiday—school closed
Mon 13 11am	Y5 Class Mass
Mon 20 11am	Y6 Class Mass
Mon 20 4.15pm	Dance club show
Fri 24 3.30pm	Break up for half-term

### JUNE

Mon 10	School opens
Wed 12-14	Y6 PGL Winmarleigh



Parents/grandparents are welcome to join us for our class mass

Mon 22 Apr 11am	Year 3
Mon 29 Apr 11am	Year 4
Mon 13 May 11am	Year 5
Mon 20 May 11am	Year 6

## PE DAYS

Rec	Weds & Fri
Year 1	Mon & Thurs
Year 2	Tues & Fri
Year 3	Mon & Weds
Year 4	Tues & Thurs
Year 5	Weds & Thurs
Year 6	Weds & Thurs



**PLEASE ORDER SCHOOL LUNCHES  
VIA SCOPAY**

*Week commencing 15th April*

**Please choose off the new SPRING  
SUMMER menu -**

**WEEK 1**

**Please see menu [HERE](#)**



If your child celebrates their birthday during April, we would like to invite them to join the special '*Birthday Table*'. This includes a cupcake with candle, served at the specially decorated table, the cost is 50p (please pay via Scopay under trips/events)

The 'Birthday Table' for March will take place on **Fri 26th April**

## Appeal for support School Family Fund

A number of parents have asked if and how they can support some of our families who may be struggling financially. We have had some very generous offers from parents to pay towards the cost of trips for other children and buy uniform for them.

Many working families fall just below the threshold to be eligible for free school meals and additional benefits. Due to rising costs, parents go without food in order to feed their children. We try to support these families as much as possible.

We are appealing to staff, parents, friends and parishioners....

Only if you are financially able, please consider adding a supermarket shopping voucher/gift card to your weekly or monthly shop to donate to our Family Fund. We ask that if possible, these are Lidl, Tesco or Sainsburys vouchers and please write the amount on the card. Regular donations will enable us to continue to support more families when they need it most. The vouchers can be dropped off at the school office. They will then be given to families who are struggling to afford basic essentials, particularly in school holiday periods.

Our uniform recycling scheme will continue, which benefits many families, so please bring any clean, out grown uniform (in good condition) into school. Recycled uniform is open and available to everyone and is part of our recycling mission led by the Laudato Si group.

Kindest regards  
Katy Seed  
Family Learning Mentor

# JOIN US FOR A FOCUS ON CURRICULUM



**GEOGRAPHY**  
Find out how we use double page spreads.



**HISTORY**  
Look at how our curriculum builds from EYFS to Year 6.

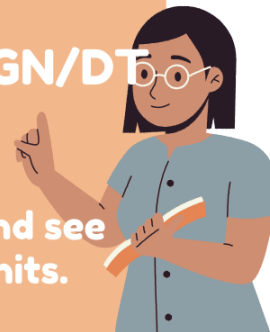
## MATHS

Find out how we use a mastery approach.



## ART/DESIGN/DT

Look at our refreshed curriculum and see our 3 week units.



## English

Reading/Writing we do it all-find out how its taught to develop independence.



## PE

Find out about our curriculum and plans for keeping active.

## SCIENCE

Look at our resources and we will introduce you to the varied topics.



## WHERE AND WHEN

Tuesday April 23rd  
3.40pm and again between 6pm and 7pm in classrooms across the school .



## EVENTS & FUNDRAISING



A big thank you to the P.T.F.A. for the recent events that have been put on, we really appreciate your hard work. We are also very grateful to you all for supporting these events.

*People We Love Planters raised —£365.33*

*The Bunny Bop raised—£389.62*

Donations for the Big Lent walk can still be made via the link below.

<https://schools.walk.cafod.org.uk/fundraising/st-peters-lenten-walk>