

Dear Parent/Guardian

It has been such a busy week again here at St Peter's and the wonderful sound of children singing has been filling the corridors as we prepare for our Harvest Service, led by Key Stage One on Thursday. Thank you to those of you who have replied to the invite to our harvest celebration, where we will entertain Grandparents and retired members of the Parish. Year 6 are looking forward to conversing with them. Our older children and the choir have plans to entertain them too.

The weeks are racing by and we are looking ahead to Parents Evening and plan to confirm times on Monday -thank you for your quick responses.

The children have been focusing on doing more, working hard and looking to Jesus' example; I think we would agree that, here in school, they do a pretty good job. As it is October, the month of the Holy Rosary, we have been using our beautiful woods to spend time together praying the Rosary.

A well earned rest over the weekend is deserved!

Have a lovely weekend!

Mrs G-R



- Mon 9.10.23—11am—Y3 class mass
- Thurs 12.10.23—11am KS1 Harvest Celebration
- Thurs 12.10.23-2pm—Harvest Celebration for grandparents
- Mon 16.10.23 11am Y4 class mass
- Mon 16.10—Tue 17.10—School Uniform in entrance
- Thur 19.10.23—Open Day 10-12 noon & 6-7.30pm
- Fri 20.10.23—Break the Rules Day
- Fri 20.10.23—Finish for Half-term break
- Tues 31.10.23—Secondary school application deadline
- Tues 31.10.23—School re-opens
- Mon 13.11.23—Dance Festival
- Fri 24.11.23—Christmas Movie Night
- Fri 8.12.23—Festive Own Clothes Day
- Sat 9.12.23—Christmas Market & Pocket Money Fair
- Fri 22.12.23—Break up for Christmas—finish at 2pm (NO ARK ON THE 22.12.23)

**PLEASE SEE OUR PARISH NEWSLETTERS ON
SEPARATE ATTACHMENT**

PE DAYS

Rec	Weds & Fri
Year 1	Tues & Thurs
Year 2	Tues & Fri
Year 3	Mon & Swimming Weds
Year 4	Mon & Thurs
Year 5	Weds & Thurs

NEXT WEEK SCHOOL LUNCHES
PLEASE ORDER ONLINE VIA SCOPAY
PLEASE CHOOSE OFF SUMMER MENU—WEEK 1
NEW MENU COMING SOON!


FREE SCHOOL MEALS
INFORMATION

All children in Reception, Year 1 and Year 2 are entitled to universal free school meals. However, some families who are on low income and meet a certain criteria, are also eligible for supermarket shopping vouchers during school holidays and free holiday club places. Eligible families will continue to receive free school meals after Year 2.

Some families with children in Key Stage 1 do not claim as they are already getting free school meals, however they are missing out on the other benefits so please double check.

Please click on the link below to see if you are eligible. If you are eligible or have any problems please email Katy (Family Learning Mentor) katy.s@st-peters-pri.lancs.sch.uk so that your shopping vouchers can be emailed to you asap.

<https://www.lancashire.gov.uk/children-education-families/schools/free-school-meals/?page=1>



St Peter's Primary School

SEPTEMBER	OCTOBER	NOVEMBER	DECEMBER	OTHER INFO
6 th Whole school mass 14 th School Photos 20 th PTFA AGM	5 th -Autumn Special Lunch 9 th Homework check in. 12 th Am Harvest Festival Service. Pm Afternoon Tea for Grandparents and the Parish 17 th and 18 th Parent's Night 19 th Open Day Reception 24 20 th PTFA Break The Rules Day	2 nd and 9 th Bikeability Year 6 9 th Flu Vaccinations/ Parent Workshops 6.30pm 10 th PTFA Movie Night 3.30 -5pm 13 th Dance Festival Year 3 15 th Remembrance Mass 9am St Peter's church 18 th Choir Performing Arts	5 th Book Look and Homework Showcase 3.30pm-5pm 8 th Own Clothes Day-Christmas goods 9 th PTFA Christmas Fair 12 th Reception Nativity 9am/6pm 13 th Reconciliation Service 14 th Year 1 and Year 2 Nativity 9am/6pm 19 th Advent Service 6pm	Class Masses -On a rota-Please check the weekly newsletter and your child's class Seesaw. Parish Family Masses During Term Time-1 st Sunday of the month at St Peter's Lytham 3 rd Sunday of the month at St Joseph's Ansdell. PTFA Events please also check out our St Peters Lytham PTFA Facebook Page. Book Looks -Books will be made available in the classroom giving you an opportunity to look at them alongside your child. Homework Showcase in the hall. Homework is celebrated and our children have the chance to chat about what they have been doing. Please note dates may be subject to change.
JANUARY	FEBRUARY	MARCH	APRIL	
School Reopens 8 th January 2024	9 th -School Closes 3.30pm 19 th School Reopens	19 th and 20 th Parent's Evening. Tuesday 26 th time tbc- Lenten Prayer Stations- 28 th 3.30pm School Closes for Easter	Tuesday 9 th April School reopens. 23 rd Book Look/Homework Showcase	
MAY	JUNE	JULY		
6 th School closed W/C 13 th Year 6 SATS 23 rd Sports Day TBC School closes 24 th May	School reopens 10 th June 12 th -14 th Year 6 Winmarleigh Trip 27 th St Peter's Got Talent	16 th and 17 th Year 5/6 Production 12 th Summer Concert am/pm 18 th July Year 6 Leavers Worship 9am School closes 2pm		

Exciting news!! We are once again taking part in the

'Books for Bugs Virtual Book Fair'

Launch date: Monday 16th October 2023

Closing date: Midnight Sunday 22nd 2023

Start Browsing [HERE](https://www.booksforbugs.co.uk)

Coming Soon
Virtual Book Fair

BOOKS FOR BUGS

Visit www.booksforbugs.co.uk

Collect from your teacher

Take home & enjoy!

It's not long until your schools' Books for Bugs Virtual Book Fair.
Thousands of books at £2.99 each, brand new!

Start browsing today at www.booksforbugs.co.uk - More details with how to order
with free delivery will be announced near the start of your fair

EVENTS & FUNDRAISING



Dates for your diary Autumn/Winter

Friday 20th October
Break The Rules Day

Friday 24th November
Christmas Movie Night

Friday 8th Dec
Festive/own clothes day

Saturday 9th December
**Christmas Market and
Pocket Money Fair**



Thank you so much to
those that have already
donated some fabulous
prizes, it's going to be a
great raffle!!

WE NEED YOUR HELP

PTFA
Christmas Raffle



Harvest CELEBRATION

12TH OCTOBER

2pm In The School Hall

YOU WILL BE ENTERTAINED
BY OUR CHILDREN AND
TREATED TO TEA AND CAKE
RSVP

[https://forms.office.com/e/
qLQONE2SHX](https://forms.office.com/e/qLQONE2SHX)

It's that time of year again where
the PTFA are busy planning the
Christmas Market and raffle which
raise vital funds for school.
If you or if you know any business
that could generously donate a
raffle prize then please let one of
the PTFA know or Rachel in the
office

BREAK THE RULES DAY

20th October 2023

WE HAVE A LIST OF RULES WHICH CAN BE BROKEN
WITHIN SCHOOL ON THIS DAY ONLY!

HOWEVER FOR EACH RULE YOU BREAK YOU WILL
BE FINED 50P

WEAR YOUR OWN CLOTHES

HAVE CRAZY HAIR

WEAR TRAINERS

WEAR NAIL POLISH

BRING JUICE IN YOUR WATER BOTTLE

BRING A SMALL NAUGHTY TREAT FOR BREAK TIME

TEMPORARY TATTOOS

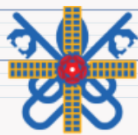
WEAR FANCY DRESS

YOU CAN BREAK AS MANY RULES AS YOU LIKE BUT

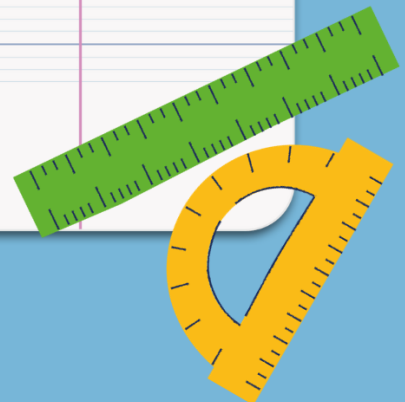
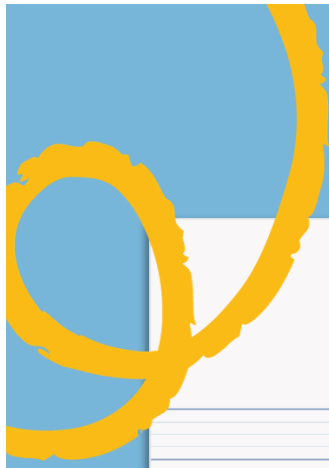
REMEMBER IT IS A 50P

FINE FOR EVERY RULE BROKEN.

PUT YOUR FINE IN AN ENVELOPE AND PUT IT IN YOUR CLASS CASH
COLLECTION JAR



St Peter's
Catholic
Primary
School





BOOKING FEES & LATES MAY APPLY / CHECK WEBSITE FOR BOX OFFICE OPENING TIMES

DANCE FESTIVAL

We have been invited to take part in the Wyre & Fylde Dance Festival again. The Y3 children are currently developing a dance, on the theme of Heroes and Heroines, with the help of our dance teacher Holly. This is part of their curriculum PE lessons. The Festival is a wonderful celebration for all the schools that take part and the children who took part last year absolutely loved it. Tickets have been released and I would encourage you to purchase them as soon as possible, to avoid disappointment as it will be a sell out

<https://www.wintergardensblackpool.co.uk/events/heroes-heroines-wyre-fylde-schools/>

Secondary School applications 2024-25 are now open, please follow the link

below for further information.

Secondary deadline
31.10.23

<https://www.lancashire.gov.uk/children-education-families/schools/apply-for-a-school-place/>

Primary School applications 2024-25 are now open, please follow the link

below for further information.

Primary deadline
15.01.24

<https://www.lancashire.gov.uk/children-education-families/schools/apply-for-a-school-place/>

Supplementary forms available from the school office or by the following link

<https://www.st-peters-pri.lancs.sch.uk/admissions>

JESUS IS AT THE HEART OF ALL WE DO

ST PETER'S
CATHOLIC PRIMARY
SCHOOL LYTHAM



WE WOULD WELCOME THE OPPORTUNITY TO SHOW YOU AROUND OUR SCHOOL AND BEAUTIFUL GROUNDS WHERE....

- ✓ WE HAVE AN ENRICHED AND EXCITING CURRICULUM
- ✓ CHILDREN AND STAFF WORK HARD TO ENSURE THE BEST OUTCOMES
- ✓ CHILDREN ARE SAFE, HAPPY AND ENGAGED
- ✓ YOU WILL BE WELCOMED INTO A THRIVING COMMUNITY

OPEN DAY 2023-
19TH OCTOBER, 2023
10-12AM AND 6-7.30PM

OR CALL TO MAKE AN APPOINTMENT AT YOUR CONVENIENCE
01253 734658

Please can parents check all items of uniform, coats, PE kit etc. are clearly marked with your child's name.

To assist us in reducing the amount of lost property, please encourage your child to keep jumpers and any other items in their bags, if taken off.

Free uniform will be available again in the entrance hall from Monday 16th to Tues 17th October between 7am and 6pm

If you have any unwanted uniform, that is in good condition, this can be dropped off between **10-12th October.**

Thank you



If your child celebrates their birthday this month (OCTOBER), we would like to invite them to join the special '**Birthday Table**' on the last Fri of the month. This includes a cupcake with candle and a specially decorated table, the cost is 50p (please book in advance - see below)

The 'Birthday Table' for this month will take place on **Fri 20TH October**

To book, please inform the school office either in person, by telephone - 01253 734658 or email: bursar@st-peters-pri.lancs.sch.uk by the **13th**

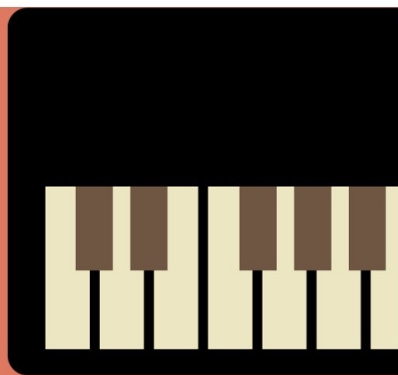
We had a special birthday celebration in school this week...Willow turned 7 and got a 'Woofin' off Mrs Gili-Ross for her birthday treat.



PIC•COLLAGE

LANCASHIRE MUSIC SERVICE

EARLY YEARS/KS1 CHOIR



Tuesday Evenings
4.00 - 4.30pm

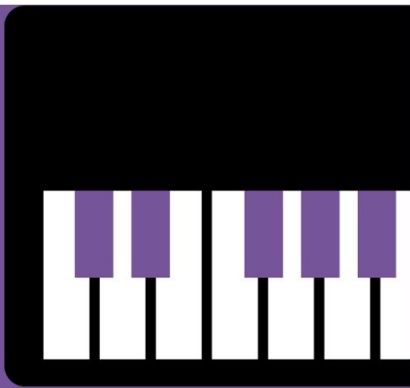


**JOIN US FOR MUSIC, GAMES, WEEKLY
ACTIVITIES AND MORE!**

Fylde Music Centre, St Bede's Catholic High School
www.lancashiremusichub.co.uk

LANCASHIRE MUSIC SERVICE

KS2 CHOIR



**Tuesday Evenings
5.15 - 5.45pm**



**JOIN US FOR MUSIC, GAMES, WEEKLY
ACTIVITIES AND MORE!**

**Fylde Music Centre, St Bede's Catholic High School
www.lancashiremusichub.co.uk**