

Good Afternoon

Is it me or has this week been a long one? All the more time to fill with learning, laughter and lots of preparation for the wonderful season of Advent, which lies ahead. Next week, each class will start to send home the Posada, the travelling crib, which helps us to remember the journey that Mary and Joseph made to Bethlehem. It is also a wonderful opportunity to take some time away from the Christmas madness and, as a family, remember the true meaning of Christmas; it was certainly something my own children looked forward to bringing home and sharing. We will endeavour to ensure that all our families have the chance to host a crib.

Tonight we have our Christmas Movie night -big shout out to the PTFA for organising and the staff for supporting it. The PTFA will once again be funding our Christmas Party Day with a children's entertainer, games and a virtual Panto. Thank you for supporting tonight's event and in anticipation of your continued support, selling raffle tickets and attending our Christmas Market in a couple of weeks. We really would not be able to provide these important and memorable little extras without the PTFA and your continued support.

Well done to our boys B Team, who came third in the Fylde and Wyre Football Competition on Monday. Our Girls Football team will have to wait until January to wow us with their skills, as their competition was called off, due to high winds.

Talking of the weather, the sun is set to shine this weekend and I for one will be making the most of it. I do hope you all manage to grab a bit of family time over the weekend as we have some very busy and exciting weeks ahead.

God Bless
Mrs G-R



- Mon 27th Nov 11am—Y1 Class Mass

DECEMBER

- Mon 4th 11am—Y2 Class Mass
- Tue 5th —Pre-order Christmas lunch deadline
- Fri 8th —Festive Own Clothes Day
- Sat 9th —Christmas Market & Pocket Money Fair
- Mon 11th 11am —Y3 Class Mass
- Tues 12th —9AM & 6PM Reception Nativity
- Thurs 14th—9AM & 6PM Year 1 & Year 2 Nativity
- Mon 18th 11am —Y4 Class Mass
- Weds 20th—Christmas lunch
- Fri 22nd—Break up for Christmas—finish at 2pm (NO ARK ON THE 22.12.23)

JANUARY

- Mon 8.1.24—School re-opens Spring term 1

PE DAYS

Rec	Weds & Fri
Year 1	Tues & Thurs
Year 2	Tues & Fri
Year 3	Mon & Swimming Weds
Year 4	Mon & Thurs
Year 5	Weds & Thurs

**PLEASE SEE OUR PARISH NEWSLETTERS ON
SEPARATE ATTACHMENT**

Forest School are looking for donations of outgrown wellies suitable for primary school age. Please donate at the office.
Many thanks



St Peter's Primary School

SEPTEMBER

6th Whole school mass
14th School Photos
20th PTFA AGM

OCTOBER

5th -Autumn Special Lunch
9th Homework check in.
12th Am Harvest Festival Service.
Pm Afternoon Tea for Grandparents and the Parish
17th and 18th Parent's Night
19th Open Day Reception 24
20th PTFA Break The Rules Day

NOVEMBER

2nd and 9th Bikeability Year 6
9th Flu Vaccinations/ Parent Workshops 6.30pm
10th PTFA Movie Night 3.30 -5pm
13th Dance Festival Year 3
15th Remembrance Mass 9am St Peter's church
18th Choir Performing Arts

DECEMBER

5th Book Look and Homework Showcase 3.30pm-5pm
8th Own Clothes Day-Christmas goods
9th PTFA Christmas Fair
12th Reception Nativity 9am/6pm
13th Reconciliation Service
14th Year 1 and Year 2 Nativity 9am/6pm
19th Advent Service 6pm

OTHER INFO

Class Masses-On a rota- Please check the weekly newsletter and your child's class Seesaw.

Parish Family Masses
During Term Time-
1st Sunday of the month at St Peter's Lytham 3rd
Sunday of the month at St Joseph's Ansdell.

PTFA Events please also check out our St Peters Lytham PTFA Facebook Page.

Book Looks-Books will be made available in the classroom giving you an opportunity to look at them alongside your child.

Homework Showcase in the hall. Homework is celebrated and our children have the chance to chat about what they have been doing.

Please note dates may be subject to change.

JANUARY

School Reopens
8th January 2024

FEBRUARY

9th-School Closes 3.30pm
19th School Reopens

MARCH

19th and 20th Parent's Evening.
Tuesday 26th time tbc- Lenten Prayer Stations-
28th 3.30pm School Closes for Easter

APRIL

Tuesday 9th April School reopens.
23rd Book Look/Homework Showcase

MAY

6th School closed
W/C 13th Year 6 SATS
23rd Sports Day TBC
School closes 24th May

JUNE

School reopens 10th June
12th-14th Year 6 Winmarleigh Trip
27th St Peter's Got Talent

JULY

16th and 17th Year 5/6 Production
12th Summer Concert am/pm
18th July Year 6 Leavers Worship 9am
School closes 2pm



PLEASE ORDER SCHOOL LUNCHES VIA SCOPAY

Please choose off the new Autumn/Winter menu - **WEEK 2**

Please see menu **HERE**

WEDNESDAY 20TH DECEMBER is our Christmas Lunch day. There will be Christmas music, Christmas crackers and our catering team will put on a delicious Christmas lunch—please see menu below.

PLEASE PRE-ORDER BY TUES 5TH DEC VIA SCOPAY, GO TO 20TH DECEMBER ON THE CALENDAR AND SELECT CHOICE A OR B OR YOU CAN EMAIL: bursar@st-peters-pri.lancs.sch.uk

CHRISTMAS Lunch.

Traditional Roast Turkey
with
Chipolata Sausage
or
Roast Quorn Fillet
with
Vegetarian Sausage
served with
Sage & Onion Stuffing
Roast & Mashed Potatoes
Seasonal Vegetables
& Gravy
~
Iced Vanilla Sponge

WEDS 20TH
DECEMBER

lancashire.gov.uk

Lancashire
County Council

EVENTS & FUNDRAISING



CHRISTMAS JUMPER/DRESS UP DAY

FRI 8TH DECEMBER

Children can wear their favourite Christmas jumper or outfit in exchange for the following:

*Infants—chocolates/biscuits/fancy goods
you'd like to re-gift*

Juniors—bottles



WE NEED YOUR TOYS



WE NEED SECOND HAND, GOOD CONDITION TOYS FOR OUR TOY STALL AT THE CHRISTMAS MARKET

Please bring any donations into school from Wednesday 6th December - Due to limited storage we cannot accept donations before this date.
Thankyou



ST PETER'S

CHRISTMAS MARKET AND POCKET MONEY FAIR

ARTISAN TRADERS, CRAFTS, REFRESHMENTS, VISIT FATHER
CHRISTMAS, RAFFLE AND POCKET MONEY STALLS



SATURDAY 9TH DECEMBER

11.30AM - 1.30 PM

ST PETER'S SCHOOL HALL
NORFOLK RD, LYTHAM



LOOK OUT FOR
YOUR UNIQUE ORDER CODE
FROM *Xmas4schools*TM
VIA TEXT OR EMAIL
LOG ON TO PLACE YOUR ORDER & PAY

orders.xmas4schools.co.uk

SPREAD THE WORD

£1 FROM EVERY ITEM IS DONATED BACK TO THE SCHOOL...

THE MORE YOU BUY, THE MORE WE RAISE!



12x A6 CHRISTMAS CARDS

12x A6 BLANK CARDS

A3 POSTER CALENDARS

12x GIFT LABELS

MUGS

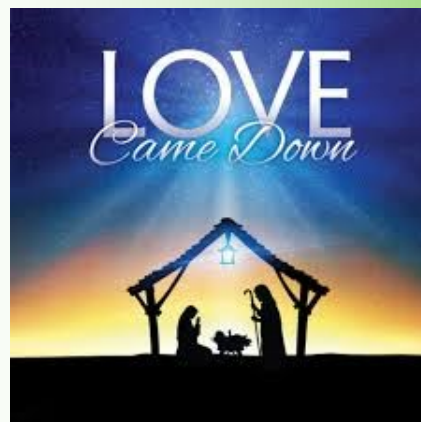
TEA TOWELS

*Xmas4schools*TM

POWERED BY Print | Junction

www.xmas4schools.co.uk

The Xmas4schools orders have arrived and your child will bring them home this week. For those that have missed the orders, you can contact Xmas4schools and ask for a digital copy of your child's artwork to order through another provider e.g. Moonpig



Christmas Nativities

Reception—Tues 12th Dec 9am & 6pm

Year 1/2—Thurs 14th Dec 9am & 6pm

Booking form will be sent out next week

Primary School applications 2024-25 are now open, please follow the link

below for further information.

Primary deadline

15.01.24

<https://www.lancashire.gov.uk/children-education-families/schools/apply-for-a-school-place/>

Supplementary forms available from the school office or by the following link

<https://www.st-peters-pri.lancs.sch.uk/admissions>



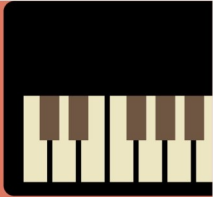
If your child celebrates their birthday this month (DECEMBER), we would like to invite them to join the special '**Birthday Table**' on the last Fri of the month. This includes

a cupcake with candle and a specially decorated table, the cost is 50p (please pay via Scopay under trips/events)

The 'Birthday Table' for December will take place on **Fri 22nd December**

LANCASHIRE MUSIC SERVICE

EARLY YEARS/ KS1 CHOIR



Tuesday Evenings
4.00 - 4.30pm

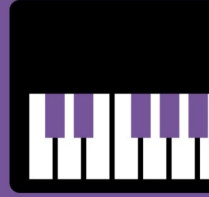


JOIN US FOR MUSIC, GAMES, WEEKLY
ACTIVITIES AND MORE!

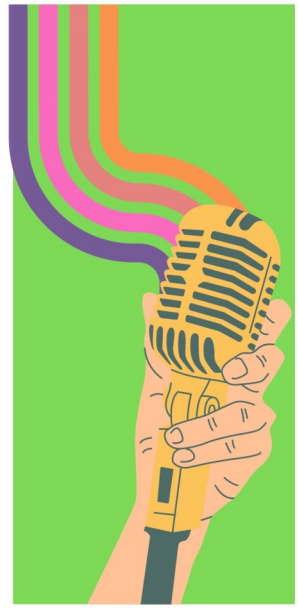
Fylde Music Centre, St Bede's Catholic High School
www.lancashiremusichub.co.uk

LANCASHIRE MUSIC SERVICE

KS2 CHOIR



Tuesday Evenings
5.15 - 5.45pm



JOIN US FOR MUSIC, GAMES, WEEKLY
ACTIVITIES AND MORE!

Fylde Music Centre, St Bede's Catholic High School
www.lancashiremusichub.co.uk

**LANCASHIRE
MUSIC SERVICE**

TUESDAYS
AFTER SCHOOL IN TERM TIME

FYLDE MUSIC CENTRE

CONTACT:
AMY CAMPBELL
MOB: 07887 830990
MAIL: AMY.CAMPBELL@LANCASHIRE.GOV.UK

FIND OUT MORE!
WWW.LANCASHIREMUSICHUB.CO.UK

BANDS ENSEMBLES
AND INDIVIDUAL
LESSONS AVAILABLE

UKULELE GROUP, BEGINNER
VIOLINS, ROCK BANDS
AND MORE!

WWW.LANCASHIREMUSICHUB.CO.UK
/FYLDEMUSICCENTRE

lancashire.gov.uk >>>>

Lancashire
County
Council 