



LEARNING  
& GROWING  
TOGETHER

# STRIKE LANE NEWS

## 14<sup>th</sup> November 2025

Tel: 01772632724

Email: [bursar@strikelane.lancs.sch.uk](mailto:bursar@strikelane.lancs.sch.uk)

Web: [www.strikelaneprimary.co.uk](http://www.strikelaneprimary.co.uk)

Facebook: <https://www.facebook.com/strikelaneprimary/>

Twitter: @StrikeLane

Dear Parents & Carers,

What a lovely week it's been at Strike Lane!

Today, we've been proudly supporting **Children in Need**, and it's been wonderful to see the enthusiasm across school. Thank you so much to everyone who has already donated through our JustGiving page <https://www.justgiving.com/page/strikelaneprimaryschool2025> or joined in with fundraising — your kindness really does make a difference. I know I'm not alone in feeling inspired by the stories shared on BBC The One Show and DJ Sara Cox's incredible challenge!

We know this time of year can be especially busy (and expensive!), so we really do appreciate your continued support. To get ready for our Daily Christmas Raffles, which begin on **1st December**, we'll be holding a **Non-Uniform Day next Friday**. Instead of money, we're asking for donations that can be made into Christmas hampers — things like candles, pamper items, festive treats or sweets. If you have any unused gifts tucked away in drawers, this is the perfect time to re-gift them! Tickets for the raffle will be available soon through the Arbor shop.

Our **Parent & Teacher Meeting** booking system is now live, so don't forget to check your device is set to UK time to avoid any hiccups. It would be fantastic if you could pop in for the Book Look before your meeting, so your child can proudly share their work with you. If that's tricky, just speak to your class teacher — we'll find another time that works.

Looking ahead, we're all getting excited for our whole-school trip to the **Peter Pan Pantomime at the Lowther Pavilion on Tuesday 9th December**. Huge thanks to the Friends of Strike Lane for covering the transport costs — parents only need to pay for the ticket. Because we're attending the afternoon performance, we'll be back at school a little later than usual, with collection between **4:30 and 5:00pm**. Children who usually attend Care Club can still do so as normal. We'll send reminders nearer the time, but we wanted to give you plenty of notice.

As we head into mid-November, it's starting to feel a little more festive around school — and we can't wait to share all the Christmas fun coming up! Thank you again for your continued support and positivity.

Enjoy a restful weekend with your families  
Katherine Shuttleworth

### Dates for your diary (new dates in red)

**Thursday 20<sup>th</sup> November** – Y6 Library Visit

**Friday 21<sup>st</sup> November** – Non-uniform Day – Xmas Hamper Donations

**Tuesday 25<sup>th</sup> November** – KS2 Dodgeball Competition at Carr Hill (*invitation only*)

**Tuesday 25<sup>th</sup> November – 3:30pm-4:30pm** – Parent Book Look

**Wednesday 26<sup>th</sup> November – 1:00pm-6:30pm** – Parent/Teacher Meetings

**Friday 28<sup>th</sup> November – 6:00pm-7:00pm** – Christingle Service

**Tuesday 2<sup>nd</sup> December – 7:00pm** – Christmas Tree Lighting Ceremony at Freckleton Cenotaph

**Tuesday 9<sup>th</sup> December - 12:00pm- 4:30pm** – Whole School Christmas Pantomime at Lowther Pavilion

**Wednesday 10<sup>th</sup> December – 2:15pm-3:15pm** – Christmas Performance for Y1 Parents/Carers

**Thursday 11<sup>th</sup> December – 2:15pm-3:15pm** – Christmas Performance for Rec & Y2 Parents/Carers

**Friday 12<sup>th</sup> December** – Xmas Jumper Day - Wrapped Gift Donations

**Monday 15<sup>th</sup> December** – Y6 Freckleton Lodge Visit

**Wednesday 17<sup>th</sup> December - 3:30pm-4:30pm** – Christmas Fair

**Thursday 18<sup>th</sup> December** – Christmas Party Day

**Friday 19<sup>th</sup> December** – Progress & Kindness Cup Assembly

**Friday 19<sup>th</sup> December** – School Closes For Christmas (usual finishing times apply)

**Monday 5<sup>th</sup> January** – School Re-Opens

### Free School Meals/Pupil Premium

If your financial circumstances have changed your child may be entitled to free school meals/pupil premium. You can quickly check your eligibility by visiting the following website,

<https://www.lancashire.gov.uk/children-education-families/schools/free-school-meals/>

Please be aware school receives additional funding for any pupil premium children we have on roll so it would be appreciated if you check your eligibility and apply if entitled.

Class Attendance (week ending 14/11/25)	Weekly
Oak	94.4%
Beech	94.8%
Rowan	95.4%
Maple	97.5%
Willow	97.5%
Sycamore	96.9%
Hornbeam	96.1%

### Stars Of The Week

Well done to all our Winners  
You should be very proud of your achievements

Year Group	Stars Of The Week
<b>Oak</b>	Kiana & Eliza
<b>Beech</b>	Archie & Thomas
<b>Rowan</b>	Casper & Edward
<b>Maple</b>	Luna & Daisy
<b>Willow</b>	Harriet & Denas
<b>Sycamore</b>	Fred & Isaac D
<b>Hornbeam</b>	Hope & Leonardo

### Attendance

Well done to Maple, Willow, Sycamore & Hornbeam Classes for achieving over 96% attendance this week.

### Christmas Pantomime

The payment item for the Christmas Pantomime is still open in Arbor. The pantomime is always a great whole school experience and one we all look forward to. The Friends of Strike Lane have kindly agreed to pay the travel expenses again this year so we will be going to watch Peter Pan at Lowther Pavilion on the afternoon of Tuesday 9<sup>th</sup> December. The cost to parents/carers is £10 per child for admission and can be paid via your Arbor app. To confirm your child's place please login to your Arbor app, scroll down to the "**Activities**" section and select "**Trips**". From there you should see the registration/payment item for the Christmas pantomime. Parents/Carers will have until 9pm on Friday 5<sup>th</sup> December to confirm their child's place on the trip.

### Christmas Jumper Swap

We are holding a Christmas Jumper Swap Shop throughout November where parents/carers are encouraged to bring in any Christmas jumpers/clothing items that no longer fit and are welcomed to come and exchange them for items on the rail outside the school office. It would be great if families could take some time to root out any Christmas jumpers/clothing to donate so that we can gather some stock that we can recycle to families.

### Christmas Hamper Raffles

Next week we will be sending home raffle tickets for our Daily Christmas Raffles that will take place each school day throughout December. Tickets will cost £2.00 each and can be paid for in your Arbor App. As this is a Friends fundraiser, we are also able to accept cash. We will send paper tickets home as we know family members who can't access Arbor often like to join in. Please send the purchased tickets back to class in a sealed envelope with the buyer's name, child's name and class along with the money (unless paying via Arbor). Additional ticket books can be requested from the school office.

# After school games at Freckleton Library

Every Tuesday 3:30pm – 5pm  
(term time only)



Free – no booking required  
for ages 5 and over

(under 8's must be accompanied by an adult)



# CHRISTMAS PRESENT APPEAL



ABOVE ORGANISATIONS AND COMPANIES ARE DROP OFF POINTS  
ACROSS THE FYLDE BOROUGH

The Fylde community in partnership with local schools, businesses and organisations are appealing for donations of new, unwrapped gifts to ensure no child is left without a gift this Christmas.

**We require gifts for children aged 4-16 Years Old**  
For any enquiries contact [presentappeal@afcfylde.co.uk](mailto:presentappeal@afcfylde.co.uk)





Lancashire &  
South Cumbria  
NHS Foundation Trust

# DROP IN SESSIONS

With our our Primary Mental Health Worker Team

Where?

**Lytham Library**

**FY8 5JY**



- Aimed at Parents, Children and Young people and professionals seeking advice around Mental Health

- Including information around signposting and best services that meet your Mental Health needs

**2<sup>nd</sup> Thursday of every month**

**2:00PM-4:30PM**

9<sup>th</sup> October 2025

13<sup>th</sup> November 2025

11<sup>th</sup> December 2025

11<sup>th</sup> January 2026

12<sup>th</sup> February 2026

12<sup>th</sup> March 2026

9<sup>th</sup> April 2026

14<sup>th</sup> May 2026

11<sup>th</sup> June 2026

9<sup>th</sup> July 2026

13<sup>th</sup> August 2026



**Fylde**

**Volunteer**

**Fair**

Want to make a difference in your local community?  
Come and meet local charities and organisations for free  
advice, information and opportunities to volunteer!

**FREE ENTRY**

**Thursday 20 November 2025, 1-4pm  
Well Community Centre, St Annes,  
St Albans Road, FY8 1UZ**

Want to host a stall and showcase your organisation?  
Email [victoria.clegg@fylde.gov.uk](mailto:victoria.clegg@fylde.gov.uk)

# Santa's Sleigh 2025

Organised by



## Santa will be visiting...

- 29 Nov (Sat) 09:30-16:00 Aldi, Mill Farm, Wesham
- 30 Nov (Sun) 10:00-16:00 Aldi, Lytham
- 5 Dec (Fri) 15:00-18:00 Townsends, Warton
- 6 Dec (Sat) 09:30-16:00 Booths, Lytham
- 7 Dec (Sun) 10:00-16:00 Morrisons, Kirkham
- 10 Dec (Wed) 15:00-17:00 Post Office, Newton
- 12 Dec (Fri) 14:30-16:45 Tesco Express, Warton
- 13 Dec (Sat) 09:30-16:00 Morrisons, Kirkham
- 14 Dec (Sun) 10:00-16:00 Booths, St Annes
- 17 Dec (Wed) 14:30-16:30 The Plough, Freckleton
- 19 Dec (Fri) 13:30-15:30 The Grapes, Wrea Green
- 20 Dec (Sat) 09:30-16:00 Aldi, Mill Farm, Wesham
- 21 Dec (Sun) 10:00-16:00 Morrisons, Kirkham
- 22 Dec (Mon) 09:30-16:00 Booths, Lytham

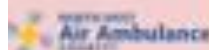
ALL PROCEEDS GO TO LOCAL  
GOOD CAUSES



Follow on Facebook



Donate by Card



**SUPPORT  
A GREAT  
CLAUS** at

# Santa Dash

**Walk, jog or run**  
on Blackpool Promenade

**Free Santa suits and  
medals for participants**

Join us...

**SUNDAY 7<sup>TH</sup>  
DECEMBER  
2025**



  
**Brian House**  
Children's Hospice

Sponsored by



REG CHARITY NO. 111098

REGISTER ONLINE AT

[www.blackpoolsantadash.co.uk](http://www.blackpoolsantadash.co.uk)

# PRESTON

## FREE TRIAL FOR AGES 3+

### TUESDAY

Ninjas Ages 3-6 | 4:00pm & 4:30pm  
Taekwondo Ages 7+ All Grades | 5:00pm

### Wednesday

Ninjas Ages 3-6 | 6:00pm  
Taekwondo Ages 7-11 All Grades | 6:30pm  
Taekwondo Ages 12+ All Grades | 7:35pm

### Thursday

Taekwondo Ages 7+ All Grades | 7:35pm

### Friday

Ninjas Ages 3-6 | 4:00pm & 4:30pm  
Taekwondo Ages 7-11 All Grades | 5:00pm  
Taekwondo Ages 12+ All Grades | 6:05pm

### Sunday

Ninjas Ages 3-6 | 4:00pm & 4:30pm  
Taekwondo Ages 7-11 All Grades | 5:00pm  
Taekwondo Ages 12+ All Grades | 6:05pm

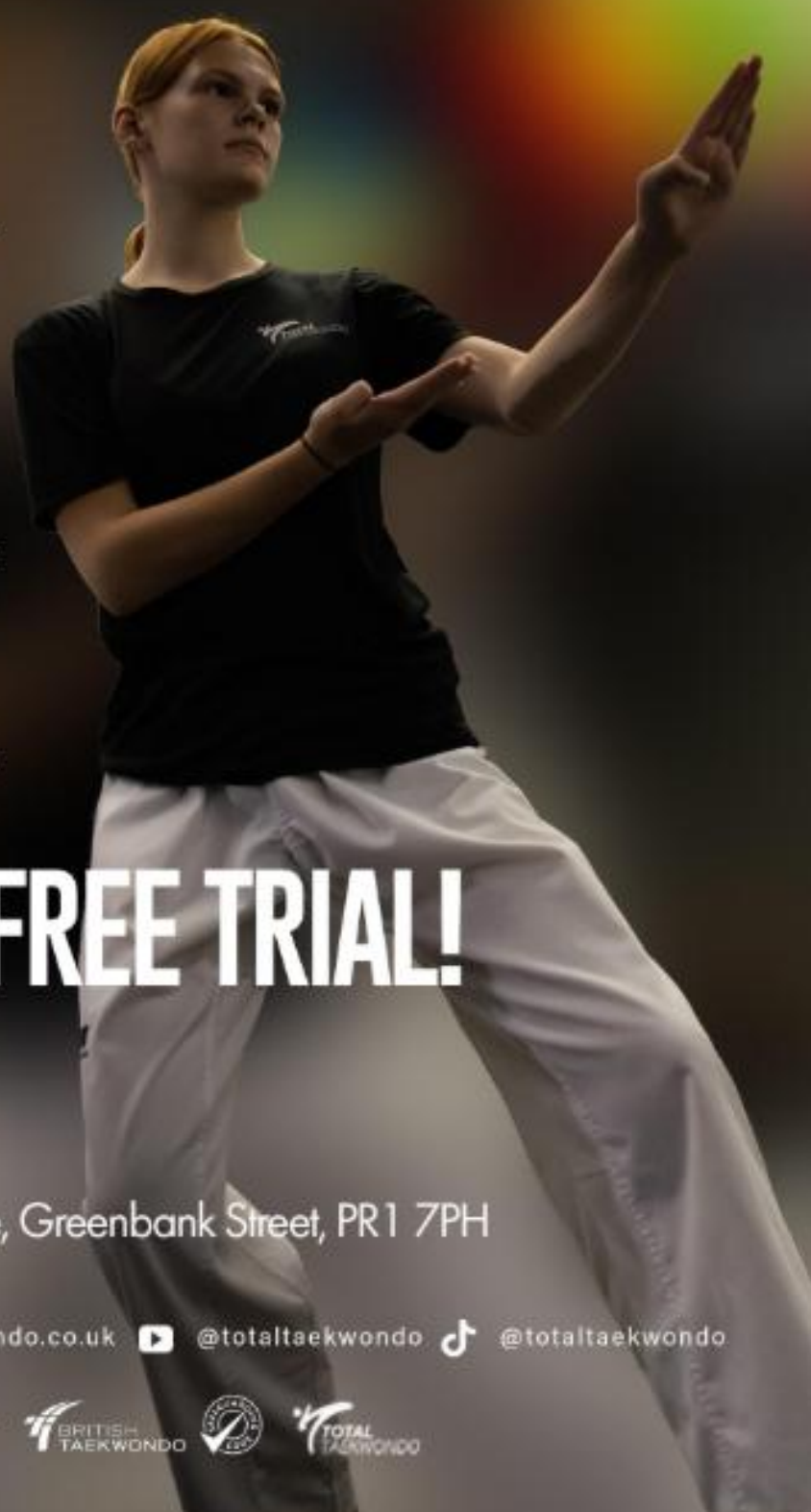
# BOOK YOUR FREE TRIAL!

[www.totaltaekwondo.co.uk](http://www.totaltaekwondo.co.uk)

Total Taekwondo Preston

Unit 4, Oxheys Industrial estate, Greenbank Street, PR1 7PH

 @totalpreston  @totaltaekwondo.co.uk  @totaltaekwondo  @totaltaekwondo



freckleton  
methodist church



**COMMUNITY  
CHRISTMAS EVENT**



**THURS 27<sup>th</sup> - FRI 28<sup>th</sup> NOVEMBER**

**10AM to 1PM**

Doors open on Thursday, Friday and Saturday to view the Christmas displays provided by groups within the community



**CHRISTINGLE  
CANDLELIGHT SERVICE**



**FRI 28<sup>th</sup> NOVEMBER 2025**

**6.00PM**

Coffee and Mince Pies will be served after the service

**CHRISTMAS FAIR  
SAT 29<sup>TH</sup> NOVEMBER 2025  
10AM TO 2PM**

Stalls Include; Cakes, Jams & Preserves, Tombola, Young Church Book Stall, Raffle.  
Hot & Cold Food and Drinks



**ALL ARE WELCOME**





Holy Trinity Church  
Lytham Road  
Freckleton  
Preston  
PR4 1AA



# Advent and Christmas 2025 with Holy Trinity

Tue. 02 Dec.	19:00	<b>Village Christmas tree lighting</b>
Sun. 07 Dec.	16:00	<b>Christingle at Holy Trinity</b> (also at St Paul's at 18:15)
Fri. 12 Dec.	19:00	<b>Carols in the inn</b> at the Coach & Horses
Sat. 13 Dec.	19:30	<b>Warton Singers concert</b> at St Paul's, Warton
Sun. 14 Dec.	17:00	<b>Lessons and carols at HT</b> (also at St Paul's at 18:30)
Wed. 24 Dec.	16:00	<b>Crib service at Holy Trinity</b> (also at St Paul's at 17:30)
	22:00	<b>Bethlehem Midnight Mass at HT</b> (also Midnight Mass at St Paul's, 23:30)
Wed. 25 Dec.	10:00	<b>Christmas Communion</b> at <u>HT</u> (no service at St Paul's)

*Evening Prayer Mondays at 16:00*



[www.freckletonparishchurch.org.uk](http://www.freckletonparishchurch.org.uk)

[holytrinitychurchfreckleton](https://www.instagram.com/holytrinitychurchfreckleton)



[holytrinitychurchfreckleton](https://www.facebook.com/holytrinitychurchfreckleton)

[@holytrinityfrec](https://www.x.com/holytrinityfrec)

Issue 2

