



Knowledge Organiser: In the Garden



Topic Background

Plants give us:

- oxygen to breathe
- food to eat
- medicines
- help to filter water keeping our seas clean
- bring us happiness, whether we are outside enjoying the green of the garden or inside with a house plant

Many composers have taken inspiration from their experiences in nature. The bloom of a flower, the thread of a climbing vine and the frantic flight of a bumblebee, have all been translated with scores and sounds.

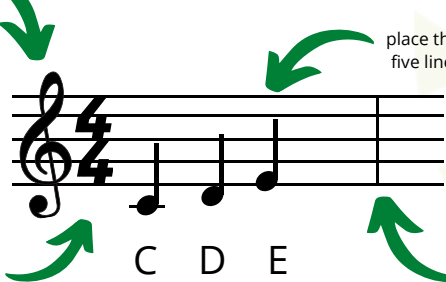
treble clef

shows us writing music that the notes on the staff are above middle C

time signature

tells us how many beats are in the bar and the value of one beat

Musical Knowledge



stave

place the notes on the five lines to show the pitch

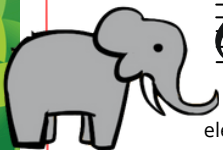
bar line

shows how music is divided into bars



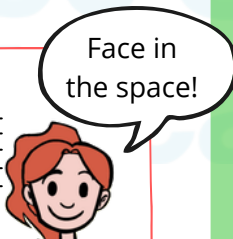
note values

crotchet:	paired quavers:	minim:	semibreve:	crotchet rest:
1 beat	1 beat	2 beats	4 beats	1 beat



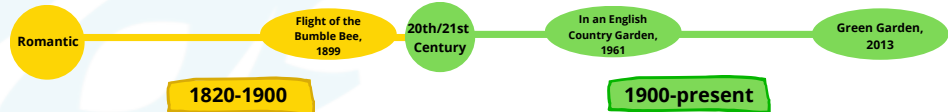
E G B D F
elephants get big dirty feet

F A C E



Listening Pieces

- Green Garden, Laura Mvula, 2013
- Flight of the Bumblebee, Nikolai Rimsky-Korsakov, 1899
- In an English Country Garden, Jimmie Rodgers, 1961



Key Vocabulary

- bar:** segment of time corresponding to a specific number of beats
- bar line:** separates the bars
- crotchet:** a note worth one beat, represented by a stem with a solid dot
- crotchet rest:** a silent note worth one beat
- duration:** how long or short a note is
- melody:** the tune of the music made up of high and low pitches
- minim:** a 2 beat note
- notation:** symbols used to write down a musical sound
- paired quavers:** two 1/2 beat notes
- performance:** an act of performing a song or piece of music
- pitch:** how high or low a sound is
- pulse:** the heartbeat of the music
- rhythm:** patterns of sound consisting of shorter and longer notes
- solo:** a section of music played or sung alone by one performer
- stave:** the five lines that notes are placed on to indicate pitch
- time signature:** tells us how many beats are in each bar and which note value is to be given one beat
- treble clef:** a symbol located at the beginning of a staff line used to indicate which pitch should be played. Instruments that use the treble clef include flute, clarinet, trumpet, recorder, violin