

## MEET THE EXPERT

The London West Alliance is pleased to invite you to an afternoon CPD facilitated by  
**Julia Diamond-Conway**

# CREATIVE LESSON IDEAS FOR RE IN PRIMARY SCHOOLS

Come and find out about a range of activities to enliven RE lessons and engage pupils. You will receive a series of strategies that can both be adapted or adopted for use in your classroom and shared with other members of staff to bring dynamic, confident RE teaching into your school. Classroom ideas will be varied and will focus on a range of different worldviews (religious and non-religious), so there should be something for everyone in this session.

The aim is for attendees to leave feeling refreshed and motivated to bring creative, thoughtful and rigorous RE to their classrooms and schools.

This session will take place on  
**Thursday 20th January 2022**  
From 4.00 - 6.00pm

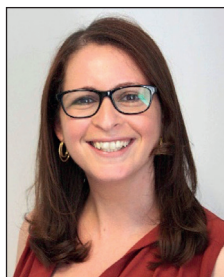
**WEBINAR**



## MEET THE EXPERT

The London West Alliance is pleased to invite you to an afternoon CPD facilitated by

### Julia Diamond-Conway



Julia is a National RE Adviser who works at RE Today Services. She specialises in primary RE and taught in London primary schools for 14 years before joining the RE Today team in 2014.

Julia has written for many RE Today publications and trains teachers around the country. Her passion is promoting excellent RE for all. Julia advises a number of SACREs and works to support RE in several London boroughs. She is always delighted to be involved in setting up Ambassadors of Faith and Belief schemes (AFaBs).

Currently, Julia is Co-Chair of AREIAC (Association of RE Inspectors, Advisers and Consultants). She has also been a member of the Executive Committee for NATRE (National Association of Teachers of RE) and has been involved in the development of NATRE's journal 'Professional Reflection'.

- Cost:** ▶ £40 for LWA members and membership schools and £45 for other schools
- ▶ **SEND TWO DELEGATES** FOR £75 for LWA members and £80 for other schools

To make enquiries, find out more, and book places please contact:  
[LWA@lampton.org.uk](mailto:LWA@lampton.org.uk) *Tickets are transferable but non-refundable.*