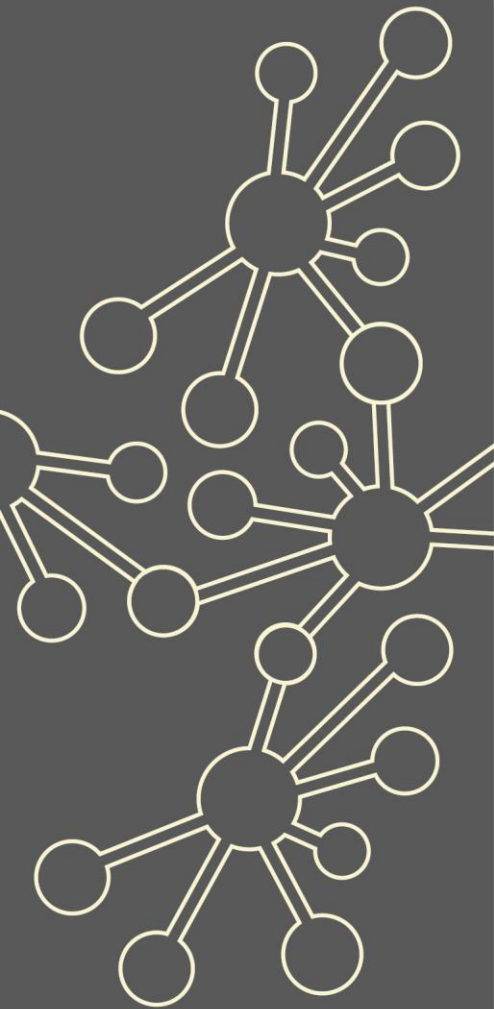


Years 5-8 Continuity

Maths Hubs Network
Collaborative Projects
2021/22

NCP21-19



Outline

Work Groups in this project aim to strengthen the transition from primary to secondary school by focusing on curriculum and pedagogical continuity over Years 5 to 8.

Central to the Work Group is the promotion of cross phase communication between teachers to address issues of maths knowledge and learning transition as distinct from pastoral considerations. Whilst many Work Groups will focus on using multiplicative reasoning resources, Work Groups can explore any aspect of the KS2/3 curriculum.

Details

What is involved?

Local Work Group design will follow a workshop – school-based work cycle, consisting of several workshops followed in each case by specific school-based work.

A lesson study approach is encouraged where all participants focus on a particular aspect of the maths curriculum and work collaboratively to develop this in their schools. Cross-phase classroom observation and discussion of practice is encouraged wherever possible. Consideration of the primary maths Ready-to-Progress criteria and the NCETM Checkpoints activities will be a common feature of all Work Groups.

Who can take part?

Participants should be teachers of Years 5-8 in primary, secondary, middle school and all-through schools who have some responsibility for curriculum development, e.g. primary school maths leads/secondary heads of department.

Linked 'families' of schools are encouraged to take part: ideally teachers from secondary schools and some of their associated primary schools will work together.

"The Y5-Y8 Continuity Workgroup gave us the spark needed to start relationships with specific departments in the high schools that we feed into. We contacted our main high schools directly and now have established relationships with the maths team in each of them so that we understand how each other work... contributing towards their overall transition. Following the success of this, we have also branched out to doing the same in English - showing that the impact of our work groups reaches further than just maths" - Richard Downs, West Acton Primary School.

[Further Information](#)

What are the benefits?

- Participants and their schools will:
- ✓ deepen knowledge and understanding of the curriculum across KS2 and KS3 and the expectations of pupils at the end of each key stage
 - ✓ understand the approaches which will support pupils as they move from KS2 to KS3, including the importance of consistency of language and representations
 - ✓ make use of common approaches, representations and language across phases
 - ✓ develop collaboration between primary and secondary colleagues on issues of curriculum and pedagogy, making them part of the school's transition practice (and policy)

What is the cost?

The Years 5-8 Continuity project is fully funded by the Maths Hubs Programme so is free to participating schools.

**The London Central and West Maths Hub reserves the right to charge a £75 fee for non-attendance to the sessions or for cancellations to any of the sessions with less than 1 weeks' notice. **

Dates:

19th Nov 21 (9:30-15:30) – Venue TBC
10th Dec 21 (13:00-15:30) – Online
18th Feb 22 (13:00-15:30) – Online
29th Apr 22 9:30-15:30) – Venue TBC

Further details:

This project will be a mixture of online and face-to-face sessions hosted a venue yet to be confirmed.

Lunch will not be provided.

The wider context

The Work Groups promote teaching for mastery approaches across the KS2-3 boundary to ensure consistency in the pupil experience, thereby meeting the primary and secondary strategic goals of establishing teaching for mastery approaches and encouraging schools in engaging with teaching for mastery support. The Work Groups also meet the Primary goal of ensuring that pupils 'are well prepared for the secondary maths curriculum'.

In particular in 2021/22, teachers will be working without the usual SATs data to support transition, so the Work Group's aim of developing collaboration to secure successful transition for pupils has an added significance. As the situation returns to normal, this enhanced communication and collaboration will ensure that, when data is available, it is used in a more informed way.

Expectations of participants and their schools

Schools must be able to commit to the full academic year's programme. This involves the equivalent of three days of face-to-face (or online) support across the academic year, as well as classroom and school-based activity. Participants must also be supported by their school leadership to explore outcomes from the project with other colleagues in their school.

About the Hub

London Central and West works across 7 boroughs of London (Brent, Ealing, Harrow, Hammersmith and Fulham, Hounslow, Hillingdon and Kensington and Chelsea). It is one of 40 Maths Hubs in England, working together within the Maths Hub Programme, which began in 2014. To read more about the Maths Hub, please see [here](#).

A Work Group brings senior leaders and maths teachers together multiple times during the school year, rather than just being a one-off course. There is a common aim which is to research, develop, practise and recognise best practice. The emphasis is on collaborative, exploratory, evidence-based professional development.

If you are interested in this Work Group, please complete the [expression of interest form](#) and email it to admin@lcwmathshub.co.uk. We will then be able to send you the relevant dates and details of this Work Group for 2021-22.

