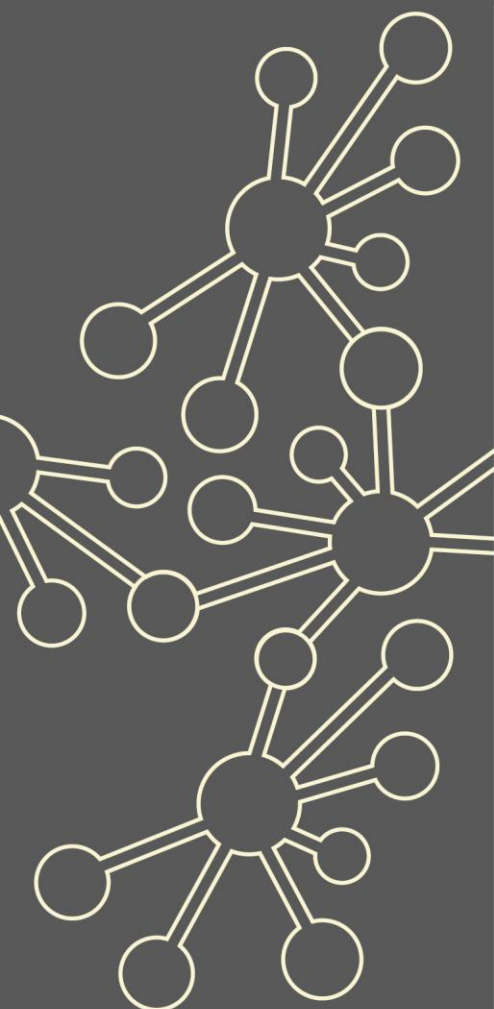


# Years 7-11 Coherence

Maths Hubs Network  
Collaborative Projects  
2021/22

**NCP21-18**



## Outline

A deep dive through the curriculum, this project focuses on participant teachers working together to analyse, deconstruct and trace through the curriculum a selected key topic area, developing insight into effective teaching approaches, and considering the implications for longer term curriculum design.

The project was previously known as Challenging Topics at GCSE, but its name has been amended to more accurately reflect the work undertaken as well as to convey the importance of curriculum coherence.

## Details

### What is involved?

Local Work Group design will follow a workshop – school-based work cycle, consisting of several workshops followed in each case by specific school-based work. Workshops will provide opportunities for teachers to identify and analyse a key topic area, to work collaboratively to develop pedagogical approaches to it, and to evaluate and discuss after teaching.

There will be three days (or the equivalent) of Work Group meetings across the academic year.

### Who can take part?

Participants should be secondary school teachers of GCSE Maths. Individuals or ideally pairs of teachers from a department participate, with an expectation that they will work with other members of their department at appropriate points.

Schools that have participated in previous years may do so again, as developments often take place over time.

### Dates:

15th Dec. 2021 (9:00am-3:30pm)  
9th Feb, 2022 (9:00am-3:30pm)  
6th Apr. 2022 (9:00am-3:30pm)

### Further details:

This project may be a blended approach (mixture of online and face-to-face) but venue will be:

Springwest Academy, Browells Ln,  
Feltham TW13 7EF

Lunch will not be provided but you will have time to go to the local shops or bring your own.

### What are the benefits?

Participants and their departments will:

- ✓ develop a deeper insight into the maths that underpins learning in a challenging topic, through unpicking and analysing the topic
- ✓ develop a deeper insight into the key issues and misconceptions behind the topic
- ✓ identify misconceptions and plan a series of lessons to support students in the topic area
- ✓ use and evaluate appropriate pedagogies to teach the topic area
- ✓ work with their departments to unpick and analyse topics to inform collaborative planning and development of schemes of work.

### What is the cost?

The Years 7-11 Coherence project is fully funded by the Maths Hubs Programme so is free to participating schools.

\*\*The London Central and West Maths Hub reserves the right to charge a £75 fee for non-attendance to the sessions or for cancellations to any of the sessions with less than 1 weeks' notice.\*\*

## Covid-19 Recovery

**Many positive lessons were learnt from online collaboration during Maths Hubs activity in 2020/21. These will be built upon in 2021/22.**

As the impact of the pandemic hopefully recedes, the result for Maths Hubs work will be a blend of face-to-face activities and frequent online collaboration.



## The wider context

Feedback from teachers, along with GCSE exam analysis, indicates there are key areas of the curriculum that students find challenging. While teachers will need to address students' short term conceptual difficulties with regard to such topics, there is also the recognition that these issues are often rooted in earlier learning, and this forms a key focus for these Work Groups. These Work Groups address strategic goals relevant to secondary schools, specifically: supporting schools to address the challenges of teaching GCSE Mathematics so that all students develop deep knowledge, understanding and confidence, and are well prepared for progression to post-16 education. This project can offer an entry point into developing teaching for mastery approaches, or could support a particular focus for a department already involved in the teaching for mastery programme.

## Expectations of participants and their schools

Schools must be able to commit to the full academic year's programme. This involves three days of face-to-face support across the academic year, as well as classroom and school-based activity.

## About the Hub

London Central and West works across 7 boroughs of London (Brent, Ealing, Harrow, Hammersmith and Fulham, Hounslow, Hillingdon and Kensington and Chelsea). It is one of 40 Maths Hubs in England, working together within the Maths Hub Programme, which began in 2014. To read more about the Maths Hub, please see [here](#).

A Work Group brings senior leaders and maths teachers together multiple times during the school year, rather than just being a one-off course. There is a common aim which is to research, develop, practise and recognise best practice. The emphasis is on collaborative, exploratory, evidence-based professional development.

If you are interested in this Work Group, please [register here](#). We will then be able to send you the relevant dates and details of this Work Group for 2021-22.

