

Vocabulary

Classification: Putting living things into groups. **Classification Keys:** A set of questions that help to group living things. **Environment:** The surroundings where a living thing exists. **Vertebrates:** Animals with a backbone. **Invertebrates:** Animals without a backbone. **Extinct:** A species that has no living members. **Endangered:** At serious risk of becoming extinct.

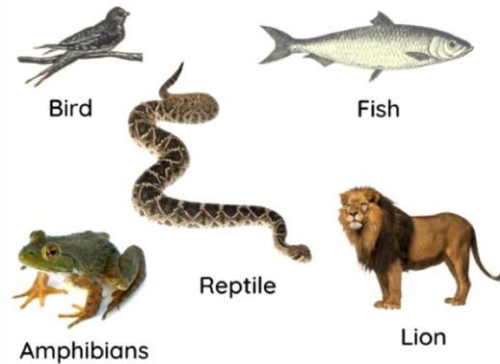
Vertebrates and Invertebrates

Animals are grouped into invertebrates and vertebrates.

More than 90% of animals in the world are invertebrates.

Vertebrates can be grouped or classified in five ways: Fish, Amphibians, Reptiles, Mammals and Birds.

Vertebrates



Plants

Plants can be grouped into two main groups: Plants with seeds and plants without seeds.

Plants with seeds are usually flowering plants and conifers.

Examples of plants without seeds are ferns and mosses.

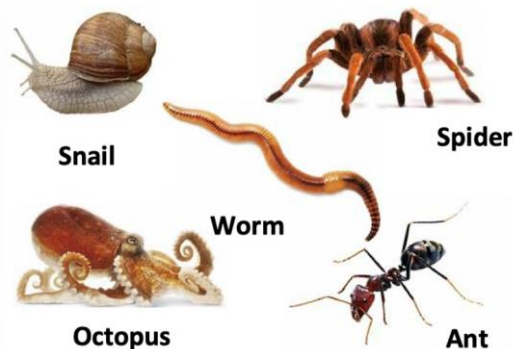
Classification Keys

Classification keys can be used to help us work out what an animal might be.

They use a series of questions with yes or no answers.

We look at the observable features of the living thing and its surroundings to help us answer the questions.

Invertebrates



Classification Key

